

LEXMARK™ W820
LEXMARK™ W820n
LEXMARK™ W820dn

Technology

- Laser

Resolution

- 1200 Image Quality
- 600 x 600 dpi
- 300 x 300 dpi

Speed

- 45 ppm @ 300 dpi, 600 dpi and 1200IQ
- First Copy Time = 4 sec

Processor

- PMC-Sierra RM5231A / 350 MHz

Memory Standard

- 32MB expandable to 384MB (Lexmark W820)
- 64MB expandable to 384MB (Lexmark W820n and W820dn)

Memory Optional

- SDRAM Options : 4, 8, 16, 32, 64, 128MB
- Optional Flash Memory : 2, 4, 8, 16MB

Connectivity Standard

- USB and IEEE 1284 Parallel (1284-B connector) on Lexmark W820
- USB and Integrated 10/100Base Tx Ethernet port on Lexmark W820n and W820dn

Optional Adapter

- Internal Network Connections :
 - MarkNet N2000t Token Ring
 - MarkNet N2001eEthernet 10/100Base Tx
 - MarkNet N2002e Ethernet 10BaseT/2
 for simultaneous support of over 30 network environments including Microsoft NT, Novell Netware (including full NDS support), IBM OS/2 Warp/LAN Server, UNIX, TCP/IP and Apple Talk

- Tri-Port adapter connection to Local Talk, serial RS-232C/RS-422 and infrared
- Coax/Twinax adapter for direct attachments to IBM mainframe and midrange environments (SCS and IPDS)
- USB/Parallel 1284-C Interface Card and 1284 C parallel cable
- External serial adapter and serial cable (50 ft.)

Network Management Software

- MarkVision Professional printing and network printer management software
- MarkTrack device management and accountability

Applications Solutions Options

- ImageQuick Card™
- Bar Code Card™
- Card for IPDS and SCS/TNe™

Electronic Forms Support

- Optra Forms 2,4, 8, 16 Flash DIMM
- Optra Forms Hard Disk

Multifunction Copy / Scan / Fax / Device

- Lexmark X6100 MFP option

Compatibility Standard

- PostScript 3 Emulation
- PCL 6 Emulation
- PPDS Migration Tool

Font Selection

- PCL6 : 84 scalable fonts, 2 bitmapped fonts, up to 83 symbol set
- PostScript 3 : 156 scalable fonts
- PPDS : 39 scalable fonts, 5 bitmapped fonts

Paper Handling

Standard Input

- 2 x 500 sh input Drawer
- Sizes : A3, A4, 11x17, Letter, Legal, Executive, Folio
- Weights : 60 to 163 g/m²
- 250-sheet Multi-Purpose Drawer
- Sizes : A3, A4, A5, JIS-B5, JIS-B4, 11x17, Letter, Legal, Executive, Folio
- Weights : 60 to 163 g/m²

Optional Input

- Envelope Feeder
- Sizes : 7³/₄, 10, DL, C5
- Weights : 75 to 90 g/m²
- High Capacity Feeder (2500 sh)
- Sizes : A4, Letter, A3 (tray 3 only)

Paper Capacity

Input std / max sheets:

- 1035 / 3535

Output std / max sheets:

- up to 500/3550

Optional

- 3250 sheets finisher: hole punching, stapling, offsetting

Other

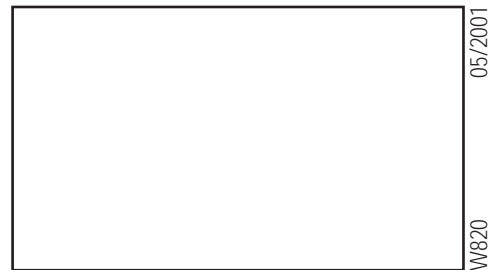
- Duplex (standard on the dn model)

Cost Saving and Environmental Features

- 30K High yield print cartridges
- Selectable Print Darkness levels
- Print and Hold (Verify Print)
- Multi-up printing
- Optional two-sided printing (standard on Lexmark W820dn)
- MarkVision Professional alert driven printer management
- Power Saver Mode
- High duty cycle

Size / Weight (H x W x D)

- 483 x 902 x 559 mm (HxWxD – W820/n Base (2x500, MPF inputs standard)
- Weight : 50.4 kg



www.lexmark.co.uk



Passion for printing ideas.™

LEXMARK™ W820



45 ppm



350MHz



A3/A4



Wide Range of finishing option



15 to 40+



On Site Service



A3 production-level printing: take the next step in productivity

* Yield Claim is based on approximately 5% coverage
 ** Available in August 2001

Optra, Optra Forms, OptraImage, MarkVision, MarkNet, ImageQuick, Lexmark, Lexmark with diamond design and Passion for printing ideas are trademarks of Lexmark International, Inc. registered in the United States and/or other countries. PCL is a registered trademark of Hewlett-Packard Company. PostScript is a trademark of Adobe Systems Incorporated registered in the States. All other trademarks are the properties of their respective owners.

They get up to A3 printing

They get 4 seconds time to first page

They get extensive finishing options

They get 45 ppm

They get a printer that grows with their business



“What's in it for my department?”

Increase your productivity, not your total cost of printing!

The W820 illustrates how Lexmark is driving down the total cost of printing while increasing printer performance.

- Easy to install high yield cartridges and other customer replaceable supply and maintenance items help you control costs.
- User selectable toner darkness settings and multi-up printing let you optimise output and economise on toner.
- Lexmark service and support ensures fast, reliable intervention.
- Finishing capabilities reduce the human intervention required for large print runs.

LEXMARK W820

at the heart of a better way of working.

The W820 is a powerful, high performance component in Lexmark's total approach to making output and document management easier and more efficient across your company. Discover how the W820 fits into your workflow.

- Standard **Print and Hold** features such as Confidential, Verify, Repeat and Reserve Print help network printer users work effectively in a shared printer environment while ensuring confidentiality as well as cost savings.
- Add **Lexmark's multifunction capability** and streamline business processes by consolidating electronic and hardcopy document management onto one compact device for print, copy, fax and scan functions.



The Lexmark W820 laser printer



Production level performance in our fastest A3 printer!

If you've already used a Lexmark departmental printer, you know how its speed can benefit your company. Now, with the W820, you can revolutionise the pace at which you work. 45 ppm, A3/A4 printing, advanced document finishing options and trailblazing multifunction capabilities: no wonder our top of the line printer is good for your bottom line!

- A3/A4 printing.
- 45 ppm print speed, 4 seconds time to first page and fast RIP technology for lightning fast job turnaround.
- 10/100 Base Tx Ethernet to keep your department on track. Standard on W820n and dn.
- Efficiency boosting high capacity standard and optional paper handling features*.
- Duplex and multi-up printing capability to reduce toner use and paper waste. Duplex standard on W820dn.

*up to 6 trays for a maximum of 3 535 sheets

Finishing options: the possibilities are endless!

The W820's advanced finishing options make professional document production simple and free your team for more important work.

- Multiple staple positions (up to 3 positions).
- Hole punching.
- Offset stacking.

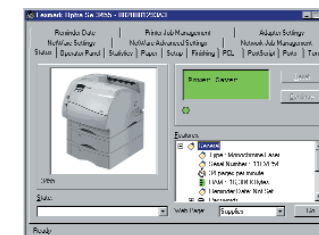


Integrating and managing printers shouldn't be complicated.

In every company, hardware and software environments are in constant evolution. Lexmark makes it easy to ensure that your printers are up and running whenever they're needed.

- Standard and optional connectivity solutions ensure high speed communications and broad compatibility. Ethernet standard on W820n and dn.
- Lexmark printers come with advanced software tools that automate and centralise the set up and updating of your networked printers.
- MarkVision™ Professional software lets you remotely configure, monitor and manage Lexmark printers and a wide-range of non-Lexmark machines.

Who's low on paper?
Which printers are overworked?



MarkVision knows!

- Migrate to e-forms at the rhythm that's right for you and do it without costly software changes or investments. **Optra Forms** eliminates the waste associated with pre-printed forms, helps you modify business processes faster, minimises network traffic and enhances your company image!
- The Lexmark **Optra BarCode** card converts alphanumeric data into bar codes directly at the printer, ensuring optimised bar code accuracy and seamless integration of bar codes into your system and business processes.
- The **ImageQuick** option ensures perfect printing of Web- and Intranet-based resources directly from your Lexmark printer. With a direct connection to the on-line resources you depend on, each Lexmark printer can become a printing kiosk for the printing of company forms, documents, sales information, databases, Web pages and more.
- Save time and money! The **Lexmark Document Distributor**, together with Lexmark multi-function printing capabilities, automates complex and repetitive document conversion and transmission tasks, leaving you and your team more time for mission-critical tasks.
- With **ImageQuick**, your printer can print a wide variety of standard formats including HTML, PDF, TIFF and more. This ensures easy integration into your document management system, enabling simpler printing processes.

Some of these options will not be available at announcement. For more details please contact Lexmark.

PC-less web printing

