

Lexmark Managed Print Services Monthly Report: Jan 2020
07X049 - P.S. 049 Willis Avenue, 383 E 139Th St, Bronx, NY 10454-2751

Please find enclosed a snap shot of your school's printer environment. The printer breakdown and data encompasses only the printers we can see on your network. You may have additional printers that are locally connected (e.g. USB attached), but those are not included in this breakdown.

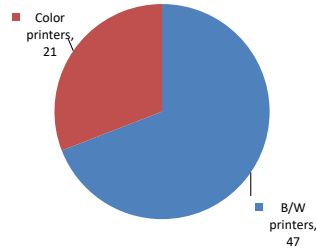
Chart 1 – School Printer Breakdown

This provides your school's enrollment, along with the number of printers, including the distribution between B/W and color printers.

P.S. 049 Willis Avenue

Enrollment	655
B/W printers	47
Color printers	21
Total printers	68

Color/Mono Device Breakdown



From the list provided on page 3 are all of your printers represented? If not, how many are missing Providing Lexmark the asset data that is missing will allow us to give you a more accurate picture of your printer environment.

Do you know how many printers you have in your main office, compared to the number of people who sit in the main office? Reducing the number of devices and using the most efficient models in the right locations can help your school save money.

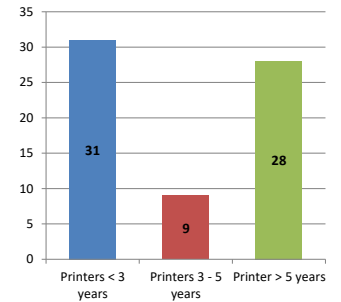
Chart 2 – Printer Age Statistics

Here we show the average age of your printers and show the distribution among 3 age categories; under 3 years old, 3-5 years old and over 5 years old.

Printer Age Statistics

Average Age (years)	5
Printers < 3 years	31
Printers 3 - 5 years	9
Printer > 5 years	28

Printer Age Statistics



The age of your printer fleet plays a large role in your annual printer maintenance and toner cost. The DOE only supports printers 6 years and younger.

Once the warranty expires and the age of your device exceeds 6 years, maintenance and repairs become very costly.

New printers have higher toner yields than older printers, resulting in lower cost per page which saves money.

Newer printers are Energy Star compliant and have advanced eco settings which help reduce energy usage and saves money.

Glossary

B/W - Black and White Printing Only

Color - Color or Black and White Printing

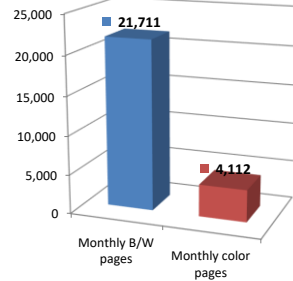
Duplex - Printing on both sides of the paper.

Simplex - Single Sided Printing

Chart 3 – Volume of Pages Printed

This provides your printed page volumes for the previous month for both B/W and color print jobs. In addition, a utilization percentage is calculated by comparing your print volume for each printer to the maximum monthly volume capacity for that printer model.

Color/Mono Pages Printed



Volume of pages printed

Monthly B/W pages	21,711
Monthly color pages	4,112
Total monthly pages	25,823
Color page %	16%
Utilization %	3%

[Do you know if all of your printers are being used and how much?](#)

Knowing where volumes are created helps identify areas for consolidation and helps you select the most efficient printers for replacement.

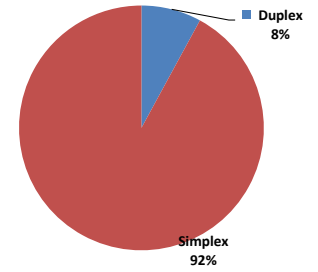
[Are you printing a large amount of color volume?](#)

Controlling color volume, which typically costs more than black and white, can help your school save money.

Chart 4 – Duplex Breakdown

This section shows the percentage of duplexed (double-sided) pages printed along with your duplex opportunity. Duplex opportunity is the total number of pages that could be printed duplex and does not include single page documents. Keep in mind, only the newer printers report duplex statistics. The duplex opportunity shows the prior month's print volume, from the printers with duplex statistics, that could have been duplexed.

Duplex Vs. Simplex



Duplex breakdown

Duplex opportunity	22,222
Duplex	8%

[Did you know that your printers are able to print on both back and front of the page?](#)

Increasing your school's use of double sided printing helps reduce your environmental impact and will help your school save money.

[The average duplex rate for the NYC DOE is 14%](#)

A modest improvement in duplex of 10% would reduce the carbon footprint by over 435,000 pounds of CO₂ per year, and save the DOE over \$78,000 in paper costs annually.

[Lexmark printers 6 years and younger all have duplex capability. The following duplex initiatives can reduce paper consumption and save money:](#)

Setting duplex as your default setting on your printer

Educating end users about the benefit of duplex printing.

[For more information on how the DOE is focused on Sustainability check:](#)

<http://schools.nyc.gov/community/facilities/sustainability/about/>

Actions you can take to Save your School Money

- Use highest yield toner whenever possible to lower the cost per page.
- Consider replacing printers over 6 years old to optimize eco-friendly printer environment.
- Duplex multiple page documents when possible to reduce paper usage.

Printer details

Model	Serial Number	Age in Years	Utilization	ATS Printer	Avg Mono Pages	Avg Color Pages	Avg Monthly Volume
C748de	5026029421878	6					

CS510DE	502735945PCDX	2	1%	25	65	90
CS510de	502728946BX99	4				
CS510de	5027089464XYH	6				
CS510DE	502743945GKX5	3				
CS622DE	5029829040G27	1				
CS622DE	5029829040G29	1				
CS622DE	50299010417XK	1				
CS622DE	50299010417TX	1	1%	23	118	141
CS622DE	50299010417V1	1				
CS622DE	5029903041BLZ	1				
CS622DE	5029903041BMZ	1				
CS622DE	5029903041BM3	1				
CX510de	7527499466WNV	5				
CX510de	75273894630GT	6	42%	279	2689	2968
CX622ADE	7529827140FOF	1				
CX622ADE	7529838140ZK5	1				
CX622ADE	7529838140ZHR	1				
CX622ADE	7529901141PD3	1				
CX622ADE	7529901141PF1	1	16%	326	1240	1566
CX622ADE	7529845141BB2	1				
E360dn	72M480R	10				
E460dn	72HH7GD	9	2%	152		152
E460dn	72HH7HK	9	8%	800		800
E460dn	72HH7GF	9				
E460dn	72HH7G6	9				
E460dn	72HH7HL	9				
E460dn	72HH7HR	8				
E460dn	72HH7FM	9				
E460dn	72HH7GK	9				
E460dn	72HH7G4	4	3%	306		306
E460dn	72HH7G2	9	9%	878		878
E460dn	72HH7GG	9	5%	524		524
E460dn	72HH7G5	9	3%	253		253
E460dn	72HH7FW	9				
E460dn	72HH7HH	4	20%	1958		1958
E460dn	72HH7G0	9				
E460dn	72HH7G3	9				
E460dn	72HH7FF	9				
E460dn	72HH7GX	9				
E460dn	72HH7GL	9				
E460dn	72HH7FN	9	3%	261		261
E460dn	72HH7HM	9				
E460dn	72HH7HN	9	6%	636		636
E460dn	72HKYWD	9				
MS510DN	45146PHH3DGY5	3				
MS510DN	45146PHH37T84	3				
MS510DN	45146PHH3K8Y0	3				
MS510DN	45147GHH42HZK	2	4%	620		620
MS510DN	45146PHH3DGYV	3				
MS621DN	460090200LVKP	1	4%	874		874
MS621DN	460090200LVLC	1	4%	755		755
MS621DN	460090200LVL1	1	4%	710		710
MS810	50275194688VB	5	0%	259		259
MS810de	406347990PB9X	5	10%	1939		1939
MX410DE	70157GLM1F101	2	8%	761		761
MX410DE	70157GLM1F108	2	11%	1099		1099
MX410DE	70157GLM1F0YC	2	5%	497		497
MX410DE	70157GLM1F0YL	2	13%	1330		1330
MX410DE	70157GLM1F0YB	2	9%	911		911
MX410DE	70157GLM1F100	2	5%	540		540
MX410DE	70157GLM1F0Y1	2				
MX410de	701533LM092PH	6				
MX410DE	70157GLM1F0ZD	2	8%	786		786
MX410DE	70157GLM1F0ZM	2	14%	1354		1354

<< More data continued on Next Page >>

07X049 - Jan 2020 - Page 3

Printer Details - Page 2

Model	Serial Number	Age in Years	Utilization	ATS Printer	Avg Mono Pages	Avg Color Pages	Avg Monthly Volume
MX421ADE	70178271032N3	1	4%		447		447
MX421ADE	70178271032N9	1	12%		1154		1154
MX421ADE	70178372057B0	1	13%		1254		1254
0	0	0					

