

Please find enclosed a snap shot of your school's printer environment. The printer breakdown and data encompasses only the printers we can see on your network. You may have additional printers that are locally connected (e.g. USB attached), but those are not included in this breakdown.

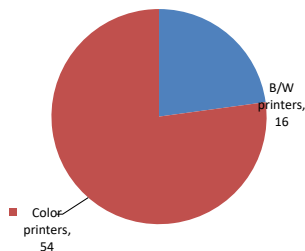
Chart 1 – School Printer Breakdown

This provides your school's enrollment, along with the number of printers, including the distribution between B/W and color printers.

P.S. 071 Rose E. Scala

Enrollment	1459
B/W printers	16
Color printers	54
Total printers	70

Color/Mono Device Breakdown



From the list provided on page 3 are all of your printers represented? If not, how many are missing Providing Lexmark the asset data that is missing will allow us to give you a more accurate picture of your printer environment.

Do you know how many printers you have in your main office, compared to the number of people who sit in the main office? Reducing the number of devices and using the most efficient models in the right locations can help your school save money.

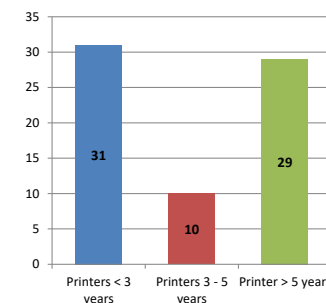
Chart 2 – Printer Age Statistics

Here we show the average age of your printers and show the distribution among 3 age categories; under 3 years old, 3-5 years old and over 5 years old.

Printer Age Statistics

Average Age (years)	4
Printers < 3 years	31
Printers 3 - 5 years	10
Printer > 5 years	29

Printer Age Statistics



The age of your printer fleet plays a large role in your annual printer maintenance and toner cost. The DOE only supports printers 6 years and younger.

Once the warranty expires and the age of your device exceeds 6 years, maintenance and repairs become very costly.

New printers have higher toner yields than older printers, resulting in lower cost per page which saves money.

Newer printers are Energy Star compliant and have advanced eco settings which help reduce energy usage and saves money.

Glossary

B/W - Black and White Printing Only

Color - Color or Black and White Printing

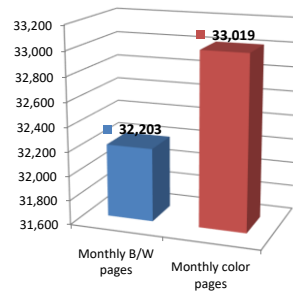
Duplex - Printing on both sides of the paper.

Simplex - Single Sided Printing

Chart 3 – Volume of Pages Printed

This provides your printed page volumes for the previous month for both B/W and color print jobs. In addition, a utilization percentage is calculated by comparing your print volume for each printer to the maximum monthly volume capacity for that printer model.

Color/Mono Pages Printed



Volume of pages printed

Monthly B/W pages	32,203
Monthly color pages	33,019
Total monthly pages	65,222
Color page %	51%
Utilization %	8%

Do you know if all of your printers are being used and how much?

Knowing where volumes are created helps identify areas for consolidation and helps you select the most efficient printers for replacement.

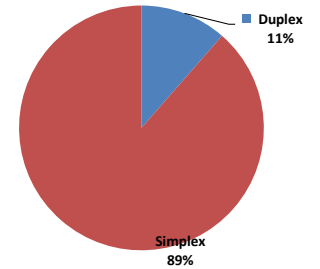
Are you printing a large amount of color volume?

Controlling color volume, which typically costs more than black and white, can help your school save money.

Chart 4 – Duplex Breakdown

This section shows the percentage of duplexed (double-sided) pages printed along with your duplex opportunity. Duplex opportunity is the total number of pages that could be printed duplex and does not include single page documents. Keep in mind, only the newer printers report duplex statistics. The duplex opportunity shows the prior month's print volume, from the printers with duplex statistics, that could have been duplexed.

Duplex Vs. Simplex



Duplex breakdown

Duplex opportunity	52,798
Duplex	11%

Did you know that your printers are able to print on both back and front of the page?

Increasing your school's use of double sided printing helps reduce your environmental impact and will help your school save money.

The average duplex rate for the NYC DOE is 14%

A modest improvement in duplex of 10% would reduce the carbon footprint by over 435,000 pounds of CO₂ per year, and save the DOE over \$78,000 in paper costs annually.

Lexmark printers 6 years and younger all have duplex capability. The following duplex initiatives can reduce paper consumption and save money:

Setting duplex as your default setting on your printer

Educating end users about the benefit of duplex printing.

For more information on how the DOE is focused on Sustainability check:

<http://schools.nyc.gov/community/facilities/sustainability/about/>

Actions you can take to Save your School Money

- Use highest yield toner whenever possible to lower the cost per page.
- Consider replacing printers over 6 years old to optimize eco-friendly printer environment.
- Duplex multiple page documents when possible to reduce paper usage.

Printer details

Model	Serial Number	Age in Years	Utilization	ATS Printer	Avg Mono Pages	Avg Color Pages	Avg Monthly Volume
C544dn	9466GF9	9					

C544dn	9466GDW	9					
C544dn	9453P3Y	9					
C544dw	945B2Y8	7					
C544n	945C64N	4					
CS510DE	502702946TR7M	2	20%	748	677	1425	
CS510de	50270394513GH	7	9%	410	199	609	
CS510de	502722946BF9B	4	26%	851	969	1820	
CS510de	50270394513GP	7					
CS510DE	502702946TR74	2					
CS510de	5027039464N8M	6					
CS510de	5027059464T3M	6	11%	317	450	767	
CS510de	5027059464T24	6					
CS510DE	502717945KW2C	3	36%	1187	1364	2551	
CS510DE	502743945GKV5	3	3%	100	79	179	
CS510de	50270394513D7	7	41%	1426	1409	2835	
CS510de	50270394513GK	6					
CS510de	5027459450BX5	7					
CS510DE	502752945H62N	3	24%	833	879	1712	
CS510DE	502724945MNN2	2					
CS510DE	502729945NKNH	2	19%	710	589	1299	
CS510DE	502702946TR7B	2					
CS510DE	502748945RY0D	2	13%	257	624	881	
CS622DE	50298140402P1	1	11%	585	492	1077	
CS622DE	50298140402NB	1					
CS622DE	50298140402P6	1					
CS622DE	5029845040Y3D	1					
CS622DE	5029903041BPB	0					
CS622DE	5029903041BPN	0					
CS622DE	50299150325D6	0	14%	393	1045	1438	
CS725DE	5028811012GN1	2	41%	2856	5378	8234	
CS725DE	5028811012GN8	2	0%	1		1	
CS725DE	5028811012GN4	2	26%	3724	1387	5111	
CS725DE	5028811012GMR	2	15%	981	1969	2950	
CX510de	7527489466W48	5	26%	139	1656	1795	
CX510de	7527039463XKY	6	14%	169	800	969	
CX510de	7527109460K3Y	6	46%	737	2499	3236	
CX510DE	752723946MCFC	2	3%	59	152	211	
CX510de	7527109460K1Y	7	12%	161	700	861	
CX510de	7527109460K44	7	5%	47	268	315	
CX510de	7527109460K19	4	16%	162	982	1144	
CX510de	7527109460K0P	7					
CX510de	7527109460K25	7	1%		104	104	
CX510de	7527059467HWX	5					
CX510DE	752743946G27Z	3					
CX622ADE	7529838140ZM4	1					
CX622ADE	7529838140ZMC	1					
CX622ADE	7529845141B5Y	1					
CX622ADE	75299081427W1	0	11%	333	757	1090	
CX725DHE	7528818012H3F	1					
CX725DHE	752880901291N	2	16%	2162	1130	3292	
CX725DHE	7528706010Y9M	2	3%	154	402	556	
CX725DHE	7528818012H4X	1	39%	2072	5630	7702	
E460dn	72HP1MN	8	1%	60		60	
E460dn	72HP296	8	21%	2133		2133	
MS510dn	451444HH1F2G4	5					
MS510dn	451445HH1YFK9	5					
MS810	5027519468966	5					
MS810de	406336990D91L	4	2%	456		456	
MX711dhe	74635C6602WH5	4	15%	3816		3816	
MX711dhe	746325990195Y	7	6%	1441		1441	
MX711dhe	74635C66028Y3	4	2%	534		534	
MX711DHHE	74637C6600B1K	3	8%	1918		1918	
MX711DHHE	74637C66009ZK	3					
MX711dhe Low Volt CA US	7463259901953	7					

<< More data continued on Next Page >>

08X071 - Jan 2020 - Page 3

Printer Details - Page 2

Model	Serial Number	Age in Years	Utilization	ATS Printer	Avg Mono Pages	Avg Color Pages	Avg Monthly Volume
T640n	791BP53	13					
T640n	7919XWY	13					
T650n	7940R06	10		Yes			
T650n Low Volt	7951577	8					

