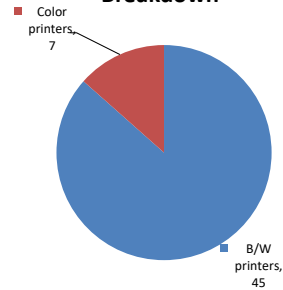


Please find enclosed a snap shot of your school's printer environment. The printer breakdown and data encompasses only the printers we can see on your network. You may have additional printers that are locally connected (e.g. USB attached), but those are not included in this breakdown.

Chart 1 – School Printer Breakdown

This provides your school's enrollment, along with the number of printers, including the distribution between B/W and color printers.

Color/Mono Device Breakdown



P.S. 75 School Of Research And Discovery

Enrollment	599
B/W printers	45
Color printers	7
Total printers	52

From the list provided on page 3 are all of your printers represented? If not, how many are missing Providing Lexmark the asset data that is missing will allow us to give you a more accurate picture of your printer environment.

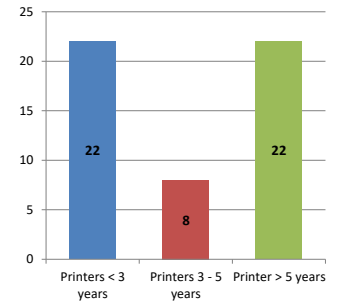
Do you know how many printers you have in your main office, compared to the number of people who sit in the main office?

Reducing the number of devices and using the most efficient models in the right locations can help your school save money.

Chart 2 – Printer Age Statistics

Here we show the average age of your printers and show the distribution among 3 age categories; under 3 years old, 3-5 years old and over 5 years old.

Printer Age Statistics



Printer Age Statistics

Average Age (years)	5
Printers < 3 years	22
Printers 3 - 5 years	8
Printer > 5 years	22

The age of your printer fleet plays a large role in your annual printer maintenance and toner cost. The DOE only supports printers 6 years and younger.

Once the warranty expires and the age of your device exceeds 6 years, maintenance and repairs become very costly.

New printers have higher toner yields than older printers, resulting in lower cost per page which saves money.

Newer printers are Energy Star compliant and have advanced eco settings which help reduce energy usage and saves money.

Glossary

B/W - Black and White Printing Only

Color - Color or Black and White Printing

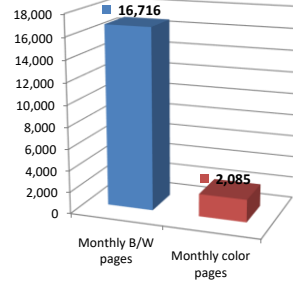
Duplex - Printing on both sides of the paper.

Simplex - Single Sided Printing

Chart 3 – Volume of Pages Printed

This provides your printed page volumes for the previous month for both B/W and color print jobs. In addition, a utilization percentage is calculated by comparing your print volume for each printer to the maximum monthly volume capacity for that printer model.

Color/Mono Pages Printed



Volume of pages printed

Monthly B/W pages	16,716
Monthly color pages	2,085
Total monthly pages	18,801
Color page %	11%
Utilization %	2%

[Do you know if all of your printers are being used and how much?](#)

Knowing where volumes are created helps identify areas for consolidation and helps you select the most efficient printers for replacement.

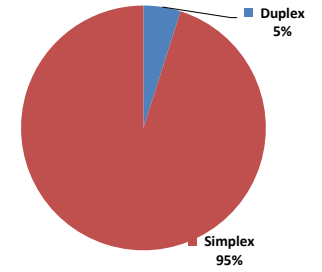
[Are you printing a large amount of color volume?](#)

Controlling color volume, which typically costs more than black and white, can help your school save money.

Chart 4 – Duplex Breakdown

This section shows the percentage of duplexed (double-sided) pages printed along with your duplex opportunity. Duplex opportunity is the total number of pages that could be printed duplex and does not include single page documents. Keep in mind, only the newer printers report duplex statistics. The duplex opportunity shows the prior month's print volume, from the printers with duplex statistics, that could have been duplexed.

Duplex Vs. Simplex



Duplex breakdown

Duplex opportunity	14,191
Duplex	5%

[Did you know that your printers are able to print on both back and front of the page?](#)

Increasing your school's use of double sided printing helps reduce your environmental impact and will help your school save money.

[The average duplex rate for the NYC DOE is 14%](#)

A modest improvement in duplex of 10% would reduce the carbon footprint by over 435,000 pounds of CO₂ per year, and save the DOE over \$78,000 in paper costs annually.

[Lexmark printers 6 years and younger all have duplex capability. The following duplex initiatives can reduce paper consumption and save money:](#)

Setting duplex as your default setting on your printer

Educating end users about the benefit of duplex printing.

[For more information on how the DOE is focused on Sustainability check:](#)

<http://schools.nyc.gov/community/facilities/sustainability/about/>

Actions you can take to Save your School Money

- Use highest yield toner whenever possible to lower the cost per page.
- Consider replacing printers over 6 years old to optimize eco-friendly printer environment.
- Duplex multiple page documents when possible to reduce paper usage.

Printer details

Model	Serial Number	Age in Years	Utilization	ATS Printer	Avg Mono Pages	Avg Color Pages	Avg Monthly Volume
C748de	5026349420TZZ	7					

C748de Low Volt	5026479421367	7				
CS510de	5027339466XNF	5	10%		258	459 717
CS510DE	502743945GKRP	3				
CS725DE	50288480F3F78	1	9%		147	1626 1773
CS725DE	50289220F3ZNV	0				
CS725DE	50289220F3ZRF	0				
E250dn	6206MW5	13				
E460dn	72HP120	8				
E460dn	72HK8BL	9				
E460dn	72R3PW7	7	4%		403	403
E460dn	72R3PT3	7				
E460dn	72R3PXT	7	13%		1258	1258
E460dn	72R3PXK	7	6%		587	587
E460dn	72HFYW7	9				
E460dn	72HFYW6	9				
E460dn	72HFYW9	9	1%		107	107
E460dn	72HP126	7	6%		642	642
E460dn	72HFYT6	9				
E460dn	72HH47L	9				
E460dn	72HH48P	9				
E460dn	72HH47C	9	2%		197	197
MS510DN	45147GHH4DFPH	2				
MS510DN	45147GHH4BX72	2				
MS510dn	451455HH25TK1	5	1%		190	190
MS510dn	451455HH287W1	4				
MS510DN	45147GHH4C8PP	2	1%		174	174
MS510dn	45145PHH2HB9L	4	3%		471	471
MS510dn	451420HH0586M	7	3%		393	393
MS510DN	45146PHH39NRB	3				
MS510DN	45146PHH37158	3				
MS510dn	451432HH0TFR4	6	2%		257	257
MS510DN	45147GHH4BX6V	2				
MS510DN	45147GHH4C95Y	2				
MS510DN	45147GHH4DFR0	2				
MS510DN	45147GHH4DFHD	2	10%		1353	1353
MS621DN	46008280091N8	1				
MS621DN	460083600CZ5X	1				
MS621DN	460083600CZ6K	1	0%		56	56
MS621DN	460083700D8T1	1				
MS621DN	460083700D8VP	1	2%		361	361
MS621DN	460085100L6DR	1	1%		283	283
MS621DN	4600942313T4H	0				
MS621DN	4600942313T4K	0				
MS621DN	4600942313T2N	0				
MS810	45146PHH35FGW	3	0%		307	307
MS822DE	4064902014L9T	1	0%		93	93
MS822DE	4064912015HZL	0				
MS822DE	4064912015HXZ	0	10%		4759	4759
T650n	79412D3	8				
T650n	795GNNN	7		Yes		
X656de	74635C6601307	5	15%	Yes	4420	4420

<< End of Data >>

For more information regarding this snapshot, please contact your Lexmark team

Lexmark Team

CDW Team
CDW Sales Department – 800-705-4239

Title	Name	E-Mail	Phone
Client Executive	Mindy Maher	mmaher@lexmark.com	212-880-2837
Site Operations	Mark Ennis	mennis@lexmark.com	908-210-3030
Systems Engineer	TBD	TBD	TBD

Title	Name	E-Mail	Phone
Sales Manager	John Skidmore	john.skidmore@cdwg.com	(866) 687-3187
Sales Operations	Jon Gray	jongray@cdw.com	(203) 851-7133
		NYCDOE@cdwg.com	