

Lexmark Managed Print Services Monthly Report: Jan 2020
09X109 - P.S. 109 Sedgwick, 1771 Popham Avenue, Bronx, NY 10453

Please find enclosed a snap shot of your school's printer environment. The printer breakdown and data encompasses only the printers we can see on your network. You may have additional printers that are locally connected (e.g. USB attached), but those are not included in this breakdown.

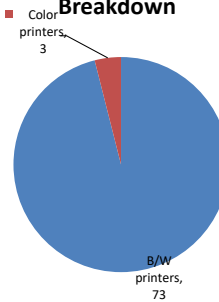
Chart 1 – School Printer Breakdown

This provides your school's enrollment, along with the number of printers, including the distribution between B/W and color printers.

P.S. 109 Sedgwick

Enrollment	572
B/W printers	73
Color printers	3
Total printers	76

Color/Mono Device Breakdown



From the list provided on page 3 are all of your printers represented? If not, how many are missing Providing Lexmark the asset data that is missing will allow us to give you a more accurate picture of your printer environment.

Do you know how many printers you have in your main office, compared to the number of people who sit in the main office?

Reducing the number of devices and using the most efficient models in the right locations can help your school save money.

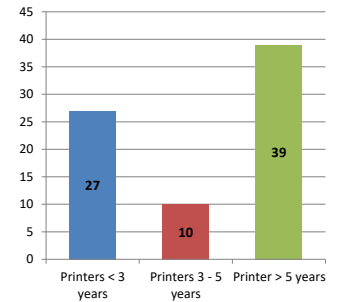
Chart 2 – Printer Age Statistics

Here we show the average age of your printers and show the distribution among 3 age categories; under 3 years old, 3-5 years old and over 5 years old.

Printer Age Statistics

Average Age (years)	5
Printers < 3 years	27
Printers 3 - 5 years	10
Printer > 5 years	39

Printer Age Statistics



The age of your printer fleet plays a large role in your annual printer maintenance and toner cost. The DOE only supports printers 6 years and younger.

Once the warranty expires and the age of your device exceeds 6 years, maintenance and repairs become very costly.

New printers have higher toner yields than older printers, resulting in lower cost per page which saves money.

Newer printers are Energy Star compliant and have advanced eco settings which help reduce energy usage and saves money.

Glossary

B/W - Black and White Printing Only

Color - Color or Black and White Printing

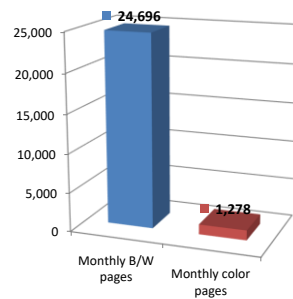
Duplex - Printing on both sides of the paper.

Simplex - Single Sided Printing

Chart 3 – Volume of Pages Printed

This provides your printed page volumes for the previous month for both B/W and color print jobs. In addition, a utilization percentage is calculated by comparing your print volume for each printer to the maximum monthly volume capacity for that printer model.

Color/Mono Pages Printed



Volume of pages printed

Monthly B/W pages	24,696
Monthly color pages	1,278
Total monthly pages	25,974
Color page %	5%
Utilization %	2%

[Do you know if all of your printers are being used and how much?](#)

Knowing where volumes are created helps identify areas for consolidation and helps you select the most efficient printers for replacement.

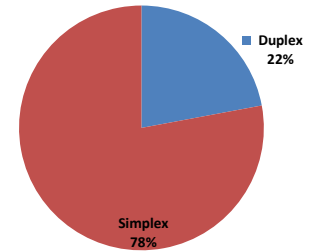
[Are you printing a large amount of color volume?](#)

Controlling color volume, which typically costs more than black and white, can help your school save money.

Chart 4 – Duplex Breakdown

This section shows the percentage of duplexed (double-sided) pages printed along with your duplex opportunity. Duplex opportunity is the total number of pages that could be printed duplex and does not include single page documents. Keep in mind, only the newer printers report duplex statistics. The duplex opportunity shows the prior month's print volume, from the printers with duplex statistics, that could have been duplexed.

Duplex Vs. Simplex



Duplex breakdown

Duplex opportunity	47,648
Duplex	22%

[Did you know that your printers are able to print on both back and front of the page?](#)

Increasing your school's use of double sided printing helps reduce your environmental impact and will help your school save money.

[The average duplex rate for the NYC DOE is 14%](#)

A modest improvement in duplex of 10% would reduce the carbon footprint by over 435,000 pounds of CO₂ per year, and save the DOE over \$78,000 in paper costs annually.

[Lexmark printers 6 years and younger all have duplex capability. The following duplex initiatives can reduce paper consumption and save money:](#)

Setting duplex as your default setting on your printer

Educating end users about the benefit of duplex printing.

[For more information on how the DOE is focused on Sustainability check:](#)

<http://schools.nyc.gov/community/facilities/sustainability/about/>

Actions you can take to Save your School Money

- Use highest yield toner whenever possible to lower the cost per page.
- Consider replacing printers over 6 years old to optimize eco-friendly printer environment.
- Duplex multiple page documents when possible to reduce paper usage.

Printer details

Model	Serial Number	Age in Years	Utilization	ATS Printer	Avg Mono Pages	Avg Color Pages	Avg Monthly Volume
CS510de	5027089464Y1V	5					

CS510de	5027459450BHF	7					
CX510de	7527349469MP5	4	26%		523	1278	1801
E352dn	622MK7T	12					
E352dn	622MHKZ	12					
E352dn	6235HBH	4					
E352dn	622MKP8	12					
E360dn	72M3LM5	11					
E360dn	72M3M5M	11					
E360dn	72MBFW3	10					
E360dn	72MBFYB	9					
E360dn	72M9K3M	9	1%		49		49
E360dn	72M3LLV	11					
E460dn	72HKYXZ	9					
E460dn	72HKZ8X	9					
E460dn	72HKN5G	9					
E460dn	72HKZ8F	9					
E460dn	72HKZ8T	9					
E460dn	72HKZ8Z	9					
E460dn	72HKZ8Y	9					
E460dn	72HHDG0	9					
E460dn	72HKZ65	9					
E460dn	72HKZ74	9					
E460dn	72HKZ4X	9					
E460dn	72HKZ8H	9					
E460dn	72HKZ7Z	9	10%		975		975
MS510dn	451420HH057TK	7	7%	Yes	912		912
MS510dn	451432HH0XZRK	4	1%		73		73
MS510dn	451432HH0RF0G	6	5%		653		653
MS510dn	451420HH057VK	4	1%		84		84
MS510dn	451420HH057V4	7	4%		503		503
MS510dn	451432HH0RF0V	6	3%		392		392
MS510dn	451432HH0XZRY	6	4%		578		578
MS510DN	45146PHH39KKG	3	10%		1440		1440
MS510dn	451432HH0RF0K	6	10%		1398		1398
MS510dn	451444HH1N5GZ	5					
MS510dn	451445HH1YFN9	5	4%		537		537
MS510dn	451432HH0XZKG	6	1%		118		118
MS510DN	45146PHH39KKB	3					
MS510dn	451432HH0RF0L	6	2%		330		330
MS510DN	45146PHH39KK7	3	2%		298		298
MS510DN	45147GHH3V00C	3					
MS510DN	45148PHH4P77D	2					
MS510DN	45148PHH4P77M	2					
MS510DN	45148PHH4P771	2	2%		217		217
MS510DN	45148PHH4P773	2					
MS510DN	45148PHH4P778	2					
MS621DN	460090730NN58	1	3%		540		540
MS621DN	460091130PNCH	1	1%		249		249
MS621DN	460091130PNHG	1					
MS621DN	460091130PNHM	1					
MS621DN	460092430XC1F	1					
MS621DN	460092430XC1H	1					
MS621DN	460092430XC19	1					
MS621DN	460092430XC57	1					
MS621DN	460092430XC6H	1					
MS621DN	460092430XC7C	1	7%		1447		1447
MS621DN	460092430XC7P	1	7%		1404		1404
MS621DN	460092430XC7T	1					
MS621DN	460092430XC7V	1					
MS621DN	460092430XC7W	1	0%		76		76
MS621DN	460092430XC8L	1					
MS621DN	460092430XC8R	1					
MS621DN	460092430XC83	1					
MS621DN	460092430XC85	1					

<< More data continued on Next Page >>

09X109 - Jan 2020 - Page 3

Printer Details - Page 2

Model	Serial Number	Age in Years	Utilization	ATS Printer	Avg Mono Pages	Avg Color Pages	Avg Monthly Volume
MS621DN	460092430XC88	1	3%		697		697
MS621DN	460092430XC89	1					
MS810	45146PHH39KHG	3	3%		2606		2606
MS810de	4063369908T1W	6	16%	Yes	3171		3171

