

Please find enclosed a snap shot of your school's printer environment. The printer breakdown and data encompasses only the printers we can see on your network. You may have additional printers that are locally connected (e.g. USB attached), but those are not included in this breakdown.

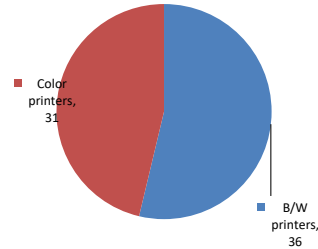
**Chart 1 – School Printer Breakdown**

This provides your school's enrollment, along with the number of printers, including the distribution between B/W and color printers.

**P.S. 204 Morris Heights**

Enrollment	619
B/W printers	36
Color printers	31
Total printers	67

**Color/Mono Device Breakdown**



From the list provided on page 3 are all of your printers represented? If not, how many are missing Providing Lexmark the asset data that is missing will allow us to give you a more accurate picture of your printer environment.

Do you know how many printers you have in your main office, compared to the number of people who sit in the main office?

Reducing the number of devices and using the most efficient models in the right locations can help your school save money.

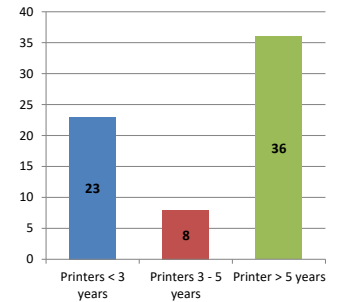
**Chart 2 – Printer Age Statistics**

Here we show the average age of your printers and show the distribution among 3 age categories; under 3 years old, 3-5 years old and over 5 years old.

**Printer Age Statistics**

Average Age (years)	6
Printers < 3 years	23
Printers 3 - 5 years	8
Printer > 5 years	36

**Printer Age Statistics**



The age of your printer fleet plays a large role in your annual printer maintenance and toner cost. The DOE only supports printers 6 years and younger.

Once the warranty expires and the age of your device exceeds 6 years, maintenance and repairs become very costly.

New printers have higher toner yields than older printers, resulting in lower cost per page which saves money.

Newer printers are Energy Star compliant and have advanced eco settings which help reduce energy usage and saves money.

**Glossary**

B/W - Black and White Printing Only

Color - Color or Black and White Printing

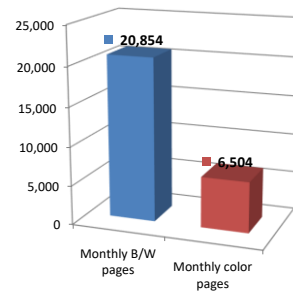
Duplex - Printing on both sides of the paper.

Simplex - Single Sided Printing

### Chart 3 – Volume of Pages Printed

This provides your printed page volumes for the previous month for both B/W and color print jobs. In addition, a utilization percentage is calculated by comparing your print volume for each printer to the maximum monthly volume capacity for that printer model.

Color/Mono Pages Printed



#### Volume of pages printed

Monthly B/W pages	20,854
Monthly color pages	6,504
Total monthly pages	27,358
Color page %	24%
Utilization %	3%

[Do you know if all of your printers are being used and how much?](#)

**Knowing where volumes are created helps identify areas for consolidation and helps you select the most efficient printers for replacement.**

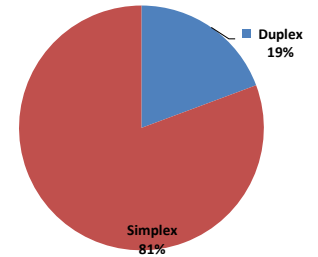
[Are you printing a large amount of color volume?](#)

**Controlling color volume, which typically costs more than black and white, can help your school save money.**

### Chart 4 – Duplex Breakdown

This section shows the percentage of duplexed (double-sided) pages printed along with your duplex opportunity. Duplex opportunity is the total number of pages that could be printed duplex and does not include single page documents. Keep in mind, only the newer printers report duplex statistics. The duplex opportunity shows the prior month's print volume, from the printers with duplex statistics, that could have been duplexed.

Duplex Vs. Simplex



#### Duplex breakdown

Duplex opportunity	13,398
Duplex	19%

[Did you know that your printers are able to print on both back and front of the page?](#)

**Increasing your school's use of double sided printing helps reduce your environmental impact and will help your school save money.**

[The average duplex rate for the NYC DOE is 14%](#)

**A modest improvement in duplex of 10% would reduce the carbon footprint by over 435,000 pounds of CO<sub>2</sub> per year, and save the DOE over \$78,000 in paper costs annually.**

[Lexmark printers 6 years and younger all have duplex capability. The following duplex initiatives can reduce paper consumption and save money:](#)

**Setting duplex as your default setting on your printer**

**Educating end users about the benefit of duplex printing.**

[For more information on how the DOE is focused on Sustainability check:](#)

<http://schools.nyc.gov/community/facilities/sustainability/about/>

## Actions you can take to Save your School Money

Use highest yield toner whenever possible to lower the cost per page.  
 Consider replacing printers over 6 years old to optimize eco-friendly printer environment.  
 Duplex multiple page documents when possible to reduce paper usage.

#### Printer details

Model	Serial Number	Age in Years	Utilization	ATS Printer	Avg Mono Pages	Avg Color Pages	Avg Monthly Volume
CS510de	502722946BFDX	4	3%		56	124	180

CS510de	502752946CXBFB	4	8%	55	523	578
CS510de	502752946CXBK	4	20%	475	955	1430
CS510DE	502743945GKT4	3	1%	9	66	75
CS510de	502728946BX86	4	10%	215	454	669
CS510DE	502738945PWB7	2	12%	303	502	805
CS622DE	5029817040410	1				
CS622DE	5029829040FYH	1	10%	350	612	962
CS622DE	5029845040Y0Z	1	1%	62	41	103
CS622DE	5029845040Y2D	1	8%	203	644	847
CS622DE	50299010417WL	1	6%	161	415	576
CS622DE	50299010417XR	1	12%	625	606	1231
CS622DE	50299010417X3	1	7%	179	568	747
CS622DE	5029903041BLH	0				
CS622DE	5029903041BLN	0				
CS622DE	5029903041BLR	0				
CS622DE	5029903041BNW	0				
CS622DE	5029903041BP6	0				
CS622DE	5029829040GBN	0				
CS622DE	50299230337ZR	0				
CS622DE	50299230337ZW	0				
CS622DE	5029923033806	0				
CS622DE	5029935034M4V	0	1%	18	100	118
CS622DE	5029935034M6F	0				
CX510de Low Volt LAD NA BE	7527069464114	6				
CX622ADE	7529829140HH7	1	6%	110	491	601
CX622ADE	7529845141BH8	1	3%	122	148	270
MS510DN	45147GHH4K6G3	2				
MS510DN	45146PHH3DGXF	3				
MS822DE	4064835012BPN	1	5%	2562		2562
MX410de	70155PLM110PM	4				
MX711DHE	74636C6601WP8	3	9%	Yes	2224	2224
T650dn Low Volt CA US	7944156	10				
T650n	7946NDX	10				
T650n	7946NDL	10				
T650n	794397G	10	2%	440		440
T650n	7946NN5	10	12%	2428		2428
T650n	7944DWL	10	3%	671		671
T650n	7945M1Z	10				
T650n	794419N	10				
T650n	7946NBK	10	4%	894		894
T650n	7945MFV	10	9%	1865		1865
T650n	7946NDR	10	3%	567		567
T650n	79432C8	10				
T650n	7946ND9	10				
T650n	79441PL	10				
T650n	7946NG2	10				
T650n	7946ND8	10				
T650n	7946NDN	10	10%	1924		1924
T650n	7946NKW	10				
T650n	794413W	10				
T650n	79432MF	10	10%	1947		1947
T650n	79441GL	10				
T650n	7946NDK	10	1%	145		145
T650n	7946NF4	10	1%	160		160
T650n	7946NDG	10				
T650n	7945LZ4	10	1%	288		288
T650n	79441GM	10	4%	786		786
T650n	794397C	10				
T650n	7946ND7	10	2%	431		431
T650n	7946NND	10				
T650n	79416C6	8	2%	465		465
T650n	79432PD	10				
X544dn	94F4WH7	9	0%	1	5	6
X544dn	94F4WH8	9	12%	113	250	363

<< More data continued on Next Page >>

09X204 - Jan 2020 - Page 3

### Printer Details - Page 2

Model	Serial Number	Age in Years	Utilization	ATS Printer	Avg Mono Pages	Avg Color Pages	Avg Monthly Volume
X544n	94F72XF	8					
X544n	94F4WCC	9		Yes			
0	0	0					
0	0	0					

