

Please find enclosed a snap shot of your school's printer environment. The printer breakdown and data encompasses only the printers we can see on your network. You may have additional printers that are locally connected (e.g. USB attached), but those are not included in this breakdown.

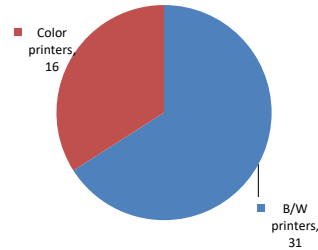
Chart 1 – School Printer Breakdown

This provides your school's enrollment, along with the number of printers, including the distribution between B/W and color printers.

I.S. 232

Enrollment	459
B/W printers	31
Color printers	16
Total printers	47

Color/Mono Device Breakdown



From the list provided on page 3 are all of your printers represented? If not, how many are missing
Providing Lexmark the asset data that is missing will allow us to give you a more accurate picture of your printer environment.

Do you know how many printers you have in your main office, compared to the number of people who sit in the main office?
Reducing the number of devices and using the most efficient models in the right locations can help your school save money.

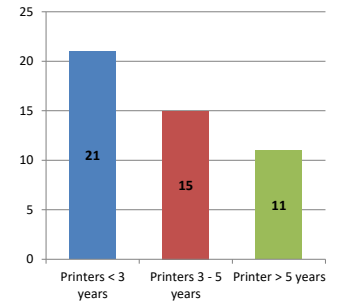
Chart 2 – Printer Age Statistics

Here we show the average age of your printers and show the distribution among 3 age categories; under 3 years old, 3-5 years old and over 5 years old.

Printer Age Statistics

Average Age (years)	4
Printers < 3 years	21
Printers 3 - 5 years	15
Printer > 5 years	11

Printer Age Statistics



The age of your printer fleet plays a large role in your annual printer maintenance and toner cost. The DOE only supports printers 6 years and younger.

Once the warranty expires and the age of your device exceeds 6 years, maintenance and repairs become very costly.

New printers have higher toner yields than older printers, resulting in lower cost per page which saves money.

Newer printers are Energy Star compliant and have advanced eco settings which help reduce energy usage and saves money.

Glossary

B/W - Black and White Printing Only

Color - Color or Black and White Printing

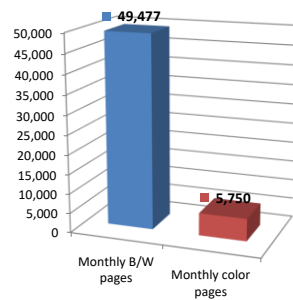
Duplex - Printing on both sides of the paper.

Simplex - Single Sided Printing

Chart 3 – Volume of Pages Printed

This provides your printed page volumes for the previous month for both B/W and color print jobs. In addition, a utilization percentage is calculated by comparing your print volume for each printer to the maximum monthly volume capacity for that printer model.

Color/Mono Pages Printed



Volume of pages printed

Monthly B/W pages	49,477
Monthly color pages	5,750
Total monthly pages	55,227
Color page %	10%
Utilization %	7%

[Do you know if all of your printers are being used and how much?](#)

Knowing where volumes are created helps identify areas for consolidation and helps you select the most efficient printers for replacement.

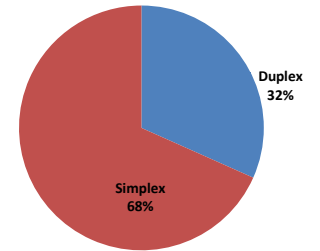
[Are you printing a large amount of color volume?](#)

Controlling color volume, which typically costs more than black and white, can help your school save money.

Chart 4 – Duplex Breakdown

This section shows the percentage of duplexed (double-sided) pages printed along with your duplex opportunity. Duplex opportunity is the total number of pages that could be printed duplex and does not include single page documents. Keep in mind, only the newer printers report duplex statistics. The duplex opportunity shows the prior month's print volume, from the printers with duplex statistics, that could have been duplexed.

Duplex Vs. Simplex



Duplex breakdown

Duplex opportunity	69,847
Duplex	32%

[Did you know that your printers are able to print on both back and front of the page?](#)

Increasing your school's use of double sided printing helps reduce your environmental impact and will help your school save money.

[The average duplex rate for the NYC DOE is 14%](#)

A modest improvement in duplex of 10% would reduce the carbon footprint by over 435,000 pounds of CO₂ per year, and save the DOE over \$78,000 in paper costs annually.

[Lexmark printers 6 years and younger all have duplex capability. The following duplex initiatives can reduce paper consumption and save money:](#)

Setting duplex as your default setting on your printer

Educating end users about the benefit of duplex printing.

[For more information on how the DOE is focused on Sustainability check: <http://schools.nyc.gov/community/facilities/sustainability/about/>](#)

Actions you can take to Save your School Money

Use highest yield toner whenever possible to lower the cost per page.
 Consider replacing printers over 6 years old to optimize eco-friendly printer environment.
 Duplex multiple page documents when possible to reduce paper usage.

Printer details

Model	Serial Number	Age in Years	Utilization	ATS Printer	Avg Mono Pages	Avg Color Pages	Avg Monthly Volume
C748de	5026429422FV1	6					

C748de	5026359420WFH	7					
CX510de	7527059467MR Y	5					
CX510de	752726946559H	5	7%	Yes	143	366	509
CX510de	7527039463XF8	6					
CX510de	7527039463XDM	6					
CX510de	7527489466W6R	5					
CX510DE	752731946NCX8	2					
CX725DHE	7528648010TTP	3					
CX725DHE	7528705010Y65	3	35%	Yes	2065	4984	7049
CX725DHE	7528812012CND	1	4%		464	400	864
CX725DHE	75288100129B2	1		Yes			
CX725DHE	7528649010V7W	3					
CX725DHE	75289200F3ZB8	0					
CX725DHE	75289200F3ZB9	0					
CX725DHE	75289200F3ZFK	0					
E460dn	72HKZBP	9					
LaserjetP2055	CNB9704223	10					
LaserjetP2055	CNB9704230	10					
MS510DN	45147GHH3V3RB	3					
MS510DN	45147GHH3TZYP	3					
MS510DN	45147GHH3TZZB	3					
MS510DN	45147GHH3TZZG	3					
MS510DN	45147GHH3TZZL	3					
MS510DN	45147GHH3TZZ6	3					
MS510DN	45147GHH3TZZ8	3					
MS510DN	45147GHH3V3RC	3	37%		5162		5162
MS510DN	45147GHH3V3RP	3					
MS510DN	45147GHH3V3RT	3					
MS510DN	45147GHH3V3RW	3					
MS510DN	45147GHH3V3T1	3					
MS810de	40634C6600C4W	5	3%	Yes	525		525
MS810de	40635C6600BP1	5	3%	Yes	698		698
MS810de	40635C6600BNM	5	3%	Yes	523		523
MS810de	40635C6600BNK	5	9%		1876		1876
MS810de	40635C6600C9W	5	14%		2838		2838
MS810de	40635C6600BNN	5	18%		3688		3688
MS810de	40635C6600CC3	5	15%		3006		3006
MS810de	40635C6600CBV	5	28%		5581		5581
MS810de	40635C6600CBN	5	13%		2551		2551
MS810de	40635C6600CBY	5	7%		1393		1393
MS810de	40635C6600BPZ	5	16%		3183		3183
MS810de	40635C6600C9Y	5	11%		2258		2258
MS810de	40635C6600BN8	5	11%		2185		2185
MS810de	40635C6600CB1	5	11%		2181		2181
MX410de	701544LM0GKKT	5	92%		9157		9157
MX710de	74635C66015X1	5		Yes			

<< End of Data >>

For more information regarding this snapshot, please contact your Lexmark team

Lexmark Team

CDW Team
CDW Sales Department – 800-705-4239

Title	Name	E-Mail	Phone
Client Executive	Mindy Maher	mmaher@lexmark.com	212-880-2837
Site Operations	Mark Ennis	mennis@lexmark.com	908-210-3030
Systems Engineer	TBD	TBD	TBD

Title	Name	E-Mail	Phone
Sales Manager	John Skidmore	john.skidmore@cdwg.com	(866) 687-3187
Sales Operations	Jon Gray	jongray@cdw.com	(203) 851-7133
		NYCDOE@cdwg.com	