

Please find enclosed a snap shot of your school's printer environment. The printer breakdown and data encompasses only the printers we can see on your network. You may have additional printers that are locally connected (e.g. USB attached), but those are not included in this breakdown.

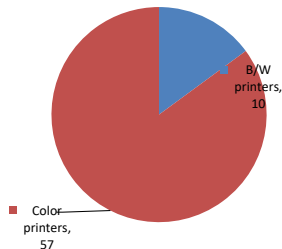
Chart 1 – School Printer Breakdown

This provides your school's enrollment, along with the number of printers, including the distribution between B/W and color printers.

Mount Eden Children'S Academy

Enrollment	432
B/W printers	10
Color printers	57
Total printers	67

Color/Mono Device Breakdown



From the list provided on page 3 are all of your printers represented? If not, how many are missing Providing Lexmark the asset data that is missing will allow us to give you a more accurate picture of your printer environment.

Do you know how many printers you have in your main office, compared to the number of people who sit in the main office? Reducing the number of devices and using the most efficient models in the right locations can help your school save money.

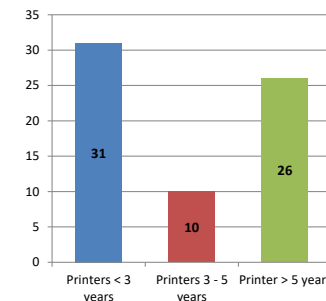
Chart 2 – Printer Age Statistics

Here we show the average age of your printers and show the distribution among 3 age categories; under 3 years old, 3-5 years old and over 5 years old.

Printer Age Statistics

Average Age (years)	4
Printers < 3 years	31
Printers 3 - 5 years	10
Printer > 5 years	26

Printer Age Statistics



The age of your printer fleet plays a large role in your annual printer maintenance and toner cost. The DOE only supports printers 6 years and younger.

Once the warranty expires and the age of your device exceeds 6 years, maintenance and repairs become very costly.

New printers have higher toner yields than older printers, resulting in lower cost per page which saves money.

Newer printers are Energy Star compliant and have advanced eco settings which help reduce energy usage and saves money.

Glossary

B/W - Black and White Printing Only

Color - Color or Black and White Printing

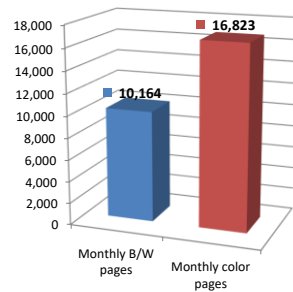
Duplex - Printing on both sides of the paper.

Simplex - Single Sided Printing

Chart 3 – Volume of Pages Printed

This provides your printed page volumes for the previous month for both B/W and color print jobs. In addition, a utilization percentage is calculated by comparing your print volume for each printer to the maximum monthly volume capacity for that printer model.

Color/Mono Pages Printed



Volume of pages printed

Monthly B/W pages	10,164
Monthly color pages	16,823
Total monthly pages	26,987
Color page %	62%
Utilization %	4%

[Do you know if all of your printers are being used and how much?](#)

Knowing where volumes are created helps identify areas for consolidation and helps you select the most efficient printers for replacement.

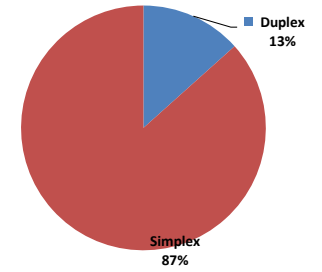
[Are you printing a large amount of color volume?](#)

Controlling color volume, which typically costs more than black and white, can help your school save money.

Chart 4 – Duplex Breakdown

This section shows the percentage of duplexed (double-sided) pages printed along with your duplex opportunity. Duplex opportunity is the total number of pages that could be printed duplex and does not include single page documents. Keep in mind, only the newer printers report duplex statistics. The duplex opportunity shows the prior month's print volume, from the printers with duplex statistics, that could have been duplexed.

Duplex Vs. Simplex



Duplex breakdown

Duplex opportunity	15,032
Duplex	13%

[Did you know that your printers are able to print on both back and front of the page?](#)

Increasing your school's use of double sided printing helps reduce your environmental impact and will help your school save money.

[The average duplex rate for the NYC DOE is 14%](#)

A modest improvement in duplex of 10% would reduce the carbon footprint by over 435,000 pounds of CO₂ per year, and save the DOE over \$78,000 in paper costs annually.

[Lexmark printers 6 years and younger all have duplex capability. The following duplex initiatives can reduce paper consumption and save money:](#)

Setting duplex as your default setting on your printer

Educating end users about the benefit of duplex printing.

[For more information on how the DOE is focused on Sustainability check:](#)

<http://schools.nyc.gov/community/facilities/sustainability/about/>

Actions you can take to Save your School Money

- Use highest yield toner whenever possible to lower the cost per page.
- Consider replacing printers over 6 years old to optimize eco-friendly printer environment.
- Duplex multiple page documents when possible to reduce paper usage.

Printer details

Model	Serial Number	Age in Years	Utilization	ATS Printer	Avg Mono Pages	Avg Color Pages	Avg Monthly Volume
C544dn	9459MRD	8					

C544dn	9453R9W	8					
C544dn	9453RXP	8	19%		342	230	572
C544dn	9453R9F	8					
C544dn	9453RR2	8					
C544dn	9453PRZ	8					
C544dn	9453R9T	8					
C544dn	9453R9H	8					
C544dn	9453RPD	8					
C544dn	9453R8P	8					
C544dn	9459MPG	8					
C544dn	9453R9Y	8					
C544dn	9453RTM	8					
C544dn	9459MPZ	8					
C544dn	9459MR0	8					
C544dn	9459MR2	8					
C544dn	9459MR4	8					
C544dn	9459MP0	8					
C544dn	9459MPN	8	5%		36	120	156
C544dn	9459MRH	8					
C544dn	9453RXZ	8					
C736dn	94471FG	8	9%	Yes	273	665	938
C748de	50263594G57YP	4					
CS510DE	502708946VC06	1					
CS510DE	502706945V50D	1	24%		285	1361	1646
CS510DE	502708946VBZZ	1					
CS510DE	502708946VBZY	1	8%		40	488	528
CS510DE	502708946VC01	1	46%		1047	2159	3206
CS510DE	502708946VC02	1					
CS622DE	5029829040G0G	1					
CS622DE	5029829040FKX	1	1%		47	28	75
CS622DE	5029829040FKT	1	3%		134	212	346
CS622DE	5029829040FKW	1					
CS622DE	5029829040FKY	1					
CS622DE	5029908041LDB	1	0%		10	25	35
CS622DE	5029908041LGR	1	11%		228	902	1130
CS622DE	5029908041LLD	1	8%		115	662	777
CS622DE	5029908041LMC	1	12%		442	710	1152
CS622DE	5029908041LPD	1	13%		645	648	1293
CS622DE	5029908041LPK	1	17%		635	1064	1699
CS622DE	5029908041LRC	1	18%		55	1787	1842
CS622DE	5029908041LRD	1	8%		376	457	833
CS622DE	5029908041LRV	1	3%		4	299	303
CS622DE	5029908041LRW	1	22%		482	1720	2202
CS622DE	5029908041LRY	1	10%		382	606	988
CS622DE	5029908041LR3	1	9%		148	759	907
CS622DE	5029908041LR8	1	3%		60	191	251
CS622DE	5029908041L8T	1	4%		24	342	366
CS622DE	5029908041L9B	1	2%		22	154	176
CS622DE	5029908041L91	1	4%		59	317	376
CX510de	752751946BKRB	4	1%		14	71	85
CX510DE	752731946DVNH	3		Yes			
CX510de	752751946BKRH	4	5%		27	303	330
CX622ADE	7529836140VR2	1					
CX725DHE	75288100129B9	1		Yes			
CX725DHE	7528625010C9H	3	4%	Yes	214	543	757
MS510DN	45147GHH4DFGC	2					
MS810DE	40636C6606DLG	3					
MX410DE	70156PLM16YVH	3	7%	Yes	678		678
MX410de	70155PLM0XXX8	4					
MX711DHHE	74637D6601KKG	2	6%	Yes	1583		1583
T650dn	7955LNH	4	7%		1489		1489
T650n	7959XDP	8					
T650n	7959XDW	8					
T650n	7959X5K	8	1%		268		268

<< More data continued on Next Page >>

09X555 - Jan 2020 - Page 3

Printer Details - Page 2

Model	Serial Number	Age in Years	Utilization	ATS Printer	Avg Mono Pages	Avg Color Pages	Avg Monthly Volume
X656de	79G545K	8		Yes			
X748de	7526219442B74	4		Yes			
0	0	0					
0	0	0					

