

# Lexmark Managed Print Services Monthly Report: Jan 2020

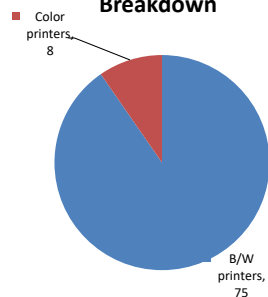
## 10X008 - PUBLIC SCHOOL 8, 3010 BRIGGS AVE, Bronx, NY 10458-1699

Please find enclosed a snap shot of your school's printer environment. The printer breakdown and data encompasses only the printers we can see on your network. You may have additional printers that are locally connected (e.g. USB attached), but those are not included in this breakdown.

### Chart 1 – School Printer Breakdown

This provides your school's enrollment, along with the number of printers, including the distribution between B/W and color printers.

**Color/Mono Device Breakdown**



#### PUBLIC SCHOOL 8

Enrollment	894
B/W printers	75
Color printers	8
Total printers	83

From the list provided on page 3 are all of your printers represented? If not, how many are missing  
**Providing Lexmark the asset data that is missing will allow us to give you a more accurate picture of your printer environment.**

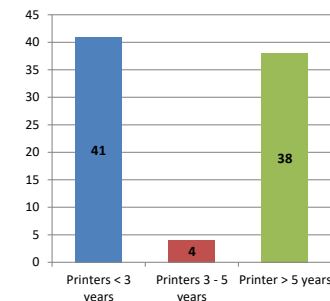
Do you know how many printers you have in your main office, compared to the number of people who sit in the main office?

**Reducing the number of devices and using the most efficient models in the right locations can help your school save money.**

### Chart 2 – Printer Age Statistics

Here we show the average age of your printers and show the distribution among 3 age categories; under 3 years old, 3-5 years old and over 5 years old.

**Printer Age Statistics**



#### Printer Age Statistics

Average Age (years)	4
Printers < 3 years	41
Printers 3 - 5 years	4
Printer > 5 years	38

The age of your printer fleet plays a large role in your annual printer maintenance and toner cost. The DOE only supports printers 6 years and younger.

**Once the warranty expires and the age of your device exceeds 6 years, maintenance and repairs become very costly.**

**New printers have higher toner yields than older printers, resulting in lower cost per page which saves money.**

**Newer printers are Energy Star compliant and have advanced eco settings which help reduce energy usage and saves money.**

### Glossary

B/W - Black and White Printing Only

Color - Color or Black and White Printing

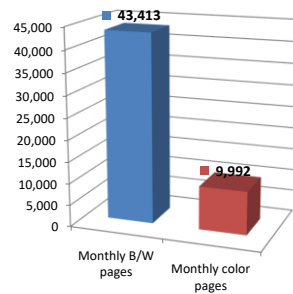
Duplex - Printing on both sides of the paper.

Simplex - Single Sided Printing

### Chart 3 – Volume of Pages Printed

This provides your printed page volumes for the previous month for both B/W and color print jobs. In addition, a utilization percentage is calculated by comparing your print volume for each printer to the maximum monthly volume capacity for that printer model.

Color/Mono Pages Printed



#### Volume of pages printed

Monthly B/W pages	43,413
Monthly color pages	9,992
Total monthly pages	53,405
Color page %	19%
Utilization %	4%

[Do you know if all of your printers are being used and how much?](#)

**Knowing where volumes are created helps identify areas for consolidation and helps you select the most efficient printers for replacement.**

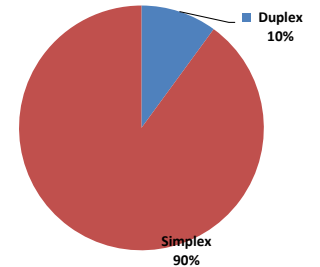
[Are you printing a large amount of color volume?](#)

**Controlling color volume, which typically costs more than black and white, can help your school save money.**

### Chart 4 – Duplex Breakdown

This section shows the percentage of duplexed (double-sided) pages printed along with your duplex opportunity. Duplex opportunity is the total number of pages that could be printed duplex and does not include single page documents. Keep in mind, only the newer printers report duplex statistics. The duplex opportunity shows the prior month's print volume, from the printers with duplex statistics, that could have been duplexed.

Duplex Vs. Simplex



#### Duplex breakdown

Duplex opportunity	14,902
Duplex	10%

[Did you know that your printers are able to print on both back and front of the page?](#)

**Increasing your school's use of double sided printing helps reduce your environmental impact and will help your school save money.**

[The average duplex rate for the NYC DOE is 14%](#)

**A modest improvement in duplex of 10% would reduce the carbon footprint by over 435,000 pounds of CO<sub>2</sub> per year, and save the DOE over \$78,000 in paper costs annually.**

[Lexmark printers 6 years and younger all have duplex capability. The following duplex initiatives can reduce paper consumption and save money:](#)

**Setting duplex as your default setting on your printer**

**Educating end users about the benefit of duplex printing.**

[For more information on how the DOE is focused on Sustainability check:](#)

<http://schools.nyc.gov/community/facilities/sustainability/about/>

## Actions you can take to Save your School Money

- Use highest yield toner whenever possible to lower the cost per page.
- Consider replacing printers over 6 years old to optimize eco-friendly printer environment.
- Duplex multiple page documents when possible to reduce paper usage.

#### Printer details

Model	Serial Number	Age in Years	Utilization	ATS Printer	Avg Mono Pages	Avg Color Pages	Avg Monthly Volume
CSS10DE	502733945P395	2	2%		66	107	173

CS510de	502703946147C	7	39%		257	2488	2745
CS510DE	502747946GRMR	3					
CX725DHE	7528818012H30	1	38%	Yes	929	6739	7668
CX725DHE	75288250F2P59	0					
E360dn	72M47R9	11					
E360dn	72M48MM	11					
E460dn	72HK84T	9					
E460dn	72HK7DL	9					
E460dn	72HK7FK	9					
E460dn	72HK7DZ	8					
E460dn	72HK7FL	9					
E460dn	72HK7DP	9					
E460dn	72HK7FB	8					
E460dn	72HK7FX	9					
E460dn	72HK7FH	9					
E460dn	72HK7FV	9					
E460dn	72HK7DD	9					
E460dn	72HN08F	8					
MS510DN	45147GHH42K56	2	4%		497		497
MS510dn	451420HH0567N	7	15%		2042		2042
MS510dn	451431HH09LX5	7					
MS510dn	451431HH09LX2	7	3%		454		454
MS510dn	451431HH09LXF	7					
MS510DN	45147GHH42HZC	2	22%		3011		3011
MS510DN	45146PHH39KW4	3					
MS510dn	451420HH05Z6R	7					
MS510dn	451431HH09LX4	7					
MS510dn	451420HH05Z66	6					
MS510dn	451420HH05Z60	7					
MS510DN	45147GHH4HNXV	2	6%		903		903
MS510dn	451420HH0544V	7					
MS510dn	451420HH054GY	7					
MS510dn	451420HH05Z6L	7	13%		1848		1848
MS510DN	45147GHH4HNXT	2	8%		1183		1183
MS510dn	451420HH03HGB	7	19%		2720		2720
MS510dn	451420HH05Z69	6					
MS510DN	45147GHH4HNXC	2	2%		239		239
MS510DN	45147GHH428FZ	2	5%		756		756
MS510DN	45147GHH4HNVL	2	1%		108		108
MS510dn	451431HH09LXK	7					
MS510DN	45146PHH39NGG	3	1%		122		122
MS510DN	45147GHH428FR	2					
MS510DN	45147GHH428FX	2					
MS510DN	45147GHH4HNXG	2					
MS510DN	45147GHH4HNXW	2					
MS621DN	460085100L6DB	1					
MS621DN	460085100L6DC	1					
MS621DN	460085100L6DD	1	2%		322		322
MS621DN	460085100L6D3	1	3%		558		558
MS621DN	460085100L6D4	1					
MS621DN	460085100L6D5	1	7%		1388		1388
MS621DN	460085100L6D7	1	11%		2232		2232
MS621DN	460085100L6D9	1	3%		539		539
MS621DN	460085100L6M2	1	4%		702		702
MS621DN	460085100L6NC	1	9%		1816		1816
MS621DN	460085100L6NG	1					
MS621DN	460085100L6NR	1	1%		173		173
MS621DN	460085100L6NT	1					
MS621DN	460085100L6NV	1	2%		495		495
MS621DN	460085100L6NWX	1					
MS621DN	460085100L6NY	1					
MS621DN	460085100L6NZ	1	11%		2145		2145
MS621DN	460085100L6P2	1	6%		1213		1213
MS621DN	460085100L6P4	1	6%		1181		1181

<< More data continued on Next Page >>

10X008 - Jan 2020 - Page 3

### Printer Details - Page 2

Model	Serial Number	Age in Years	Utilization	ATS Printer	Avg Mono Pages	Avg Color Pages	Avg Monthly Volume
MS621DN	460085100L6P9	1					
MS621DN	460090530NFF0	1					
MS621DN	460090530NFCT	1	9%		1739		1739
MS621DN	460093531148X	0	0%		48		48

