

Please find enclosed a snap shot of your school's printer environment. The printer breakdown and data encompasses only the printers we can see on your network. You may have additional printers that are locally connected (e.g. USB attached), but those are not included in this breakdown.

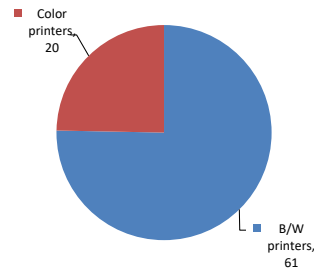
**Chart 1 – School Printer Breakdown**

This provides your school's enrollment, along with the number of printers, including the distribution between B/W and color printers.

**P.S. 094 Kings College School**

Enrollment	1156
B/W printers	61
Color printers	20
Total printers	81

**Color/Mono Device Breakdown**



From the list provided on page 3 are all of your printers represented? If not, how many are missing Providing Lexmark the asset data that is missing will allow us to give you a more accurate picture of your printer environment.

Do you know how many printers you have in your main office, compared to the number of people who sit in the main office?

Reducing the number of devices and using the most efficient models in the right locations can help your school save money.

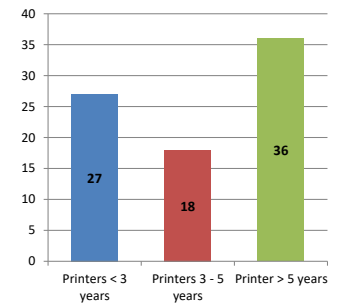
**Chart 2 – Printer Age Statistics**

Here we show the average age of your printers and show the distribution among 3 age categories; under 3 years old, 3-5 years old and over 5 years old.

**Printer Age Statistics**

Average Age (years)	5
Printers < 3 years	27
Printers 3 - 5 years	18
Printer > 5 years	36

**Printer Age Statistics**



The age of your printer fleet plays a large role in your annual printer maintenance and toner cost. The DOE only supports printers 6 years and younger.

Once the warranty expires and the age of your device exceeds 6 years, maintenance and repairs become very costly.

New printers have higher toner yields than older printers, resulting in lower cost per page which saves money.

Newer printers are Energy Star compliant and have advanced eco settings which help reduce energy usage and saves money.

**Glossary**

B/W - Black and White Printing Only

Color - Color or Black and White Printing

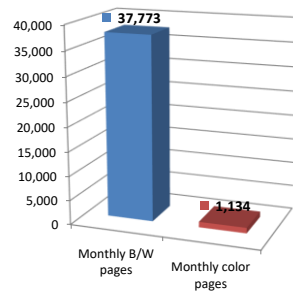
Duplex - Printing on both sides of the paper.

Simplex - Single Sided Printing

### Chart 3 – Volume of Pages Printed

This provides your printed page volumes for the previous month for both B/W and color print jobs. In addition, a utilization percentage is calculated by comparing your print volume for each printer to the maximum monthly volume capacity for that printer model.

Color/Mono Pages Printed



**Volume of pages printed**

Monthly B/W pages	37,773
Monthly color pages	1,134
Total monthly pages	38,907
Color page %	3%
Utilization %	3%

[Do you know if all of your printers are being used and how much?](#)

**Knowing where volumes are created helps identify areas for consolidation and helps you select the most efficient printers for replacement.**

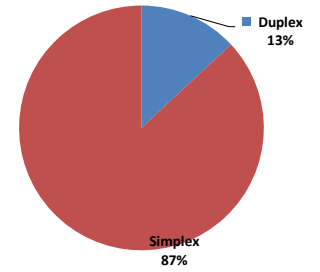
[Are you printing a large amount of color volume?](#)

**Controlling color volume, which typically costs more than black and white, can help your school save money.**

### Chart 4 – Duplex Breakdown

This section shows the percentage of duplexed (double-sided) pages printed along with your duplex opportunity. Duplex opportunity is the total number of pages that could be printed duplex and does not include single page documents. Keep in mind, only the newer printers report duplex statistics. The duplex opportunity shows the prior month's print volume, from the printers with duplex statistics, that could have been duplexed.

Duplex Vs. Simplex



**Duplex breakdown**

Duplex opportunity	35,613
Duplex	13%

[Did you know that your printers are able to print on both back and front of the page?](#)

**Increasing your school's use of double sided printing helps reduce your environmental impact and will help your school save money.**

[The average duplex rate for the NYC DOE is 14%](#)

**A modest improvement in duplex of 10% would reduce the carbon footprint by over 435,000 pounds of CO<sub>2</sub> per year, and save the DOE over \$78,000 in paper costs annually.**

[Lexmark printers 6 years and younger all have duplex capability. The following duplex initiatives can reduce paper consumption and save money:](#)

**Setting duplex as your default setting on your printer**

**Educating end users about the benefit of duplex printing.**

[For more information on how the DOE is focused on Sustainability check:](#)

<http://schools.nyc.gov/community/facilities/sustainability/about/>

## Actions you can take to Save your School Money

- Use highest yield toner whenever possible to lower the cost per page.
- Consider replacing printers over 6 years old to optimize eco-friendly printer environment.
- Duplex multiple page documents when possible to reduce paper usage.

**Printer details**

Model	Serial Number	Age in Years	Utilization	ATS Printer	Avg Mono Pages	Avg Color Pages	Avg Monthly Volume
C510	5802C31	15					

C748de	5026499422R4H	6				
C748de	5026499422R5V	6	1%	39	18	57
C748de	5026499422R4D	6				
C748de	5026499422R4W	6	0%	8	1	9
C748de	5026499422R4R	6				
CS510DE	502717945KW0V	3				
CS622DE	5029829040FN5	1				
CS622DE	5029829040FMG	1				
CS622DE	5029829040FMN	1				
CS622DE	5029829040FM8	1				
CS622DE	5029829040FN1	1				
CS622DE	5029829040FN4	1				
CX510DE	752723946MCBK	2				
CX510DE	752723946MCHB	2	9%	173	477	650
CX510DE	752723946MCK0	2				
CX622ADE	7529827140F1F	1				
CX622ADE	752993114585D	0				
CX725DHE	7528648010TTK	3	4%	248	638	886
E250dn	620GKCL	13				
E250dn	620GKDZ	13				
E360dn	72M482L	11	8%	493		493
E360dn	72M4867	11				
E360dn	72M486B	11				
E360dn	72M4865	11	7%	432		432
E360dn	72M482M	11	44%	2633		2633
E460dn	72HP6TP	8	3%	324		324
E460dn	72HP6T1	8				
E460dn	72HP6R9	8	11%	1129		1129
E460dn	72HP6TB	8	4%	431		431
E460dn	72HP6R7	8	2%	192		192
LaserjetP2055	CNB9303318	10	6%	178		178
LaserjetP2055	CNB9303305	10	12%	350		350
LaserjetP2055	CNB1800264	10				
LaserjetP2055	CNB9303310	10	80%	2409		2409
LaserjetP2055	CNB9303441	10				
MS510DN	45147GHH3XDLH	3	10%	1410		1410
MS510dn	45145PHH2N5PY	4	3%	433		433
MS510dn	45145PHH2HB56	4	1%	177		177
MS510dn	451420HH03KLZ	7				
MS510dn	451455HH28BBP	4	3%	385		385
MS510dn	45145PHH2HB3V	4	4%	493		493
MS510dn	45145PHH2HB57	4	4%	549		549
MS510dn	45145PHH2VXZF	4	4%	552		552
MS510dn	451420HH03KHX	7				
MS510dn	451455HH26XMP	5				
MS510dn	45145PHH2VY2K	4	6%	873		873
MS510DN	701532LM05XPX	6				
MS510dn	451455HH26X3Y	5	23%	3242		3242
MS510DN	45147GHH4BX89	2				
MS510DN	45147GHH4BX95	2	3%	433		433
MS621DN	46008230065HD	1	1%	297		297
MS621DN	46008140025ZM	1				
MS621DN	4600814002600	1				
MS621DN	460085100L6CY	1	3%	504		504
MS621DN	460093531140T	0				
MS810	45145PHH2VXZC	4				
MS810DE	40637D66044GM	2	0%	46		46
MS810de	4063369908LKM	6	48%	9584	Yes	9584
MS810DE	40636C6604LB2	3	7%	1446	Yes	1446
MS810DE	40637C6601XF3	2	2%	365		365
MS810DE	40638D6600BP4	2				
MS822DE	4064835012BTV	1	2%	1070		1070
MX410DE	70156PLM19MPB	3	4%	425		425
MX410DE	70156PLM19MN9	3	5%	523		523

<< More data continued on Next Page >>

10X094 - Jan 2020 - Page 3

## Printer Details - Page 2

Model	Serial Number	Age in Years	Utilization	ATS Printer	Avg Mono Pages	Avg Color Pages	Avg Monthly Volume
MX410DE	70156PLM19MR0	3	10%		1014		1014
MX410DE	70156PLM19MNL	3	3%		337		337
MX410DE	70156PLM19MPK	3	11%		1091		1091
MX410de	701532LM05XPW	6	3%	Yes	347		347

MX410de	701532LM05Y65	6				
MX410de	701532LM05XP6	6				
MX410de	701532LM05XR9	6	20%		1968	1968
MX410DE	70156PLM19MNM	3				
MX522ADHE	70178361055YD	1				
MX711dhe	74635C6602GCC	4	3%	Yes	826	826
MX722ADHE	74648190202P5	1	0%	Yes	344	344
SVCE322	990DONX	17				
T640n	79234XB	12				
T640n	792NVR9	11				
T650n	794L0L8	9				
T650n	794L0KX	9				
0	0	0				
0	0	0				
0	0	0				
0	0	0				
0	0	0				
0	0	0				
0	0	0				
0	0	0				
0	0	0				
0	0	0				
0	0	0				
0	0	0				
0	0	0				
0	0	0				
0	0	0				
0	0	0				
0	0	0				
0	0	0				
0	0	0				
0	0	0				
0	0	0				
0	0	0				
0	0	0				
0	0	0				
0	0	0				
0	0	0				
0	0	0				
0	0	0				
0	0	0				
0	0	0				
0	0	0				
0	0	0				
0	0	0				
0	0	0				
0	0	0				
0	0	0				
0	0	0				
0	0	0				
0	0	0				
0	0	0				
0	0	0				

<< End of Data >>

For more information regarding this snapshot, please contact your Lexmark team

**Lexmark Team**

Title	Name	E-Mail	Phone
Client Executive	Mindy Maher	<a href="mailto:mmaher@lexmark.com">mmaher@lexmark.com</a>	212-880-2837
Site Operations	Mark Ennis	<a href="mailto:mennis@lexmark.com">mennis@lexmark.com</a>	908-210-3030
Systems Engineer	TBD	TBD	TBD

**CDW Team  
CDW Sales Department – 800-705-4239**

Title	Name	E-Mail	Phone
Sales Manager	John Skidmore	<a href="mailto:john.skidmore@cdwg.com">john.skidmore@cdwg.com</a>	(866) 687-3187
Sales Operations	Jon Gray	<a href="mailto:jongray@cdw.com">jongray@cdw.com</a>	(203) 851-7133
<a href="mailto:NYCDOE@cdwg.com">NYCDOE@cdwg.com</a>			