

Please find enclosed a snap shot of your school's printer environment. The printer breakdown and data encompasses only the printers we can see on your network. You may have additional printers that are locally connected (e.g. USB attached), but those are not included in this breakdown.

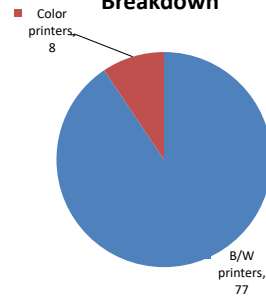
Chart 1 – School Printer Breakdown

This provides your school's enrollment, along with the number of printers, including the distribution between B/W and color printers.

J.H.S. 118 William W. Niles

Enrollment	1057
B/W printers	77
Color printers	8
Total printers	85

Color/Mono Device Breakdown



From the list provided on page 3 are all of your printers represented? If not, how many are missing Providing Lexmark the asset data that is missing will allow us to give you a more accurate picture of your printer environment.

Do you know how many printers you have in your main office, compared to the number of people who sit in the main office? Reducing the number of devices and using the most efficient models in the right locations can help your school save money.

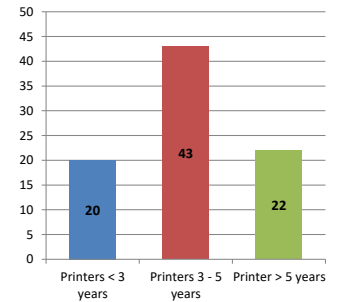
Chart 2 – Printer Age Statistics

Here we show the average age of your printers and show the distribution among 3 age categories; under 3 years old, 3-5 years old and over 5 years old.

Printer Age Statistics

Average Age (years)	5
Printers < 3 years	20
Printers 3 - 5 years	43
Printer > 5 years	22

Printer Age Statistics



The age of your printer fleet plays a large role in your annual printer maintenance and toner cost. The DOE only supports printers 6 years and younger.

Once the warranty expires and the age of your device exceeds 6 years, maintenance and repairs become very costly.

New printers have higher toner yields than older printers, resulting in lower cost per page which saves money.

Newer printers are Energy Star compliant and have advanced eco settings which help reduce energy usage and saves money.

Glossary

B/W - Black and White Printing Only

Color - Color or Black and White Printing

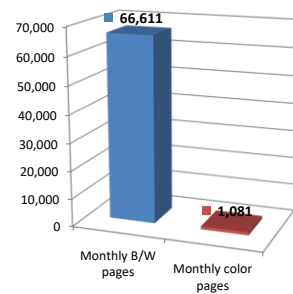
Duplex - Printing on both sides of the paper.

Simplex - Single Sided Printing

Chart 3 – Volume of Pages Printed

This provides your printed page volumes for the previous month for both B/W and color print jobs. In addition, a utilization percentage is calculated by comparing your print volume for each printer to the maximum monthly volume capacity for that printer model.

Color/Mono Pages Printed



Volume of pages printed

Monthly B/W pages	66,611
Monthly color pages	1,081
Total monthly pages	67,692
Color page %	2%
Utilization %	5%

[Do you know if all of your printers are being used and how much?](#)

Knowing where volumes are created helps identify areas for consolidation and helps you select the most efficient printers for replacement.

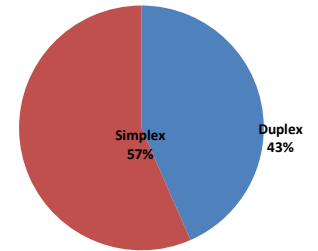
[Are you printing a large amount of color volume?](#)

Controlling color volume, which typically costs more than black and white, can help your school save money.

Chart 4 – Duplex Breakdown

This section shows the percentage of duplexed (double-sided) pages printed along with your duplex opportunity. Duplex opportunity is the total number of pages that could be printed duplex and does not include single page documents. Keep in mind, only the newer printers report duplex statistics. The duplex opportunity shows the prior month's print volume, from the printers with duplex statistics, that could have been duplexed.

Duplex Vs. Simplex



Duplex breakdown

Duplex opportunity	42,549
Duplex	43%

[Did you know that your printers are able to print on both back and front of the page?](#)

Increasing your school's use of double sided printing helps reduce your environmental impact and will help your school save money.

[The average duplex rate for the NYC DOE is 14%](#)

A modest improvement in duplex of 10% would reduce the carbon footprint by over 435,000 pounds of CO₂ per year, and save the DOE over \$78,000 in paper costs annually.

[Lexmark printers 6 years and younger all have duplex capability. The following duplex initiatives can reduce paper consumption and save money:](#)

Setting duplex as your default setting on your printer

Educating end users about the benefit of duplex printing.

[For more information on how the DOE is focused on Sustainability check:](#)

<http://schools.nyc.gov/community/facilities/sustainability/about/>

Actions you can take to Save your School Money

- Use highest yield toner whenever possible to lower the cost per page.
- Consider replacing printers over 6 years old to optimize eco-friendly printer environment.
- Duplex multiple page documents when possible to reduce paper usage.

Printer details

Model	Serial Number	Age in Years	Utilization	ATS Printer	Avg Mono Pages	Avg Color Pages	Avg Monthly Volume
CSS10DE	502745945RGMP	2	1%		19	69	88

CX510de	7527179468FPH	4	7%	175	318	493
CX510de	7527059467MV0	5	5%	61	283	344
CX510de	75272694692F3	4				
CX622ADE	7529838140ZGC	1				
CX622ADE	7529836140VLY	1	1%	4	88	92
CX622ADE	7529836140VLL	1	2%	21	203	224
CX622ADE	7529838140ZLK	1	1%		120	120
E250dn	72BNKYD	14				
E250dn	720VRCN	15				
E352dn	622MHCY	12				
E352dn	622MHFC	12				
E352dn	622MHHB	12				
E352dn	622MHC0	12				
E352dn	622MHCD	12	4%	237		237
E460dn	72HYPRL	7				
E460dn	72HYPRG	7	1%	72		72
E460dn	72HYPT0	7	8%	764		764
E460dn	72HYPR6	7	9%	935		935
E460dn	72HYT68	7				
E460dn	72HYPR7	7				
MS510dn	451455HH26WW5	5	4%	500		500
MS510dn	451455HH25VHT	5	5%	714		714
MS510dn	451455HH25VHK	5	27%	3785		3785
MS510dn	451455HH26XXL	5	11%	1490		1490
MS510dn	451455HH25TBB	5	16%	2260		2260
MS510dn	451455HH26XX5	5	2%	308		308
MS510dn	451455HH25TDT	5	6%	823		823
MS510dn	451455HH26X4M	5	9%	1267		1267
MS510dn	451455HH25TD9	5	25%	3548		3548
MS510dn	451455HH25TFM	5	11%	1534		1534
MS510dn	451455HH26WV5	5	11%	1542		1542
MS510dn	451455HH25TF8	5	36%	5030		5030
MS510dn	451455HH25VDX	5	11%	1509		1509
MS510dn	451455HH25TH7	5				
MS510dn	451455HH25VG6	5	3%	354		354
MS510dn	451455HH25VH6	5	13%	1867		1867
MS510DN	75272694692F9	4	0%	3		3
MS510dn	451455HH26XXM	5	3%	463		463
MS510dn	451455HH25VH3	5	9%	1213		1213
MS510dn	451455HH25TL7	5	16%	2253		2253
MS510dn	451455HH26XXP	5	4%	492		492
MS510dn	451455HH26X54	5				
MS510dn	451455HH25VHC	5	22%	3030		3030
MS510dn	451455HH26XXN	5	7%	922		922
MS510dn	451455HH25VHG	5	4%	541		541
MS510dn	451455HH25VCG	5	4%	500		500
MS510dn	451455HH25VH9	5	0%	29		29
MS510dn	451455HH25TDP	5	0%	19		19
MS510dn	451455HH25TL2	5				
MS510dn	451455HH25VH7	5				
MS510dn	451455HH25VHD	5	10%	1396		1396
MS510dn	451455HH26XXF	5	35%	4923		4923
MS510dn	451455HH26XXC	5	3%	364		364
MS510dn	451455HH25T9Y	5				
MS510dn	451455HH25THY	5	14%	1901		1901
MS510dn	451455HH25TDB	5	13%	1807		1807
MS510dn	451455HH25VG2	5	9%	1232		1232
MS510dn	451455HH25VH5	5	8%	1119		1119
MS510dn	451455HH26XVK	5				
MS621DN	460083600CZ80	1	3%	663		663
MS621DN	460083600CZ7R	1	3%	686		686
MS621DN	460083600CZ7B	1				
MS621DN	460083600CZ7K	1	2%	321		321
MS621DN	460083600CZ7N	1				

<< More data continued on Next Page >>

10X118 - Jan 2020 - Page 3

Printer Details - Page 2

Model	Serial Number	Age in Years	Utilization	ATS Printer	Avg Mono Pages	Avg Color Pages	Avg Monthly Volume
MS621DN	460083600CZ7V	1					
MS621DN	460083600CZ7W	1	1%		225		225
MS621DN	460083600CZ82	1					
MS810de	40635C66001N1	5	2%	Yes	401		401

