

Please find enclosed a snap shot of your school's printer environment. The printer breakdown and data encompasses only the printers we can see on your network. You may have additional printers that are locally connected (e.g. USB attached), but those are not included in this breakdown.

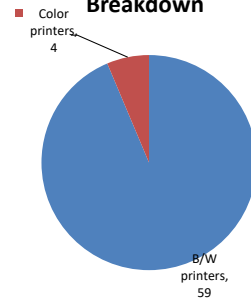
Chart 1 – School Printer Breakdown

This provides your school's enrollment, along with the number of printers, including the distribution between B/W and color printers.

P.S. 205 Fiorello Laguardia

Enrollment	901
B/W printers	59
Color printers	4
Total printers	63

Color/Mono Device Breakdown



From the list provided on page 3 are all of your printers represented? If not, how many are missing Providing Lexmark the asset data that is missing will allow us to give you a more accurate picture of your printer environment.

Do you know how many printers you have in your main office, compared to the number of people who sit in the main office?

Reducing the number of devices and using the most efficient models in the right locations can help your school save money.

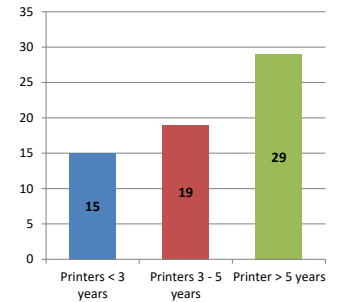
Chart 2 – Printer Age Statistics

Here we show the average age of your printers and show the distribution among 3 age categories; under 3 years old, 3-5 years old and over 5 years old.

Printer Age Statistics

Average Age (years)	5
Printers < 3 years	15
Printers 3 - 5 years	19
Printer > 5 years	29

Printer Age Statistics



The age of your printer fleet plays a large role in your annual printer maintenance and toner cost. The DOE only supports printers 6 years and younger.

Once the warranty expires and the age of your device exceeds 6 years, maintenance and repairs become very costly.

New printers have higher toner yields than older printers, resulting in lower cost per page which saves money.

Newer printers are Energy Star compliant and have advanced eco settings which help reduce energy usage and saves money.

Glossary

B/W - Black and White Printing Only

Color - Color or Black and White Printing

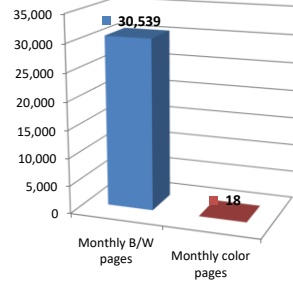
Duplex - Printing on both sides of the paper.

Simplex - Single Sided Printing

Chart 3 – Volume of Pages Printed

This provides your printed page volumes for the previous month for both B/W and color print jobs. In addition, a utilization percentage is calculated by comparing your print volume for each printer to the maximum monthly volume capacity for that printer model.

Color/Mono Pages Printed



Volume of pages printed

Monthly B/W pages	30,539
Monthly color pages	18
Total monthly pages	30,557
Color page %	0%
Utilization %	3%

[Do you know if all of your printers are being used and how much?](#)

Knowing where volumes are created helps identify areas for consolidation and helps you select the most efficient printers for replacement.

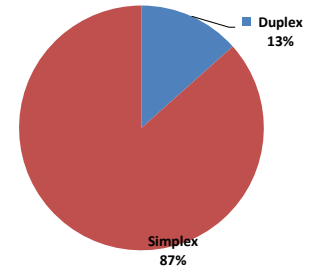
[Are you printing a large amount of color volume?](#)

Controlling color volume, which typically costs more than black and white, can help your school save money.

Chart 4 – Duplex Breakdown

This section shows the percentage of duplexed (double-sided) pages printed along with your duplex opportunity. Duplex opportunity is the total number of pages that could be printed duplex and does not include single page documents. Keep in mind, only the newer printers report duplex statistics. The duplex opportunity shows the prior month's print volume, from the printers with duplex statistics, that could have been duplexed.

Duplex Vs. Simplex



Duplex breakdown

Duplex opportunity	67,751
Duplex	13%

[Did you know that your printers are able to print on both back and front of the page?](#)

Increasing your school's use of double sided printing helps reduce your environmental impact and will help your school save money.

[The average duplex rate for the NYC DOE is 14%](#)

A modest improvement in duplex of 10% would reduce the carbon footprint by over 435,000 pounds of CO₂ per year, and save the DOE over \$78,000 in paper costs annually.

[Lexmark printers 6 years and younger all have duplex capability. The following duplex initiatives can reduce paper consumption and save money:](#)

- Setting duplex as your default setting on your printer**
- Educating end users about the benefit of duplex printing.**

[For more information on how the DOE is focused on Sustainability check: <http://schools.nyc.gov/community/facilities/sustainability/about/>](#)

Actions you can take to Save your School Money

- Use highest yield toner whenever possible to lower the cost per page.
- Consider replacing printers over 6 years old to optimize eco-friendly printer environment.
- Duplex multiple page documents when possible to reduce paper usage.

Printer details

Model	Serial Number	Age in Years	Utilization	ATS Printer	Avg Mono Pages	Avg Color Pages	Avg Monthly Volume
C534n	941DFGM	10	1%		23	14	37

CS510DE	502745946GP5F	3				
CS510DE	502706946HRFG	3	1%	82	4	86
CS622DE	50298190405TX	1				
E460dn	72HFZC6	9				
E460dn	72HP2B9	8				
E460dn	72HP29R	8	1%	83		83
E460dn	72HP2B4	7				
E460dn	72HP1W8	8				
E460dn	72HP2B5	8	9%	851		851
E460dn	72HP2B8	8				
E460dw	72HPM8V	8				
MS510dn	451444HH1LG1B	5	2%	241		241
MS510dn	451444HH1LG1L	5	6%	829		829
MS510dn	451444HH1LG13	5	3%	458		458
MS510DN	45147GHH42ZB8	2				
MS510DN	45147GHH3RDT5	3				
MS510DN	45146PHH39KVZ	3				
MS510DN	45147GHH42Z8R	2	4%	555		555
MS510DN	45147GHH42ZBD	2	5%	640		640
MS510DN	45146PHH39NGF	3				
MS510DN	45147GHH4806Z	2				
MS510dn	451433HH119G9	6				
MS510dn	45145PHH2N5MP	4	9%	1228		1228
MS510dn	45145PHH2N5N8	4	8%	1058		1058
MS510dn	45145PHH2N5N6	4	7%	924		924
MS510dn	45145PHH2N5MZ	4	8%	1126		1126
MS510dn	451445HH212HG	5	2%	264		264
MS510dn	45145PHH2N5NB	4	6%	860		860
MS510dn	451445HH212HM	5				
MS510dn	451445HH212HV	5	0%	14		14
MS510dn	45145PHH2N5N0	4				
MS510DN	45147GHH3RDTG	3				
MS510dn	45145PHH2N5MY	4	8%	1077		1077
MS510DN	45146PHH37170	3	7%	978		978
MS510dn	451430HH06XVT	7	0%	13		13
MS510dn	451433HH119G1	6	16%	2177		2177
MS510dn	451445HH212GC	5				
MS510dn	451445HH212GV	5				
MS510dn	45145PHH2N5M8	4	1%	142		142
MS510dn	451420HH0564T	7	3%	358		358
MS510DN	45146PHH39NG8	3				
MS510DN	45147GHH3RDTF	3				
MS621DN	460081400260G	1				
MS621DN	4600814002610	1				
MS621DN	4600814002615	1				
MS621DN	460093531141G	0				
MS621DN	46009333107YP	0				
MS810	451445HH212HB	5				
MS810	502704946D1V2	4				
MS810de	40635C660348K	4	15%	2935		2935
MS810de	40635C6603484	4	11%	2207		2207
MS810de	40635C660348M	4	19%	3705	Yes	3705
MS810DE	40636C6604LCF	3	3%	662		662
MX511dhe	701520HH004R6	7	11%	1317	Yes	1317
MX711dhe	74635C6602WL2	4	6%	1602	Yes	1602
MX711dhe	74635C6602WKH	4	8%	2099	Yes	2099
T630n	9925BK6	12	0%	1		1
T640n	792X3XV	11				
T640n	792X3XZ	11	3%	353		353
T640n	791CRML	13				
T650n	793YYG2	10				
T650n	793YYBM	10	8%	1677		1677

<< End of Data >>

10X205 - Jan 2020 - Page 3

For more information regarding this snapshot, please contact your Lexmark team

Lexmark Team

CDW Team
CDW Sales Department – 800-705-4239

Title	Name	E-Mail	Phone
Client Executive	Mindy Maher	mmaher@lexmark.com	212-880-2837
Site Operations	Mark Ennis	mennis@lexmark.com	908-210-3030
Systems Engineer	TBD	TBD	TBD

Title	Name	E-Mail	Phone
Sales Manager	John Skidmore	john.skidmore@cdwg.com	(866) 687-3187
Sales Operations	Jon Gray	jongray@cdw.com	(203) 851-7133
		NYCDOE@cdwg.com	