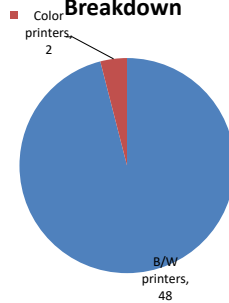


Please find enclosed a snap shot of your school's printer environment. The printer breakdown and data encompasses only the printers we can see on your network. You may have additional printers that are locally connected (e.g. USB attached), but those are not included in this breakdown.

Chart 1 – School Printer Breakdown

This provides your school's enrollment, along with the number of printers, including the distribution between B/W and color printers.

Color/Mono Device Breakdown



International School For Liberal Arts

Enrollment	512
B/W printers	48
Color printers	2
Total printers	50

From the list provided on page 3 are all of your printers represented? If not, how many are missing Providing Lexmark the asset data that is missing will allow us to give you a more accurate picture of your printer environment.

Do you know how many printers you have in your main office, compared to the number of people who sit in the main office?

Reducing the number of devices and using the most efficient models in the right locations can help your school save money.

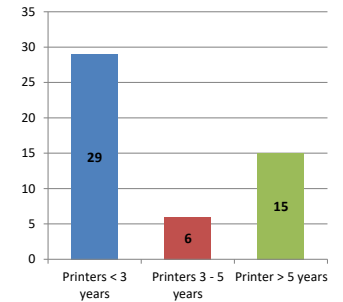
Chart 2 – Printer Age Statistics

Here we show the average age of your printers and show the distribution among 3 age categories; under 3 years old, 3-5 years old and over 5 years old.

Printer Age Statistics

Average Age (years)	4
Printers < 3 years	29
Printers 3 - 5 years	6
Printer > 5 years	15

Printer Age Statistics



The age of your printer fleet plays a large role in your annual printer maintenance and toner cost. The DOE only supports printers 6 years and younger.

Once the warranty expires and the age of your device exceeds 6 years, maintenance and repairs become very costly.

New printers have higher toner yields than older printers, resulting in lower cost per page which saves money.

Newer printers are Energy Star compliant and have advanced eco settings which help reduce energy usage and saves money.

Glossary

B/W - Black and White Printing Only

Color - Color or Black and White Printing

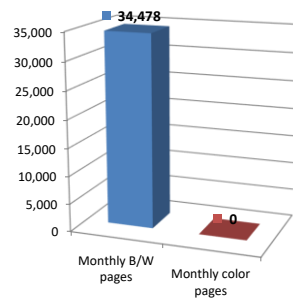
Duplex - Printing on both sides of the paper.

Simplex - Single Sided Printing

Chart 3 – Volume of Pages Printed

This provides your printed page volumes for the previous month for both B/W and color print jobs. In addition, a utilization percentage is calculated by comparing your print volume for each printer to the maximum monthly volume capacity for that printer model.

Color/Mono Pages Printed



Volume of pages printed

Monthly B/W pages	34,478
Monthly color pages	0
Total monthly pages	34,478
Color page %	0%
Utilization %	3%

[Do you know if all of your printers are being used and how much?](#)

Knowing where volumes are created helps identify areas for consolidation and helps you select the most efficient printers for replacement.

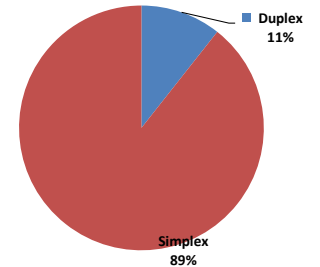
[Are you printing a large amount of color volume?](#)

Controlling color volume, which typically costs more than black and white, can help your school save money.

Chart 4 – Duplex Breakdown

This section shows the percentage of duplexed (double-sided) pages printed along with your duplex opportunity. Duplex opportunity is the total number of pages that could be printed duplex and does not include single page documents. Keep in mind, only the newer printers report duplex statistics. The duplex opportunity shows the prior month's print volume, from the printers with duplex statistics, that could have been duplexed.

Duplex Vs. Simplex



Duplex breakdown

Duplex opportunity	11,337
Duplex	11%

[Did you know that your printers are able to print on both back and front of the page?](#)

Increasing your school's use of double sided printing helps reduce your environmental impact and will help your school save money.

[The average duplex rate for the NYC DOE is 14%](#)

A modest improvement in duplex of 10% would reduce the carbon footprint by over 435,000 pounds of CO₂ per year, and save the DOE over \$78,000 in paper costs annually.

[Lexmark printers 6 years and younger all have duplex capability. The following duplex initiatives can reduce paper consumption and save money:](#)

Setting duplex as your default setting on your printer

Educating end users about the benefit of duplex printing.

[For more information on how the DOE is focused on Sustainability check:](#)

<http://schools.nyc.gov/community/facilities/sustainability/about/>

Actions you can take to Save your School Money

- Use highest yield toner whenever possible to lower the cost per page.
- Consider replacing printers over 6 years old to optimize eco-friendly printer environment.
- Duplex multiple page documents when possible to reduce paper usage.

Printer details

Model	Serial Number	Age in Years	Utilization	ATS Printer	Avg Mono Pages	Avg Color Pages	Avg Monthly Volume
CSS10DE	502711946DD7N	4					

CS510DE	502739945R218	2				
E352dn	622WTFZ	12				
E460dw	72HGYC8	9	11%		1066	1066
E460dw	72HGYC9	9				
E460dw	72HWNZH	4				
E460dw	72HWP28	8				
E460dw	72HGYBR	9				
E460dw	72HGYC2	9				
MS621DN	4600820004MVK	1				
MS621DN	4600820004MVN	1				
MS621DN	4600820004MW0	1	8%		1625	1625
MS621DN	460083700D8MW	1				
MS621DN	460083700D8MX	1				
MS621DN	460083700D8MY	1				
MS621DN	460083700D8MZ	1				
MS621DN	460083700D8N0	1				
MS621DN	460083700D8N6	1				
MS621DN	460083700D8N7	1				
MS621DN	460090530NFFC	1				
MS621DN	460093531141B	0				
MS621DN	460093531141C	0				
MS621DN	460093531147P	0				
MS621DN	460093531147Z	0				
MS621DN	4600935311485	0				
MS621DN	4600935311487	0				
MS621DN	4600942313T2B	0				
MS621DN	4600942313T2C	0				
MS621DN	4600942313T2D	0				
MS621DN	4600942313T23	0				
MS621DN	4600942313T25	0				
MS621DN	4600942313T26	0				
MS621DN	4600942313T27	0				
MS621DN	4600942313T28	0				
MS621DN	4600942313T29	0				
MS810	45146PHH32HZ5	4	1%		579	579
MS810	45145PHH2H9Z0	4	3%		2137	2137
MS810de	4063369908VNF	6	2%	Yes	443	443
MS810DE	40637D6606V7Y	2	83%		16672	16672
MX711dhe	74635C6600C0Z	4	28%	Yes	6905	6905
MX711DHE	74635C6602DZC	4	8%	Yes	2109	2109
MX722ADHE	746493102255P	0	1%		1476	1476
T650n	795GNBW	7				
T650n	7930PNT	11	1%	Yes	133	133
T650n	79416HW	9		Yes		
T650n	794M346	9	4%	Yes	742	742
T650n	79416HY	10				
T650n	79416GM	10	3%		591	591
T650n	79416FC	10				
T650n	79416BF	10				

<< End of Data >>

For more information regarding this snapshot, please contact your Lexmark team

Lexmark Team

CDW Team
CDW Sales Department – 800-705-4239

Title	Name	E-Mail	Phone
Client Executive	Mindy Maher	mmaher@lexmark.com	212-880-2837
Site Operations	Mark Ennis	mennis@lexmark.com	908-210-3030
Systems Engineer	TBD	TBD	TBD

Title	Name	E-Mail	Phone
Sales Manager	John Skidmore	john.skidmore@cdwg.com	(866) 687-3187
Sales Operations	Jon Gray	jongray@cdw.com	(203) 851-7133
		NYCDOE@cdwg.com	