

Please find enclosed a snap shot of your school's printer environment. The printer breakdown and data encompasses only the printers we can see on your network. You may have additional printers that are locally connected (e.g. USB attached), but those are not included in this breakdown.

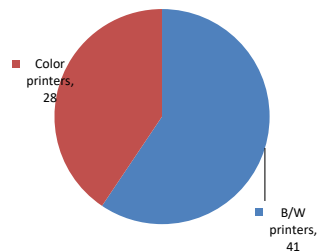
**Chart 1 – School Printer Breakdown**

This provides your school's enrollment, along with the number of printers, including the distribution between B/W and color printers.

**School For Environmental Citizenship**

Enrollment	576
B/W printers	41
Color printers	28
Total printers	69

**Color/Mono Device Breakdown**



From the list provided on page 3 are all of your printers represented? If not, how many are missing Providing Lexmark the asset data that is missing will allow us to give you a more accurate picture of your printer environment.

Do you know how many printers you have in your main office, compared to the number of people who sit in the main office? Reducing the number of devices and using the most efficient models in the right locations can help your school save money.

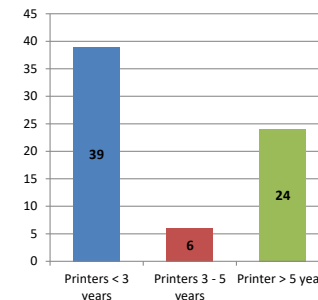
**Chart 2 – Printer Age Statistics**

Here we show the average age of your printers and show the distribution among 3 age categories; under 3 years old, 3-5 years old and over 5 years old.

**Printer Age Statistics**

Average Age (years)	4
Printers < 3 years	39
Printers 3 - 5 years	6
Printer > 5 years	24

**Printer Age Statistics**



The age of your printer fleet plays a large role in your annual printer maintenance and toner cost. The DOE only supports printers 6 years and younger.

Once the warranty expires and the age of your device exceeds 6 years, maintenance and repairs become very costly.

New printers have higher toner yields than older printers, resulting in lower cost per page which saves money.

Newer printers are Energy Star compliant and have advanced eco settings which help reduce energy usage and saves money.

**Glossary**

B/W - Black and White Printing Only

Color - Color or Black and White Printing

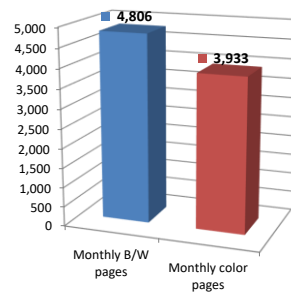
Duplex - Printing on both sides of the paper.

Simplex - Single Sided Printing

### Chart 3 – Volume of Pages Printed

This provides your printed page volumes for the previous month for both B/W and color print jobs. In addition, a utilization percentage is calculated by comparing your print volume for each printer to the maximum monthly volume capacity for that printer model.

Color/Mono Pages Printed



**Volume of pages printed**

Monthly B/W pages	4,806
Monthly color pages	3,933
Total monthly pages	8,739
Color page %	45%
Utilization %	1%

[Do you know if all of your printers are being used and how much?](#)

**Knowing where volumes are created helps identify areas for consolidation and helps you select the most efficient printers for replacement.**

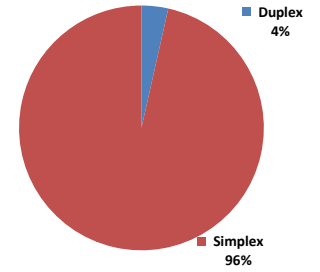
[Are you printing a large amount of color volume?](#)

**Controlling color volume, which typically costs more than black and white, can help your school save money.**

### Chart 4 – Duplex Breakdown

This section shows the percentage of duplexed (double-sided) pages printed along with your duplex opportunity. Duplex opportunity is the total number of pages that could be printed duplex and does not include single page documents. Keep in mind, only the newer printers report duplex statistics. The duplex opportunity shows the prior month's print volume, from the printers with duplex statistics, that could have been duplexed.

Duplex Vs. Simplex



**Duplex breakdown**

Duplex opportunity	3,922
Duplex	4%

[Did you know that your printers are able to print on both back and front of the page?](#)

**Increasing your school's use of double sided printing helps reduce your environmental impact and will help your school save money.**

[The average duplex rate for the NYC DOE is 14%](#)

**A modest improvement in duplex of 10% would reduce the carbon footprint by over 435,000 pounds of CO<sub>2</sub> per year, and save the DOE over \$78,000 in paper costs annually.**

[Lexmark printers 6 years and younger all have duplex capability. The following duplex initiatives can reduce paper consumption and save money:](#)

- Setting duplex as your default setting on your printer**
- Educating end users about the benefit of duplex printing.**

[For more information on how the DOE is focused on Sustainability check: <http://schools.nyc.gov/community/facilities/sustainability/about/>](#)

## Actions you can take to Save your School Money

- Use highest yield toner whenever possible to lower the cost per page.
- Consider replacing printers over 6 years old to optimize eco-friendly printer environment.
- Duplex multiple page documents when possible to reduce paper usage.

**Printer details**

Model	Serial Number	Age in Years	Utilization	ATS Printer	Avg Mono Pages	Avg Color Pages	Avg Monthly Volume
CS510de	5027049464R74	6					

CS510DE	502747946GRMD	3	2%	19	108	127	
CS510DE	502743945GKVC	3	6%	208	203	411	
CS510DE	502724945MNRG	2	2%	36	80	116	
CS510DE	502724945MNRK	2					
CS622DE	5029829040FP7	1					
CS622DE	5029829040FKN	1	7%	409	299	708	
CS622DE	5029908041LCT	1					
CS622DE	5029908041LDG	1					
CS622DE	5029908041LDX	1	0%	2	15	17	
CS622DE	5029908041LFX	1	3%	266		266	
CS622DE	5029908041LHH	1	0%	1	20	21	
CS622DE	5029908041LHW	1					
CS622DE	5029908041LHY	1					
CS622DE	5029908041LHZ	1					
CS622DE	5029908041LH3	1	0%	17	25	42	
CS622DE	5029908041LH6	1	1%	55	52	107	
CS622DE	5029908041LH9	1					
CS622DE	5029908041LK0	1	4%	247	182	429	
CX510DE	752728946N17C	2	10%	195	481	676	
CX510de	7527109460MPC	6	6%	Yes	114	295	409
CX510de	7527439463BMW	6	3%	Yes	70	118	188
CX510de	7527179461519	4					
CX622ADE	7529838140ZH5	1	0%	3	9	12	
CX725DHE	7528706010Y8N	2					
CX725DHE	7528732011HX1	2					
CX725DHE	75289200F3ZFY	0	21%	2128	2046	4174	
E460dw	72HP3MV	8					
E460dw	72HPMBL	8					
E460dw	72HP3TC	8					
E460dw	72HP48Z	8					
E460dw	72HP3Z7	8					
E460dw	72HPMCH	8					
E460dw	72HPMCG	8					
E460dw	72HPM8T	8					
E460dw	72HPM9P	8					
E460dw	72HPMP0	8					
E460dw	72HPM30	8					
E460dw	72HPMB6	8					
E460dw	72HGY90	9					
E460dw	72HPM9B	8					
E460dw	72HPM9R	8					
E460dw	72HP3L5	8					
E460dw	72HP3Z9	8					
E460dw	72HPMP3	8					
E460dw	72HPM99	8					
MS510dn	451457HH2H035	4					
MS510dn	451432HH0TFMN	6					
MS510DN	45146PHH371DP	3					
MS510dn	451432HH0XZRZ	6					
MS621DN	460085100L6L9	1					
MS621DN	460085100L6RL	1					
MS621DN	460085100L6RP	1					
MS621DN	460085100L6RW	1	3%	568		568	
MS621DN	460090430N2TN	1					
MS621DN	460090430N2TO	1					
MS621DN	460090530NFF4	1					
MS621DN	460090530NFLC	1					
MS621DN	460090530NFLD	1	2%	468		468	
MS621DN	460090530NFLM	1					
MS621DN	460090530NFX	1					
MS621DN	460090530NFNY	1					
MS621DN	460090530NFP6	1					
MS621DN	460092430XC5H	1					
MS621DN	460092430XC7Y	1					

<< More data continued on Next Page >>

10X386 - Jan 2020 - Page 3

### Printer Details - Page 2

Model	Serial Number	Age in Years	Utilization	ATS Printer	Avg Mono Pages	Avg Color Pages	Avg Monthly Volume
MS621DN	460092430XC73	1					
MS621DN	460092430XC8B	1					
MS621DN	460092430XC96	1					
X748de	752602944236Y	5		Yes			

