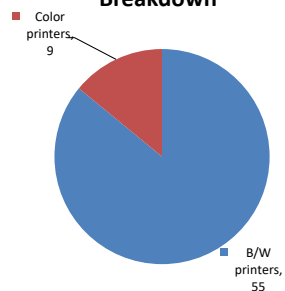


Please find enclosed a snap shot of your school's printer environment. The printer breakdown and data encompasses only the printers we can see on your network. You may have additional printers that are locally connected (e.g. USB attached), but those are not included in this breakdown.

Chart 1 – School Printer Breakdown

This provides your school's enrollment, along with the number of printers, including the distribution between B/W and color printers.

Color/Mono Device Breakdown



P.S. 153 Helen Keller

Enrollment	612
B/W printers	55
Color printers	9
Total printers	64

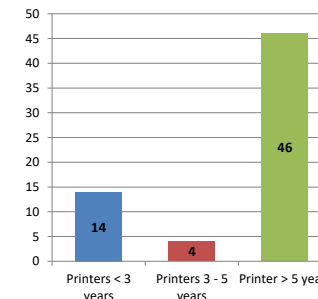
From the list provided on page 3 are all of your printers represented? If not, how many are missing Providing Lexmark the asset data that is missing will allow us to give you a more accurate picture of your printer environment.

Do you know how many printers you have in your main office, compared to the number of people who sit in the main office? Reducing the number of devices and using the most efficient models in the right locations can help your school save money.

Chart 2 – Printer Age Statistics

Here we show the average age of your printers and show the distribution among 3 age categories; under 3 years old, 3-5 years old and over 5 years old.

Printer Age Statistics



Printer Age Statistics

Average Age (years)	6
Printers < 3 years	14
Printers 3 - 5 years	4
Printer > 5 years	46

The age of your printer fleet plays a large role in your annual printer maintenance and toner cost. The DOE only supports printers 6 years and younger.

Once the warranty expires and the age of your device exceeds 6 years, maintenance and repairs become very costly.

New printers have higher toner yields than older printers, resulting in lower cost per page which saves money.

Newer printers are Energy Star compliant and have advanced eco settings which help reduce energy usage and saves money.

Glossary

B/W - Black and White Printing Only

Color - Color or Black and White Printing

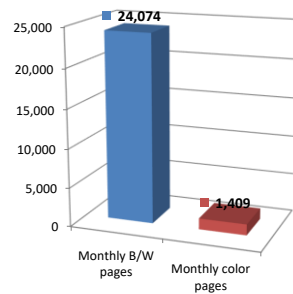
Duplex - Printing on both sides of the paper.

Simplex - Single Sided Printing

Chart 3 – Volume of Pages Printed

This provides your printed page volumes for the previous month for both B/W and color print jobs. In addition, a utilization percentage is calculated by comparing your print volume for each printer to the maximum monthly volume capacity for that printer model.

Color/Mono Pages Printed



Volume of pages printed

Monthly B/W pages	24,074
Monthly color pages	1,409
Total monthly pages	25,483
Color page %	6%
Utilization %	2%

Do you know if all of your printers are being used and how much?

Knowing where volumes are created helps identify areas for consolidation and helps you select the most efficient printers for replacement.

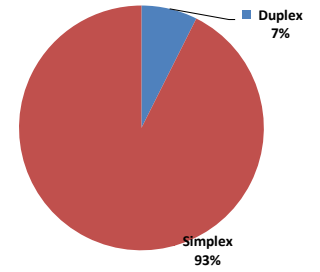
Are you printing a large amount of color volume?

Controlling color volume, which typically costs more than black and white, can help your school save money.

Chart 4 – Duplex Breakdown

This section shows the percentage of duplexed (double-sided) pages printed along with your duplex opportunity. Duplex opportunity is the total number of pages that could be printed duplex and does not include single page documents. Keep in mind, only the newer printers report duplex statistics. The duplex opportunity shows the prior month's print volume, from the printers with duplex statistics, that could have been duplexed.

Duplex Vs. Simplex



Duplex breakdown

Duplex opportunity	26,339
Duplex	7%

Did you know that your printers are able to print on both back and front of the page?

Increasing your school's use of double sided printing helps reduce your environmental impact and will help your school save money.

The average duplex rate for the NYC DOE is 14%

A modest improvement in duplex of 10% would reduce the carbon footprint by over 435,000 pounds of CO₂ per year, and save the DOE over \$78,000 in paper costs annually.

Lexmark printers 6 years and younger all have duplex capability. The following duplex initiatives can reduce paper consumption and save money:

Setting duplex as your default setting on your printer

Educating end users about the benefit of duplex printing.

For more information on how the DOE is focused on Sustainability check:

<http://schools.nyc.gov/community/facilities/sustainability/about/>

Actions you can take to Save your School Money

- Use highest yield toner whenever possible to lower the cost per page.
- Consider replacing printers over 6 years old to optimize eco-friendly printer environment.
- Duplex multiple page documents when possible to reduce paper usage.

Printer details

Model	Serial Number	Age in Years	Utilization	ATS Printer	Avg Mono Pages	Avg Color Pages	Avg Monthly Volume
C544dw	94598G6	8					

C736dn	94471CX	8				
CS510de	50273894577P3	5	8%	314	264	578
CS510de	502726946BTPM	4	3%	150	84	234
CS622DE	502981804053X	1	3%	87	196	283
CX510de	7527059467HVT	5				
CX510de	7527039463XBD	6				
CX510de	7527039463XB8	6	17%	318	865	1183
CX622ADE	7529827140F29	1				
E352dn	622944V	12				
E352dn	6239K8V	11	3%	203		203
MS510DN	45147GHH3V003	3	6%	820		820
MS510DN	45147GHH3RBZ1	3	6%	803		803
MS510DN	45147GHH3V3T8	3	1%	164		164
MS510DN	45147GHH3RBZK	3	5%	690		690
MS510DN	45147GHH3TZZY	3	3%	395		395
MS510DN	45147GHH3V00H	3	9%	1238		1238
MS510DN	45147GHH3RBZ5	3				
MS510DN	45147GHH3RBZC	3				
MS510DN	45147GHH3TZZZ	3	8%	1121		1121
MS621DN	4600820004MK4	1	2%	467		467
MS810DE	40636C6606PT7	3	0%	32		32
MS810n	40635C6604LW4	4	4%	1828	Yes	1828
MX410DE	70157GLM1F129	3	7%	737		737
MX711dhe	74635C66028TW	4	6%	1413	Yes	1413
T650dn	795C0TN	6				
T650dn	795C0Y4	8				
T650n	795C176	8				
T650n	795C0VP	8	5%	1007		1007
T650n	795C0XN	8				
T650n	794BHL2	9				
T650n	795C0YY	8	2%	424		424
T650n	794BHLG	9	0%	50		50
T650n	795C0L9	8	7%	1461		1461
T650n	795C0Z2	8	4%	899		899
T650n	795C0YT	8				
T650n	795C0Z6	8	4%	894		894
T650n	7954F60	8	2%	319		319
T650n	795C0RN	8	1%	134		134
T650n	795543B	8				
T650n	795542W	8				
T650n	795C0WG	8	4%	899		899
T650n	795543N	8	3%	643		643
T650n	7955LNZ	8	4%	790		790
T650n	795C0Y7	8				
T650n	795C0XY	8	4%	729		729
T650n	795C0Z5	8				
T650n	795C0VX	8				
T650n	795C0PB	8				
T650n	795C0XL	8				
T650n	795C0VG	8				
T650n	795C0PH	8				
T650n	795C0XV	8	4%	870		870
T650n	795C0Z8	8				
T650n	795C0VN	8				
T650n	795C0RK	8	3%	666		666
T650n	795C0P6	8	6%	1141		1141
T650n	795C0PK	8	8%	1581		1581
T650n	795C0Z9	8				
T650n	795C183	8	2%	328		328
T650n	795C0TK	8	2%	459		459
T650n Low Volt	7955438	8				
T650n Low Volt	7955433	8				
T650n Low Volt	7955436	8				

<< End of Data >>

For more information regarding this snapshot, please contact your Lexmark team

Lexmark Team

CDW Team
CDW Sales Department – 800-705-4239

Title	Name	E-Mail	Phone
Client Executive	Mindy Maher	mmaher@lexmark.com	212-880-2837
Site Operations	Mark Ennis	mennis@lexmark.com	908-210-3030
Systems Engineer	TBD	TBD	TBD

Title	Name	E-Mail	Phone
Sales Manager	John Skidmore	john.skidmore@cdwg.com	(866) 687-3187
Sales Operations	Jon Gray	jongray@cdw.com	(203) 851-7133
		NYCDOE@cdwg.com	