

Please find enclosed a snap shot of your school's printer environment. The printer breakdown and data encompasses only the printers we can see on your network. You may have additional printers that are locally connected (e.g. USB attached), but those are not included in this breakdown.

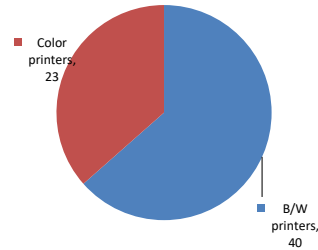
**Chart 1 – School Printer Breakdown**

This provides your school's enrollment, along with the number of printers, including the distribution between B/W and color printers.

**Intermediate School 180**

Enrollment	1042
B/W printers	40
Color printers	23
Total printers	63

**Color/Mono Device Breakdown**



From the list provided on page 3 are all of your printers represented? If not, how many are missing Providing Lexmark the asset data that is missing will allow us to give you a more accurate picture of your printer environment.

Do you know how many printers you have in your main office, compared to the number of people who sit in the main office? Reducing the number of devices and using the most efficient models in the right locations can help your school save money.

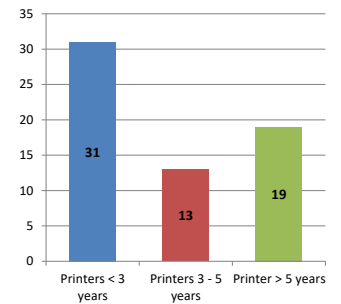
**Chart 2 – Printer Age Statistics**

Here we show the average age of your printers and show the distribution among 3 age categories; under 3 years old, 3-5 years old and over 5 years old.

**Printer Age Statistics**

Average Age (years)	4
Printers < 3 years	31
Printers 3 - 5 years	13
Printer > 5 years	19

**Printer Age Statistics**



The age of your printer fleet plays a large role in your annual printer maintenance and toner cost. The DOE only supports printers 6 years and younger.

Once the warranty expires and the age of your device exceeds 6 years, maintenance and repairs become very costly.

New printers have higher toner yields than older printers, resulting in lower cost per page which saves money.

Newer printers are Energy Star compliant and have advanced eco settings which help reduce energy usage and saves money.

**Glossary**

B/W - Black and White Printing Only

Color - Color or Black and White Printing

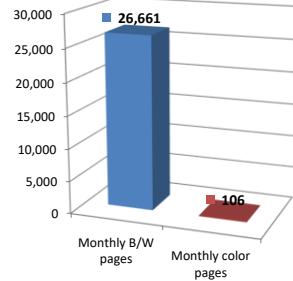
Duplex - Printing on both sides of the paper.

Simplex - Single Sided Printing

### Chart 3 – Volume of Pages Printed

This provides your printed page volumes for the previous month for both B/W and color print jobs. In addition, a utilization percentage is calculated by comparing your print volume for each printer to the maximum monthly volume capacity for that printer model.

Color/Mono Pages Printed



**Volume of pages printed**

Monthly B/W pages	26,661
Monthly color pages	106
Total monthly pages	26,767
Color page %	0%
Utilization %	3%

[Do you know if all of your printers are being used and how much?](#)

**Knowing where volumes are created helps identify areas for consolidation and helps you select the most efficient printers for replacement.**

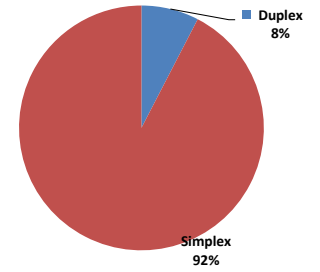
[Are you printing a large amount of color volume?](#)

**Controlling color volume, which typically costs more than black and white, can help your school save money.**

### Chart 4 – Duplex Breakdown

This section shows the percentage of duplexed (double-sided) pages printed along with your duplex opportunity. Duplex opportunity is the total number of pages that could be printed duplex and does not include single page documents. Keep in mind, only the newer printers report duplex statistics. The duplex opportunity shows the prior month's print volume, from the printers with duplex statistics, that could have been duplexed.

Duplex Vs. Simplex



**Duplex breakdown**

Duplex opportunity	6,255
Duplex	8%

[Did you know that your printers are able to print on both back and front of the page?](#)

**Increasing your school's use of double sided printing helps reduce your environmental impact and will help your school save money.**

[The average duplex rate for the NYC DOE is 14%](#)

**A modest improvement in duplex of 10% would reduce the carbon footprint by over 435,000 pounds of CO<sub>2</sub> per year, and save the DOE over \$78,000 in paper costs annually.**

[Lexmark printers 6 years and younger all have duplex capability. The following duplex initiatives can reduce paper consumption and save money:](#)

**Setting duplex as your default setting on your printer**

**Educating end users about the benefit of duplex printing.**

[For more information on how the DOE is focused on Sustainability check:](#)

<http://schools.nyc.gov/community/facilities/sustainability/about/>

## Actions you can take to Save your School Money

- Use highest yield toner whenever possible to lower the cost per page.
- Consider replacing printers over 6 years old to optimize eco-friendly printer environment.
- Duplex multiple page documents when possible to reduce paper usage.

**Printer details**

Model	Serial Number	Age in Years	Utilization	ATS Printer	Avg Mono Pages	Avg Color Pages	Avg Monthly Volume
CSS10DE	502735945PC98	2					

CS725DE	50289190F3XF8	0			
CS725DE	50289190F3XGM	0			
CS725DE	50289190F3XGN	0			
CS725DE	50289190F3XWY	0			
CS725DE	50289190F3XXV	0			
CS725DE	50289190F3XYD	0			
CS725DE	50289190F3XYW	0			
CS725DE	50289190F3XY8	0			
CS725DE	50289210F3Z2B	0			
CS725DE	50289210F3Z34	0			
CX510DE	752732946NH9P	2			
CX510DE	752747946RDDT	2	1%		100
CX510DE	752747946RDDN	2	2%	102	108
CX510DE	752740946FMMZ	3			6
CX510DE	752734946F44C	3			
CX510DE	752740946FMN0	3			
CX510DE	752741946FT28	3			
CX510DE	752723946MCMZ	2			
CX510DE	752736946P2XB	2			
CX622ADE	7529845141B4P	1			
CX622ADE	7529845141B40	1			
MS510dn	451445HH1YFGK	5	0%	48	48
MS510dn	451420HH0466L	7	18%	2486	2486
MS510dn	451445HH212C5	4			
MS510dn	451420HH04661	7			
MS510dn	451420HH0466D	7			
MS510dn	451445HH1YFGZ	5			
MS510dn	451445HH1YFGT	5	64%	8991	8991
MS510dn	451420HH0462P	7	3%	374	374
MS510dn	451445HH212C2	5			
MS510dn	451445HH212C1	5			
MS510dn	451445HH1YFGD	5			
MS510dn	451455HH25TM5	5	2%	226	226
MS510dn	451445HH1YFGY	5	2%	282	282
MS510dn	451420HH04668	7	4%	618	618
MS510dn	451445HH212BZ	4			
MS510DN	45147GHH45RKZ	2	29%	4109	4109
MS510DN	45147GHH45RKY	2			
MS510DN	45147GHH45RLD	2	7%	990	990
MS510dn	451445HH212BL	5	3%	405	405
MS510DN	45147GHH45RL4	2			
MS510DN	45147GHH45RL5	2			
MS510dn	451445HH212BX	5	7%	958	958
MS510DN	45146PHH3DGYC	3			
MS510DN	45147GHH45RL3	2			
MS510dn	451445HH1YFG6	5	1%	156	156
MS510dn	451445HH212BT	5	7%	941	941
MS510DN	45147GHH45RKX	2			
MS510DN	45147GHH45RL8	2	0%	33	33
MS510DN	45147GHH4HNG7	2			
MS810	45146PHH2YMDG	4			
MS810	45146PHH2YMDH	4			
MS810DE	40638D6600BPK	2			
MX410DE	70157GLM1F0F4	2	15%	1519	1519
MX410DE	70157GLM1F123	2			
MX410DE	70157GLM1L5Z2	2			
MX711dhe	74634C660108W	5	12%	3049	3049
T630n	991FDBL	16	5%	754	754
T630n	991FCKT	16	4%	620	620
T650dn	7940M00	4			
T650dn	7940LZY	4			
X734de	943215Z	10			

<< End of Data >>

11X180 - Jan 2020 - Page 3

For more information regarding this snapshot, please contact your Lexmark team

Lexmark Team

CDW Team  
CDW Sales Department – 800-705-4239

Title	Name	E-Mail	Phone
Client Executive	Mindy Maher	<a href="mailto:mmaher@lexmark.com">mmaher@lexmark.com</a>	212-880-2837
Site Operations	Mark Ennis	<a href="mailto:mennis@lexmark.com">mennis@lexmark.com</a>	908-210-3030
Systems Engineer	TBD	TBD	TBD

Title	Name	E-Mail	Phone
Sales Manager	John Skidmore	<a href="mailto:john.skidmore@cdwg.com">john.skidmore@cdwg.com</a>	(866) 687-3187
Sales Operations	Jon Gray	<a href="mailto:jongray@cdw.com">jongray@cdw.com</a>	(203) 851-7133
		<a href="mailto:NYCDOE@cdwg.com">NYCDOE@cdwg.com</a>	