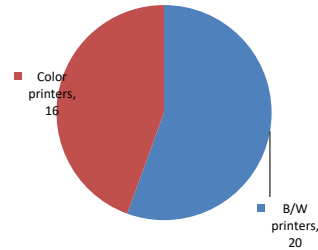


Please find enclosed a snap shot of your school's printer environment. The printer breakdown and data encompasses only the printers we can see on your network. You may have additional printers that are locally connected (e.g. USB attached), but those are not included in this breakdown.

Chart 1 – School Printer Breakdown

This provides your school's enrollment, along with the number of printers, including the distribution between B/W and color printers.

Color/Mono Device Breakdown



P.S. 006 West Farms

Enrollment	528
B/W printers	20
Color printers	16
Total printers	36

From the list provided on page 3 are all of your printers represented? If not, how many are missing Providing Lexmark the asset data that is missing will allow us to give you a more accurate picture of your printer environment.

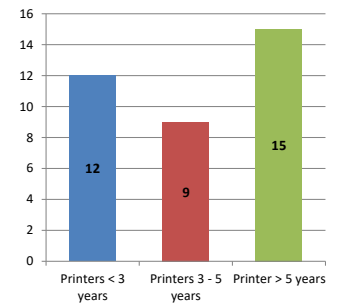
Do you know how many printers you have in your main office, compared to the number of people who sit in the main office?

Reducing the number of devices and using the most efficient models in the right locations can help your school save money.

Chart 2 – Printer Age Statistics

Here we show the average age of your printers and show the distribution among 3 age categories; under 3 years old, 3-5 years old and over 5 years old.

Printer Age Statistics



Printer Age Statistics

Average Age (years)	4
Printers < 3 years	12
Printers 3 - 5 years	9
Printer > 5 years	15

The age of your printer fleet plays a large role in your annual printer maintenance and toner cost. The DOE only supports printers 6 years and younger.

Once the warranty expires and the age of your device exceeds 6 years, maintenance and repairs become very costly.

New printers have higher toner yields than older printers, resulting in lower cost per page which saves money.

Newer printers are Energy Star compliant and have advanced eco settings which help reduce energy usage and saves money.

Glossary

B/W - Black and White Printing Only

Color - Color or Black and White Printing

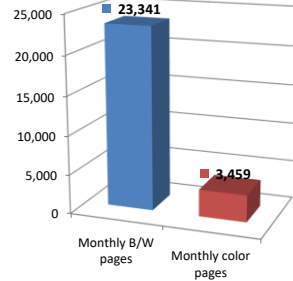
Duplex - Printing on both sides of the paper.

Simplex - Single Sided Printing

Chart 3 – Volume of Pages Printed

This provides your printed page volumes for the previous month for both B/W and color print jobs. In addition, a utilization percentage is calculated by comparing your print volume for each printer to the maximum monthly volume capacity for that printer model.

Color/Mono Pages Printed



Volume of pages printed

Monthly B/W pages	23,341
Monthly color pages	3,459
Total monthly pages	26,800
Color page %	13%
Utilization %	5%

[Do you know if all of your printers are being used and how much?](#)

Knowing where volumes are created helps identify areas for consolidation and helps you select the most efficient printers for replacement.

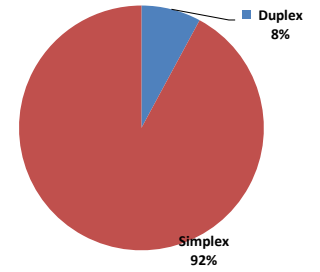
[Are you printing a large amount of color volume?](#)

Controlling color volume, which typically costs more than black and white, can help your school save money.

Chart 4 – Duplex Breakdown

This section shows the percentage of duplexed (double-sided) pages printed along with your duplex opportunity. Duplex opportunity is the total number of pages that could be printed duplex and does not include single page documents. Keep in mind, only the newer printers report duplex statistics. The duplex opportunity shows the prior month's print volume, from the printers with duplex statistics, that could have been duplexed.

Duplex Vs. Simplex



Duplex breakdown

Duplex opportunity	20,911
Duplex	8%

[Did you know that your printers are able to print on both back and front of the page?](#)

Increasing your school's use of double sided printing helps reduce your environmental impact and will help your school save money.

[The average duplex rate for the NYC DOE is 14%](#)

A modest improvement in duplex of 10% would reduce the carbon footprint by over 435,000 pounds of CO₂ per year, and save the DOE over \$78,000 in paper costs annually.

[Lexmark printers 6 years and younger all have duplex capability. The following duplex initiatives can reduce paper consumption and save money:](#)

Setting duplex as your default setting on your printer

Educating end users about the benefit of duplex printing.

[For more information on how the DOE is focused on Sustainability check:](#)

<http://schools.nyc.gov/community/facilities/sustainability/about/>

Actions you can take to Save your School Money

- Use highest yield toner whenever possible to lower the cost per page.
- Consider replacing printers over 6 years old to optimize eco-friendly printer environment.
- Duplex multiple page documents when possible to reduce paper usage.

Printer details

Model	Serial Number	Age in Years	Utilization	ATS Printer	Avg Mono Pages	Avg Color Pages	Avg Monthly Volume
C544dn	9454XC9	9					

CS510de	5027339466X77	5				
CS510de	5027329456PH6	5	20%	369	1061	1430
CS510de	5027339466X75	5				
CS510de	502743945444Z	6				
CS510de	5027059458Z5C	5		Yes		
CS510de	5027059458Z4H	5	10%	60	614	674
CS622DE	502981304018T	1				
CS725DE	50288490F3GZB	1				
CS725DE	50289050F3RVC	1				
CS725DE	50289050F3RVK	1	2%	178	138	316
CX510de	75271294681WVG	5	9%	141	464	605
CX725DHE	7528706010YBB	3	14%	2841		2841
CX725DHE	7528706010Y8M	3				
CX725DHE	7528706010Y9D	3				
CX725DHE	75288500F3F4H	1	7%	179	1182	1361
LaserjetP2055	CNB9917018	10				
LaserjetP2055	CNB9N70807	10				
LaserjetP2055	CNB9P91097	10				
MS510dn	451445HH212C6	5	9%	1293		1293
MS510dn	45145PHH2HBL7	4				
MS510dn	45145PHH2N5GM	4				
MS510dn	45145PHH2N5HX	4	33%	4666		4666
MS510dn	451420HH0586H	7				
MS510dn	45145PHH2N5H3	4				
MS510dn	45145PHH2N5FX	4	13%	1773		1773
MS810	451443HH14K59	6				
MS810de	4063369907V0P	6	16%	3107		3107
MS810de	4063369907TYW	6		Yes		
MS822DE	4064912015KB4	0				
MX410de	701532LM05XWR	6				
MX421ADE	7017907308Y2P	1				
MX421ADE	7017845206PDK	0				
MX522ADHE	7017831103XRL	1	6%	939		939
MX711DHE	74636C6601WPY	3	31%	7795	Yes	7795
T650n	793T18T	10				

<< End of Data >>

For more information regarding this snapshot, please contact your Lexmark team

Lexmark Team

CDW Team
CDW Sales Department – 800-705-4239

Title	Name	E-Mail	Phone
Client Executive	Mindy Maher	mmaher@lexmark.com	212-880-2837
Site Operations	Mark Ennis	mennis@lexmark.com	908-210-3030
Systems Engineer	TBD	TBD	TBD

Title	Name	E-Mail	Phone
Sales Manager	John Skidmore	john.skidmore@cdwg.com	(866) 687-3187
Sales Operations	Jon Gray	jongray@cdw.com	(203) 851-7133
		NYCDOE@cdwg.com	