

Please find enclosed a snap shot of your school's printer environment. The printer breakdown and data encompasses only the printers we can see on your network. You may have additional printers that are locally connected (e.g. USB attached), but those are not included in this breakdown.

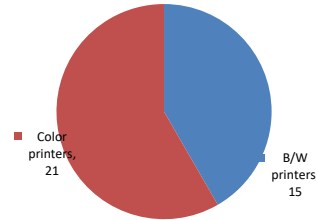
Chart 1 – School Printer Breakdown

This provides your school's enrollment, along with the number of printers, including the distribution between B/W and color printers.

P.S. 061 Francisco Oller

Enrollment	264
B/W printers	15
Color printers	21
Total printers	36

Color/Mono Device Breakdown



From the list provided on page 3 are all of your printers represented? If not, how many are missing Providing Lexmark the asset data that is missing will allow us to give you a more accurate picture of your printer environment.

Do you know how many printers you have in your main office, compared to the number of people who sit in the main office?

Reducing the number of devices and using the most efficient models in the right locations can help your school save money.

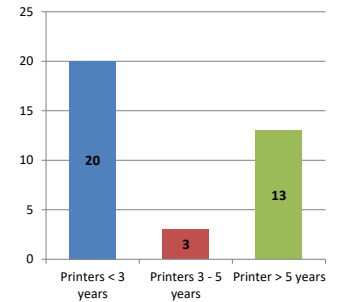
Chart 2 – Printer Age Statistics

Here we show the average age of your printers and show the distribution among 3 age categories; under 3 years old, 3-5 years old and over 5 years old.

Printer Age Statistics

Average Age (years)	5
Printers < 3 years	20
Printers 3 - 5 years	3
Printer > 5 years	13

Printer Age Statistics



The age of your printer fleet plays a large role in your annual printer maintenance and toner cost. The DOE only supports printers 6 years and younger.

Once the warranty expires and the age of your device exceeds 6 years, maintenance and repairs become very costly.

New printers have higher toner yields than older printers, resulting in lower cost per page which saves money.

Newer printers are Energy Star compliant and have advanced eco settings which help reduce energy usage and saves money.

Glossary

B/W - Black and White Printing Only

Color - Color or Black and White Printing

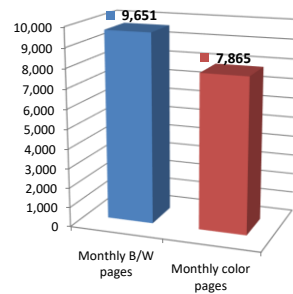
Duplex - Printing on both sides of the paper.

Simplex - Single Sided Printing

Chart 3 – Volume of Pages Printed

This provides your printed page volumes for the previous month for both B/W and color print jobs. In addition, a utilization percentage is calculated by comparing your print volume for each printer to the maximum monthly volume capacity for that printer model.

Color/Mono Pages Printed



Volume of pages printed

Monthly B/W pages	9,651
Monthly color pages	7,865
Total monthly pages	17,516
Color page %	45%
Utilization %	3%

[Do you know if all of your printers are being used and how much?](#)

Knowing where volumes are created helps identify areas for consolidation and helps you select the most efficient printers for replacement.

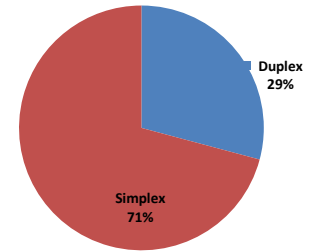
[Are you printing a large amount of color volume?](#)

Controlling color volume, which typically costs more than black and white, can help your school save money.

Chart 4 – Duplex Breakdown

This section shows the percentage of duplexed (double-sided) pages printed along with your duplex opportunity. Duplex opportunity is the total number of pages that could be printed duplex and does not include single page documents. Keep in mind, only the newer printers report duplex statistics. The duplex opportunity shows the prior month's print volume, from the printers with duplex statistics, that could have been duplexed.

Duplex Vs. Simplex



Duplex breakdown

Duplex opportunity	9,681
Duplex	29%

[Did you know that your printers are able to print on both back and front of the page?](#)

Increasing your school's use of double sided printing helps reduce your environmental impact and will help your school save money.

[The average duplex rate for the NYC DOE is 14%](#)

A modest improvement in duplex of 10% would reduce the carbon footprint by over 435,000 pounds of CO₂ per year, and save the DOE over \$78,000 in paper costs annually.

[Lexmark printers 6 years and younger all have duplex capability. The following duplex initiatives can reduce paper consumption and save money:](#)

Setting duplex as your default setting on your printer

Educating end users about the benefit of duplex printing.

[For more information on how the DOE is focused on Sustainability check:](#)

<http://schools.nyc.gov/community/facilities/sustainability/about/>

Actions you can take to Save your School Money

- Use highest yield toner whenever possible to lower the cost per page.
- Consider replacing printers over 6 years old to optimize eco-friendly printer environment.
- Duplex multiple page documents when possible to reduce paper usage.

Printer details

Model	Serial Number	Age in Years	Utilization	ATS Printer	Avg Mono Pages	Avg Color Pages	Avg Monthly Volume
C544dw	9453GRC	9					

CS510DE	502734946FYVP	3				
CS622DE	5029829040G0C	1				
CS725DE	5028651010X19	3	3%		412	165 577
CS725DE	5028811012GNC	2	2%		78	395 473
CS725DE	50288310F300Y	1	9%		937	921 1858
CS725DE	5028703010Z5L	3	5%		183	760 943
CS725DE	5028703010Z7B	3	13%		1090	1485 2575
CS725DE	5028643010PZZ	3				
CS725DE	5028643010R11	3	5%		470	503 973
CS725DE	5028703010Z7M	3	3%		371	197 568
CS725DE	5028703010Z7W	3	4%		270	430 700
CS725DE	5028703010Z8V	3	1%		13	92 105
CS725DE	5028703010Z5D	3	2%	Yes	123	281 404
CS725DE	5028703010Z5G	3				
CS725DE	5028643010R0K	3	2%		96	338 434
CS725DE	5028703010Z5K	3	11%		90	2021 2111
CS725DE	5028703010Z8Z	3				
CS725DE	50288310F301F	1	2%		143	277 420
CS725DE	50289200F3YYV	0				
CX622ADE	7529838140ZGZ	1				
MX410de	701545LM0MZ4W	5	7%	Yes	704	704
MX511de	701556HH0TCVH	4				
MX511dhe	701545HH0MNF6	5	0%		32	32
MX522ADHE	7017904308P82	1	2%		346	346
MX711dhe	74635C6602GC6	4	3%	Yes	655	655
MX711dhe	74634C66010BM	5		Yes		
T640	793074N	11				
T640	790BTKW	12				
T640n	792XLL8	11				
T640n	792V2W1	11				
T640n	792XLLB	11				
T640n	792C9R1	12	3%	Yes	476	476
T650n	795C8CV	7	11%		2109	2109
T650n	795C8D0	7	0%		42	42
X646dte	792HT85	11	3%	Yes	1011	1011

<< End of Data >>

For more information regarding this snapshot, please contact your Lexmark team

Lexmark Team

CDW Team
CDW Sales Department – 800-705-4239

Title	Name	E-Mail	Phone
Client Executive	Mindy Maher	mmaher@lexmark.com	212-880-2837
Site Operations	Mark Ennis	mennis@lexmark.com	908-210-3030
Systems Engineer	TBD	TBD	TBD

Title	Name	E-Mail	Phone
Sales Manager	John Skidmore	john.skidmore@cdwg.com	(866) 687-3187
Sales Operations	Jon Gray	jongray@cdw.com	(203) 851-7133
		NYCDOE@cdwg.com	