

# Lexmark Managed Print Services Monthly Report: 12X195 - P.S. 195, 1250 Ward Avenue, Bronx, NY 10472-2406

Jan 2020

Please find enclosed a snap shot of your school's printer environment. The printer breakdown and data encompasses only the printers we can see on your network. You may have additional printers that are locally connected (e.g. USB attached), but those are not included in this breakdown.

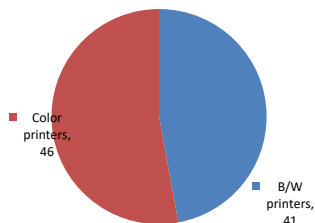
## Chart 1 – School Printer Breakdown

This provides your school's enrollment, along with the number of printers, including the distribution between B/W and color printers.

### P.S. 195

Enrollment	875
B/W printers	41
Color printers	46
Total printers	87

### Color/Mono Device Breakdown



From the list provided on page 3 are all of your printers represented? If not, how many are missing  
Providing Lexmark the asset data that is missing will allow us to give you a more accurate picture of your printer environment.

Do you know how many printers you have in your main office, compared to the number of people who sit in the main office?

Reducing the number of devices and using the most efficient models in the right locations can help your school save money.

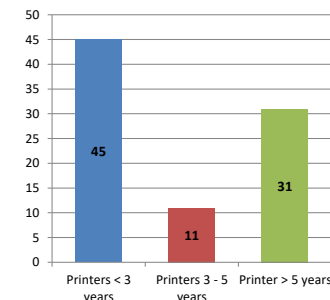
## Chart 2 – Printer Age Statistics

Here we show the average age of your printers and show the distribution among 3 age categories; under 3 years old, 3-5 years old and over 5 years old.

### Printer Age Statistics

Average Age (years)	4
Printers < 3 years	45
Printers 3 - 5 years	11
Printer > 5 years	31

### Printer Age Statistics



The age of your printer fleet plays a large role in your annual printer maintenance and toner cost. The DOE only supports printers 6 years and younger.

Once the warranty expires and the age of your device exceeds 6 years, maintenance and repairs become very costly.

New printers have higher toner yields than older printers, resulting in lower cost per page which saves money.

Newer printers are Energy Star compliant and have advanced eco settings which help reduce energy usage and saves money.

## Glossary

B/W - Black and White Printing Only

Color - Color or Black and White Printing

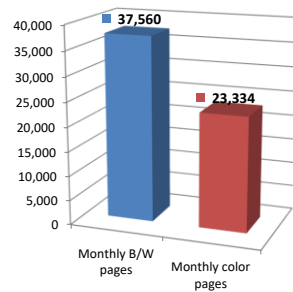
Duplex - Printing on both sides of the paper.

Simplex - Single Sided Printing

### Chart 3 – Volume of Pages Printed

This provides your printed page volumes for the previous month for both B/W and color print jobs. In addition, a utilization percentage is calculated by comparing your print volume for each printer to the maximum monthly volume capacity for that printer model.

Color/Mono Pages Printed



**Volume of pages printed**

Monthly B/W pages	37,560
Monthly color pages	23,334
Total monthly pages	60,894
Color page %	38%
Utilization %	6%

[Do you know if all of your printers are being used and how much?](#)

**Knowing where volumes are created helps identify areas for consolidation and helps you select the most efficient printers for replacement.**

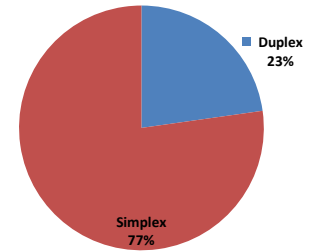
[Are you printing a large amount of color volume?](#)

**Controlling color volume, which typically costs more than black and white, can help your school save money.**

### Chart 4 – Duplex Breakdown

This section shows the percentage of duplexed (double-sided) pages printed along with your duplex opportunity. Duplex opportunity is the total number of pages that could be printed duplex and does not include single page documents. Keep in mind, only the newer printers report duplex statistics. The duplex opportunity shows the prior month's print volume, from the printers with duplex statistics, that could have been duplexed.

Duplex Vs. Simplex



**Duplex breakdown**

Duplex opportunity	40,788
Duplex	23%

[Did you know that your printers are able to print on both back and front of the page?](#)

**Increasing your school's use of double sided printing helps reduce your environmental impact and will help your school save money.**

[The average duplex rate for the NYC DOE is 14%](#)

**A modest improvement in duplex of 10% would reduce the carbon footprint by over 435,000 pounds of CO<sub>2</sub> per year, and save the DOE over \$78,000 in paper costs annually.**

[Lexmark printers 6 years and younger all have duplex capability. The following duplex initiatives can reduce paper consumption and save money:](#)

**Setting duplex as your default setting on your printer**

**Educating end users about the benefit of duplex printing.**

[For more information on how the DOE is focused on Sustainability check:](#)

<http://schools.nyc.gov/community/facilities/sustainability/about/>

## Actions you can take to Save your School Money

- Use highest yield toner whenever possible to lower the cost per page.
- Consider replacing printers over 6 years old to optimize eco-friendly printer environment.
- Duplex multiple page documents when possible to reduce paper usage.

**Printer details**

Model	Serial Number	Age in Years	Utilization	ATS Printer	Avg Mono Pages	Avg Color Pages	Avg Monthly Volume
CSS10DE	502736945PKYR	2					

CS510DE	502748945RXV6	2	10%		340	388	728
CS510DE	502736945PKYW	2	12%		242	599	841
CS510DE	502748945RXTX	2	12%		84	782	866
CS510DE	502706946HRDH	3					
CS510DE	502706946HRCM	3	7%		362	151	513
CS510DE	502706946HRF6	3	28%		1115	870	1985
CS510DE	502748945RXVM	2	13%		410	533	943
CS510DE	502748945RXV8	2	3%		35	159	194
CS510DE	502748945RXVH	2	1%		1	68	69
CS510DE	502746946RR64	2					
CS510DE	502706946HRDY	3	5%		30	297	327
CS510DE	502748945RXV1	2	41%		521	2352	2873
CS510DE	502738945PVXC	2	5%		30	294	324
CS510DE	502748945RXTG	2	15%		426	657	1083
CS510DE	502748945RXT5	2	18%		775	503	1278
CS510DE	502725945MZ61	2	38%		454	2182	2636
CS510DE	502748945RXRR	2	38%		309	2339	2648
CS510DE	502706946HRF4	3	39%		917	1814	2731
CS510DE	502733945P3BM	2	30%		557	1569	2126
CS510DE	502733945P3BR	2	21%		302	1193	1495
CS510de	502720946B8BM	5	22%	Yes	779	726	1505
CS510DE	502706946HRDP	3					
CS510DE	502732945NWXB	2	6%		73	341	414
CS510DE	502732945NWXR	2	8%		270	309	579
CS510DE	502732945NWXW	2	13%		5	936	941
CS510DE	502732945NWXZ	2					
CS510DE	502746946RR62	2	22%		149	1394	1543
CS510DE	502748945RXV4	2	0%		1	6	7
CS622DE	5029845040Y3B	1					
CS622DE	5029845040Y3G	1	5%		245	240	485
CS622DE	5029845040Y3M	1	7%		280	401	681
CS622DE	5029845040Y3V	1	3%		69	192	261
CX510de	7527309465FT6	5					
CX510DE	752749946RKF2	2	13%		529	406	935
CX510DE	752750946RM43	2	3%		96	90	186
CX510DE	752732946NH6T	2					
CX510DE	752749946RKDW	2	10%		66	619	685
CX510DE	752749946RKDX	2	4%		103	190	293
CX510DE	752749946RKFP	2	2%		7	119	126
CX622ADE	7529838140ZK0	1					
CX622ADE	7529838140ZFY	1	11%		1045	90	1135
CX622ADE	7529838140ZGF	1					
CX622ADE	7529838140ZGG	1					
CX622ADE	7529838140ZGH	1	8%		315	501	816
CX622ADE	75299081427FP	1	0%			24	24
MS510dn	45145PHH2VY4R	4	3%		430		430
MS510dn	451420HH057V0	7	8%		1107		1107
MS510dn	45145PHH2VY42	4					
MS510dn	451420HH05875	7					
MS510dn	451445HH22TX2	5	13%		1757		1757
MS510dn	451420HH05Z3H	7					
MS510dn	451420HH057TX	7					
MS510dn	451420HH057TN	7					
MS510dn	451432HH0XZV8	6					
MS510dn	451432HH0XZVV	5					
MS510dn	451420HH0587M	7					
MS510dn	451420HH05Z9L	7					
MS510dn	451432HH0XZV9	6					
MS510dn	451420HH0587W	7					
MS510dn	451420HH0587L	7	28%		3908		3908
MS510dn	451420HH0587R	7					
MS510dn	451420HH03K3F	7	17%		2347		2347
MS510dn	45145PHH2VY4Y	4	1%		80		80
MS510dn	451420HH05883	7	7%		1038		1038

<< More data continued on Next Page >>

12X195 - Jan 2020 - Page 3

### Printer Details - Page 2

Model	Serial Number	Age in Years	Utilization	ATS Printer	Avg Mono Pages	Avg Color Pages	Avg Monthly Volume
MS510dn	451420HH05Z9C	7	16%		2201		2201
MS510dn	451445HH22TWN	5	7%		931		931
MS510dn	451420HH057VF	7					
MS510dn	451420HH05Z3X	7	14%		1941		1941

