

Please find enclosed a snap shot of your school's printer environment. The printer breakdown and data encompasses only the printers we can see on your network. You may have additional printers that are locally connected (e.g. USB attached), but those are not included in this breakdown.

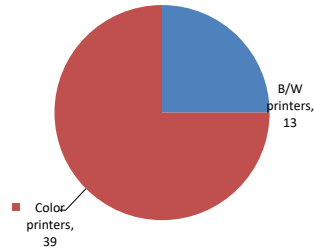
**Chart 1 – School Printer Breakdown**

This provides your school's enrollment, along with the number of printers, including the distribution between B/W and color printers.

**Magnet School Of Math, Science And Design Technolo**

Enrollment	963
B/W printers	13
Color printers	39
Total printers	52

**Color/Mono Device Breakdown**



From the list provided on page 3 are all of your printers represented? If not, how many are missing Providing Lexmark the asset data that is missing will allow us to give you a more accurate picture of your printer environment.

Do you know how many printers you have in your main office, compared to the number of people who sit in the main office? Reducing the number of devices and using the most efficient models in the right locations can help your school save money.

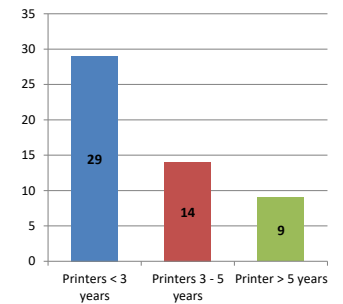
**Chart 2 – Printer Age Statistics**

Here we show the average age of your printers and show the distribution among 3 age categories; under 3 years old, 3-5 years old and over 5 years old.

**Printer Age Statistics**

Average Age (years)	3
Printers < 3 years	29
Printers 3 - 5 years	14
Printer > 5 years	9

**Printer Age Statistics**



The age of your printer fleet plays a large role in your annual printer maintenance and toner cost. The DOE only supports printers 6 years and younger.

Once the warranty expires and the age of your device exceeds 6 years, maintenance and repairs become very costly.

New printers have higher toner yields than older printers, resulting in lower cost per page which saves money.

Newer printers are Energy Star compliant and have advanced eco settings which help reduce energy usage and saves money.

**Glossary**

B/W - Black and White Printing Only

Color - Color or Black and White Printing

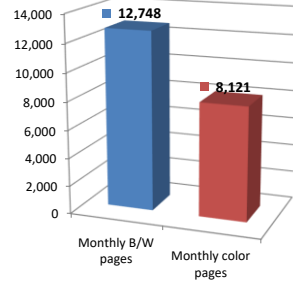
Duplex - Printing on both sides of the paper.

Simplex - Single Sided Printing

### Chart 3 – Volume of Pages Printed

This provides your printed page volumes for the previous month for both B/W and color print jobs. In addition, a utilization percentage is calculated by comparing your print volume for each printer to the maximum monthly volume capacity for that printer model.

Color/Mono Pages Printed



**Volume of pages printed**

Monthly B/W pages	12,748
Monthly color pages	8,121
Total monthly pages	20,869
Color page %	39%
Utilization %	3%

Do you know if all of your printers are being used and how much?

**Knowing where volumes are created helps identify areas for consolidation and helps you select the most efficient printers for replacement.**

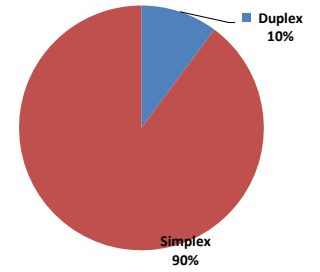
Are you printing a large amount of color volume?

**Controlling color volume, which typically costs more than black and white, can help your school save money.**

### Chart 4 – Duplex Breakdown

This section shows the percentage of duplexed (double-sided) pages printed along with your duplex opportunity. Duplex opportunity is the total number of pages that could be printed duplex and does not include single page documents. Keep in mind, only the newer printers report duplex statistics. The duplex opportunity shows the prior month's print volume, from the printers with duplex statistics, that could have been duplexed.

Duplex Vs. Simplex



**Duplex breakdown**

Duplex opportunity	4,467
Duplex	10%

Did you know that your printers are able to print on both back and front of the page?

**Increasing your school's use of double sided printing helps reduce your environmental impact and will help your school save money.**

The average duplex rate for the NYC DOE is 14%

**A modest improvement in duplex of 10% would reduce the carbon footprint by over 435,000 pounds of CO<sub>2</sub> per year, and save the DOE over \$78,000 in paper costs annually.**

Lexmark printers 6 years and younger all have duplex capability. The following duplex initiatives can reduce paper consumption and save money:

- Setting duplex as your default setting on your printer
- Educating end users about the benefit of duplex printing.

For more information on how the DOE is focused on Sustainability check: <http://schools.nyc.gov/community/facilities/sustainability/about/>

## Actions you can take to Save your School Money

- Use highest yield toner whenever possible to lower the cost per page.
- Consider replacing printers over 6 years old to optimize eco-friendly printer environment.
- Duplex multiple page documents when possible to reduce paper usage.

**Printer details**

Model	Serial Number	Age in Years	Utilization	ATS Printer	Avg Mono Pages	Avg Color Pages	Avg Monthly Volume
C748de	50264694212X3	7					

C748de	5026069424F0W	5	2%		122	97	219
C748de	5026059431BP6	7	8%		290	552	842
C748de	5026449425HZ9	4		Yes			
C748de	5026069424F17	5	10%		239	799	1038
CS510DE	502731946FH6K	3	7%		107	352	459
CS510de	502724946BKVV	4					
CS510de	502724946BKW9	4					
CS510DE	502704946HNVV	3	4%		130	150	280
CS510DE	502704946HNVW	3	3%		41	169	210
CS510DE	502736945PKYD	2	5%		206	151	357
CS510de	5027019458GY4	5					
CS510DE	502736945PKYH	2					
CS510DE	502710945VK4P	1	4%		171	104	275
CS510DE	S502739945R1W2	2					
CS510DE	S502739945R1W9	2					
CS510DE	502710945VK57	1	13%		31	851	882
CS622DE	5029810040075	1					
CS622DE	5029903041BLT	0					
CS622DE	5029903041BM1	0	4%		273	129	402
CS622DE	502992303380T	0	1%		27	110	137
CS622DE	502992303383G	0					
CS622DE	502992303386F	0					
CS622DE	502992303386X	0					
CS622DE	502992303386Y	0					
CS622DE	5029923033872	0					
CS725DE	50287520128BD	1					
CS725DE	5028737011T3M	2					
CS725DE	5028737011T3Z	2					
CS725DE	50289190F3Y1B	0					
CS725DE	50289190F3XYB	0	11%		686	1558	2244
CS725DE	50289190F3XYN	0					
CX510de	7527349469MR5	4					
CX510de	7527349469MWB	4					
CX510DE	752710946TMVB	1	8%		184	376	560
CX510de	752738946309W	6					
CX510DE	752736946P2WY	2	2%		65	86	151
CX725DHE	75288480F3C4F	1	5%		250	657	907
CX725DHE	75288480F3C49	1	19%		1917	1980	3897
E460dn	72HYVRD	8					
MS510DN	451457HH2GK68	3	2%		213		213
MS510DN	45146PHH3B81N	3	1%		76		76
MS510DN	45146PHH371G2	3	2%		247		247
MS510DN	45146PHH371FY	3	2%		243		243
MS610dtn	451432HH0WK23	6	14%		2194		2194
MS810	502731946FH68	3					
MS810de	406336990DTNW	5	10%		1900		1900
MX410DE	S70157GLM1VMLD	2					
MX711DHE	74637C6600M29	2	5%		1184		1184
MX711dhe	7463479906F2K	10	8%		1952		1952
T650dn	793VRGT	9		Yes			
T650n	793T1PV	10					

<< End of Data >>

For more information regarding this snapshot, please contact your Lexmark team

**Lexmark Team**

**CDW Team**  
**CDW Sales Department – 800-705-4239**

Title	Name	E-Mail	Phone
Client Executive	Mindy Maher	<a href="mailto:mmaher@lexmark.com">mmaher@lexmark.com</a>	212-880-2837
Site Operations	Mark Ennis	<a href="mailto:mennis@lexmark.com">mennis@lexmark.com</a>	908-210-3030
Systems Engineer	TBD	TBD	TBD

Title	Name	E-Mail	Phone
Sales Manager	John Skidmore	<a href="mailto:john.skidmore@cdwg.com">john.skidmore@cdwg.com</a>	(866) 687-3187
Sales Operations	Jon Gray	<a href="mailto:jongray@cdw.com">jongray@cdw.com</a>	(203) 851-7133
		<a href="mailto:NYCDOE@cdwg.com">NYCDOE@cdwg.com</a>	