

# Lexmark Managed Print Services Monthly Report: Jan 2020 15K667 - Sunset Park High School, 153 35Th Street, Brooklyn, NY 11232-\_\_\_\_\_

Please find enclosed a snap shot of your school's printer environment. The printer breakdown and data encompasses only the printers we can see on your network. You may have additional printers that are locally connected (e.g. USB attached), but those are not included in this breakdown.

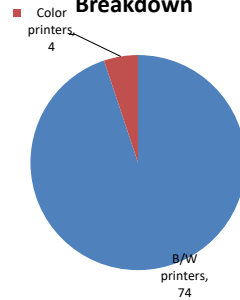
## Chart 1 – School Printer Breakdown

This provides your school's enrollment, along with the number of printers, including the distribution between B/W and color printers.

### Sunset Park High School

Enrollment	1251
B/W printers	74
Color printers	4
Total printers	78

### Color/Mono Device Breakdown



From the list provided on page 3 are all of your printers represented? If not, how many are missing  
 Providing Lexmark the asset data that is missing will allow us to give you a more accurate picture of your printer environment.

Do you know how many printers you have in your main office, compared to the number of people who sit in the main office?  
 Reducing the number of devices and using the most efficient models in the right locations can help your school save money.

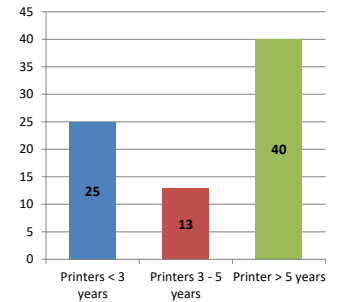
## Chart 2 – Printer Age Statistics

Here we show the average age of your printers and show the distribution among 3 age categories; under 3 years old, 3-5 years old and over 5 years old.

### Printer Age Statistics

Average Age (years)	6
Printers < 3 years	25
Printers 3 - 5 years	13
Printer > 5 years	40

### Printer Age Statistics



The age of your printer fleet plays a large role in your annual printer maintenance and toner cost. The DOE only supports printers 6 years and younger.

Once the warranty expires and the age of your device exceeds 6 years, maintenance and repairs become very costly.

New printers have higher toner yields than older printers, resulting in lower cost per page which saves money.

Newer printers are Energy Star compliant and have advanced eco settings which help reduce energy usage and saves money.

## Glossary

B/W - Black and White Printing Only

Color - Color or Black and White Printing

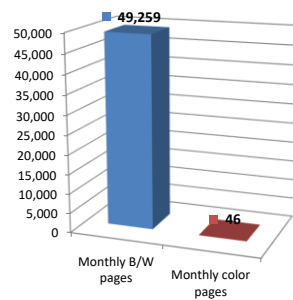
Duplex - Printing on both sides of the paper.

Simplex - Single Sided Printing

### Chart 3 – Volume of Pages Printed

This provides your printed page volumes for the previous month for both B/W and color print jobs. In addition, a utilization percentage is calculated by comparing your print volume for each printer to the maximum monthly volume capacity for that printer model.

Color/Mono Pages Printed



#### Volume of pages printed

Monthly B/W pages	49,259
Monthly color pages	46
Total monthly pages	49,305
Color page %	0%
Utilization %	3%

[Do you know if all of your printers are being used and how much?](#)

**Knowing where volumes are created helps identify areas for consolidation and helps you select the most efficient printers for replacement.**

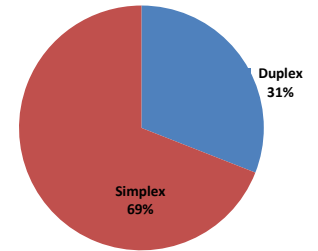
[Are you printing a large amount of color volume?](#)

**Controlling color volume, which typically costs more than black and white, can help your school save money.**

### Chart 4 – Duplex Breakdown

This section shows the percentage of duplexed (double-sided) pages printed along with your duplex opportunity. Duplex opportunity is the total number of pages that could be printed duplex and does not include single page documents. Keep in mind, only the newer printers report duplex statistics. The duplex opportunity shows the prior month's print volume, from the printers with duplex statistics, that could have been duplexed.

Duplex Vs. Simplex



#### Duplex breakdown

Duplex opportunity	7,869
Duplex	31%

[Did you know that your printers are able to print on both back and front of the page?](#)

**Increasing your school's use of double sided printing helps reduce your environmental impact and will help your school save money.**

[The average duplex rate for the NYC DOE is 14%](#)

**A modest improvement in duplex of 10% would reduce the carbon footprint by over 435,000 pounds of CO<sub>2</sub> per year, and save the DOE over \$78,000 in paper costs annually.**

[Lexmark printers 6 years and younger all have duplex capability. The following duplex initiatives can reduce paper consumption and save money:](#)

**Setting duplex as your default setting on your printer**

**Educating end users about the benefit of duplex printing.**

[For more information on how the DOE is focused on Sustainability check:](#)

<http://schools.nyc.gov/community/facilities/sustainability/about/>

## Actions you can take to Save your School Money

Use highest yield toner whenever possible to lower the cost per page.  
 Consider replacing printers over 6 years old to optimize eco-friendly printer environment.  
 Duplex multiple page documents when possible to reduce paper usage.

#### Printer details

Model	Serial Number	Age in Years	Utilization	ATS Printer	Avg Mono Pages	Avg Color Pages	Avg Monthly Volume
CS510de	5027509460NHR	7	1%			44	44

CS622DE	50299150325FF	0				
MS510DN	45147GHH4D7M3	2	3%		437	437
MS510DN	45146PHH3K8KK	3	7%		977	977
MS510DN	45147GHH4D7LR	2	20%		2731	2731
MS510DN	45146PHH3K8RB	3	3%		386	386
MS510DN	45146PHH3K8KG	3	5%		673	673
MS510DN	45147GHH4D7MB	2				
MS510DN	45147GHH4D7M6	2				
MS510DN	45147GHH4D7MD	2	9%		1312	1312
MS621DN	4600820004MHG	1	2%		456	456
MS621DN	46008280091HP	1	3%		620	620
MS621DN	4600820004MTM	1	1%		137	137
MS621DN	46008280091HT	1	4%		798	798
MS621DN	46008280091HV	1	3%		512	512
MS621DN	460085100L6G4	1				
MS621DN	460085100L6H5	1	6%		1194	1194
MS621DN	460085100L6GB	1	1%		226	226
MS621DN	460085100L6H4	1	9%		1802	1802
MS621DN	460090200LWCX	1				
MS621DN	460090200LWDO	1				
MS621DN	460090200LWD5	1				
MS810DE	40637D6606CDT	2	10%	Yes	2020	2020
MS810DE	40637D6606CCK	2	2%		430	430
MS822DE	4064902014L5R	1	3%		1483	1483
MS822DE	4064902014MDD	1	6%		3081	3081
MS822DE	4064902014MF0	1				
MX410de	701545LM0MHF5	5	6%		634	634
MX410de	701545LM0N02G	5	6%		577	577
MX711dhe	7463369902M6G	7	24%	Yes	6037	6037
MX711DHE	74637D6601DL8	2	26%		6450	6450
MX722ADHE	7464843020X76	1	1%		1143	1143
T640	792NMFC	12	2%	Yes	395	395
T650dn Low Volt CA US	7939914	9				
T650n	7938GK5	10				
T650n	7938H62	3	0%		61	61
T650n	7938H32	4	0%		53	53
T650n	7938H23	4	0%		20	20
T650n	7933Z2T	4	4%		896	896
T650n	7938H35	4				
T650n	7938GZM	4				
T650n	7938H3H	3	5%		1078	1078
T650n	7938H27	4				
T650n	7932KV1	11	1%		282	282
T650n	N94P2I50	9				
T650n	793993Y	11				
T650n	793992X	11	7%		1472	1472
T650n	793992F	11	10%		2039	2039
T650n	79325DX	11				
T650n	79398W5	11	10%		1994	1994
T650n	79398W7	11	0%		68	68
T650n	79398YR	11	7%		1481	1481
T650n	793LBX7	9	3%		658	658
T650n	7937YL4	11				
T650n	7937YDC	11	2%		350	350
T650n	79398T0	11	1%		256	256
T650n	79398WL	11				
T650n	79398WY	11	3%		596	596
T650n	79398WX	11				
T650n	79398W9	11	2%		356	356
T650n	79398W1	11	1%		150	150
T650n	79398Y1	11	1%		103	103
T650n	7932KW9	11		Yes		
T650n	79398V5	11	6%	Yes	1101	1101
T650n	7932KWR	11		Yes		

<< More data continued on Next Page >>

15K667 - Jan 2020 - Page 3

### Printer Details - Page 2

Model	Serial Number	Age in Years	Utilization	ATS Printer	Avg Mono Pages	Avg Color Pages	Avg Monthly Volume
T650n	793992G	11		Yes			
T650n	7932KX2	11	1%		242		242
T650n	79398ZM	11	4%	Yes	875		875
T650n	NNQ72GI0	9	3%		615		615

