

**Lexmark Managed Print Services Monthly Report: Jan 2020**  
**19K065 - P.S. 065, 696 Jamaica Avenue, Brooklyn, NY 11208-0000**

Please find enclosed a snap shot of your school's printer environment. The printer breakdown and data encompasses only the printers we can see on your network. You may have additional printers that are locally connected (e.g. USB attached), but those are not included in this breakdown.

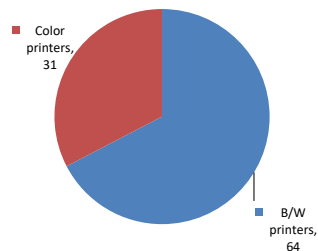
**Chart 1 – School Printer Breakdown**

This provides your school's enrollment, along with the number of printers, including the distribution between B/W and color printers.

**P.S. 065**

Enrollment	554
B/W printers	64
Color printers	31
Total printers	95

**Color/Mono Device Breakdown**



From the list provided on page 3 are all of your printers represented? If not, how many are missing Providing Lexmark the asset data that is missing will allow us to give you a more accurate picture of your printer environment.

Do you know how many printers you have in your main office, compared to the number of people who sit in the main office? Reducing the number of devices and using the most efficient models in the right locations can help your school save money.

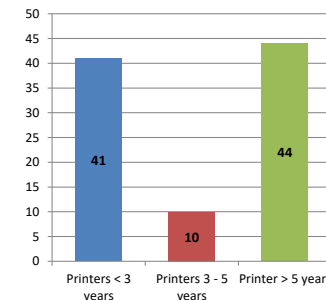
**Chart 2 – Printer Age Statistics**

Here we show the average age of your printers and show the distribution among 3 age categories; under 3 years old, 3-5 years old and over 5 years old.

**Printer Age Statistics**

Average Age (years)	5
Printers < 3 years	41
Printers 3 - 5 years	10
Printer > 5 years	44

**Printer Age Statistics**



The age of your printer fleet plays a large role in your annual printer maintenance and toner cost. The DOE only supports printers 6 years and younger.

Once the warranty expires and the age of your device exceeds 6 years, maintenance and repairs become very costly.

New printers have higher toner yields than older printers, resulting in lower cost per page which saves money.

Newer printers are Energy Star compliant and have advanced eco settings which help reduce energy usage and saves money.

**Glossary**

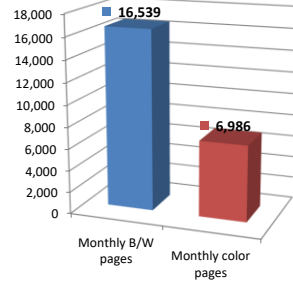
B/W - Black and White Printing Only  
 Color - Color or Black and White Printing

Duplex - Printing on both sides of the paper.  
 Simplex - Single Sided Printing

### Chart 3 – Volume of Pages Printed

This provides your printed page volumes for the previous month for both B/W and color print jobs. In addition, a utilization percentage is calculated by comparing your print volume for each printer to the maximum monthly volume capacity for that printer model.

Color/Mono Pages Printed



#### Volume of pages printed

Monthly B/W pages	16,539
Monthly color pages	6,986
Total monthly pages	23,525
Color page %	30%
Utilization %	2%

[Do you know if all of your printers are being used and how much?](#)

**Knowing where volumes are created helps identify areas for consolidation and helps you select the most efficient printers for replacement.**

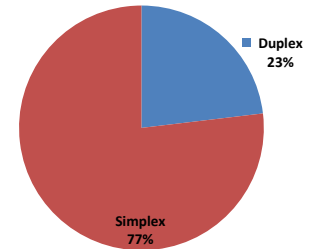
[Are you printing a large amount of color volume?](#)

**Controlling color volume, which typically costs more than black and white, can help your school save money.**

### Chart 4 – Duplex Breakdown

This section shows the percentage of duplexed (double-sided) pages printed along with your duplex opportunity. Duplex opportunity is the total number of pages that could be printed duplex and does not include single page documents. Keep in mind, only the newer printers report duplex statistics. The duplex opportunity shows the prior month's print volume, from the printers with duplex statistics, that could have been duplexed.

Duplex Vs. Simplex



#### Duplex breakdown

Duplex opportunity	3,382
Duplex	23%

[Did you know that your printers are able to print on both back and front of the page?](#)

**Increasing your school's use of double sided printing helps reduce your environmental impact and will help your school save money.**

[The average duplex rate for the NYC DOE is 14%](#)

**A modest improvement in duplex of 10% would reduce the carbon footprint by over 435,000 pounds of CO<sub>2</sub> per year, and save the DOE over \$78,000 in paper costs annually.**

[Lexmark printers 6 years and younger all have duplex capability. The following duplex initiatives can reduce paper consumption and save money:](#)

**Setting duplex as your default setting on your printer**

**Educating end users about the benefit of duplex printing.**

[For more information on how the DOE is focused on Sustainability check:](#)

<http://schools.nyc.gov/community/facilities/sustainability/about/>

## Actions you can take to Save your School Money

- Use highest yield toner whenever possible to lower the cost per page.
- Consider replacing printers over 6 years old to optimize eco-friendly printer environment.
- Duplex multiple page documents when possible to reduce paper usage.

#### Printer details

Model	Serial Number	Age in Years	Utilization	ATS Printer	Avg Mono Pages	Avg Color Pages	Avg Monthly Volume
C544dw	9469D29	8					

C782n	940VZHB	11					
CS510de	5027459450BT6	7	8%		92	448	540
CS510de	5027509460NRD	7					
CS510de	5027509460NRC	7	0%		1	21	22
CS510de	5027459450BTX	7	1%		21	47	68
CS510de	5027459450BRR	7					
CS510de	5027519450NTB	7	2%		7	139	146
CS510de	5027089461BRT	7	26%		1816	28	1844
CS510de	5027459450BTR	7					
CS510DE	502734946FYW3	3					
CS510DE	502734946FYW9	3					
CS510DE	502734946FYWG	3					
CS510DE	502734946FYTB	3					
CS510DE	502734946FYWC	3					
CS510DE	502734946FYW4	3	1%		9	43	52
CS725DE	50287490124KM	2					
CS725DE	50287490124KP	2	1%		68	125	193
CS725DE	50287490124KF	2					
CS725DE	50288310F302K	1	6%		610	617	1227
CX725DHE	7528748011YG1	2	2%		167	316	483
CX725DHE	75288250F2P76	1	25%	Yes	1466	3566	5032
CX725DHE	75288040126TL	1	5%	Yes	356	570	926
CX725DHE	7528623010B9V	3	1%	Yes	2	185	187
CX725DHE	7528630010GPV	3		Yes			
CX725DHE	75287500120N3	2	2%		63	428	491
CX725DHE	7528740011P72	2	2%		12	453	465
CX725DHE	75289220F400V	0					
E460dw	72HP3LM	9					
E460dw	72HP3PB	9	0%		25		25
E460dw	72HP3M0	9					
MS510DN	45147GHH4D7H8	2					
MS510dn	451420HH03K3W	7					
MS510dn	451420HH05YC3	7	5%		692		692
MS510DN	45147GHH4D7HR	2					
MS510dn	451420HH05YCF	7					
MS510DN	45147GHH4D7KW	2	13%		1865		1865
MS510DN	45147GHH4D7K0	2					
MS510dn	451420HH03K42	7					
MS510dn	451420HH03K45	7					
MS510dn	451420HH03K46	7		Yes			
MS510dn	451420HH03K3V	7					
MS510DN	45147GHH4D7GM	2					
MS510DN	45147GHH4D7HN	2					
MS510DN	45147GHH4D7KV	2	8%		1129		1129
MS510DN	45147GHH4D7KR	2					
MS510DN	45147GHH4D7HY	2					
MS510DN	45147GHH4D7HV	2					
MS510DN	45147GHH4D7P5	2	13%		1805		1805
MS510DN	45147GHH4D7KD	2	8%		1072		1072
MS510DN	45147GHH4D7HW	2	1%		112		112
MS510DN	45147GHH4D7K4	2	30%		4248		4248
MS510DN	45147GHH4D7KK	2					
MS510DN	45147GHH4D7HT	2					
MS510DN	45147GHH4D7K3	2					
MS510DN	45147GHH4D7P8	2					
MS510DN	45147GHH4D7K8	2					
MS510DN	45147GHH4D7K9	2					
MS510DN	45147GHH4D7K5	2					
MS510DN	45147GHH4D7K7	2					
MS510DN	45147GHH4D7KB	2					
MS510DN	45147GHH4D7KH	2					
MS510DN	45147GHH4D7HK	2	5%		685		685
MS510DN	45147GHH4D7KC	2					
MS510DN	45147GHH4D7KN	2	1%		170		170

<< More data continued on Next Page >>

19K065 - Jan 2020 - Page 3

### Printer Details - Page 2

Model	Serial Number	Age in Years	Utilization	ATS Printer	Avg Mono Pages	Avg Color Pages	Avg Monthly Volume
MS510DN	45147GHH4D7KG	2					
MS510DN	45147GHH4D7HX	2					
MS510DN	45147GHH4D7KP	2					
MS510DN	45147GHH4D7K6	2					

MX710de	74635C66018CM	4			
MX710de	746326990212C	6			
MX711dhe	746325990195V	7			Yes
MX711DHE	74636C6600X59	3			Yes
MX711dhe	74632699020ZR	7			
MX711dhe Low Volt CA US	7463269902114	7			
T650n	79398WG	11			
T650n	79398WC	11			
T650n	7938GNH	11			
T650n	7937BLV	11	0%	46	46
T650n	79398XC	11			
T650n	79398WZ	11			
T650n	793993Z	11			
T650n	7934WVK9	11			
T650n	7937YPH	11			
T650n	7937YRK	11			Yes
T650n	7932L07	11			
T650n	7932K98	11			
T650n Low Volt	7939929	11			
T650n Low Volt	7939934	11			
T650n Low Volt	7939911	11			
T650n Low Volt	7939935	11			
T650n Low Volt	7939918	11			
X734de Low Volt EMEA NA LAC	9421419	10			
X748de	752620944044X	7			
X748de	7526439440M8Z	5			Yes
0	0	0			
0	0	0			
0	0	0			
0	0	0			
0	0	0			
0	0	0			
0	0	0			
0	0	0			
0	0	0			
0	0	0			
0	0	0			
0	0	0			
0	0	0			
0	0	0			
0	0	0			
0	0	0			
0	0	0			
0	0	0			
0	0	0			
0	0	0			

<< End of Data >>

For more information regarding this snapshot, please contact your Lexmark team

### Lexmark Team

Title	Name	E-Mail	Phone
Client Executive	Mindy Maher	<a href="mailto:mmaher@lexmark.com">mmaher@lexmark.com</a>	212-880-2837
Site Operations	Mark Ennis	<a href="mailto:mennis@lexmark.com">mennis@lexmark.com</a>	908-210-3030
Systems Engineer	TBD	TBD	TBD

### CDW Team

CDW Sales Department – 800-705-4239

Title	Name	E-Mail	Phone
Sales Manager	John Skidmore	<a href="mailto:john.skidmore@cdwg.com">john.skidmore@cdwg.com</a>	(866) 687-3187
Sales Operations	Jon Gray	<a href="mailto:jongray@cdw.com">jongray@cdw.com</a>	(203) 851-7133
<a href="mailto:NYCDOE@cdwg.com">NYCDOE@cdwg.com</a>			