

Please find enclosed a snap shot of your school's printer environment. The printer breakdown and data encompasses only the printers we can see on your network. You may have additional printers that are locally connected (e.g. USB attached), but those are not included in this breakdown.

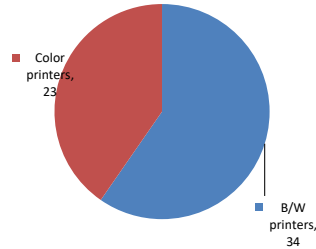
Chart 1 – School Printer Breakdown

This provides your school's enrollment, along with the number of printers, including the distribution between B/W and color printers.

The Christa McAuliffe School N.S. 187

Enrollment	982
B/W printers	34
Color printers	23
Total printers	57

Color/Mono Device Breakdown



From the list provided on page 3 are all of your printers represented? If not, how many are missing Providing Lexmark the asset data that is missing will allow us to give you a more accurate picture of your printer environment.

Do you know how many printers you have in your main office, compared to the number of people who sit in the main office? Reducing the number of devices and using the most efficient models in the right locations can help your school save money.

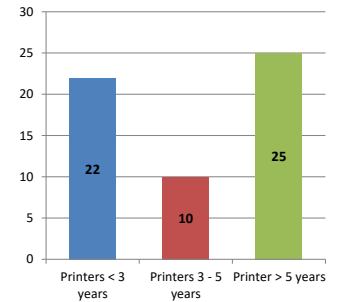
Chart 2 – Printer Age Statistics

Here we show the average age of your printers and show the distribution among 3 age categories; under 3 years old, 3-5 years old and over 5 years old.

Printer Age Statistics

Average Age (years)	5
Printers < 3 years	22
Printers 3 - 5 years	10
Printer > 5 years	25

Printer Age Statistics



The age of your printer fleet plays a large role in your annual printer maintenance and toner cost. The DOE only supports printers 6 years and younger.

Once the warranty expires and the age of your device exceeds 6 years, maintenance and repairs become very costly.

New printers have higher toner yields than older printers, resulting in lower cost per page which saves money.

Newer printers are Energy Star compliant and have advanced eco settings which help reduce energy usage and saves money.

Glossary

B/W - Black and White Printing Only

Color - Color or Black and White Printing

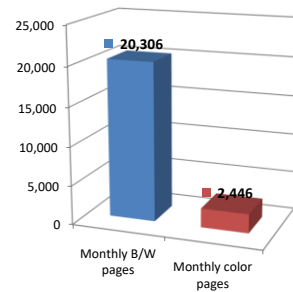
Duplex - Printing on both sides of the paper.

Simplex - Single Sided Printing

Chart 3 – Volume of Pages Printed

This provides your printed page volumes for the previous month for both B/W and color print jobs. In addition, a utilization percentage is calculated by comparing your print volume for each printer to the maximum monthly volume capacity for that printer model.

Color/Mono Pages Printed



Volume of pages printed

Monthly B/W pages	20,306
Monthly color pages	2,446
Total monthly pages	22,752
Color page %	11%
Utilization %	3%

[Do you know if all of your printers are being used and how much?](#)

Knowing where volumes are created helps identify areas for consolidation and helps you select the most efficient printers for replacement.

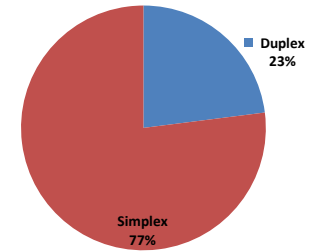
[Are you printing a large amount of color volume?](#)

Controlling color volume, which typically costs more than black and white, can help your school save money.

Chart 4 – Duplex Breakdown

This section shows the percentage of duplexed (double-sided) pages printed along with your duplex opportunity. Duplex opportunity is the total number of pages that could be printed duplex and does not include single page documents. Keep in mind, only the newer printers report duplex statistics. The duplex opportunity shows the prior month's print volume, from the printers with duplex statistics, that could have been duplexed.

Duplex Vs. Simplex



Duplex breakdown

Duplex opportunity	3,646
Duplex	23%

[Did you know that your printers are able to print on both back and front of the page?](#)

Increasing your school's use of double sided printing helps reduce your environmental impact and will help your school save money.

[The average duplex rate for the NYC DOE is 14%](#)

A modest improvement in duplex of 10% would reduce the carbon footprint by over 435,000 pounds of CO₂ per year, and save the DOE over \$78,000 in paper costs annually.

[Lexmark printers 6 years and younger all have duplex capability. The following duplex initiatives can reduce paper consumption and save money:](#)

Setting duplex as your default setting on your printer

Educating end users about the benefit of duplex printing.

[For more information on how the DOE is focused on Sustainability check:](#)

<http://schools.nyc.gov/community/facilities/sustainability/about/>

Actions you can take to Save your School Money

- Use highest yield toner whenever possible to lower the cost per page.
- Consider replacing printers over 6 years old to optimize eco-friendly printer environment.
- Duplex multiple page documents when possible to reduce paper usage.

Printer details

Model	Serial Number	Age in Years	Utilization	ATS Printer	Avg Mono Pages	Avg Color Pages	Avg Monthly Volume
C534n	941DGFB	11					

C534n	9439BBX	12				
C534n	941DFH2	11				
C534n	9429BV8	12				
C534n	9429BWB	4	4%		106	106
C534n	941DGDG	11				
C544dn	9469CGM	8		Yes		
C544dn	9469CKX	8	28%		165	689
C544n	9464DVG	9				854
C748de	5026449425HVY	4				
C748de	5026429422FVF	6				
CS510 Low Volt	5027429454370	5				
CS510DE	502745945RGK4	2				
CS510DE	502739945R1VZ	2	6%		228	167
CS510DE	502713945KBH0	2				395
CX510de	7527349469MPR	4	9%		234	371
CX510de	7527179468FYC	4	4%		157	147
CX725DHE	7528704010XCP	3	12%	Yes	1427	1072
CX725DHE	7528704010XCR	3				2499
MS510DN	45147GHH4C9Z2	2	4%		567	567
MS510dn	451432HH0XZN1	6	3%		434	434
MS510dn	451432HH0XZN5	6	0%		57	57
MS510dn	451432HH0XZLF	6				
MS621DN	4600817003BHY	1	2%		315	315
MS621DN	4600817003BHZ	1	7%		1383	1383
MS621DN	4600817003BHR	1	0%		88	88
MS621DN	4600817003BK1	1				
MS621DN	4600817003BK6	1				
MS621DN	46009333107GW	0				
MS621DN	460093531144K	0				
MS621DN	460093531144R	0				
MS810DE	40638D6600BH1	2	29%		5879	5879
MS810DE	40637C660041C	3				
MX410de	701543LM0BB0F	6	3%		305	305
MX410DE	70156PLM1BWNN	3				
MX410DE	70156PLM1BWHW	3	7%		741	741
MX410de	701543LM0BB0Z	6	2%		235	235
MX410DE	70156PLM1BWK5	3	3%		269	269
MX410de	701543LM0BB16	6	9%		865	865
MX410DE	70156PLM1BWT7	3				
MX410DE	70156PLM17P7L	3	2%		158	158
MX410DE	70156PLM17P63	3	14%		1378	1378
MX410DE	70156PLM1BWKR	3	7%		650	650
MX410DE	70157GLM1F10H	3	1%		127	127
MX410de	701543LM0BB1N	6	23%		2338	2338
MX410de	701543LM0BB15	6	1%		50	50
MX410DE	70156PLM17P7T	3	8%		804	804
MX410DE	70156PLM17P6B	3				
MX421ADE	70178271032N6	1				
MX511dhe	701544HH0GY0N	5	5%	Yes	579	579
MX711dhe	74633699053WM	6	3%		767	767
SVCE322	721MHKH	15				
T630	991K38G	16				
T644	790D495	14		Yes		
X748de	75261894429D1	4		Yes		
X748de	75260394GORPK	6				
X748de	7526389440G3Y	7				

<< End of Data >>

For more information regarding this snapshot, please contact your Lexmark team

Lexmark Team

CDW Team
CDW Sales Department – 800-705-4239

Title	Name	E-Mail	Phone
Client Executive	Mindy Maher	mmaher@lexmark.com	212-880-2837
Site Operations	Mark Ennis	mennis@lexmark.com	908-210-3030
Systems Engineer	TBD	TBD	TBD

Title	Name	E-Mail	Phone
Sales Manager	John Skidmore	john.skidmore@cdwg.com	(866) 687-3187
Sales Operations	Jon Gray	jongray@cdw.com	(203) 851-7133
		NYCDOE@cdwg.com	