

Please find enclosed a snap shot of your school's printer environment. The printer breakdown and data encompasses only the printers we can see on your network. You may have additional printers that are locally connected (e.g. USB attached), but those are not included in this breakdown.

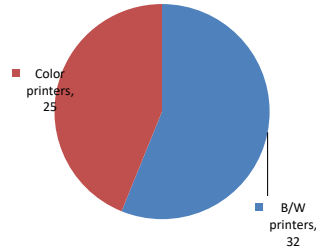
Chart 1 – School Printer Breakdown

This provides your school's enrollment, along with the number of printers, including the distribution between B/W and color printers.

P.S. 192 - The Magnet School For Math And Science

Enrollment	641
B/W printers	32
Color printers	25
Total printers	57

Color/Mono Device Breakdown



From the list provided on page 3 are all of your printers represented? If not, how many are missing Providing Lexmark the asset data that is missing will allow us to give you a more accurate picture of your printer environment.

Do you know how many printers you have in your main office, compared to the number of people who sit in the main office? Reducing the number of devices and using the most efficient models in the right locations can help your school save money.

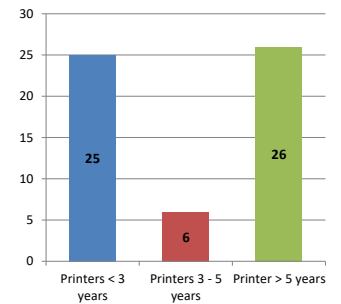
Chart 2 – Printer Age Statistics

Here we show the average age of your printers and show the distribution among 3 age categories; under 3 years old, 3-5 years old and over 5 years old.

Printer Age Statistics

Average Age (years)	5
Printers < 3 years	25
Printers 3 - 5 years	6
Printer > 5 years	26

Printer Age Statistics



The age of your printer fleet plays a large role in your annual printer maintenance and toner cost. The DOE only supports printers 6 years and younger.

Once the warranty expires and the age of your device exceeds 6 years, maintenance and repairs become very costly.

New printers have higher toner yields than older printers, resulting in lower cost per page which saves money.

Newer printers are Energy Star compliant and have advanced eco settings which help reduce energy usage and saves money.

Glossary

B/W - Black and White Printing Only

Color - Color or Black and White Printing

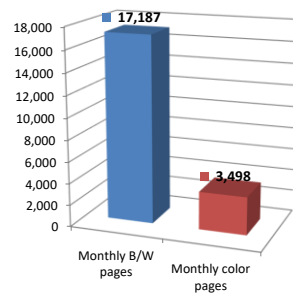
Duplex - Printing on both sides of the paper.

Simplex - Single Sided Printing

Chart 3 – Volume of Pages Printed

This provides your printed page volumes for the previous month for both B/W and color print jobs. In addition, a utilization percentage is calculated by comparing your print volume for each printer to the maximum monthly volume capacity for that printer model.

Color/Mono Pages Printed



Volume of pages printed

Monthly B/W pages	17,187
Monthly color pages	3,498
Total monthly pages	20,685
Color page %	17%
Utilization %	3%

[Do you know if all of your printers are being used and how much?](#)

Knowing where volumes are created helps identify areas for consolidation and helps you select the most efficient printers for replacement.

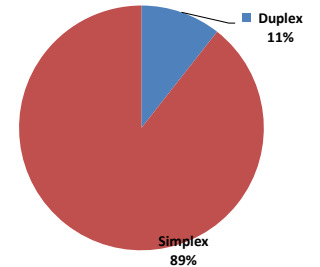
[Are you printing a large amount of color volume?](#)

Controlling color volume, which typically costs more than black and white, can help your school save money.

Chart 4 – Duplex Breakdown

This section shows the percentage of duplexed (double-sided) pages printed along with your duplex opportunity. Duplex opportunity is the total number of pages that could be printed duplex and does not include single page documents. Keep in mind, only the newer printers report duplex statistics. The duplex opportunity shows the prior month's print volume, from the printers with duplex statistics, that could have been duplexed.

Duplex Vs. Simplex



Duplex breakdown

Duplex opportunity	7,872
Duplex	11%

[Did you know that your printers are able to print on both back and front of the page?](#)

Increasing your school's use of double sided printing helps reduce your environmental impact and will help your school save money.

[The average duplex rate for the NYC DOE is 14%](#)

A modest improvement in duplex of 10% would reduce the carbon footprint by over 435,000 pounds of CO₂ per year, and save the DOE over \$78,000 in paper costs annually.

[Lexmark printers 6 years and younger all have duplex capability. The following duplex initiatives can reduce paper consumption and save money:](#)

- Setting duplex as your default setting on your printer**
- Educating end users about the benefit of duplex printing.**

[For more information on how the DOE is focused on Sustainability check: <http://schools.nyc.gov/community/facilities/sustainability/about/>](#)

Actions you can take to Save your School Money

- Use highest yield toner whenever possible to lower the cost per page.
- Consider replacing printers over 6 years old to optimize eco-friendly printer environment.
- Duplex multiple page documents when possible to reduce paper usage.

Printer details

Model	Serial Number	Age in Years	Utilization	ATS Printer	Avg Mono Pages	Avg Color Pages	Avg Monthly Volume
C544dn	94684G2	8					

C544dn	94555F7	9					
C544dn	94555FG	9					
C544dn	9454XFY	9					
C544dn	9458VH1	8					
C544n	9464DVK	9	17%		94	408	502
C544n	94555F8	8					
C544n	9468B2K	7	9%	Yes	42	240	282
C748de	5026209424RXH	4	5%	Yes	380	157	537
CS510de	5027089461CCF	5					
CS510de	5027089461BN6	7					
CS510de	5027459450BNC	7	6%		357	35	392
CS510de	5027089464XZR	5					
CS510de	502703945136R	7					
CS510de	5027089461BNN	7	24%		420	1226	1646
CS510DE	502748945RY13	2	25%		1132	640	1772
CS510de	5027159465B4N	5					
CS510de	5027089461BN0	7					
CS510de	5027459450BHH	7					
CS510DE	502739945R1RM	2					
CS622DE	50298190405RG	1	7%		79	668	747
CS622DE	50298140402NF	1	2%		58	124	182
CS622DE	50298170403ZZ	1					
CS622DE	5029829040FNT	1					
CX622ADE	7529845141BKN	0					
E342n	94F4W86	9					
E360dn	72MDH49	9	9%		523		523
E360dn	72MFHGG	10	16%		950		950
E460dn	72HYRZP	7	4%		405		405
MS510DN	45148PHH4P775	2					
MS510dn	451455HH26WVW	5	3%		412		412
MS510dn	451420HH0582D	7	5%		643		643
MS510DN	45146PHH3K8G0	3	1%		157		157
MS510dn	451445HH22V44	5	17%		2421		2421
MS510DN	45147GHH3RD30	3					
MS510DN	45147GHH484DP	2					
MS510DN	45147GHH4C96H	2					
MS621DN	460081400260V	1	12%		2343		2343
MS621DN	460084100FB50	1	1%		270		270
MS621DN	46008140025Y6	1	12%		2453		2453
MS621DN	46008280091WD	1					
MS621DN	4600830009V45	1	0%		4		4
MS621DN	460084100FB2V	1					
MS621DN	4600949317BWK	0					
MS621DN	4600949317BZV	0					
MS810de	40635C66001P2	5	9%	Yes	1884		1884
MS810de	40635C6603PMD	5	5%	Yes	1087		1087
MS810DE	40636C6606F12	3					
MS822DE	4064835012DF4	1					
MX421ADE	70178271032NB	1	4%		443		443
MX421ADE	70178271032ND	1					
MX421ADE	70178271032NN	1	5%		511		511
MX421ADE	7017839205NBZ	1					
MX421ADE	7017839205N8B	1					
MX711dhe	7463479906MKX	4	0%	Yes	119		119
T640n	790CRND	12					
X646dte	7920D4X	11		Yes			

<< End of Data >>

For more information regarding this snapshot, please contact your Lexmark team

Lexmark Team

CDW Team
CDW Sales Department – 800-705-4239

Title	Name	E-Mail	Phone
Client Executive	Mindy Maher	mmaher@lexmark.com	212-880-2837
Site Operations	Mark Ennis	mennis@lexmark.com	908-210-3030
Systems Engineer	TBD	TBD	TBD

Title	Name	E-Mail	Phone
Sales Manager	John Skidmore	john.skidmore@cdwg.com	(866) 687-3187
Sales Operations	Jon Gray	jongray@cdw.com	(203) 851-7133
		NYCDOE@cdwg.com	