

Please find enclosed a snap shot of your school's printer environment. The printer breakdown and data encompasses only the printers we can see on your network. You may have additional printers that are locally connected (e.g. USB attached), but those are not included in this breakdown.

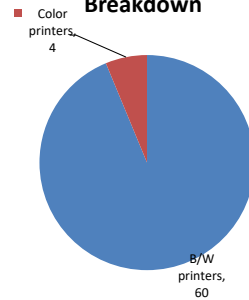
Chart 1 – School Printer Breakdown

This provides your school's enrollment, along with the number of printers, including the distribution between B/W and color printers.

J.H.S. 220 John J. Pershing

Enrollment	1493
B/W printers	60
Color printers	4
Total printers	64

Color/Mono Device Breakdown



From the list provided on page 3 are all of your printers represented? If not, how many are missing Providing Lexmark the asset data that is missing will allow us to give you a more accurate picture of your printer environment.

Do you know how many printers you have in your main office, compared to the number of people who sit in the main office? Reducing the number of devices and using the most efficient models in the right locations can help your school save money.

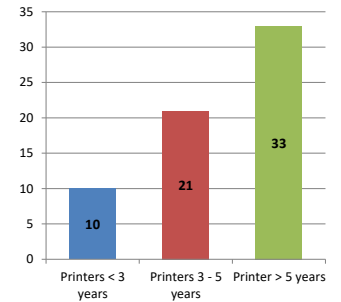
Chart 2 – Printer Age Statistics

Here we show the average age of your printers and show the distribution among 3 age categories; under 3 years old, 3-5 years old and over 5 years old.

Printer Age Statistics

Average Age (years)	5
Printers < 3 years	10
Printers 3 - 5 years	21
Printer > 5 years	33

Printer Age Statistics



The age of your printer fleet plays a large role in your annual printer maintenance and toner cost. The DOE only supports printers 6 years and younger.

Once the warranty expires and the age of your device exceeds 6 years, maintenance and repairs become very costly.

New printers have higher toner yields than older printers, resulting in lower cost per page which saves money.

Newer printers are Energy Star compliant and have advanced eco settings which help reduce energy usage and saves money.

Glossary

B/W - Black and White Printing Only

Color - Color or Black and White Printing

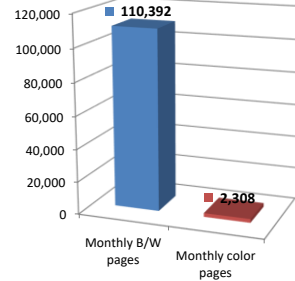
Duplex - Printing on both sides of the paper.

Simplex - Single Sided Printing

Chart 3 – Volume of Pages Printed

This provides your printed page volumes for the previous month for both B/W and color print jobs. In addition, a utilization percentage is calculated by comparing your print volume for each printer to the maximum monthly volume capacity for that printer model.

Color/Mono Pages Printed



Volume of pages printed

Monthly B/W pages	110,392
Monthly color pages	2,308
Total monthly pages	112,700
Color page %	2%
Utilization %	9%

[Do you know if all of your printers are being used and how much?](#)

Knowing where volumes are created helps identify areas for consolidation and helps you select the most efficient printers for replacement.

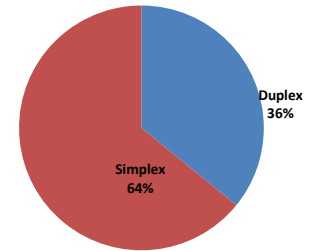
[Are you printing a large amount of color volume?](#)

Controlling color volume, which typically costs more than black and white, can help your school save money.

Chart 4 – Duplex Breakdown

This section shows the percentage of duplexed (double-sided) pages printed along with your duplex opportunity. Duplex opportunity is the total number of pages that could be printed duplex and does not include single page documents. Keep in mind, only the newer printers report duplex statistics. The duplex opportunity shows the prior month's print volume, from the printers with duplex statistics, that could have been duplexed.

Duplex Vs. Simplex



Duplex breakdown

Duplex opportunity	15,980
Duplex	36%

[Did you know that your printers are able to print on both back and front of the page?](#)

Increasing your school's use of double sided printing helps reduce your environmental impact and will help your school save money.

[The average duplex rate for the NYC DOE is 14%](#)

A modest improvement in duplex of 10% would reduce the carbon footprint by over 435,000 pounds of CO₂ per year, and save the DOE over \$78,000 in paper costs annually.

[Lexmark printers 6 years and younger all have duplex capability. The following duplex initiatives can reduce paper consumption and save money:](#)

Setting duplex as your default setting on your printer

Educating end users about the benefit of duplex printing.

[For more information on how the DOE is focused on Sustainability check:](#)

<http://schools.nyc.gov/community/facilities/sustainability/about/>

Actions you can take to Save your School Money

Use highest yield toner whenever possible to lower the cost per page.
 Consider replacing printers over 6 years old to optimize eco-friendly printer environment.
 Duplex multiple page documents when possible to reduce paper usage.

Printer details

Model	Serial Number	Age in Years	Utilization	ATS Printer	Avg Mono Pages	Avg Color Pages	Avg Monthly Volume
CSS10DE	502745945RGK3	2					

CX725DHE	7528630010GT1	3	2%	Yes	338	109	447
CX725DHE	7528734011LC6	2	12%		466	1932	2398
CX725DHE	75288490F3CCM	1	2%		194	267	461
E460dn	72HNMKN	8	7%		702		702
LaserjetP2055	CNB9713159	10					
MS510dn	451443HH14K3L	6					
MS510dn	451432HH0XZMZ	6					
MS510dn	451432HH0XZLN3	6					
MS510dn	451420HH056N2	7	17%		2402		2402
MS510dn	451420HH057R1	6	26%		3695		3695
MS510dn	451432HH0VFW	6					
MS510DN	45146PHH3K8T7	3					
MS510dn	451445HH2118W	5					
MS510dn	451432HH0XZNB	6					
MS510dn	451432HH0XZNO	6					
MS510dn	451445HH21194	5	11%		1513		1513
MS510dn	451445HH212BN	5					
MS510dn	451432HH0VVMZ	6	6%		854		854
MS510dn	451420HH057RM	7	36%		5050		5050
MS510DN	45146PHH37TYH	3	11%		1515		1515
MS510DN	45146PHH37TXG	3	68%		9567		9567
MS510dn	451420HH057PK	7	6%		848		848
MS510DN	45146PHH37TYK	3	3%		352		352
MS510DN	701544HH0GY3B	5					
MS510DN	45146PHH37T6K	3	1%		112		112
MS510dn	451420HH057PX	7					
MS510DN	45146PHH37TXW	3	13%		1757		1757
MS510DN	45146PHH37TZ3	3	2%		256		256
MS510dn	451445HH2118D	5	43%		5955		5955
MS510dn	451420HH056R8	7	11%		1494		1494
MS510DN	45146PHH3K8T2	3	19%		2615		2615
MS510dn	451445HH2118N	5					
MS510dn	451420HH057RP	7	13%		1786		1786
MS510DN	45146PHH3K8T1	3					
MS621DN	460090200LVW1	1	21%		4140		4140
MS621DN	460085100L6T0	1	35%		7077		7077
MS621DN	460090200LVHX	1					
MS810	451432HH0XZN4	6	2%		1824		1824
MS810	451420HH057PM	7	4%		2812		2812
MS810	451420HH057RY	7	7%		5226		5226
MS810de	406336990DTH3	5	12%	Yes	2472		2472
MS810de	40635C6604LX2	4	16%	Yes	3152		3152
MS810DE	40638D6600BPN	2	44%		8796		8796
MS810n	40634C66007H7	4		Yes			
MX410DE	70156PLM17DKK	3	71%		7088		7088
MX410DE	70156PLM17DHO	3	11%		1134		1134
MX410DE	70156PLM16YVT	3					
MX410DE	70156PLM16Z7Z	3	6%		621		621
MX410DE	70156PLM16Z8B	3	4%		360		360
MX410DE	70156PLM16Z6N	3	17%		1737		1737
MX410DE	70156PLM16Z6D	3	26%		2561		2561
MX410DE	70156PLM17DFT	3					
MX410DE	70156PLM17DGK	3					
MX522ADHE	70178361055Z0	1	36%	Yes	5359		5359
MX711DHE	74637D6601DM4	2	17%	Yes	4210		4210
MX711dhe	74634C6600NKN	5	4%	Yes	1046		1046
MX711dhe	74634C6600NFH	5	12%	Yes	3040		3040
MX722ADHE	746481102001D	1	1%		824		824
T644	791C1F9	13					
T650dn	793YY5D	10	26%		5160		5160
T650n	793YY3K	10					
T650n	793XKX3	10	1%		282		282
X646dte	792HTDN	11		Yes			

<< End of Data >>

For more information regarding this snapshot, please contact your Lexmark team

Lexmark Team

CDW Team
CDW Sales Department – 800-705-4239

Title	Name	E-Mail	Phone
Client Executive	Mindy Maher	mmaher@lexmark.com	212-880-2837
Site Operations	Mark Ennis	mennis@lexmark.com	908-210-3030
Systems Engineer	TBD	TBD	TBD

Title	Name	E-Mail	Phone
Sales Manager	John Skidmore	john.skidmore@cdwg.com	(866) 687-3187
Sales Operations	Jon Gray	jongray@cdw.com	(203) 851-7133
		NYCDOE@cdwg.com	