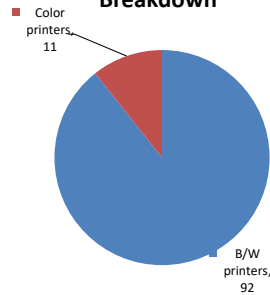


Please find enclosed a snap shot of your school's printer environment. The printer breakdown and data encompasses only the printers we can see on your network. You may have additional printers that are locally connected (e.g. USB attached), but those are not included in this breakdown.

**Chart 1 – School Printer Breakdown**

This provides your school's enrollment, along with the number of printers, including the distribution between B/W and color printers.

**Color/Mono Device Breakdown**



**New Utrecht High School**

Enrollment	3524
B/W printers	92
Color printers	11
Total printers	103

From the list provided on page 3 are all of your printers represented? If not, how many are missing Providing Lexmark the asset data that is missing will allow us to give you a more accurate picture of your printer environment.

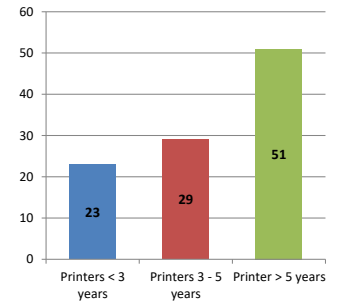
Do you know how many printers you have in your main office, compared to the number of people who sit in the main office?

Reducing the number of devices and using the most efficient models in the right locations can help your school save money.

**Chart 2 – Printer Age Statistics**

Here we show the average age of your printers and show the distribution among 3 age categories; under 3 years old, 3-5 years old and over 5 years old.

**Printer Age Statistics**



**Printer Age Statistics**

Average Age (years)	5
Printers < 3 years	23
Printers 3 - 5 years	29
Printer > 5 years	51

The age of your printer fleet plays a large role in your annual printer maintenance and toner cost. The DOE only supports printers 6 years and younger.

Once the warranty expires and the age of your device exceeds 6 years, maintenance and repairs become very costly.

New printers have higher toner yields than older printers, resulting in lower cost per page which saves money.

Newer printers are Energy Star compliant and have advanced eco settings which help reduce energy usage and saves money.

**Glossary**

B/W - Black and White Printing Only

Color - Color or Black and White Printing

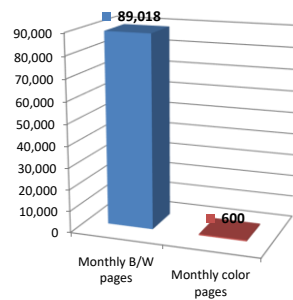
Duplex - Printing on both sides of the paper.

Simplex - Single Sided Printing

### Chart 3 – Volume of Pages Printed

This provides your printed page volumes for the previous month for both B/W and color print jobs. In addition, a utilization percentage is calculated by comparing your print volume for each printer to the maximum monthly volume capacity for that printer model.

Color/Mono Pages Printed



#### Volume of pages printed

Monthly B/W pages	89,018
Monthly color pages	600
Total monthly pages	89,618
Color page %	1%
Utilization %	4%

[Do you know if all of your printers are being used and how much?](#)

**Knowing where volumes are created helps identify areas for consolidation and helps you select the most efficient printers for replacement.**

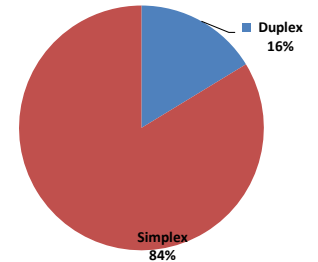
[Are you printing a large amount of color volume?](#)

**Controlling color volume, which typically costs more than black and white, can help your school save money.**

### Chart 4 – Duplex Breakdown

This section shows the percentage of duplexed (double-sided) pages printed along with your duplex opportunity. Duplex opportunity is the total number of pages that could be printed duplex and does not include single page documents. Keep in mind, only the newer printers report duplex statistics. The duplex opportunity shows the prior month's print volume, from the printers with duplex statistics, that could have been duplexed.

Duplex Vs. Simplex



#### Duplex breakdown

Duplex opportunity	24,913
Duplex	16%

[Did you know that your printers are able to print on both back and front of the page?](#)

**Increasing your school's use of double sided printing helps reduce your environmental impact and will help your school save money.**

[The average duplex rate for the NYC DOE is 14%](#)

**A modest improvement in duplex of 10% would reduce the carbon footprint by over 435,000 pounds of CO<sub>2</sub> per year, and save the DOE over \$78,000 in paper costs annually.**

[Lexmark printers 6 years and younger all have duplex capability. The following duplex initiatives can reduce paper consumption and save money:](#)

**Setting duplex as your default setting on your printer**

**Educating end users about the benefit of duplex printing.**

[For more information on how the DOE is focused on Sustainability check:](#)

<http://schools.nyc.gov/community/facilities/sustainability/about/>

## Actions you can take to Save your School Money

- Use highest yield toner whenever possible to lower the cost per page.
- Consider replacing printers over 6 years old to optimize eco-friendly printer environment.
- Duplex multiple page documents when possible to reduce paper usage.

#### Printer details

Model	Serial Number	Age in Years	Utilization	ATS Printer	Avg Mono Pages	Avg Color Pages	Avg Monthly Volume
C544n	7958FWR	8					

C748de	5026449425HYF	4					
CS510de	502722946BFDN	4	4%		61	217	278
CS510de	502720946BBDZ	4	7%		289	190	479
CS510DE	502730946FFZH	3	5%		250	73	323
CS510DE	502730946FFZM	3					
CS725DE	50288510F3KZ0	1	0%		2	59	61
CX510DE	752748946GBZ5	3					
CX725DHE	7528630010GN9	3	1%		225	61	286
MS510dn	451444HH1G3K3	5	1%		179		179
MS510dn	451420HH058B6	7					
MS510dn	451444HH1G3H6	5	2%		347		347
MS510dn	451444HH1G3K0	5					
MS510DN	70157GHH1L9RP	2	1%	Yes	208		208
MS510dn	45145PHH2N5NC	4					
MS510dn	451432HH0Y31V	6					
MS510DN	45147GHH4H1BL	2					
MS510DN	45147GHH4H1YH	2					
MS621DN	460090530NFDZ	1	21%		4134		4134
MS810	451430HH06XY3	7					
MS810	5026429422G26	6					
MS810de	4063369907TV3	6					
MS810de	40635C6606MK3	4	10%		2018		2018
MS810de	406347990PBBY	5					
MS810de	4063369907TX2	6					
MS810de	406347990PB97	5	6%		1230		1230
MS810DE	40636C66031PF	3					
MS810de	4063369907TRG	6					
MS810de	406336990461L	7					
MS810de	4063369907TP4	6					
MS810de	406347990PBBW	5					
MS810de	406347990PBB6	5	5%		1053		1053
MS810de	4063369908L60	6	1%		247		247
MS810de	406347990PBBZ	5	10%	Yes	2073		2073
MS810DE	40636C66046PP	3	8%	Yes	1619		1619
MS810de	406347990PB98	5	20%		4000		4000
MS810de	40634C6600TV0	5					
MS810de	406347990PBBF	5	29%		5832		5832
MS810DE	40637C660043L	3					
MS810n	40635C6600BYX	4					
MS822DE	4064821010K54	1	0%		21		21
MS822DE	4064821010M25	1	3%		1612		1612
MS822DE	4064835012DDB	1					
MS822DE	4064835012BP9	1	6%		3126		3126
MS822DE	4064835012BRL	1	5%		2530		2530
MS822DE	4064835012BTH	1					
MS822DE	4064903014PH4	1	1%		460		460
MS822DE	4064903014PK3	1					
MS822DE	4064903014PLH	1					
MS822DE	4064912015K50	0					
MX410DE	70157GLM1H31H	2	3%		333		333
MX410de	701533LM092N8	6	14%		1440		1440
MX410DE	70156PLM182L8	3					
MX410de	70155PLM110L5	4	7%	Yes	692		692
MX410DE	70157GLM1H323	2	12%		1181		1181
MX410DE	70156PLM16YRZ	3					
MX511de	70155PHH0XYD8	4					
MX511dhe	701544HH0GCPN	5	7%		899		899
MX511dhe	70156PHH124PX	4					
MX511DHE	70157GHH1F8YC	2	4%	Yes	533		533
MX511DHE	70157GHH1MX0L	2					
MX710de	74635C66028PL	4	21%	Yes	15634		15634
MX710de	74635C660293D	4		Yes			
MX711DHE	74637C660000Y	3	4%	Yes	980		980
MX711DHE	74637C6600034	3		Yes			

<< More data continued on Next Page >>

20K445 - Jan 2020 - Page 3

### Printer Details - Page 2

Model	Serial Number	Age in Years	Utilization	ATS Printer	Avg Mono Pages	Avg Color Pages	Avg Monthly Volume
MX711DHE	74636C6601WNF	3	4%	Yes	879		879
MX711dhe	74634C6600NN3	5	33%	Yes	8374		8374
MX711dhe	74635C6600HBV	4					
MX711dhe	74635C6602GFG	4	46%		11550		11550

