

Please find enclosed a snap shot of your school's printer environment. The printer breakdown and data encompasses only the printers we can see on your network. You may have additional printers that are locally connected (e.g. USB attached), but those are not included in this breakdown.

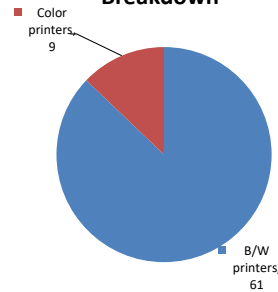
**Chart 1 – School Printer Breakdown**

This provides your school's enrollment, along with the number of printers, including the distribution between B/W and color printers.

**High School Of Telecommunication Arts And Technol**

Enrollment	1227
B/W printers	61
Color printers	9
Total printers	70

**Color/Mono Device Breakdown**



From the list provided on page 3 are all of your printers represented? If not, how many are missing Providing Lexmark the asset data that is missing will allow us to give you a more accurate picture of your printer environment.

Do you know how many printers you have in your main office, compared to the number of people who sit in the main office?

Reducing the number of devices and using the most efficient models in the right locations can help your school save money.

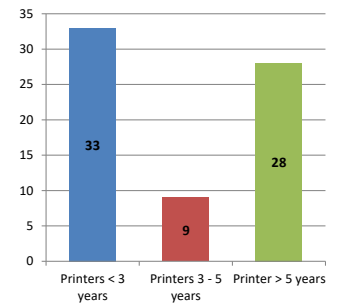
**Chart 2 – Printer Age Statistics**

Here we show the average age of your printers and show the distribution among 3 age categories; under 3 years old, 3-5 years old and over 5 years old.

**Printer Age Statistics**

Average Age (years)	4
Printers < 3 years	33
Printers 3 - 5 years	9
Printer > 5 years	28

**Printer Age Statistics**



The age of your printer fleet plays a large role in your annual printer maintenance and toner cost. The DOE only supports printers 6 years and younger.

Once the warranty expires and the age of your device exceeds 6 years, maintenance and repairs become very costly.

New printers have higher toner yields than older printers, resulting in lower cost per page which saves money.

Newer printers are Energy Star compliant and have advanced eco settings which help reduce energy usage and saves money.

**Glossary**

B/W - Black and White Printing Only

Color - Color or Black and White Printing

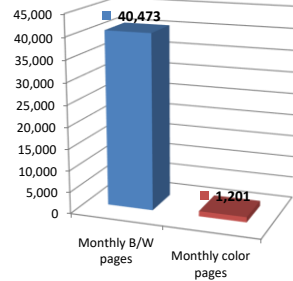
Duplex - Printing on both sides of the paper.

Simplex - Single Sided Printing

### Chart 3 – Volume of Pages Printed

This provides your printed page volumes for the previous month for both B/W and color print jobs. In addition, a utilization percentage is calculated by comparing your print volume for each printer to the maximum monthly volume capacity for that printer model.

Color/Mono Pages Printed



**Volume of pages printed**

Monthly B/W pages	40,473
Monthly color pages	1,201
Total monthly pages	41,674
Color page %	3%
Utilization %	2%

[Do you know if all of your printers are being used and how much?](#)

**Knowing where volumes are created helps identify areas for consolidation and helps you select the most efficient printers for replacement.**

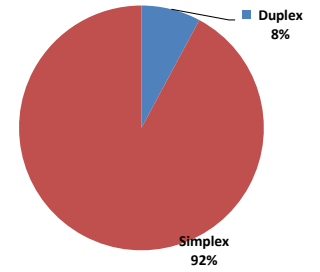
[Are you printing a large amount of color volume?](#)

**Controlling color volume, which typically costs more than black and white, can help your school save money.**

### Chart 4 – Duplex Breakdown

This section shows the percentage of duplexed (double-sided) pages printed along with your duplex opportunity. Duplex opportunity is the total number of pages that could be printed duplex and does not include single page documents. Keep in mind, only the newer printers report duplex statistics. The duplex opportunity shows the prior month's print volume, from the printers with duplex statistics, that could have been duplexed.

Duplex Vs. Simplex



**Duplex breakdown**

Duplex opportunity	5,164
Duplex	8%

[Did you know that your printers are able to print on both back and front of the page?](#)

**Increasing your school's use of double sided printing helps reduce your environmental impact and will help your school save money.**

[The average duplex rate for the NYC DOE is 14%](#)

**A modest improvement in duplex of 10% would reduce the carbon footprint by over 435,000 pounds of CO<sub>2</sub> per year, and save the DOE over \$78,000 in paper costs annually.**

[Lexmark printers 6 years and younger all have duplex capability. The following duplex initiatives can reduce paper consumption and save money:](#)

**Setting duplex as your default setting on your printer**

**Educating end users about the benefit of duplex printing.**

[For more information on how the DOE is focused on Sustainability check: <http://schools.nyc.gov/community/facilities/sustainability/about/>](#)

## Actions you can take to Save your School Money

- Use highest yield toner whenever possible to lower the cost per page.
- Consider replacing printers over 6 years old to optimize eco-friendly printer environment.
- Duplex multiple page documents when possible to reduce paper usage.

**Printer details**

Model	Serial Number	Age in Years	Utilization	ATS Printer	Avg Mono Pages	Avg Color Pages	Avg Monthly Volume
C544dn	946CVF6	7					

CS510de	50273894577TB	5					
CS510DE	502704946HNW0	3					
CS510DE	502745946RKD5	2					
CX510DE	752741946FT42	3					
CX622ADE	7529827140F2G	1					
CX622ADE	75299081427GZ	0	12%		344	857	1201
CX622ADE	75299081427TP	0					
CX622ADE	752993114584X	0	6%		279	344	623
MS310dn	451431LM095BL	7					
MS510dn	451445HH1ZC12	5					
MS510DN	70155PLM1188T	4	1%		109		109
MS510dn	451433HH13L9T	6	2%		281		281
MS510dn	451430HH07LK4	7	17%		2370		2370
MS510dn	451430HH07LHZ	7	2%		299		299
MS510dn	451433HH13L9V	4					
MS510dn	451433HH13L9P	6					
MS510dn	451445HH1ZC56	5					
MS510dn	45145PHH2HZL5	4					
MS510dn	451420HH05869	7	3%		401		401
MS510DN	45147GHH42K57	2					
MS510DN	45148PHH4P777	2	8%		1101		1101
MS510DN	70155PLM1189N	4	1%		191		191
MS621DN	4600820004MFT	1					
MS621DN	4600814002619	1					
MS621DN	4600820004MG6	1	2%		404		404
MS621DN	460083600CZFK	1					
MS621DN	460083600CZK1	1					
MS621DN	460090200LWBZ	1					
MS621DN	46009333107FB	0					
MS621DN	46009333107T4	0					
MS621DN	46009333107WR	0					
MS621DN	460093331080C	0					
MS621DN	460093331080D	0					
MS621DN	4600933310805	0					
MS621DN	4600933310808	0					
MS621DN	46009333107H2	0					
MS621DN	46009353113YD	0					
MS621DN	46009353113Y5	0					
MS621DN	4600935311435	0					
MS810	451420HH05824	7					
MS810	451420HH053XZ	7					
MS810	45145PHH2N5P5	4	1%		940		940
MS810de	4063369907V0H	6	1%	Yes	119		119
MS810de	406347990N7H1	5					
MS810de	40635C6604LMK	4	0%		21		21
MS810n	4063369907TYD	6	1%		518		518
MS822DE	4064839012WVV	0					
MS822DE	4064839012X3B	0					
MS822DE	4064839012X3V	0	8%		4237		4237
MS822DE	4064839012XC6	0					
MS822DE	4064839012X9P	0					
MX410DE	70157GLM1L5XR	2	1%		71		71
MX710de	74635C6600GZ2	4	0%	Yes	14		14
MX711dhe	74633699039G5	6		Yes			
MX722ADHE	7464832020CKV	1	13%	Yes	12698		12698
MX722ADHE	7464832020CGB	1	5%	Yes	4686		4686
T640n	7910KZV	12					
T640n	7910KZ8	12					
T640n	7910L0B	12	9%		1279		1279
T640n	7910L07	12	1%		193		193
T650n	794V0FD	8					
T650n	7955M8R	8	28%		5614		5614
T650n	7953YV6	8	15%		2939		2939
T650n	794K360	9		Yes			

<< More data continued on Next Page >>

20K485 - Jan 2020 - Page 3

### Printer Details - Page 2

Model	Serial Number	Age in Years	Utilization	ATS Printer	Avg Mono Pages	Avg Color Pages	Avg Monthly Volume
T650n	794V072	8					
T650n	794V06Z	8	4%	Yes	723		723
T650n	7955MF3	8					
T650n	7955M83	8					

