

**Lexmark Managed Print Services Monthly Report: Jan 2020**  
**21K177 - P.S. 177 The Marlboro, 346 Avenue P, Brooklyn, NY 11204**

Please find enclosed a snap shot of your school's printer environment. The printer breakdown and data encompasses only the printers we can see on your network. You may have additional printers that are locally connected (e.g. USB attached), but those are not included in this breakdown.

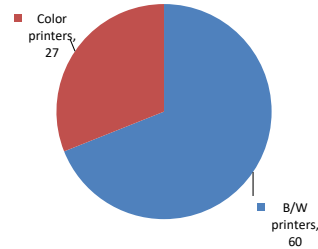
**Chart 1 – School Printer Breakdown**

This provides your school's enrollment, along with the number of printers, including the distribution between B/W and color printers.

**P.S. 177 The Marlboro**

Enrollment	981
B/W printers	60
Color printers	27
Total printers	87

**Color/Mono Device Breakdown**



From the list provided on page 3 are all of your printers represented? If not, how many are missing Providing Lexmark the asset data that is missing will allow us to give you a more accurate picture of your printer environment.

Do you know how many printers you have in your main office, compared to the number of people who sit in the main office? Reducing the number of devices and using the most efficient models in the right locations can help your school save money.

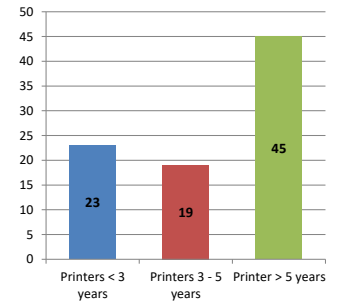
**Chart 2 – Printer Age Statistics**

Here we show the average age of your printers and show the distribution among 3 age categories; under 3 years old, 3-5 years old and over 5 years old.

**Printer Age Statistics**

Average Age (years)	5
Printers < 3 years	23
Printers 3 - 5 years	19
Printer > 5 years	45

**Printer Age Statistics**



The age of your printer fleet plays a large role in your annual printer maintenance and toner cost. The DOE only supports printers 6 years and younger.

Once the warranty expires and the age of your device exceeds 6 years, maintenance and repairs become very costly.

New printers have higher toner yields than older printers, resulting in lower cost per page which saves money.

Newer printers are Energy Star compliant and have advanced eco settings which help reduce energy usage and saves money.

**Glossary**

B/W - Black and White Printing Only

Color - Color or Black and White Printing

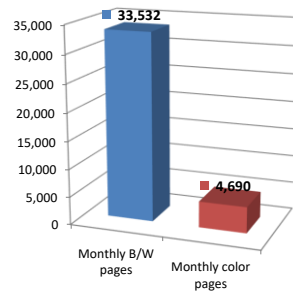
Duplex - Printing on both sides of the paper.

Simplex - Single Sided Printing

### Chart 3 – Volume of Pages Printed

This provides your printed page volumes for the previous month for both B/W and color print jobs. In addition, a utilization percentage is calculated by comparing your print volume for each printer to the maximum monthly volume capacity for that printer model.

Color/Mono Pages Printed



**Volume of pages printed**

Monthly B/W pages	33,532
Monthly color pages	4,690
Total monthly pages	38,222
Color page %	12%
Utilization %	3%

[Do you know if all of your printers are being used and how much?](#)

**Knowing where volumes are created helps identify areas for consolidation and helps you select the most efficient printers for replacement.**

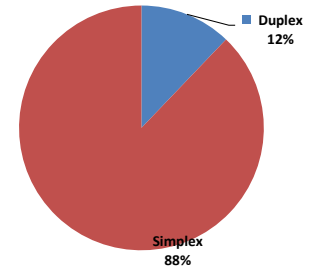
[Are you printing a large amount of color volume?](#)

**Controlling color volume, which typically costs more than black and white, can help your school save money.**

### Chart 4 – Duplex Breakdown

This section shows the percentage of duplexed (double-sided) pages printed along with your duplex opportunity. Duplex opportunity is the total number of pages that could be printed duplex and does not include single page documents. Keep in mind, only the newer printers report duplex statistics. The duplex opportunity shows the prior month's print volume, from the printers with duplex statistics, that could have been duplexed.

Duplex Vs. Simplex



**Duplex breakdown**

Duplex opportunity	10,405
Duplex	12%

[Did you know that your printers are able to print on both back and front of the page?](#)

**Increasing your school's use of double sided printing helps reduce your environmental impact and will help your school save money.**

[The average duplex rate for the NYC DOE is 14%](#)

**A modest improvement in duplex of 10% would reduce the carbon footprint by over 435,000 pounds of CO<sub>2</sub> per year, and save the DOE over \$78,000 in paper costs annually.**

[Lexmark printers 6 years and younger all have duplex capability. The following duplex initiatives can reduce paper consumption and save money:](#)

**Setting duplex as your default setting on your printer**

**Educating end users about the benefit of duplex printing.**

[For more information on how the DOE is focused on Sustainability check:](#)

<http://schools.nyc.gov/community/facilities/sustainability/about/>

## Actions you can take to Save your School Money

- Use highest yield toner whenever possible to lower the cost per page.
- Consider replacing printers over 6 years old to optimize eco-friendly printer environment.
- Duplex multiple page documents when possible to reduce paper usage.

**Printer details**

Model	Serial Number	Age in Years	Utilization	ATS Printer	Avg Mono Pages	Avg Color Pages	Avg Monthly Volume
C534n	941F91K	11					

C534n Printer Low Volt NA LAD R		9418397	13				
C544dn	9467XW9		8				
CS510de	5027089461BR5		7	2%	22	130	152
CS510de	502743945444C		6				
CS510de	5027089461BRD		7				
CS510de	50270594616V9		7	6%	97	293	390
CS510de	5027339466XF5		5	4%	26	229	255
CS510de	5027089461BPX		7				
CS510de	5027339466XFN		5				
CS510de	5027089461BNX		7				
CS510de	5027459450BWR		7				
CS622DE	5029845040Y3N		1				
CS622DE	5029845040Y38		1				
CX510DE	752739946FMFM		3	6%	57	368	425
CX510DE	752739946FMFV		3	15%	462	597	1059
CX510DE	752735946P13W		2	19%	1140	222	1362
CX622ADE	7529838140ZGW		1	1%	31	90	121
CX622ADE	7529838140ZH1		1	4%	215	153	368
CX622ADE	7529838140ZKV		1	2%	75	132	207
CX725DHE	75288250F2P5L		1	23%	3224	1357	4581
CX725DHE	75288460F38LH		1	5%	499	429	928
E460dn	72HKYPR		9				
E460dn	72HKYFX		9				
E460dn	72HKYPH		9				
MS510dn	45145PHH2N5GR		4				
MS510dn	451445HH2116C		5	1%	172		172
MS510dn	451445HH21163		5				
MS510dn	451445HH2116K		5	5%	632		632
MS510dn	451445HH21160		5				
MS510dn	451445HH2116M		5	4%	531		531
MS510dn	451433HH10VXX		6	2%	349		349
MS510dn	451432HH0XZDV		6	16%	2257		2257
MS510dn	451445HH2116G		5	3%	469		469
MS510dn	451433HH10VYR		6				
MS510dn	45146PHH2X3RP		4	4%	587		587
MS510dn	451432HH0Y42K		6	3%	367		367
MS510dn	451433HH13LB8		6				
MS510dn	451445HH2115Y		5	6%	827		827
MS510dn	451433HH13LB6		6				
MS510dn	45146PHH2X3T0		4	5%	639		639
MS510dn	45146PHH2X301		4	6%	907		907
MS510dn	451433HH13LBH		6	3%	461		461
MS510dn	451433HH10VYW		6	3%	485		485
MS510dn	451445HH2116P		5				
MS510dn	451433HH13LBC		6	6%	846		846
MS510dn	451445HH21166		5				
MS510dn	451432HH0XZD2		6	2%	251		251
MS510dn	451445HH2115X		5	13%	1840		1840
MS510dn	45146PHH2X3T7		4	1%	106		106
MS510dn	45146PHH2X307		4	6%	843		843
MS510dn	45146PHH2X3RB		4	7%	973		973
MS510dn	45146PHH2X3T6		4	3%	358		358
MS510dn	45146PHH2X3T8		4	3%	371		371
MS510dn	451445HH21144		5				
MS510dn	451432HH0Y41H		6	5%	670		670
MS510dn	45146PHH2X3TK		4	15%	2055		2055
MS510dn	451432HH0Y41L		6	9%	1308		1308
MS510dn	451432HH0Y406		6				
MS510dn	45146PHH2X3RT		4	2%	212		212
MS510dn	45146PHH2X3TF		4	3%	480		480
MS510dn	451433HH10VXZ		6	3%	369		369
MS510dn	45146PHH2X302		4	2%	243		243
MS510DN	45146PHH3DGZL		3				
MS621DN	460083600CZDW		1				

<< More data continued on Next Page >>

Printer Details - Page 2

Model	Serial Number	Age in Years	Utilization	ATS Printer	Avg Mono Pages	Avg Color Pages	Avg Monthly Volume
MS621DN	460083600CZFC	1	1%		250		250
MS621DN	460083600CZFG	1	5%		1075		1075
MS621DN	460083600CZFH	1	1%		183		183
MS621DN	460083600CZFM	1					

