

Please find enclosed a snap shot of your school's printer environment. The printer breakdown and data encompasses only the printers we can see on your network. You may have additional printers that are locally connected (e.g. USB attached), but those are not included in this breakdown.

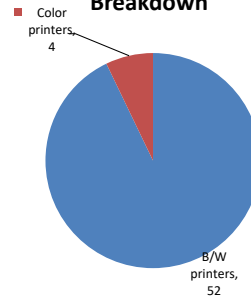
**Chart 1 – School Printer Breakdown**

This provides your school's enrollment, along with the number of printers, including the distribution between B/W and color printers.

**Abraham Lincoln High School**

Enrollment	1872
B/W printers	52
Color printers	4
Total printers	56

**Color/Mono Device Breakdown**



From the list provided on page 3 are all of your printers represented? If not, how many are missing Providing Lexmark the asset data that is missing will allow us to give you a more accurate picture of your printer environment.

Do you know how many printers you have in your main office, compared to the number of people who sit in the main office? Reducing the number of devices and using the most efficient models in the right locations can help your school save money.

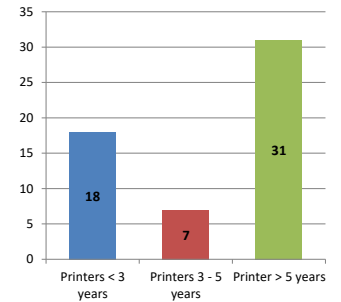
**Chart 2 – Printer Age Statistics**

Here we show the average age of your printers and show the distribution among 3 age categories; under 3 years old, 3-5 years old and over 5 years old.

**Printer Age Statistics**

Average Age (years)	5
Printers < 3 years	18
Printers 3 - 5 years	7
Printer > 5 years	31

**Printer Age Statistics**



The age of your printer fleet plays a large role in your annual printer maintenance and toner cost. The DOE only supports printers 6 years and younger.

Once the warranty expires and the age of your device exceeds 6 years, maintenance and repairs become very costly.

New printers have higher toner yields than older printers, resulting in lower cost per page which saves money.

Newer printers are Energy Star compliant and have advanced eco settings which help reduce energy usage and saves money.

**Glossary**

B/W - Black and White Printing Only

Color - Color or Black and White Printing

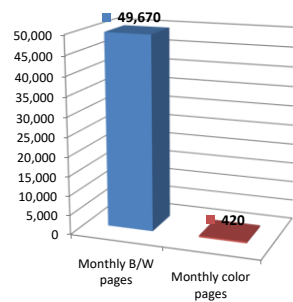
Duplex - Printing on both sides of the paper.

Simplex - Single Sided Printing

### Chart 3 – Volume of Pages Printed

This provides your printed page volumes for the previous month for both B/W and color print jobs. In addition, a utilization percentage is calculated by comparing your print volume for each printer to the maximum monthly volume capacity for that printer model.

Color/Mono Pages Printed



**Volume of pages printed**

Monthly B/W pages	49,670
Monthly color pages	420
Total monthly pages	50,090
Color page %	1%
Utilization %	4%

[Do you know if all of your printers are being used and how much?](#)

**Knowing where volumes are created helps identify areas for consolidation and helps you select the most efficient printers for replacement.**

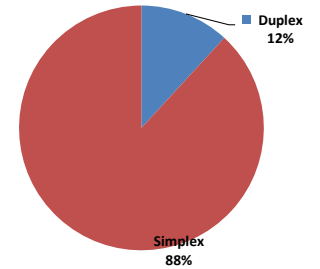
[Are you printing a large amount of color volume?](#)

**Controlling color volume, which typically costs more than black and white, can help your school save money.**

### Chart 4 – Duplex Breakdown

This section shows the percentage of duplexed (double-sided) pages printed along with your duplex opportunity. Duplex opportunity is the total number of pages that could be printed duplex and does not include single page documents. Keep in mind, only the newer printers report duplex statistics. The duplex opportunity shows the prior month's print volume, from the printers with duplex statistics, that could have been duplexed.

Duplex Vs. Simplex



**Duplex breakdown**

Duplex opportunity	12,713
Duplex	12%

[Did you know that your printers are able to print on both back and front of the page?](#)

**Increasing your school's use of double sided printing helps reduce your environmental impact and will help your school save money.**

[The average duplex rate for the NYC DOE is 14%](#)

**A modest improvement in duplex of 10% would reduce the carbon footprint by over 435,000 pounds of CO<sub>2</sub> per year, and save the DOE over \$78,000 in paper costs annually.**

[Lexmark printers 6 years and younger all have duplex capability. The following duplex initiatives can reduce paper consumption and save money:](#)

- Setting duplex as your default setting on your printer**
- Educating end users about the benefit of duplex printing.**

[For more information on how the DOE is focused on Sustainability check: <http://schools.nyc.gov/community/facilities/sustainability/about/>](#)

## Actions you can take to Save your School Money

- Use highest yield toner whenever possible to lower the cost per page.
- Consider replacing printers over 6 years old to optimize eco-friendly printer environment.
- Duplex multiple page documents when possible to reduce paper usage.

**Printer details**

Model	Serial Number	Age in Years	Utilization	ATS Printer	Avg Mono Pages	Avg Color Pages	Avg Monthly Volume
C748de	5026069424DYY	5	11%		676	420	1096

CS622DE	50299010417RY	1				
CS725DE	50288480F3F75	1				
CX510de	752751946BKT6	4				
E360dn	72MG0HY	10	1%		74	74
MS510DN	45147GHH4BX79	2	1%		150	150
MS510dn	45145PHH2K6LF	4	16%		2273	2273
MS510dn	451457HH2H0G5	4				
MS510DN	45147GHH3RCCN	3				
MS510DN	45147GHH3RD1T	3				
MS510DN	45147GHH3RD21	3				
MS510DN	45147GHH3RXN4	3	6%		850	850
MS510DN	45148PHH4P366	2				
MS621DN	46008280091M8	1				
MS621DN	46008280091NF	1	3%		529	529
MS621DN	46008280091N6	1				
MS810de	4063369908T42	6	1%		100	100
MS810de	4063369908T3W	6	0%		10	10
MS810de	4063369908T41	6	2%		475	475
MS810de	4063369908T39	4	4%		868	868
MS810de	4063369908L6V	6	2%		481	481
MS810DE	40637D6606C88	2				
MS822DE	4064821010K4T	1	10%	Yes	4764	4764
MS822DE	4064821010K5X	1				
MS822DE	4064821010K6D	1	3%		1680	1680
MS822DE	4064821010K6G	1				
MS822DE	4064821010K66	1	1%		334	334
MS822DE	4064821010K68	1	9%		4350	4350
MX711dhe	74634C66015ZC	5	40%	Yes	10121	10121
MX711dhe	74634C6600NXP	5	3%	Yes	824	824
MX711dhe	7463369902M6F	7	0%		36	36
T650dn	794BZT4	8	12%		2322	2322
T650dn	794C030	4	1%	Yes	206	206
T650dn	795HGBF	6	11%		2212	2212
T650n	794C02T	9				
T650n	794K394	9	0%		2	2
T650n	794K326	9	0%		78	78
T650n	794BZTZ	9	22%		4484	4484
T650n	794K2Y1	9				
T650n	794K2XN	9				
T650n	794BZV8	9	0%		25	25
T650n	794BZRT	9				
T650n	794K370	9	12%		2472	2472
T650n	794BZRN	9				
T650n	795HGCG	7	13%		2637	2637
T650n	794K366	9	2%	Yes	388	388
T650n	794BZRZ	9	4%	Yes	772	772
T650n	795HGCM	7	5%	Yes	1051	1051
T650n	795HGCG	7	3%	Yes	664	664
T650n	794K34P	9	0%		77	77
T650n	795HGCD	7		Yes		
T650n	794BZV2	9				
T650n	795HGBP	7	3%	Yes	526	526
T650n	795HGBT	7	2%		342	342
T650n	795HGC9	7	12%		2367	2367
T650n	794BZVD	9	2%		450	450

<< End of Data >>

For more information regarding this snapshot, please contact your Lexmark team

**Lexmark Team**

**CDW Team**  
**CDW Sales Department – 800-705-4239**

Title	Name	E-Mail	Phone
Client Executive	Mindy Maher	<a href="mailto:mmaher@lexmark.com">mmaher@lexmark.com</a>	212-880-2837
Site Operations	Mark Ennis	<a href="mailto:mennis@lexmark.com">mennis@lexmark.com</a>	908-210-3030
Systems Engineer	TBD	TBD	TBD

Title	Name	E-Mail	Phone
Sales Manager	John Skidmore	<a href="mailto:john.skidmore@cdwg.com">john.skidmore@cdwg.com</a>	(866) 687-3187
Sales Operations	Jon Gray	<a href="mailto:jongray@cdw.com">jongray@cdw.com</a>	(203) 851-7133
		<a href="mailto:NYCDOE@cdwg.com">NYCDOE@cdwg.com</a>	