

Lexmark Managed Print Services Monthly Report: Jan 2020
22K109 - P.S. 109, 4502 Farragut Rd, Brooklyn, NY 11203-6524

Please find enclosed a snap shot of your school's printer environment. The printer breakdown and data encompasses only the printers we can see on your network. You may have additional printers that are locally connected (e.g. USB attached), but those are not included in this breakdown.

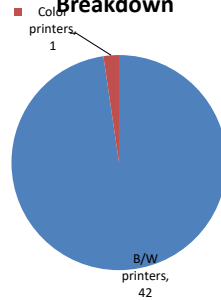
Chart 1 – School Printer Breakdown

This provides your school's enrollment, along with the number of printers, including the distribution between B/W and color printers.

P.S. 109

Enrollment	516
B/W printers	42
Color printers	1
Total printers	43

Color/Mono Device Breakdown



From the list provided on page 3 are all of your printers represented? If not, how many are missing
Providing Lexmark the asset data that is missing will allow us to give you a more accurate picture of your printer environment.

Do you know how many printers you have in your main office, compared to the number of people who sit in the main office?
Reducing the number of devices and using the most efficient models in the right locations can help your school save money.

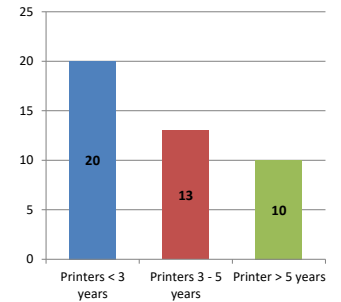
Chart 2 – Printer Age Statistics

Here we show the average age of your printers and show the distribution among 3 age categories; under 3 years old, 3-5 years old and over 5 years old.

Printer Age Statistics

Average Age (years)	5
Printers < 3 years	20
Printers 3 - 5 years	13
Printer > 5 years	10

Printer Age Statistics



The age of your printer fleet plays a large role in your annual printer maintenance and toner cost. The DOE only supports printers 6 years and younger.

Once the warranty expires and the age of your device exceeds 6 years, maintenance and repairs become very costly.

New printers have higher toner yields than older printers, resulting in lower cost per page which saves money.

Newer printers are Energy Star compliant and have advanced eco settings which help reduce energy usage and saves money.

Glossary

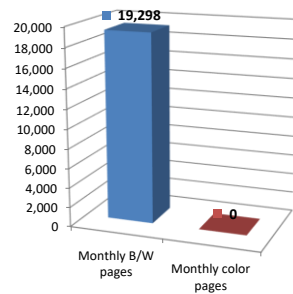
B/W - Black and White Printing Only
 Color - Color or Black and White Printing

Duplex - Printing on both sides of the paper.
 Simplex - Single Sided Printing

Chart 3 – Volume of Pages Printed

This provides your printed page volumes for the previous month for both B/W and color print jobs. In addition, a utilization percentage is calculated by comparing your print volume for each printer to the maximum monthly volume capacity for that printer model.

Color/Mono Pages Printed



Volume of pages printed

Monthly B/W pages	19,298
Monthly color pages	0
Total monthly pages	19,298
Color page %	0%
Utilization %	3%

[Do you know if all of your printers are being used and how much?](#)

Knowing where volumes are created helps identify areas for consolidation and helps you select the most efficient printers for replacement.

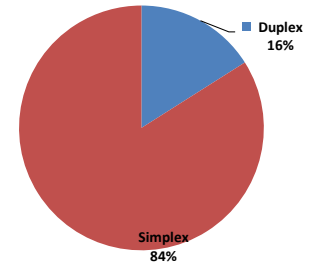
[Are you printing a large amount of color volume?](#)

Controlling color volume, which typically costs more than black and white, can help your school save money.

Chart 4 – Duplex Breakdown

This section shows the percentage of duplexed (double-sided) pages printed along with your duplex opportunity. Duplex opportunity is the total number of pages that could be printed duplex and does not include single page documents. Keep in mind, only the newer printers report duplex statistics. The duplex opportunity shows the prior month's print volume, from the printers with duplex statistics, that could have been duplexed.

Duplex Vs. Simplex



Duplex breakdown

Duplex opportunity	5,118
Duplex	16%

[Did you know that your printers are able to print on both back and front of the page?](#)

Increasing your school's use of double sided printing helps reduce your environmental impact and will help your school save money.

[The average duplex rate for the NYC DOE is 14%](#)

A modest improvement in duplex of 10% would reduce the carbon footprint by over 435,000 pounds of CO₂ per year, and save the DOE over \$78,000 in paper costs annually.

[Lexmark printers 6 years and younger all have duplex capability. The following duplex initiatives can reduce paper consumption and save money:](#)

Setting duplex as your default setting on your printer

Educating end users about the benefit of duplex printing.

[For more information on how the DOE is focused on Sustainability check:](#)

<http://schools.nyc.gov/community/facilities/sustainability/about/>

Actions you can take to Save your School Money

- Use highest yield toner whenever possible to lower the cost per page.
- Consider replacing printers over 6 years old to optimize eco-friendly printer environment.
- Duplex multiple page documents when possible to reduce paper usage.

Printer details

Model	Serial Number	Age in Years	Utilization	ATS Printer	Avg Mono Pages	Avg Color Pages	Avg Monthly Volume
E323t Low Volt US	8806FX7	4					

LaserjetP2055	CNB9927749	10				
MS510DN	45147GHH4HNLL	2				
MS510DN	45147GHH42HTW	2				
MS510DN	45148PHH4P2NT	2				
MS510DN	45147GHH4HNLM	2				
MS510DN	45146PHH39NM9	3				
MS510DN	45148GHH4MK1B	2	3%		442	442
MS510DN	45148GHH4MK56	2	0%	Yes	59	59
MS510DN	45147GHH4HN1W	2	4%		612	612
MS510DN	45148GHH4MHPL	2	9%		1267	1267
MS510DN	45147GHH42HY3	2				
MS510DN	45147GHH42HZ7	2	1%		197	197
MS510DN	45148GHH4MHXR	2	3%		392	392
MS510DN	45148GHH4MK30	2				
MS510DN	45148PHH4P2TG	2	0%		18	18
MS510DN	45147GHH4H1ZZ	1				
MS621DN	460085100L6MR	1				
MS621DN	460084900K8NY	1				
MS621DN	460084900K8PB	1	1%		284	284
MS810de	40635C6604LPC	4	4%		816	816
MS810de	40635C6604LNF	4				
MS810de	40635C6604LNC	4	32%		6392	6392
MS810de	40635C6604LPK	4	0%		99	99
MS810de	40635C66033PH	4	3%		640	640
MS810de	40635C66033RK	4	1%		215	215
MS810de	40635C6604LNG	4				
MS810de	40635C6604LPD	4				
MS810de	40635C6604LPB	4	10%	Yes	1986	1986
MS810DE	40637D6605X0Y	2	6%		1150	1150
MX410DE	70157GLM1F0GW	3				
MX410DE	70156PLM1799T	3				
MX710de	74635C660292B	4	4%	Yes	2693	2693
MX711dhe	74634C66015K0	5	8%	Yes	2036	2036
MX711DHE	74636C6601041	3				
SVCE322	88008ZB	14				
T630n	991NY7W	13				
T630n	991FH2L	14				
T630n	991FGV7	14		Yes		
T630n	991NY8D	13				
T632n Low Volt	4132981	8				
T632n Low Volt SPR US	4132927	8				
T632n Low Volt SPR US	4132975	8				

<< End of Data >>

For more information regarding this snapshot, please contact your Lexmark team

Lexmark Team

**CDW Team
CDW Sales Department – 800-705-4239**

Title	Name	E-Mail	Phone
Client Executive	Mindy Maher	mmaher@lexmark.com	212-880-2837
Site Operations	Mark Ennis	mennis@lexmark.com	908-210-3030
Systems Engineer	TBD	TBD	TBD

Title	Name	E-Mail	Phone
Sales Manager	John Skidmore	john.skidmore@cdwg.com	(866) 687-3187
Sales Operations	Jon Gray	jongray@cdw.com	(203) 851-7133
		NYCDOE@cdwg.com	