

Please find enclosed a snap shot of your school's printer environment. The printer breakdown and data encompasses only the printers we can see on your network. You may have additional printers that are locally connected (e.g. USB attached), but those are not included in this breakdown.

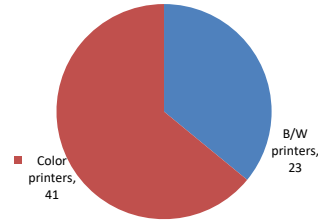
**Chart 1 – School Printer Breakdown**

This provides your school's enrollment, along with the number of printers, including the distribution between B/W and color printers.

**P.S. 194 Raoul Wallenberg**

Enrollment	543
B/W printers	23
Color printers	41
Total printers	64

**Color/Mono Device Breakdown**



From the list provided on page 3 are all of your printers represented? If not, how many are missing Providing Lexmark the asset data that is missing will allow us to give you a more accurate picture of your printer environment.

Do you know how many printers you have in your main office, compared to the number of people who sit in the main office?

Reducing the number of devices and using the most efficient models in the right locations can help your school save money.

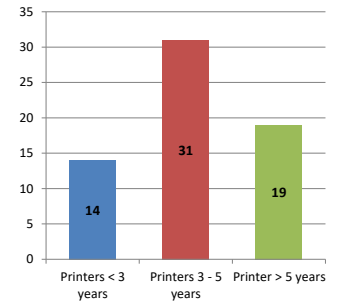
**Chart 2 – Printer Age Statistics**

Here we show the average age of your printers and show the distribution among 3 age categories; under 3 years old, 3-5 years old and over 5 years old.

**Printer Age Statistics**

Average Age (years)	5
Printers < 3 years	14
Printers 3 - 5 years	31
Printer > 5 years	19

**Printer Age Statistics**



The age of your printer fleet plays a large role in your annual printer maintenance and toner cost. The DOE only supports printers 6 years and younger.

Once the warranty expires and the age of your device exceeds 6 years, maintenance and repairs become very costly.

New printers have higher toner yields than older printers, resulting in lower cost per page which saves money.

Newer printers are Energy Star compliant and have advanced eco settings which help reduce energy usage and saves money.

**Glossary**

B/W - Black and White Printing Only

Color - Color or Black and White Printing

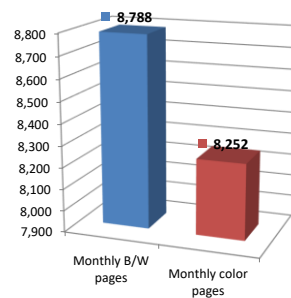
Duplex - Printing on both sides of the paper.

Simplex - Single Sided Printing

### Chart 3 – Volume of Pages Printed

This provides your printed page volumes for the previous month for both B/W and color print jobs. In addition, a utilization percentage is calculated by comparing your print volume for each printer to the maximum monthly volume capacity for that printer model.

Color/Mono Pages Printed



**Volume of pages printed**

Monthly B/W pages	8,788
Monthly color pages	8,252
Total monthly pages	17,040
Color page %	48%
Utilization %	3%

[Do you know if all of your printers are being used and how much?](#)

**Knowing where volumes are created helps identify areas for consolidation and helps you select the most efficient printers for replacement.**

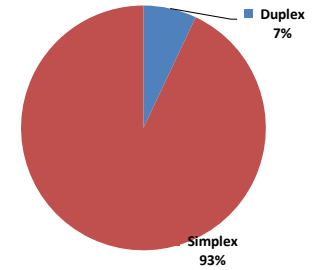
[Are you printing a large amount of color volume?](#)

**Controlling color volume, which typically costs more than black and white, can help your school save money.**

### Chart 4 – Duplex Breakdown

This section shows the percentage of duplexed (double-sided) pages printed along with your duplex opportunity. Duplex opportunity is the total number of pages that could be printed duplex and does not include single page documents. Keep in mind, only the newer printers report duplex statistics. The duplex opportunity shows the prior month's print volume, from the printers with duplex statistics, that could have been duplexed.

Duplex Vs. Simplex



**Duplex breakdown**

Duplex opportunity	3,706
Duplex	7%

[Did you know that your printers are able to print on both back and front of the page?](#)

**Increasing your school's use of double sided printing helps reduce your environmental impact and will help your school save money.**

[The average duplex rate for the NYC DOE is 14%](#)

**A modest improvement in duplex of 10% would reduce the carbon footprint by over 435,000 pounds of CO<sub>2</sub> per year, and save the DOE over \$78,000 in paper costs annually.**

[Lexmark printers 6 years and younger all have duplex capability. The following duplex initiatives can reduce paper consumption and save money:](#)

**Setting duplex as your default setting on your printer**

**Educating end users about the benefit of duplex printing.**

[For more information on how the DOE is focused on Sustainability check:](#)

<http://schools.nyc.gov/community/facilities/sustainability/about/>

## Actions you can take to Save your School Money

- Use highest yield toner whenever possible to lower the cost per page.
- Consider replacing printers over 6 years old to optimize eco-friendly printer environment.
- Duplex multiple page documents when possible to reduce paper usage.

**Printer details**

Model	Serial Number	Age in Years	Utilization	ATS Printer	Avg Mono Pages	Avg Color Pages	Avg Monthly Volume
C534n	94188P5	12					

CS510DE	502747946GRGH	3					
CS510DE	502747946GRGD	3					
CS510DE	502747946GRGR	3	6%	200	210	410	
CS510DE	502747946GRGB	3					
CS510DE	502747946GRGP	3					
CS510DE	502747946GRGG	3	2%	40	100	140	
CS510DE	502747946GRHF	3	2%	27	120	147	
CS510DE	502747946GRHT	3	10%	560	125	685	
CS510DE	502745946GP5K	3	11%	147	651	798	
CS510DE	502747946GRHH	3	21%	894	589	1483	
CS510DE	502743945GKV1	3	7%	16	496	512	
CS510DE	502747946GRGF	3					
CS510DE	502748945RXFX	2	17%	524	676	1200	
CS510DE	502743945RB24	2					
CS510DE	502743945GMD3	3	4%	12	259	271	
CS510DE	502745946GP5G	3					
CS510DE	502747946GRHP	3	8%	260	266	526	
CS510DE	502747946GRGT	3					
CS510DE	502747946GRGV	3	1%	1	52	53	
CS510DE	502747946GRGW	3					
CS510DE	502747946GRHB	3	7%	49	407	456	
CS510DE	502747946GRHD	3	19%	389	971	1360	
CS510DE	502747946GRHK	3	3%	27	160	187	
CS510DE	502747946GRHM	3	16%	4	1120	1124	
CS510DE	502747946GRHN	3	0%	1		1	
CS510DE	502747946GRHR	3	1%	11	32	43	
CS510DE	502747946GRHV	3	1%	25	39	64	
CS510DE	502747946GRH0	3	13%	853	81	934	
CS510DE	502747946GRH9	3	6%	43	396	439	
CS622DE	50299010417TY	1					
CS622DE	50299010417T1	1					
CS622DE	50299010417RM	1					
CS622DE	50299010417T3	1	4%	38	350	388	
CS622DE	50299290341PN	0					
CS622DE	50299290341R9	0					
CS622DE	50299290341PC	0					
CS622DE	50299290341RD	0					
CS622DE	50299290341RH	0					
CS622DE	50299290341RM	0					
CX510DE	752739946FMFY	3	23%	Yes	488	1152	1640
E352dn	622Y1RY	12					
E352dn	622Y1RR	12					
E460dn	72HKNH8	9					
E460dn	72HKNMH	9					
E460dn	72HKNM8	9	4%	395		395	
E460dn	72HKNM3	9					
E460dn	72HKNM5	9	0%	10		10	
E460dn	72HKNMB	9					
E460dn	72HKNM0	9					
E460dn	72HKNML	9	7%	704		704	
E460dn	72HKNMD	4	2%	180		180	
E460dn	72HKNFG	9	0%	44		44	
E460dn	72HKNMC	9	0%	30		30	
E460dn	72HKNLW	9					
E460dn	72HKNLZ	9					
E460dn	72HKNHP	9					
E460dn	72HKNM9	9					
E460dn	72HYTHX	5					
E460dn	72HKN9Z	9					
MS810	45146PHH30H9N	4					
MS810	45146PHH30HB9	4					
MX511DHE	70156PHH19HPX	3	23%	Yes	2816		2816
T650n	793YXLP	10					

<< End of Data >>

22K194 - Jan 2020 - Page 3

For more information regarding this snapshot, please contact your Lexmark team

Lexmark Team

CDW Team  
CDW Sales Department – 800-705-4239

Title	Name	E-Mail	Phone
Client Executive	Mindy Maher	<a href="mailto:mmaher@lexmark.com">mmaher@lexmark.com</a>	212-880-2837
Site Operations	Mark Ennis	<a href="mailto:mennis@lexmark.com">mennis@lexmark.com</a>	908-210-3030
Systems Engineer	TBD	TBD	TBD

Title	Name	E-Mail	Phone
Sales Manager	John Skidmore	<a href="mailto:john.skidmore@cdwg.com">john.skidmore@cdwg.com</a>	(866) 687-3187
Sales Operations	Jon Gray	<a href="mailto:jongray@cdw.com">jongray@cdw.com</a>	(203) 851-7133
		<a href="mailto:NYCDOE@cdwg.com">NYCDOE@cdwg.com</a>	