

Please find enclosed a snap shot of your school's printer environment. The printer breakdown and data encompasses only the printers we can see on your network. You may have additional printers that are locally connected (e.g. USB attached), but those are not included in this breakdown.

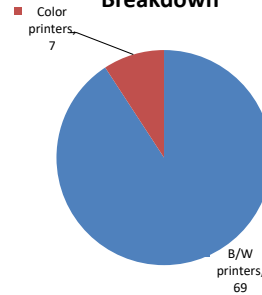
**Chart 1 – School Printer Breakdown**

This provides your school's enrollment, along with the number of printers, including the distribution between B/W and color printers.

**P.S. 197 - The Kings Highway Academy**

Enrollment	856
B/W printers	69
Color printers	7
Total printers	76

**Color/Mono Device Breakdown**



From the list provided on page 3 are all of your printers represented? If not, how many are missing Providing Lexmark the asset data that is missing will allow us to give you a more accurate picture of your printer environment.

Do you know how many printers you have in your main office, compared to the number of people who sit in the main office?

Reducing the number of devices and using the most efficient models in the right locations can help your school save money.

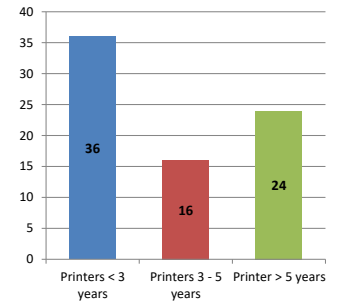
**Chart 2 – Printer Age Statistics**

Here we show the average age of your printers and show the distribution among 3 age categories; under 3 years old, 3-5 years old and over 5 years old.

**Printer Age Statistics**

Average Age (years)	4
Printers < 3 years	36
Printers 3 - 5 years	16
Printer > 5 years	24

**Printer Age Statistics**



The age of your printer fleet plays a large role in your annual printer maintenance and toner cost. The DOE only supports printers 6 years and younger.

Once the warranty expires and the age of your device exceeds 6 years, maintenance and repairs become very costly.

New printers have higher toner yields than older printers, resulting in lower cost per page which saves money.

Newer printers are Energy Star compliant and have advanced eco settings which help reduce energy usage and saves money.

**Glossary**

B/W - Black and White Printing Only

Color - Color or Black and White Printing

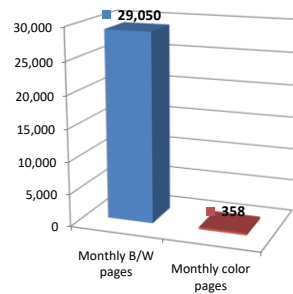
Duplex - Printing on both sides of the paper.

Simplex - Single Sided Printing

### Chart 3 – Volume of Pages Printed

This provides your printed page volumes for the previous month for both B/W and color print jobs. In addition, a utilization percentage is calculated by comparing your print volume for each printer to the maximum monthly volume capacity for that printer model.

Color/Mono Pages Printed



#### Volume of pages printed

Monthly B/W pages	29,050
Monthly color pages	358
Total monthly pages	29,408
Color page %	1%
Utilization %	2%

[Do you know if all of your printers are being used and how much?](#)

**Knowing where volumes are created helps identify areas for consolidation and helps you select the most efficient printers for replacement.**

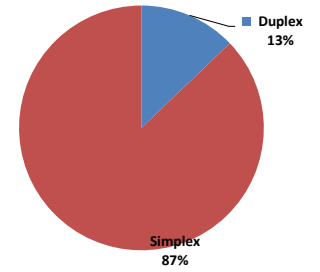
[Are you printing a large amount of color volume?](#)

**Controlling color volume, which typically costs more than black and white, can help your school save money.**

### Chart 4 – Duplex Breakdown

This section shows the percentage of duplexed (double-sided) pages printed along with your duplex opportunity. Duplex opportunity is the total number of pages that could be printed duplex and does not include single page documents. Keep in mind, only the newer printers report duplex statistics. The duplex opportunity shows the prior month's print volume, from the printers with duplex statistics, that could have been duplexed.

Duplex Vs. Simplex



#### Duplex breakdown

Duplex opportunity	8,271
Duplex	13%

[Did you know that your printers are able to print on both back and front of the page?](#)

**Increasing your school's use of double sided printing helps reduce your environmental impact and will help your school save money.**

[The average duplex rate for the NYC DOE is 14%](#)

**A modest improvement in duplex of 10% would reduce the carbon footprint by over 435,000 pounds of CO<sub>2</sub> per year, and save the DOE over \$78,000 in paper costs annually.**

[Lexmark printers 6 years and younger all have duplex capability. The following duplex initiatives can reduce paper consumption and save money:](#)

**Setting duplex as your default setting on your printer**

**Educating end users about the benefit of duplex printing.**

[For more information on how the DOE is focused on Sustainability check:](#)

<http://schools.nyc.gov/community/facilities/sustainability/about/>

## Actions you can take to Save your School Money

- Use highest yield toner whenever possible to lower the cost per page.
- Consider replacing printers over 6 years old to optimize eco-friendly printer environment.
- Duplex multiple page documents when possible to reduce paper usage.

#### Printer details

Model	Serial Number	Age in Years	Utilization	ATS Printer	Avg Mono Pages	Avg Color Pages	Avg Monthly Volume
C534n	9425PHH	13					

C748de	5026289423HY5	4				
CS510de	502751946889W	5	5%	25	353	378
CS510de	5027289466BN2	2				
CX622ADE	7529838140ZGD	1				
CX622ADE	7529838140ZH9	1	0%	1	5	6
CX622ADE	7529845141B33	1				
E460dn	72HGM73	9				
E460dn	72HYD3V	7				
E460dn	72HNMLB	8	16%	1557		1557
E460dn	72HYD3D	7	1%	103		103
E460dn	72HNMLC	8				
E460dn	72HFZBM	9				
E460dn	72HHF89	9				
E460dn	72HFZ2B	9	5%	487		487
E460dn	72HYD3M	7				
E460dn	72HGM7K	9				
E460dn	72HFZ2T	9				
E460dn	72HGM76	9				
E460dn	72HGM75	9				
E460dn	72HGM7H	9				
E460dn	72HGM6W	9				
MS510dn	451455HH26XL1	5				
MS510DN	45147GHH4HNGD	2				
MS510DN	45147GHH4HNG0	2	16%	2187		2187
MS510dn	451457HH2H078	4	7%	1021		1021
MS510dn	451455HH26XRC	5	4%	614		614
MS510DN	45148PHH4P368	2	6%	840		840
MS510dn	451455HH284D9	4	13%	1773		1773
MS510dn	451455HH26XKV	5				
MS510dn	451455HH26XRB	5	2%	311		311
MS510dn	451455HH287W8	4	9%	1197		1197
MS510dn	451455HH26XX3	5	11%	1588		1588
MS510dn	451455HH26XL9	5				
MS510dn	451432HH0TFMG	6	2%	284		284
MS510dn	451432HH0TFNP	6	1%	75		75
MS510dn	451455HH26WYG	5	1%	95		95
MS510dn	451455HH26WYH	5	2%	267		267
MS510dn	451455HH26XL2	5	1%	162		162
MS510DN	45148PHH4P38Y	2				
MS510DN	45148PHH4P37W	2	8%	1178		1178
MS510DN	45148PHH4P38R	2	3%	426		426
MS510dn	451432HH0TFNT	6	7%	946		946
MS510DN	45147GHH4HND0	2	0%	18		18
MS510DN	S45146PHH37163	3				
MS510DN	45147GHH4HNFV	2	5%	659		659
MS510DN	45147GHH4HNGH	2				
MS510DN	45147GHH4HNG9	2	2%	213		213
MS621DN	46008280091C1	1	6%	1260		1260
MS621DN	4600830009TZT	1	1%	298		298
MS621DN	4600830009TZZ	1	5%	1062		1062
MS621DN	4600830009V02	1	3%	609		609
MS621DN	4600830009V04	1	2%	319		319
MS621DN	4600830009V09	1				
MS621DN	4600830009V1B	1	3%	514		514
MS621DN	4600830009V1M	1	1%	299		299
MS621DN	4600830009V1W	1	1%	186		186
MS621DN	4600830009V1Z	1	5%	917		917
MS621DN	4600830009V21	1	1%	288		288
MS621DN	460084900KBGM	1				
MS621DN	460084900KBGN	1	5%	916		916
MS621DN	460084900KBGT	1				
MS621DN	460084900KBH3	1				
MS621DN	460084900KBH4	1				
MS621DN	460084900KBH7	1				

<< More data continued on Next Page >>

22K197 - Jan 2020 - Page 3

### Printer Details - Page 2

Model	Serial Number	Age in Years	Utilization	ATS Printer	Avg Mono Pages	Avg Color Pages	Avg Monthly Volume
MS810	451432HH0TFNL	6	1%		395		395
MS810	50270394513DY	7	0%		27		27
MS810DE	40637C6600Y5P	3					
MS810DE	40637C6600Y63	3					

