

Please find enclosed a snap shot of your school's printer environment. The printer breakdown and data encompasses only the printers we can see on your network. You may have additional printers that are locally connected (e.g. USB attached), but those are not included in this breakdown.

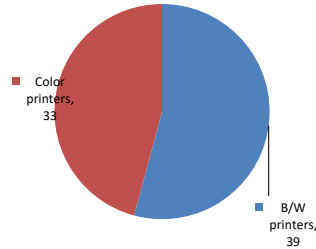
**Chart 1 – School Printer Breakdown**

This provides your school's enrollment, along with the number of printers, including the distribution between B/W and color printers.

**P.S. 206 Joseph F Lamb**

Enrollment	1530
B/W printers	39
Color printers	33
Total printers	72

**Color/Mono Device Breakdown**



From the list provided on page 3 are all of your printers represented? If not, how many are missing Providing Lexmark the asset data that is missing will allow us to give you a more accurate picture of your printer environment.

Do you know how many printers you have in your main office, compared to the number of people who sit in the main office? Reducing the number of devices and using the most efficient models in the right locations can help your school save money.

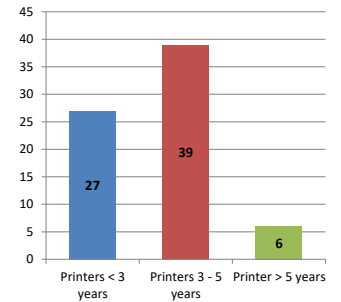
**Chart 2 – Printer Age Statistics**

Here we show the average age of your printers and show the distribution among 3 age categories; under 3 years old, 3-5 years old and over 5 years old.

**Printer Age Statistics**

Average Age (years)	3
Printers < 3 years	27
Printers 3 - 5 years	39
Printer > 5 years	6

**Printer Age Statistics**



The age of your printer fleet plays a large role in your annual printer maintenance and toner cost. The DOE only supports printers 6 years and younger.

Once the warranty expires and the age of your device exceeds 6 years, maintenance and repairs become very costly.

New printers have higher toner yields than older printers, resulting in lower cost per page which saves money.

Newer printers are Energy Star compliant and have advanced eco settings which help reduce energy usage and saves money.

**Glossary**

B/W - Black and White Printing Only

Color - Color or Black and White Printing

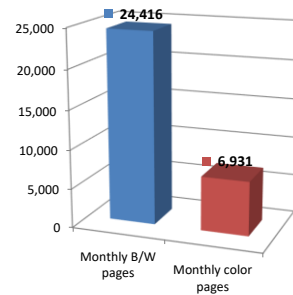
Duplex - Printing on both sides of the paper.

Simplex - Single Sided Printing

### Chart 3 – Volume of Pages Printed

This provides your printed page volumes for the previous month for both B/W and color print jobs. In addition, a utilization percentage is calculated by comparing your print volume for each printer to the maximum monthly volume capacity for that printer model.

Color/Mono Pages Printed



**Volume of pages printed**

Monthly B/W pages	24,416
Monthly color pages	6,931
Total monthly pages	31,347
Color page %	22%
Utilization %	3%

[Do you know if all of your printers are being used and how much?](#)

**Knowing where volumes are created helps identify areas for consolidation and helps you select the most efficient printers for replacement.**

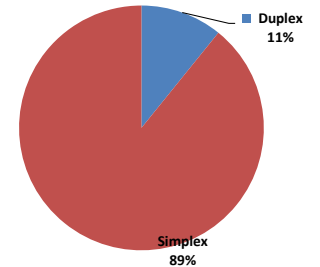
[Are you printing a large amount of color volume?](#)

**Controlling color volume, which typically costs more than black and white, can help your school save money.**

### Chart 4 – Duplex Breakdown

This section shows the percentage of duplexed (double-sided) pages printed along with your duplex opportunity. Duplex opportunity is the total number of pages that could be printed duplex and does not include single page documents. Keep in mind, only the newer printers report duplex statistics. The duplex opportunity shows the prior month's print volume, from the printers with duplex statistics, that could have been duplexed.

Duplex Vs. Simplex



**Duplex breakdown**

Duplex opportunity	6,230
Duplex	11%

[Did you know that your printers are able to print on both back and front of the page?](#)

**Increasing your school's use of double sided printing helps reduce your environmental impact and will help your school save money.**

[The average duplex rate for the NYC DOE is 14%](#)

**A modest improvement in duplex of 10% would reduce the carbon footprint by over 435,000 pounds of CO<sub>2</sub> per year, and save the DOE over \$78,000 in paper costs annually.**

[Lexmark printers 6 years and younger all have duplex capability. The following duplex initiatives can reduce paper consumption and save money:](#)

**Setting duplex as your default setting on your printer**

**Educating end users about the benefit of duplex printing.**

[For more information on how the DOE is focused on Sustainability check:](#)

<http://schools.nyc.gov/community/facilities/sustainability/about/>

## Actions you can take to Save your School Money

- Use highest yield toner whenever possible to lower the cost per page.
- Consider replacing printers over 6 years old to optimize eco-friendly printer environment.
- Duplex multiple page documents when possible to reduce paper usage.

**Printer details**

Model	Serial Number	Age in Years	Utilization	ATS Printer	Avg Mono Pages	Avg Color Pages	Avg Monthly Volume
C736dn	944273X	9					

CS510de	502726946BTN7	4	25%	787	928	1715
CS510de	502726946BTMZ	4				
CS510de	502726946BTNF	4				
CS510DE	502730946FG06	3	6%	409	5	414
CS510de	502726946BTN9	4	11%	636	112	748
CS510de	502726946BTNC	4	19%	683	655	1338
CS510DE	502743945GM91	3				
CS622DE	502982904OFMB	1	2%	9	169	178
CS622DE	502982904OFLX	1	1%	46	56	102
CS622DE	502982904OFLP	1	3%	250	31	281
CS622DE	502982904OFLT	1	2%	63	120	183
CS622DE	502982904FRG	1	5%	524	13	537
CS622DE	50298190405RB	1				
CS622DE	5029829040GOV	1				
CS622DE	5029829040FMZ	1	2%	77	112	189
CS622DE	5029829040FMH	1	1%	21	70	91
CS622DE	5029829040FMF	1				
CS622DE	5029829040FRP	1	27%	1165	1575	2740
CS622DE	5029845040Y20	1				
CS622DE	5029903041BNB	0				
CS622DE	5029903041BP3	0	6%	248	322	570
CS622DE	5029903041BNV	0				
CS622DE	50299230337ZT	0				
CX510DE	752735946P0ZF	2	24%	862	796	1658
CX510DE	752735946P0ZV	2	22%	61	1512	1573
CX510DE	752735946P0YF	2	7%	98	395	493
CX622ADE	752981304011N	1	10%	921	60	981
CX622ADE	7529845141B9B	1				
CX622ADE	7529901141PCM	1				
CX622ADE	75299081427NM	0				
CX622ADE	75299081427V4	0				
CX622ADE	7529845141BB5	0				
E360dn	72M26BY	11				
E460dn	72HB9W2	4				
LaserjetP2055	CNB9015771	4	21%	617		617
LaserjetP2055	CNB9314243	10	12%	358		358
M810de Low Volt	4063369904653	7				
MS510dn	451443HH14HZN	6				
MS510DN	45146PHH3B81X	3				
MS510dn	45145PHH2HB4X	4	6%	772		772
MS510dn	45145PHH2HB4Z	4	1%	138		138
MS510dn	45145PHH2HB4D	4				
MS510dn	45145PHH2HBFT	4				
MS510dn	45145PHH2HB3N	4	2%	298		298
MS510dn	45145PHH2HBDN	4				
MS510dn	45145PHH2HBFM	4	2%	225		225
MS510dn	45145PHH2HBFH	4	1%	187		187
MS510DN	45146PHH37TDG	3	12%	1731		1731
MS510dn	45145PHH2HBBP	4	14%	1974		1974
MS510dn	45145PHH2HBF8	4	0%	64		64
MS510dn	45145PHH2HBF9	4	1%	174		174
MS510dn	45145PHH2HB3Z	4				
MS510dn	45145PHH2HBF3	4				
MS510dn	45145PHH2HBF4	4	15%	2085		2085
MS510dn	45145PHH2HBFH	4	1%	156		156
MS510dn	45145PHH2HBF9	4	0%	30		30
MS510dn	45145PHH2HBF6	4	5%	720		720
MS510dn	45145PHH2HB4R	4				
MS510dn	45145PHH2HB4P	4				
MS510DN	45146PHH3DGX2	3	3%	432		432
MS510dn	45145PHH2HBF1	4				
MS510DN	45146PHH3K8PF	3	1%	125		125
MS510DN	45146PHH37TBH	3				
MS510DN	45146PHH3K8DT	3				

<< More data continued on Next Page >>

22K206 - Jan 2020 - Page 3

### Printer Details - Page 2

Model	Serial Number	Age in Years	Utilization	ATS Printer	Avg Mono Pages	Avg Color Pages	Avg Monthly Volume
MS810	45145PHH2HB8W	4	2%		1531		1531
MS810	45145PHH2HBF8	4	4%		2735		2735
MS810DE	40636C66046RP	3	1%		113		113
MS810de	40635C6604LX4	4	8%		1601		1601

