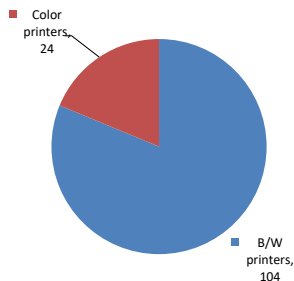


Please find enclosed a snap shot of your school's printer environment. The printer breakdown and data encompasses only the printers we can see on your network. You may have additional printers that are locally connected (e.g. USB attached), but those are not included in this breakdown.

Chart 1 – School Printer Breakdown

This provides your school's enrollment, along with the number of printers, including the distribution between B/W and color printers.

Color/Mono Device Breakdown



P.S. 217 Colonel David Marcus School

Enrollment	1122
B/W printers	104
Color printers	24
Total printers	128

From the list provided on page 3 are all of your printers represented? If not, how many are missing Providing Lexmark the asset data that is missing will allow us to give you a more accurate picture of your printer environment.

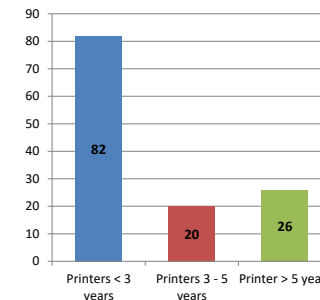
Do you know how many printers you have in your main office, compared to the number of people who sit in the main office?

Reducing the number of devices and using the most efficient models in the right locations can help your school save money.

Chart 2 – Printer Age Statistics

Here we show the average age of your printers and show the distribution among 3 age categories; under 3 years old, 3-5 years old and over 5 years old.

Printer Age Statistics



Printer Age Statistics

Average Age (years)	3
Printers < 3 years	82
Printers 3 - 5 years	20
Printer > 5 years	26

The age of your printer fleet plays a large role in your annual printer maintenance and toner cost. The DOE only supports printers 6 years and younger.

Once the warranty expires and the age of your device exceeds 6 years, maintenance and repairs become very costly.

New printers have higher toner yields than older printers, resulting in lower cost per page which saves money.

Newer printers are Energy Star compliant and have advanced eco settings which help reduce energy usage and saves money.

Glossary

B/W - Black and White Printing Only

Color - Color or Black and White Printing

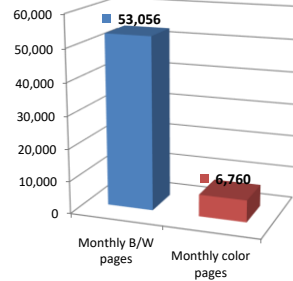
Duplex - Printing on both sides of the paper.

Simplex - Single Sided Printing

Chart 3 – Volume of Pages Printed

This provides your printed page volumes for the previous month for both B/W and color print jobs. In addition, a utilization percentage is calculated by comparing your print volume for each printer to the maximum monthly volume capacity for that printer model.

Color/Mono Pages Printed



Volume of pages printed

Monthly B/W pages	53,056
Monthly color pages	6,760
Total monthly pages	59,816
Color page %	11%
Utilization %	4%

[Do you know if all of your printers are being used and how much?](#)

Knowing where volumes are created helps identify areas for consolidation and helps you select the most efficient printers for replacement.

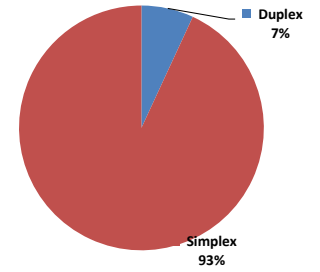
[Are you printing a large amount of color volume?](#)

Controlling color volume, which typically costs more than black and white, can help your school save money.

Chart 4 – Duplex Breakdown

This section shows the percentage of duplexed (double-sided) pages printed along with your duplex opportunity. Duplex opportunity is the total number of pages that could be printed duplex and does not include single page documents. Keep in mind, only the newer printers report duplex statistics. The duplex opportunity shows the prior month's print volume, from the printers with duplex statistics, that could have been duplexed.

Duplex Vs. Simplex



Duplex breakdown

Duplex opportunity	9,085
Duplex	7%

[Did you know that your printers are able to print on both back and front of the page?](#)

Increasing your school's use of double sided printing helps reduce your environmental impact and will help your school save money.

[The average duplex rate for the NYC DOE is 14%](#)

A modest improvement in duplex of 10% would reduce the carbon footprint by over 435,000 pounds of CO₂ per year, and save the DOE over \$78,000 in paper costs annually.

[Lexmark printers 6 years and younger all have duplex capability. The following duplex initiatives can reduce paper consumption and save money:](#)

Setting duplex as your default setting on your printer

Educating end users about the benefit of duplex printing.

[For more information on how the DOE is focused on Sustainability check: <http://schools.nyc.gov/community/facilities/sustainability/about/>](#)

Actions you can take to Save your School Money

- Use highest yield toner whenever possible to lower the cost per page.
- Consider replacing printers over 6 years old to optimize eco-friendly printer environment.
- Duplex multiple page documents when possible to reduce paper usage.

Printer details

Model	Serial Number	Age in Years	Utilization	ATS Printer	Avg Mono Pages	Avg Color Pages	Avg Monthly Volume
C534n	942FW5H	11					

C534n	941FXNW	11					
C544dn	9469CPN	8					
C748de	5026029422W6K	6	2%		58	139	197
C748de	5026029422W6W	6					
CS510DE	502748945RXB3	2					
CS510DE	502748945RX9Y	2					
CS622DE	5029908041L95	1	2%		127	96	223
CS622DE	5029908041L99	1	3%		109	177	286
CS622DE	50299290341RY	0	1%		26	65	91
CS622DE	50299290341R5	0					
CS622DE	50299150325CV	0					
CX510de	752703946BD3	4					
CX510DE	752741946FT2P	3					
CX510DE	752731946DVI3	3					
CX510DE	752708946HCOR	3					
CX510DE	752708946HC23	3					
CX510DE	752708946HC2G	3					
CX622ADE	7529829140HHT	1	60%		1250	4767	6017
CX622ADE	7529845141B9N	1					
CX725DHE	7528625010C8D	3	13%	Yes	1038	1516	2554
E342n	6206L4P	13					
E460dn	72HH49V	9					
E460dn	72HH49Z	9					
E460dn	72HFHTW	9					
E460dn	72HFHV9	9					
E460dn	72HH47V	9					
E460dn	72HFHVF	9	3%		277		277
E460dn	72HFHV8	9					
E460dn	72HFHTT	9					
E460dn	72HFHTF	9					
E460dn	72HGM79	9					
E460dn	72HFHVD	9					
LaserjetP2055	CNB9N96924	10					
LaserjetP2055	CNB9N96922	10					
MS510DN	45148GHH4MK6K	2					
MS510DN	45148GHH4MK7B	2					
MS510DN	45148GHH4MK6T	2	0%		2		2
MS510dn	45146PHH2X3RL	4					
MS510dn	45146PHH2X3T4	4					
MS510dn	451444HH18X5D	6					
MS510dn	45146PHH2X3RM	4					
MS510dn	451444HH18X50	6					
MS510dn	451444HH18X66	6					
MS510DN	45147GHH4K6C3	2					
MS510DN	45147GHH4H1BC	2					
MS510DN	45147GHH4H1B7	2					
MS510DN	45147GHH4H1BX	2					
MS510DN	45147GHH4H1C6	2					
MS510DN	45148GHH4MK6W	2					
MS510DN	45148GHH4MK75	2					
MS510DN	45147GHH4H1B0	2					
MS510DN	45147GHH4H1BV	2	3%		466		466
MS510DN	45147GHH4HN9Z	2	5%		680		680
MS510DN	45147GHH4H1C0	2	4%		491		491
MS510DN	45147GHH4H1C9	2	8%		1052		1052
MS510DN	45147GHH4H1BF	2	3%		440		440
MS510DN	45147GHH4H1B6	2	16%		2211		2211
MS510DN	45147GHH4H1BP	2	6%		830		830
MS510DN	45147GHH4H1BR	2	4%		551		551
MS510DN	45147GHH4H1BW	2	19%		2717		2717
MS510DN	45147GHH4H1BZ	2					
MS510DN	45147GHH4H1BK	2	2%		342		342
MS510DN	45147GHH4H1BN	2	4%		519		519
MS510DN	45147GHH4H1BY	2	5%		711		711

<< More data continued on Next Page >>

22K217 - Jan 2020 - Page 3

Printer Details - Page 2

Model	Serial Number	Age in Years	Utilization	ATS Printer	Avg Mono Pages	Avg Color Pages	Avg Monthly Volume
MS510DN	45147GHH4H1C2	2	29%		4079		4079
MS510DN	45148GHH4MK6Y	2					
MS510DN	45148GHH4MK73	2					
MS510DN	45148GHH4MK74	2					

MS510DN	45148GHH4MK79	2	0%	3	3
MS510DN	45148GHH4MK7G	2			
MS621DN	460090730NN55	0			
MS810DE	40638D6600HGL	2			
MS810DE	40638D6600HF7	2			
MS810DE	40638D6600HGR	2			
MX410DE	70157GLM1V1CF	2			
MX410DE	70157GLM1V1BR	2	2%	211	211
MX410DE	70157GLM1V1C9	2	17%	1654	1654
MX410DE	70158GLM1W2LR	2	4%	389	389
MX410DE	70157GLM1V18K	2	2%	224	224
MX410DE	70158GLM1W2LX	2	13%	1275	1275
MX410DE	70156PLM18NGM	3	16%	1640	1640
MX410DE	70157GLM1V1C3	2			
MX410DE	70157GLM1V1C2	2			
MX410DE	70157GLM1V1BN	2	7%	720	720
MX410DE	70156PLM1BWT1	3	12%	1216	1216
MX410DE	70157GLM1V1C4	2			
MX410DE	70158GLM1W2MT	2	9%	901	901
MX410DE	70157GLM1MOLD	2	14%	1405	1405
MX410DE	70156PLM18NGB	3	17%	1697	1697
MX410DE	70156PLM18NGC	3			
MX410DE	70157GLM1MORY	2	9%	873	873
MX410de	70155PLM0ZM84	4	11%	1103	1103
MX410DE	70157GLM1V1CR	2	1%	128	128
MX410DE	70157GLM1V1B8	2	16%	1577	1577
MX410DE	70157GLM1M0PW	2	8%	752	752
MX410DE	70158GLM1W2LT	2	11%	1086	1086
MX410DE	70156PLM16Z5K	3			
MX410DE	70157GLM1V1CM	2	4%	375	375
MX410DE	70158GLM1W2HT	2	19%	1909	1909
MX410DE	70157GLM1V19R	2			
MX410DE	70157GLM1V1CP	2	23%	2308	2308
MX410DE	70157GLM1MOLF	2	8%	799	799
MX410DE	70157GLM1L5YZ	2	9%	912	912
MX410DE	70156PLM18NG2	3	14%	1424	1424
MX410DE	70157GLM1V1C5	2	10%	1049	1049
MX410DE	70156PLM18NGZ	3	17%	1681	1681
MX410DE	70156PLM18NGR	3			
MX410DE	70156PLM18NGT	3			
MX410DE	70156PLM18NCD	3			
MX410DE	70156PLM18NH1	3			
MX410DE	70157GLM1L5Z8	2	12%	1162	1162

<< Data is Truncated >>

For more information regarding this snapshot, please contact your Lexmark team

Lexmark Team

Title	Name	E-Mail	Phone
Client Executive	Mindy Maher	mmaher@lexmark.com	212-880-2837
Site Operations	Mark Ennis	mennis@lexmark.com	908-210-3030
Systems Engineer	TBD	TBD	TBD

CDW Team

CDW Sales Department – 800-705-4239

Title	Name	E-Mail	Phone
Sales Manager	John Skidmore	john.skidmore@cdwg.com	(866) 687-3187
Sales Operations	Jon Gray	jongray@cdw.com	(203) 851-7133
		NYCDOE@cdwg.com	