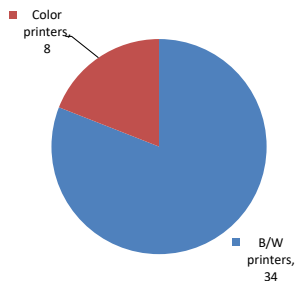


Please find enclosed a snap shot of your school's printer environment. The printer breakdown and data encompasses only the printers we can see on your network. You may have additional printers that are locally connected (e.g. USB attached), but those are not included in this breakdown.

Chart 1 – School Printer Breakdown

This provides your school's enrollment, along with the number of printers, including the distribution between B/W and color printers.

Color/Mono Device Breakdown



High School for Environmental Studies

Enrollment	1145
B/W printers	34
Color printers	8
Total printers	42

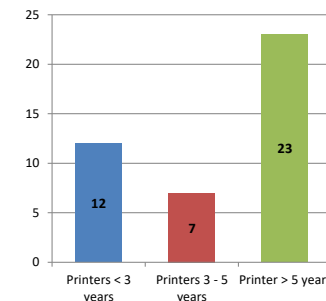
From the list provided on page 3 are all of your printers represented? If not, how many are missing Providing Lexmark the asset data that is missing will allow us to give you a more accurate picture of your printer environment.

Do you know how many printers you have in your main office, compared to the number of people who sit in the main office? Reducing the number of devices and using the most efficient models in the right locations can help your school save money.

Chart 2 – Printer Age Statistics

Here we show the average age of your printers and show the distribution among 3 age categories; under 3 years old, 3-5 years old and over 5 years old.

Printer Age Statistics



Printer Age Statistics

Average Age (years)	6
Printers < 3 years	12
Printers 3 - 5 years	7
Printer > 5 years	23

The age of your printer fleet plays a large role in your annual printer maintenance and toner cost. The DOE only supports printers 6 years and younger.

Once the warranty expires and the age of your device exceeds 6 years, maintenance and repairs become very costly.

New printers have higher toner yields than older printers, resulting in lower cost per page which saves money.

Newer printers are Energy Star compliant and have advanced eco settings which help reduce energy usage and saves money.

Glossary

B/W - Black and White Printing Only

Color - Color or Black and White Printing

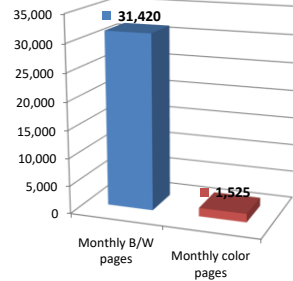
Duplex - Printing on both sides of the paper.

Simplex - Single Sided Printing

Chart 3 – Volume of Pages Printed

This provides your printed page volumes for the previous month for both B/W and color print jobs. In addition, a utilization percentage is calculated by comparing your print volume for each printer to the maximum monthly volume capacity for that printer model.

Color/Mono Pages Printed



Volume of pages printed

Monthly B/W pages	31,420
Monthly color pages	1,525
Total monthly pages	32,945
Color page %	5%
Utilization %	5%

[Do you know if all of your printers are being used and how much?](#)

Knowing where volumes are created helps identify areas for consolidation and helps you select the most efficient printers for replacement.

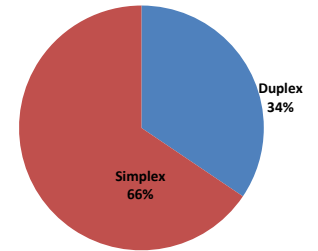
[Are you printing a large amount of color volume?](#)

Controlling color volume, which typically costs more than black and white, can help your school save money.

Chart 4 – Duplex Breakdown

This section shows the percentage of duplexed (double-sided) pages printed along with your duplex opportunity. Duplex opportunity is the total number of pages that could be printed duplex and does not include single page documents. Keep in mind, only the newer printers report duplex statistics. The duplex opportunity shows the prior month's print volume, from the printers with duplex statistics, that could have been duplexed.

Duplex Vs. Simplex



Duplex breakdown

Duplex opportunity	3,880
Duplex	34%

[Did you know that your printers are able to print on both back and front of the page?](#)

Increasing your school's use of double sided printing helps reduce your environmental impact and will help your school save money.

[The average duplex rate for the NYC DOE is 14%](#)

A modest improvement in duplex of 10% would reduce the carbon footprint by over 435,000 pounds of CO₂ per year, and save the DOE over \$78,000 in paper costs annually.

[Lexmark printers 6 years and younger all have duplex capability. The following duplex initiatives can reduce paper consumption and save money:](#)

Setting duplex as your default setting on your printer

Educating end users about the benefit of duplex printing.

[For more information on how the DOE is focused on Sustainability check:](#)

<http://schools.nyc.gov/community/facilities/sustainability/about/>

Actions you can take to Save your School Money

Use highest yield toner whenever possible to lower the cost per page.
 Consider replacing printers over 6 years old to optimize eco-friendly printer environment.
 Duplex multiple page documents when possible to reduce paper usage.

Printer details

Model	Serial Number	Age in Years	Utilization	ATS Printer	Avg Mono Pages	Avg Color Pages	Avg Monthly Volume
CS622DE	5029829040FL8	1	3%		106	234	340

CS622DE	5029845040Y3P	1					
CS622DE	5029845040Y44	1	12%		421	744	1165
CS622DE	5029907041KTL	0					
CS622DE	5029907041KTZ	0					
CX510DE	752736946P2XP	2	50%	Yes	2924	547	3471
CX510DE	752734946F44Y	3					
E460dw	72HGYN7	9					
E460dw	72HGYV5	9					
E460dw	72HGZ0L	9	17%		1705		1705
MS510DN	45146PHH370X6	3	8%		1069		1069
MS510dn	451455HH26X6M	5					
MS510dn	451430HH06XV5	7	2%		294		294
MS510DN	45146PHH37TKC	3					
MS510dn	451443HH14K4F	6	4%		506		506
MS510dn	451420HH05YD2	7					
MS810	451455HH26X8M	5					
MS810	502730946FFWH	3					
MX421ADE	70179012084BP	1					
MX421ADE	70179012084BV	1					
MX421ADE	70179012084B5	1					
MX421ADE	7017901208468	1					
MX511DHE	70157GHH1NL77	2	48%	Yes	5818		5818
MX511DHE	70156PHH18YVM	3	3%	Yes	414		414
MX511DHE	70157GHH1N7FM	2					
T640n	790BTK5	10					
T650dn	79493HN	10	6%		1186		1186
T650n	793YWGZ	10					
T650n	79493WG	10	16%		3261		3261
T650n	794L0M7	9	18%		3510		3510
T650n	794L0LV	9					
T650n	794L0KN	9					
T650n	793T1H4	9		Yes			
T650n	794L0LR	9	12%		2483		2483
T650n	794L0LF	9	2%		318		318
T650n	794L0M5	9	8%	Yes	1543		1543
T650n	794L0KC	9	11%		2179		2179
T650n	794BHHX	9		Yes			
T650n	793XKDM	10	18%	Yes	3683		3683
T650n	794L0M3	9					
X544n	94F8P5Z	7					
X656de	79G17LG	9		Yes			

<< End of Data >>

For more information regarding this snapshot, please contact your Lexmark team

Lexmark Team

CDW Team
CDW Sales Department – 800-705-4239

Title	Name	E-Mail	Phone
Client Executive	Mindy Maher	mmaher@lexmark.com	212-880-2837
Site Operations	Mark Ennis	mennis@lexmark.com	908-210-3030
Systems Engineer	TBD	TBD	TBD

Title	Name	E-Mail	Phone
Sales Manager	John Skidmore	john.skidmore@cdwg.com	(866) 687-3187
Sales Operations	Jon Gray	jongray@cdw.com	(203) 851-7133
		NYCDOE@cdwg.com	