

Please find enclosed a snap shot of your school's printer environment. The printer breakdown and data encompasses only the printers we can see on your network. You may have additional printers that are locally connected (e.g. USB attached), but those are not included in this breakdown.

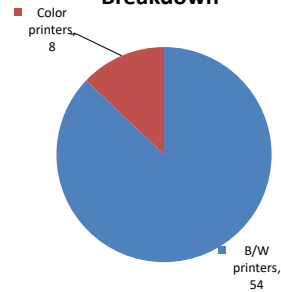
Chart 1 – School Printer Breakdown

This provides your school's enrollment, along with the number of printers, including the distribution between B/W and color printers.

The High School Of Fashion Industries

Enrollment	1607
B/W printers	54
Color printers	8
Total printers	62

Color/Mono Device Breakdown



From the list provided on page 3 are all of your printers represented? If not, how many are missing Providing Lexmark the asset data that is missing will allow us to give you a more accurate picture of your printer environment.

Do you know how many printers you have in your main office, compared to the number of people who sit in the main office? Reducing the number of devices and using the most efficient models in the right locations can help your school save money.

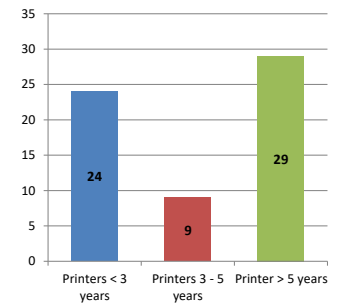
Chart 2 – Printer Age Statistics

Here we show the average age of your printers and show the distribution among 3 age categories; under 3 years old, 3-5 years old and over 5 years old.

Printer Age Statistics

Average Age (years)	5
Printers < 3 years	24
Printers 3 - 5 years	9
Printer > 5 years	29

Printer Age Statistics



The age of your printer fleet plays a large role in your annual printer maintenance and toner cost. The DOE only supports printers 6 years and younger.

Once the warranty expires and the age of your device exceeds 6 years, maintenance and repairs become very costly.

New printers have higher toner yields than older printers, resulting in lower cost per page which saves money.

Newer printers are Energy Star compliant and have advanced eco settings which help reduce energy usage and saves money.

Glossary

B/W - Black and White Printing Only

Color - Color or Black and White Printing

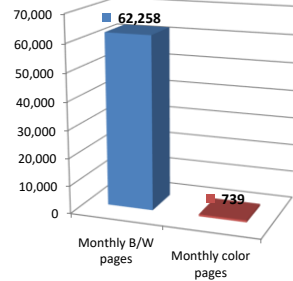
Duplex - Printing on both sides of the paper.

Simplex - Single Sided Printing

Chart 3 – Volume of Pages Printed

This provides your printed page volumes for the previous month for both B/W and color print jobs. In addition, a utilization percentage is calculated by comparing your print volume for each printer to the maximum monthly volume capacity for that printer model.

Color/Mono Pages Printed



Volume of pages printed

Monthly B/W pages	62,258
Monthly color pages	739
Total monthly pages	62,997
Color page %	1%
Utilization %	7%

[Do you know if all of your printers are being used and how much?](#)

Knowing where volumes are created helps identify areas for consolidation and helps you select the most efficient printers for replacement.

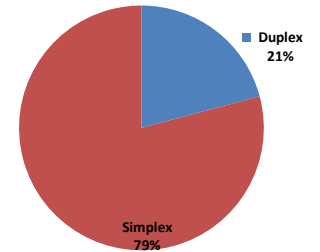
[Are you printing a large amount of color volume?](#)

Controlling color volume, which typically costs more than black and white, can help your school save money.

Chart 4 – Duplex Breakdown

This section shows the percentage of duplexed (double-sided) pages printed along with your duplex opportunity. Duplex opportunity is the total number of pages that could be printed duplex and does not include single page documents. Keep in mind, only the newer printers report duplex statistics. The duplex opportunity shows the prior month's print volume, from the printers with duplex statistics, that could have been duplexed.

Duplex Vs. Simplex



Duplex breakdown

Duplex opportunity	9,109
Duplex	21%

[Did you know that your printers are able to print on both back and front of the page?](#)

Increasing your school's use of double sided printing helps reduce your environmental impact and will help your school save money.

[The average duplex rate for the NYC DOE is 14%](#)

A modest improvement in duplex of 10% would reduce the carbon footprint by over 435,000 pounds of CO₂ per year, and save the DOE over \$78,000 in paper costs annually.

[Lexmark printers 6 years and younger all have duplex capability. The following duplex initiatives can reduce paper consumption and save money:](#)

Setting duplex as your default setting on your printer

Educating end users about the benefit of duplex printing.

[For more information on how the DOE is focused on Sustainability check:](#)

<http://schools.nyc.gov/community/facilities/sustainability/about/>

Actions you can take to Save your School Money

- Use highest yield toner whenever possible to lower the cost per page.
- Consider replacing printers over 6 years old to optimize eco-friendly printer environment.
- Duplex multiple page documents when possible to reduce paper usage.

Printer details

Model	Serial Number	Age in Years	Utilization	ATS Printer	Avg Mono Pages	Avg Color Pages	Avg Monthly Volume
CX510de	5027329456P87	5	6%		117	290	407

CX510de	7527039463X8N	6					
CX510de	50271294653Y8	4	1%		9	66	75
CX510de	7527059467HZB	5	9%		231	383	614
CX622ADE	75299081427P3	0					
CX622ADE	75299081427VP	0					
E32x SVCE322	722L9H3	14					
E360dn	72M1GB7	11					
E460dn	72HP0ZB	8					
E460dn	72HNMLW	8					
E460dn	72HNMLK	8					
E460dn	72HNMM6	8					
LaserjetP2055	CNB9N80482	10	4%		117		117
LaserjetP2055	CNB9925895	10					
LaserjetP2055	CNB9925911	10	5%		146		146
LaserjetP2055	CNB9P91147	10					
LaserjetP2055	CNB9925904	10	0%		14		14
MS510DN	45147GHH4D7PD	2	1%		107		107
MS510dn	451445HH2118C	5					
MS510dn	451455HH26WY5	4					
MS510dn	45145PHH2VY28	4	2%		317		317
MS510DN	45148PHH4P31L	2	0%		45		45
MS510DN	45148PHH4P31W	2	4%		549		549
MS510dn	451455HH26XM7	5					
MS510DN	45147GHH3TL9F	3	12%		1732		1732
MS510DN	45147GHH3TL9G	3	5%		669		669
MS510DN	45148PHH4P38T	2					
MS510DN	45148PHH4P7B4	2	6%		836		836
MS510DN	45148PHH4P2VC	2	3%		461		461
MS510DN	45148PHH4P2V7	2	3%		446		446
MS510DN	45148PHH4P2XG	2	8%		1146		1146
MS510DN	45148PHH4P2X7	2	7%		943		943
MS621DN	460090200LVRR	1					
MS621DN	460090200LWDF	1					
MS621DN	460084900K71K	1					
MS621DN	460084900K71X	1	0%		92		92
MS621DN	460084900K71Z	1	0%		29		29
MS810DE	40636C6604LGK	3	12%		2421		2421
MS810de	406336990D91M	6	41%	Yes	8103		8103
MS810de	40635C6606ML2	4	24%	Yes	4789		4789
MS810DE	40636C66046TM	3	37%	Yes	7452		7452
MS810DE	40637C66027MK	2	40%	Yes	8017		8017
MS810de	4063369904DVT	7	4%	Yes	880		880
MS810de	406347990PB7Z	5	0%	Yes	55		55
MS810de	4063369904DXN	7	35%	Yes	6908		6908
MS810de	4063369908T5D	6	22%	Yes	4491		4491
MS822DE	4064912015K4L	0					
MX410DE	70157GLM1P28M	2	3%		336		336
MX421ADE	70179012084BD	1					
MX421ADE	70179012084C6	1					
MX711dhe	74635C6600GYG	4	37%	Yes	9312		9312
MX711dhe	7463479906PH3	5		Yes			
T630	991MGDV	16					
T640	790PN76	13					
T650n	79493LB	10					
T650n	794DVHP	9	5%		983		983
T650n	794DVK7	9					
T650n	794V551	8	3%	Yes	505		505
X544dw	94F8VYX	7					
X544n	94F8PGZ	7					
X656de	79G267G	8		Yes			
X748de	7526159441C91	4					

<< End of Data >>

For more information regarding this snapshot, please contact your Lexmark team

Lexmark Team

CDW Team
CDW Sales Department – 800-705-4239

Title	Name	E-Mail	Phone
Client Executive	Mindy Maher	mmaher@lexmark.com	212-880-2837
Site Operations	Mark Ennis	mennis@lexmark.com	908-210-3030
Systems Engineer	TBD	TBD	TBD

Title	Name	E-Mail	Phone
Sales Manager	John Skidmore	john.skidmore@cdwg.com	(866) 687-3187
Sales Operations	Jon Gray	jongray@cdw.com	(203) 851-7133
		NYCDOE@cdwg.com	