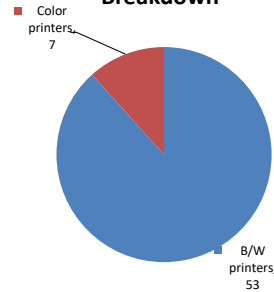


Please find enclosed a snap shot of your school's printer environment. The printer breakdown and data encompasses only the printers we can see on your network. You may have additional printers that are locally connected (e.g. USB attached), but those are not included in this breakdown.

Chart 1 – School Printer Breakdown

This provides your school's enrollment, along with the number of printers, including the distribution between B/W and color printers.

Color/Mono Device Breakdown



J.H.S. 143 Eleanor Roosevelt

Enrollment	223
B/W printers	53
Color printers	7
Total printers	60

From the list provided on page 3 are all of your printers represented? If not, how many are missing Providing Lexmark the asset data that is missing will allow us to give you a more accurate picture of your printer environment.

Do you know how many printers you have in your main office, compared to the number of people who sit in the main office?

Reducing the number of devices and using the most efficient models in the right locations can help your school save money.

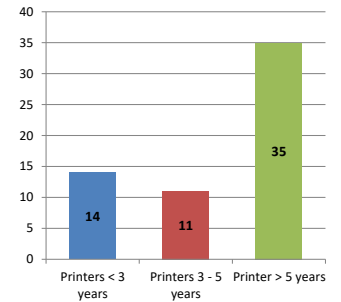
Chart 2 – Printer Age Statistics

Here we show the average age of your printers and show the distribution among 3 age categories; under 3 years old, 3-5 years old and over 5 years old.

Printer Age Statistics

Average Age (years)	5
Printers < 3 years	14
Printers 3 - 5 years	11
Printer > 5 years	35

Printer Age Statistics



The age of your printer fleet plays a large role in your annual printer maintenance and toner cost. The DOE only supports printers 6 years and younger.

Once the warranty expires and the age of your device exceeds 6 years, maintenance and repairs become very costly.

New printers have higher toner yields than older printers, resulting in lower cost per page which saves money.

Newer printers are Energy Star compliant and have advanced eco settings which help reduce energy usage and saves money.

Glossary

B/W - Black and White Printing Only

Color - Color or Black and White Printing

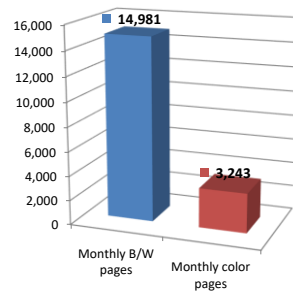
Duplex - Printing on both sides of the paper.

Simplex - Single Sided Printing

Chart 3 – Volume of Pages Printed

This provides your printed page volumes for the previous month for both B/W and color print jobs. In addition, a utilization percentage is calculated by comparing your print volume for each printer to the maximum monthly volume capacity for that printer model.

Color/Mono Pages Printed



Volume of pages printed

Monthly B/W pages	14,981
Monthly color pages	3,243
Total monthly pages	18,224
Color page %	18%
Utilization %	2%

[Do you know if all of your printers are being used and how much?](#)

Knowing where volumes are created helps identify areas for consolidation and helps you select the most efficient printers for replacement.

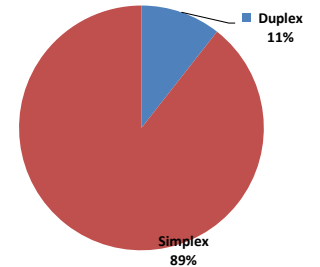
[Are you printing a large amount of color volume?](#)

Controlling color volume, which typically costs more than black and white, can help your school save money.

Chart 4 – Duplex Breakdown

This section shows the percentage of duplexed (double-sided) pages printed along with your duplex opportunity. Duplex opportunity is the total number of pages that could be printed duplex and does not include single page documents. Keep in mind, only the newer printers report duplex statistics. The duplex opportunity shows the prior month's print volume, from the printers with duplex statistics, that could have been duplexed.

Duplex Vs. Simplex



Duplex breakdown

Duplex opportunity	3,813
Duplex	11%

[Did you know that your printers are able to print on both back and front of the page?](#)

Increasing your school's use of double sided printing helps reduce your environmental impact and will help your school save money.

[The average duplex rate for the NYC DOE is 14%](#)

A modest improvement in duplex of 10% would reduce the carbon footprint by over 435,000 pounds of CO₂ per year, and save the DOE over \$78,000 in paper costs annually.

[Lexmark printers 6 years and younger all have duplex capability. The following duplex initiatives can reduce paper consumption and save money:](#)

Setting duplex as your default setting on your printer

Educating end users about the benefit of duplex printing.

[For more information on how the DOE is focused on Sustainability check:](#)

<http://schools.nyc.gov/community/facilities/sustainability/about/>

Actions you can take to Save your School Money

- Use highest yield toner whenever possible to lower the cost per page.
- Consider replacing printers over 6 years old to optimize eco-friendly printer environment.
- Duplex multiple page documents when possible to reduce paper usage.

Printer details

Model	Serial Number	Age in Years	Utilization	ATS Printer	Avg Mono Pages	Avg Color Pages	Avg Monthly Volume
CS510de	502720946BBVP	3	11%		781	23	804

CS510de	502728946BX89	4	37%		880	1743	2623
CS510DE	502704946HNTD	3	5%		170	208	378
CS510DE	502704946HNYO	3					
CX510DE	752744946R5GG	2	18%		264	1029	1293
E360dn	72M3LYY	11		Yes			
E460dn	72HYD4G	7	2%		216		216
MS510dn	451430HH07LHM	7					
MS510dn	451430HH07LD6	7					
MS510dn	451430HH07LK7	7					
MS510dn	451430HH07LDO	7					
MS510dn	451430HH07LHV	7					
MS510dn	451430HH07LDM	7					
MS510dn	451430HH07LDK	7					
MS510dn	451430HH07LDW	7					
MS510dn	451430HH07LK2	7	7%		1010		1010
MS510dn	451430HH07LDB	7					
MS510dn	451430HH07LDG	7					
MS510dn	451444HH1LG11	5					
MS510dn	451430HH06XTW	4					
MS510dn	451430HH07LHY	7					
MS510dn	451430HH07LK3	7					
MS510dn	451445HH211C1	5					
MS510dn	451430HH06XTX	7					
MS510dn	451430HH07LCX	7					
MS510dn	451430HH07LDC	7	14%		1979		1979
MS510dn	451430HH07LDH	7					
MS510dn	451430HH07LD9	7					
MS510DN	45147GHH3RXMZ	3					
MS510DN	45147GHH3RXTF	3					
MS510dn	451430HH07LCY	7					
MS510dn	451430HH07LFL	7					
MS510dn	451444HH1LG1N	5					
MS510dn	451430HH07LCV	7					
MS510dn	451430HH07LD3	7					
MS510dn	451430HH06XV9	7	5%		729		729
MS510DN	45147GHH3RXGT	3					
MS510DN	45147GHH3RXNL	3					
MS510DN	45147GHH3RXXM	3					
MS510DN	45147GHH3RXT3	3					
MS510DN	45147GHH3RXT5	3					
MS510DN	45147GHH3RXTG	3					
MS510DN	45146PHH3DGMC	3					
MS510DN	45146PHH3DGRB	3					
MS510DN	45146PHH3DGRM	3					
MS621DN	460090200LVKB	1	5%		1034		1034
MS621DN	460090200LVM8	1					
MS810DE	40636C6603KZY	3					
MS810DE	40636C6603L04	3	2%		381		381
MS810DE	40636C6606PPF	3	5%		1039		1039
MS810DE	40636C6603KZP	3	8%		1628		1628
MS810de	406336990D9L4	6	0%	Yes	62		62
MX711dhe	74635C66002H7	4	2%	Yes	420		420
MX722ADHE	7464832020CK9	1	3%	Yes	3495		3495
T650n	7950G4Y	8					
T650n	794M32H	9		Yes			
T650n	794M36H	9		Yes			
T650n	7955M8X	8	4%		807		807
X544n	94F4M5F	9					
X748de	7526499441YDW	5	3%	Yes	86	240	326

<< End of Data >>

For more information regarding this snapshot, please contact your Lexmark team

Lexmark Team

**CDW Team
CDW Sales Department – 800-705-4239**

Title	Name	E-Mail	Phone
Client Executive	Mindy Maher	mmaher@lexmark.com	212-880-2837
Site Operations	Mark Ennis	mennis@lexmark.com	908-210-3030
Systems Engineer	TBD	TBD	TBD

Title	Name	E-Mail	Phone
Sales Manager	John Skidmore	john.skidmore@cdwg.com	(866) 687-3187
Sales Operations	Jon Gray	jongray@cdw.com	(203) 851-7133
		NYCDOE@cdwg.com	