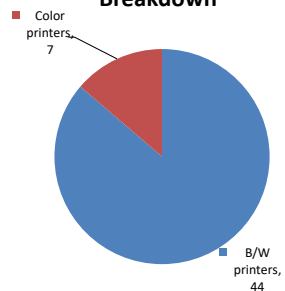


Please find enclosed a snap shot of your school's printer environment. The printer breakdown and data encompasses only the printers we can see on your network. You may have additional printers that are locally connected (e.g. USB attached), but those are not included in this breakdown.

Chart 1 – School Printer Breakdown

This provides your school's enrollment, along with the number of printers, including the distribution between B/W and color printers.

Color/Mono Device Breakdown



PAULA HEDBAVNY SCHOOL

Enrollment	519
B/W printers	44
Color printers	7
Total printers	51

From the list provided on page 3 are all of your printers represented? If not, how many are missing Providing Lexmark the asset data that is missing will allow us to give you a more accurate picture of your printer environment.

Do you know how many printers you have in your main office, compared to the number of people who sit in the main office?

Reducing the number of devices and using the most efficient models in the right locations can help your school save money.

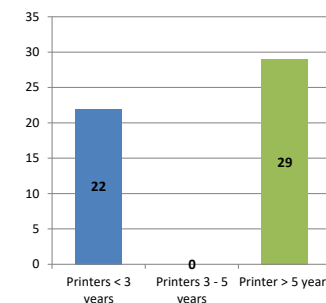
Chart 2 – Printer Age Statistics

Here we show the average age of your printers and show the distribution among 3 age categories; under 3 years old, 3-5 years old and over 5 years old.

Printer Age Statistics

Average Age (years)	6
Printers < 3 years	22
Printers 3 - 5 years	0
Printer > 5 years	29

Printer Age Statistics



The age of your printer fleet plays a large role in your annual printer maintenance and toner cost. The DOE only supports printers 6 years and younger.

Once the warranty expires and the age of your device exceeds 6 years, maintenance and repairs become very costly.

New printers have higher toner yields than older printers, resulting in lower cost per page which saves money.

Newer printers are Energy Star compliant and have advanced eco settings which help reduce energy usage and saves money.

Glossary

B/W - Black and White Printing Only

Color - Color or Black and White Printing

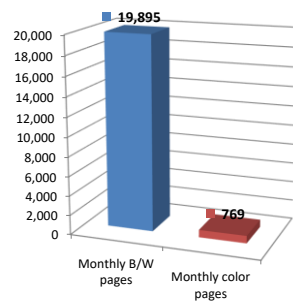
Duplex - Printing on both sides of the paper.

Simplex - Single Sided Printing

Chart 3 – Volume of Pages Printed

This provides your printed page volumes for the previous month for both B/W and color print jobs. In addition, a utilization percentage is calculated by comparing your print volume for each printer to the maximum monthly volume capacity for that printer model.

Color/Mono Pages Printed



Volume of pages printed

Monthly B/W pages	19,895
Monthly color pages	769
Total monthly pages	20,664
Color page %	4%
Utilization %	3%

[Do you know if all of your printers are being used and how much?](#)

Knowing where volumes are created helps identify areas for consolidation and helps you select the most efficient printers for replacement.

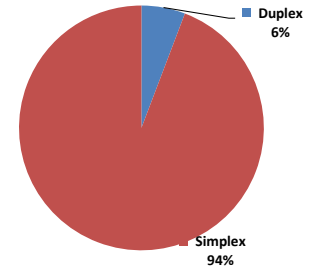
[Are you printing a large amount of color volume?](#)

Controlling color volume, which typically costs more than black and white, can help your school save money.

Chart 4 – Duplex Breakdown

This section shows the percentage of duplexed (double-sided) pages printed along with your duplex opportunity. Duplex opportunity is the total number of pages that could be printed duplex and does not include single page documents. Keep in mind, only the newer printers report duplex statistics. The duplex opportunity shows the prior month's print volume, from the printers with duplex statistics, that could have been duplexed.

Duplex Vs. Simplex



Duplex breakdown

Duplex opportunity	3,434
Duplex	6%

[Did you know that your printers are able to print on both back and front of the page?](#)

Increasing your school's use of double sided printing helps reduce your environmental impact and will help your school save money.

[The average duplex rate for the NYC DOE is 14%](#)

A modest improvement in duplex of 10% would reduce the carbon footprint by over 435,000 pounds of CO₂ per year, and save the DOE over \$78,000 in paper costs annually.

[Lexmark printers 6 years and younger all have duplex capability. The following duplex initiatives can reduce paper consumption and save money:](#)

Setting duplex as your default setting on your printer

Educating end users about the benefit of duplex printing.

[For more information on how the DOE is focused on Sustainability check:](#)

<http://schools.nyc.gov/community/facilities/sustainability/about/>

Actions you can take to Save your School Money

- Use highest yield toner whenever possible to lower the cost per page.
- Consider replacing printers over 6 years old to optimize eco-friendly printer environment.
- Duplex multiple page documents when possible to reduce paper usage.

Printer details

Model	Serial Number	Age in Years	Utilization	ATS Printer	Avg Mono Pages	Avg Color Pages	Avg Monthly Volume
CSS10DE	502706946HRG4	3	2%		41	111	152

CS510DE	502751945H2YV	3					
CS725DE	50288260F2W71	1	3%		138	470	608
CX510DE	75274694GRB9Z	2	2%	Yes	13	143	156
CX622ADE	7529901141P9G	1					
CX725DHE	75288270F2PVK	1	0%		53	45	98
E460dn	72HKZ8D	9					
E460dn	72HKZ81	9	22%		2155		2155
E460dn	72HKZ8B	9	5%		471		471
E460dn	72HKZ85	9					
E460dn	72HKZ4N	9					
E460dn	72HKZ8G	9	5%		531		531
E460dn	72HKZ84	9	5%		543		543
E460dn	72HKZ82	9					
E460dn	72HKZ7R	9					
E460dn	72HKZ8M	9					
E460dn	72HKY GK	9	6%		551		551
E460dn	72HKZ80	9					
E460dn	72HKZ5L	9					
E460dn	72HKZ87	9					
LaserjetP2055	793VR9Y	9					
MS510DN	45147GHH4C8YR	2	9%		1285		1285
MS510DN	45147GHH4C8ZF	2	9%		1195		1195
MS510DN	45147GHH4C8T5	2					
MS510DN	45147GHH4C8YY	2					
MS510DN	45147GHH4C8Y3	2	8%		1062		1062
MS510DN	45147GHH4C8ZC	2	0%		55		55
MS510DN	45147GHH4C8ZH	2					
MS510DN	45147GHH4C8ZM	2					
MS510DN	45147GHH4C8ZN	2	5%		761		761
MS510DN	45147GHH4C8ZW	2					
MS510DN	45147GHH4C8Z2	2					
MX511DHE	70157GHH1DKMW	3	4%	Yes	425		425
MX511DHE	70157GHH1DKMN	3	11%	Yes	1328		1328
MX711DHE	74638D660043M	2	6%	Yes	1510		1510
MX711DHE	74637D6602204	2	16%	Yes	3912		3912
MX711DHE	74638D660043Y	2	3%		777		777
T630 Low Volt LAD CA SA US	4116873	16					
T630 Low Volt LAD CA SA US	4116915	16					
T640n	791C55X	13	3%		352		352
T640n	7912M52	13	2%	Yes	238		238
T650dn	795857K	8					
T650dn	795856B	8		Yes			
T650n	7959XGR	8	4%		731		731
T650n	7959XH2	8	2%		349		349
T650n	7959XH3	8	3%		579		579
T650n	7959V0D	8					
T650n	7959XH0	8	4%		740		740
T650n	7950G0X	8	1%	Yes	100		100
X544n	94F4CW5	9		Yes			
X646dte	792K4RW	11		Yes			

<< End of Data >>

For more information regarding this snapshot, please contact your Lexmark team

Lexmark Team

CDW Team
CDW Sales Department – 800-705-4239

Title	Name	E-Mail	Phone
Client Executive	Mindy Maher	mmaher@lexmark.com	212-880-2837
Site Operations	Mark Ennis	mennis@lexmark.com	908-210-3030
Systems Engineer	TBD	TBD	TBD

Title	Name	E-Mail	Phone
Sales Manager	John Skidmore	john.skidmore@cdwg.com	(866) 687-3187
Sales Operations	Jon Gray	jongray@cdw.com	(203) 851-7133
		NYCDOE@cdwg.com	