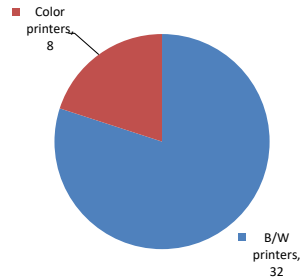


Please find enclosed a snap shot of your school's printer environment. The printer breakdown and data encompasses only the printers we can see on your network. You may have additional printers that are locally connected (e.g. USB attached), but those are not included in this breakdown.

Chart 1 – School Printer Breakdown

This provides your school's enrollment, along with the number of printers, including the distribution between B/W and color printers.

Color/Mono Device Breakdown



WASHINGTON HEIGHTS EXPEDITI

Enrollment	899
B/W printers	32
Color printers	8
Total printers	40

From the list provided on page 3 are all of your printers represented? If not, how many are missing Providing Lexmark the asset data that is missing will allow us to give you a more accurate picture of your printer environment.

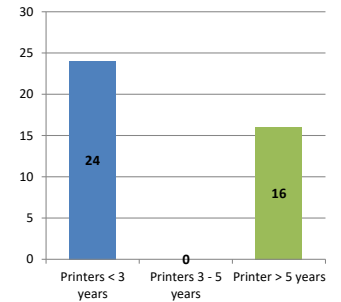
Do you know how many printers you have in your main office, compared to the number of people who sit in the main office?

Reducing the number of devices and using the most efficient models in the right locations can help your school save money.

Chart 2 – Printer Age Statistics

Here we show the average age of your printers and show the distribution among 3 age categories; under 3 years old, 3-5 years old and over 5 years old.

Printer Age Statistics



Printer Age Statistics

Average Age (years)	5
Printers < 3 years	24
Printers 3 - 5 years	0
Printer > 5 years	16

The age of your printer fleet plays a large role in your annual printer maintenance and toner cost. The DOE only supports printers 6 years and younger.

Once the warranty expires and the age of your device exceeds 6 years, maintenance and repairs become very costly.

New printers have higher toner yields than older printers, resulting in lower cost per page which saves money.

Newer printers are Energy Star compliant and have advanced eco settings which help reduce energy usage and saves money.

Glossary

B/W - Black and White Printing Only

Color - Color or Black and White Printing

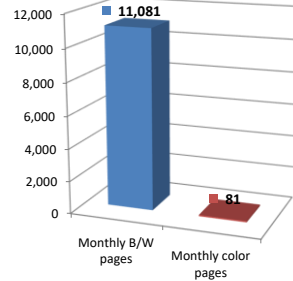
Duplex - Printing on both sides of the paper.

Simplex - Single Sided Printing

Chart 3 – Volume of Pages Printed

This provides your printed page volumes for the previous month for both B/W and color print jobs. In addition, a utilization percentage is calculated by comparing your print volume for each printer to the maximum monthly volume capacity for that printer model.

Color/Mono Pages Printed



Volume of pages printed

Monthly B/W pages	11,081
Monthly color pages	81
Total monthly pages	11,162
Color page %	1%
Utilization %	2%

[Do you know if all of your printers are being used and how much?](#)

Knowing where volumes are created helps identify areas for consolidation and helps you select the most efficient printers for replacement.

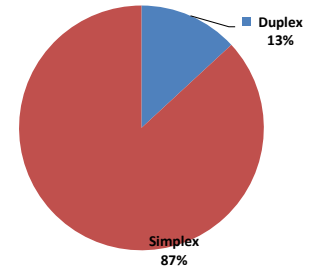
[Are you printing a large amount of color volume?](#)

Controlling color volume, which typically costs more than black and white, can help your school save money.

Chart 4 – Duplex Breakdown

This section shows the percentage of duplexed (double-sided) pages printed along with your duplex opportunity. Duplex opportunity is the total number of pages that could be printed duplex and does not include single page documents. Keep in mind, only the newer printers report duplex statistics. The duplex opportunity shows the prior month's print volume, from the printers with duplex statistics, that could have been duplexed.

Duplex Vs. Simplex



Duplex breakdown

Duplex opportunity	1,977
Duplex	13%

[Did you know that your printers are able to print on both back and front of the page?](#)

Increasing your school's use of double sided printing helps reduce your environmental impact and will help your school save money.

[The average duplex rate for the NYC DOE is 14%](#)

A modest improvement in duplex of 10% would reduce the carbon footprint by over 435,000 pounds of CO₂ per year, and save the DOE over \$78,000 in paper costs annually.

[Lexmark printers 6 years and younger all have duplex capability. The following duplex initiatives can reduce paper consumption and save money:](#)

Setting duplex as your default setting on your printer

Educating end users about the benefit of duplex printing.

[For more information on how the DOE is focused on Sustainability check:](#)

<http://schools.nyc.gov/community/facilities/sustainability/about/>

Actions you can take to Save your School Money

- Use highest yield toner whenever possible to lower the cost per page.
- Consider replacing printers over 6 years old to optimize eco-friendly printer environment.
- Duplex multiple page documents when possible to reduce paper usage.

Printer details

Model	Serial Number	Age in Years	Utilization	ATS Printer	Avg Mono Pages	Avg Color Pages	Avg Monthly Volume
CSS10DE	502736945PKZN	2	6%		356	81	437

CS510DE	502739945R1M1	2			
CS510DE	502736945PKZ8	2			
CS510DE	502739945R1GW	2			
CS510DE	502739945R1M2	2			
CS622DE	5029923033803	0			
CS622DE	50299150325H9	0			
CX622ADE	75299081427W3	0			
E352dn	6221N04	12			
MS510DN	45148GHH4MHX7	2	0%	50	50
MS510DN	45148GHH4MHX0	2			
MS510DN	45148GHH4MHXF	2	4%	532	532
MS510DN	45147GHH428D4	2	6%	830	830
MS510dn	451431HH09MC9	7			
MS510DN	45147GHH428CR	2	3%	422	422
MS510DN	45147GHH428CT	2	4%	624	624
MS510DN	45147GHH428CW	2			
MS510DN	45148GHH4MHR6	2			
MS510DN	45148GHH4MHWK	2	13%	1850	1850
MS510DN	45148GHH4MHWX	2	4%	517	517
MS510DN	45148GHH4MHXC	2			
MS621DN	460083700D8Y4	1	3%	507	507
MS621DN	46009333107X9	0			
MS621DN	460093531149Y	0			
MS810de	406336990DT7R	6	0%	72	72
MS810de	406336990DT7X	6	10%	1913	1913
MS810de	406336990DT4V	6	3%	681	681
MS822DE	4064903014PF3	1	2%	946	946
MX421ADE	7017849207BGG	0			
T630	9929XTM	15			
T640n	791V6GV	12	3%	437	437
T640n	791BP4B	13			
T640n	790KWLC	14	10%	1344	1344
T650n	7956TPH	7			
T650n	7940MR2	10			
T650n	7940LXC	10			
T650n	7950G14	8			
T650n	7940LX3	10			
X544dw	94F7BWH	7			
X646dte	792KCM9	11		Yes	

<< End of Data >>

For more information regarding this snapshot, please contact your Lexmark team

Lexmark Team

**CDW Team
CDW Sales Department – 800-705-4239**

Title	Name	E-Mail	Phone
Client Executive	Mindy Maher	mmaher@lexmark.com	212-880-2837
Site Operations	Mark Ennis	mennis@lexmark.com	908-210-3030
Systems Engineer	TBD	TBD	TBD

Title	Name	E-Mail	Phone
Sales Manager	John Skidmore	john.skidmore@cdwg.com	(866) 687-3187
Sales Operations	Jon Gray	jongray@cdw.com	(203) 851-7133
		NYCDOE@cdwg.com	