

Please find enclosed a snap shot of your school's printer environment. The printer breakdown and data encompasses only the printers we can see on your network. You may have additional printers that are locally connected (e.g. USB attached), but those are not included in this breakdown.

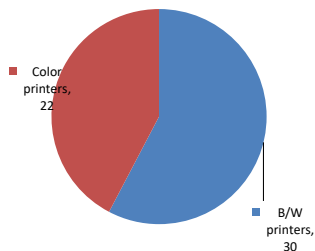
Chart 1 – School Printer Breakdown

This provides your school's enrollment, along with the number of printers, including the distribution between B/W and color printers.

School For Cooperative Technical Education

Enrollment	1320
B/W printers	30
Color printers	22
Total printers	52

Color/Mono Device Breakdown



From the list provided on page 3 are all of your printers represented? If not, how many are missing Providing Lexmark the asset data that is missing will allow us to give you a more accurate picture of your printer environment.

Do you know how many printers you have in your main office, compared to the number of people who sit in the main office? Reducing the number of devices and using the most efficient models in the right locations can help your school save money.

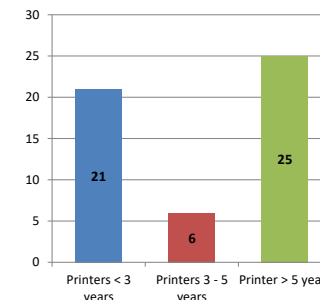
Chart 2 – Printer Age Statistics

Here we show the average age of your printers and show the distribution among 3 age categories; under 3 years old, 3-5 years old and over 5 years old.

Printer Age Statistics

Average Age (years)	4
Printers < 3 years	21
Printers 3 - 5 years	6
Printer > 5 years	25

Printer Age Statistics



The age of your printer fleet plays a large role in your annual printer maintenance and toner cost. The DOE only supports printers 6 years and younger.

Once the warranty expires and the age of your device exceeds 6 years, maintenance and repairs become very costly.

New printers have higher toner yields than older printers, resulting in lower cost per page which saves money.

Newer printers are Energy Star compliant and have advanced eco settings which help reduce energy usage and saves money.

Glossary

B/W - Black and White Printing Only

Color - Color or Black and White Printing

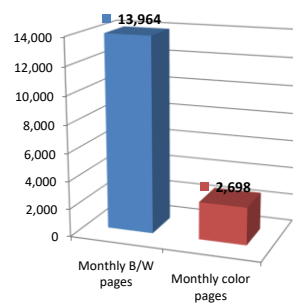
Duplex - Printing on both sides of the paper.

Simplex - Single Sided Printing

Chart 3 – Volume of Pages Printed

This provides your printed page volumes for the previous month for both B/W and color print jobs. In addition, a utilization percentage is calculated by comparing your print volume for each printer to the maximum monthly volume capacity for that printer model.

Color/Mono Pages Printed



Volume of pages printed

Monthly B/W pages	13,964
Monthly color pages	2,698
Total monthly pages	16,662
Color page %	16%
Utilization %	2%

[Do you know if all of your printers are being used and how much?](#)

Knowing where volumes are created helps identify areas for consolidation and helps you select the most efficient printers for replacement.

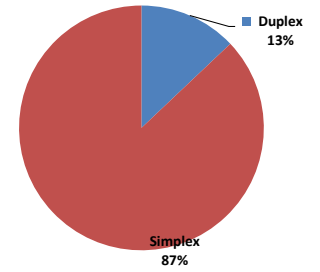
[Are you printing a large amount of color volume?](#)

Controlling color volume, which typically costs more than black and white, can help your school save money.

Chart 4 – Duplex Breakdown

This section shows the percentage of duplexed (double-sided) pages printed along with your duplex opportunity. Duplex opportunity is the total number of pages that could be printed duplex and does not include single page documents. Keep in mind, only the newer printers report duplex statistics. The duplex opportunity shows the prior month's print volume, from the printers with duplex statistics, that could have been duplexed.

Duplex Vs. Simplex



Duplex breakdown

Duplex opportunity	3,514
Duplex	13%

[Did you know that your printers are able to print on both back and front of the page?](#)

Increasing your school's use of double sided printing helps reduce your environmental impact and will help your school save money.

[The average duplex rate for the NYC DOE is 14%](#)

A modest improvement in duplex of 10% would reduce the carbon footprint by over 435,000 pounds of CO₂ per year, and save the DOE over \$78,000 in paper costs annually.

[Lexmark printers 6 years and younger all have duplex capability. The following duplex initiatives can reduce paper consumption and save money:](#)

Setting duplex as your default setting on your printer

Educating end users about the benefit of duplex printing.

[For more information on how the DOE is focused on Sustainability check:](#)

<http://schools.nyc.gov/community/facilities/sustainability/about/>

Actions you can take to Save your School Money

- Use highest yield toner whenever possible to lower the cost per page.
- Consider replacing printers over 6 years old to optimize eco-friendly printer environment.
- Duplex multiple page documents when possible to reduce paper usage.

Printer details

Model	Serial Number	Age in Years	Utilization	ATS Printer	Avg Mono Pages	Avg Color Pages	Avg Monthly Volume
CS510de	50275194688BP	4	3%		30	177	207

CS510de	5027339466XW4	5	4%	128	144	272
CS510de	5027229468BFP2	4	23%	98	1507	1605
CS510de	50275194688BF	5				
CS510DE	502751945H2TX	3				
CS510DE	502751945H2W9	3				
CS510DE	502738945PVVV	2				
CS510DE	502738945PVYF	2				
CS510DE	502740945R5T9	2				
CS510DE	502710945VK5T	1				
CS622DE	5029817040416	1				
CS622DE	50298190405R2	1	4%	149	261	410
CS622DE	50298190405T2	1	4%	50	348	398
CS622DE	5029829040G2D	1				
CS622DE	5029829040G2G	1				
CS725DE	50288360F32WL	1	1%	61	132	193
CX510DE	752745946R638	2	2%	46	79	125
CX510de	7527039463XC0	6				
CX510DE	752732946NHB3	2	1%	46	48	94
CX622ADE	7529845141BDW	0				
CX622ADE	75299081427WC	0				
E460dn	72R3L6X	7				
E460dn	72R3L6T	7				
E460dn	72HYCC2	8				
LaserjetP2055	CNB9L02424	10				
LaserjetP2055	CNB9316920	10				
LaserjetP2055	CNB9N75638	10				
LaserjetP2055	JDPBF916666	10				
MS510dn	451432HH0TFTB	6	2%	262		262
MS510dn	451444HH1CCL7	6	1%	169		169
MS510dn	451444HH1CCLP	6	5%	751		751
MS510dn	451432HH0TFT4	5				
MS510DN	45147GHH428CD	2				
MS510DN	45147GHH428FD	2				
MS810de	4063369908LB4	6	5%	972		972
MS810de	4063369908L9N	6				
MS810de	4063369908LB8	6	1%	100		100
MS810de	4063369908LB7	6				
MS810de	4063369908LBD	6				
MS822DE	4064821010MTV	1	2%	990		990
MX410de	701533LM08779	6	3%	342		342
MX410de	701532LM05XWV	6				
MX410de	701533LM0876H	5	21%	2135		2135
MX410de	701533LM0877K	6				
MX410de	701532LM05XZ5	6	3%	276		276
MX511DHE	70156PHH18YV8	3	8%	910		910
MX711dhe	7463479906CPR	4				
MX722ADHE	74648190202Y5	1	5%	5337	Yes	5337
MX722ADHE	74648500216B1	1	1%	1112		1112
T650n	79416M5	10				
X656de	50275194688BT	5				
X748de	7526239441G3C	5	0%		2	2

<< End of Data >>

For more information regarding this snapshot, please contact your Lexmark team

Lexmark Team

CDW Team
CDW Sales Department – 800-705-4239

Title	Name	E-Mail	Phone
Client Executive	Mindy Maher	mmaher@lexmark.com	212-880-2837
Site Operations	Mark Ennis	mennis@lexmark.com	908-210-3030
Systems Engineer	TBD	TBD	TBD

Title	Name	E-Mail	Phone
Sales Manager	John Skidmore	john.skidmore@cdwg.com	(866) 687-3187
Sales Operations	Jon Gray	jongray@cdw.com	(203) 851-7133
		NYCDOE@cdwg.com	