

Please find enclosed a snap shot of your school's printer environment. The printer breakdown and data encompasses only the printers we can see on your network. You may have additional printers that are locally connected (e.g. USB attached), but those are not included in this breakdown.

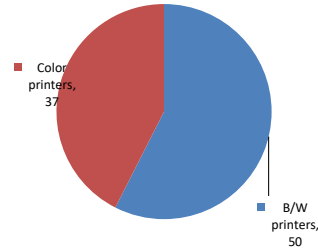
**Chart 1 – School Printer Breakdown**

This provides your school's enrollment, along with the number of printers, including the distribution between B/W and color printers.

**P.S. 049 Dorothy Bonawit Kole**

Enrollment	1198
B/W printers	50
Color printers	37
Total printers	87

**Color/Mono Device Breakdown**



From the list provided on page 3 are all of your printers represented? If not, how many are missing Providing Lexmark the asset data that is missing will allow us to give you a more accurate picture of your printer environment.

Do you know how many printers you have in your main office, compared to the number of people who sit in the main office?

Reducing the number of devices and using the most efficient models in the right locations can help your school save money.

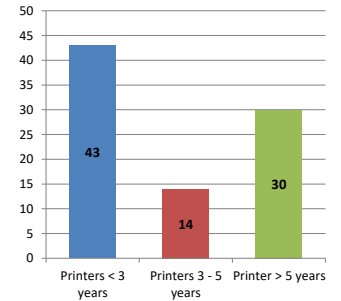
**Chart 2 – Printer Age Statistics**

Here we show the average age of your printers and show the distribution among 3 age categories; under 3 years old, 3-5 years old and over 5 years old.

**Printer Age Statistics**

Average Age (years)	5
Printers < 3 years	43
Printers 3 - 5 years	14
Printer > 5 years	30

**Printer Age Statistics**



The age of your printer fleet plays a large role in your annual printer maintenance and toner cost. The DOE only supports printers 6 years and younger.

Once the warranty expires and the age of your device exceeds 6 years, maintenance and repairs become very costly.

New printers have higher toner yields than older printers, resulting in lower cost per page which saves money.

Newer printers are Energy Star compliant and have advanced eco settings which help reduce energy usage and saves money.

**Glossary**

B/W - Black and White Printing Only

Color - Color or Black and White Printing

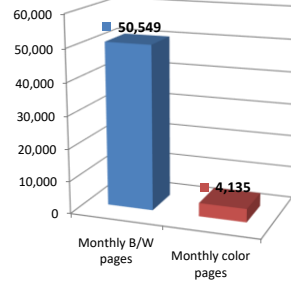
Duplex - Printing on both sides of the paper.

Simplex - Single Sided Printing

### Chart 3 – Volume of Pages Printed

This provides your printed page volumes for the previous month for both B/W and color print jobs. In addition, a utilization percentage is calculated by comparing your print volume for each printer to the maximum monthly volume capacity for that printer model.

Color/Mono Pages Printed



#### Volume of pages printed

Monthly B/W pages	50,549
Monthly color pages	4,135
Total monthly pages	54,684
Color page %	8%
Utilization %	5%

[Do you know if all of your printers are being used and how much?](#)

**Knowing where volumes are created helps identify areas for consolidation and helps you select the most efficient printers for replacement.**

[Are you printing a large amount of color volume?](#)

**Controlling color volume, which typically costs more than black and white, can help your school save money.**

### Chart 4 – Duplex Breakdown

This section shows the percentage of duplexed (double-sided) pages printed along with your duplex opportunity. Duplex opportunity is the total number of pages that could be printed duplex and does not include single page documents. Keep in mind, only the newer printers report duplex statistics. The duplex opportunity shows the prior month's print volume, from the printers with duplex statistics, that could have been duplexed.

Duplex Vs. Simplex



#### Duplex breakdown

Duplex opportunity	Info Not Available
Duplex	0%

[Did you know that your printers are able to print on both back and front of the page?](#)

**Increasing your school's use of double sided printing helps reduce your environmental impact and will help your school save money.**

[The average duplex rate for the NYC DOE is 14%](#)

**A modest improvement in duplex of 10% would reduce the carbon footprint by over 435,000 pounds of CO<sub>2</sub> per year, and save the DOE over \$78,000 in paper costs annually.**

[Lexmark printers 6 years and younger all have duplex capability. The following duplex initiatives can reduce paper consumption and save money:](#)

**Setting duplex as your default setting on your printer**

**Educating end users about the benefit of duplex printing.**

[For more information on how the DOE is focused on Sustainability check:](#)

<http://schools.nyc.gov/community/facilities/sustainability/about/>

## Actions you can take to Save your School Money

- Use highest yield toner whenever possible to lower the cost per page.
- Consider replacing printers over 6 years old to optimize eco-friendly printer environment.
- Duplex multiple page documents when possible to reduce paper usage.

#### Printer details

Model	Serial Number	Age in Years	Utilization	ATS Printer	Avg Mono Pages	Avg Color Pages	Avg Monthly Volume
C534n	94198B1	12					

C534n	94198B5	12					
C534n	9418DM4	12					
C544dn	9812BKM	11					
C544dn	9812BKY	11					
C544dn	9812BGX	11					
C544dn	9812BKH	11					
C544dn	9812D9T	11					
C544dn	9454WVN	9					
C544dn	9454WW0	9					
C544dn	9459R4D	8					
C544dn	9812D86	11					
C544dn	9812D9M	11					
C544dn	9454X1R	9					
C544dn	9812BKB	11					
C544dn	9820M5T	11	30%		584	306	890
C544dn	9812BKT	11					
C544dn	9812BKR	11					
C544dn	9812D8K	11					
C544n	94684FN	8					
C544n	94684FF	8					
CS510de	502706945929N	5					
CS510DE	502743945GKYX	3					
CS510de	5027459450BYC	7					
CS510DE	502713945KBPM	3					
CS510DE	502747946GTGX	3	12%	Yes	349	481	830
CS510de	5027339466X7G	5					
CS510DE	502713945KBMG	3					
CS510de	5027219455X13	6	44%		710	2369	3079
CS510de	5027219455X27	6	35%		1812	644	2456
CS510DE	502713945KBPK	3					
CS510DE	502736946G3PR	2					
CS510DE	502713945KBP8	3					
CS510DE	502736946G3N3	2	12%		539	335	874
CS510DE	502738945PW8F	2					
CX622ADE	7529827140DZT	1					
HP LaserJet P4015dn Printer	CNDYC33767	4	9%		1850		1850
HP LaserJet P4015dn Printer	CNDY942756	4	14%		2734		2734
MS510dn	45145PHH2N5KG	4	10%	Yes	1402		1402
MS510DN	45147GHH3XF3T	3					
MS510DN	45147GHH3XF36	3	11%		1527		1527
MS510DN	45147GHH3XF3F	3					
MS510DN	45147GHH3XF35	3	9%		1297		1297
MS510DN	45147GHH3XF3B	3	23%		3202		3202
MS510DN	45147GHH3XDWR	3	12%		1649		1649
MS510DN	45147GHH3XDW0	3	29%		4006		4006
MS510dn	45145PHH2VXVL	4	15%		2120		2120
MS510DN	45146PHH3K8ZR	3	9%		1212		1212
MS510DN	45147GHH3XDZ9	3	9%		1256		1256
MS510DN	45147GHH3XF3H	3					
MS510DN	45147GHH3XF2K	3	11%		1606		1606
MS510DN	45146PHH3DGNXN	3	14%		1894		1894
MS510dn	45145PHH2VY2D	4					
MS510DN	45147GHH3XDVT	3	4%		517		517
MS510DN	45146PHH3K8Z6	3	28%		3896		3896
MS510DN	45147GHH3XF3R	3	5%		729		729
MS510DN	45147GHH3XDWZ	3					
MS510DN	45147GHH3XD6	3					
MS510DN	45147GHH3XD8	3					
MS510DN	45146PHH3K8ZW	3	9%		1201		1201
MS510DN	45147GHH3XDWW	3					
MS510DN	45147GHH3XF2V	3					
MS510DN	45147GHH3XF38	3					
MS510DN	45147GHH3XDGZ	3					
MS510DN	45147GHH3XDG9	3					

<< More data continued on Next Page >>

24Q049 - Jan 2020 - Page 3

### Printer Details - Page 2

Model	Serial Number	Age in Years	Utilization	ATS Printer	Avg Mono Pages	Avg Color Pages	Avg Monthly Volume
MS621DN	4600820004MNV	1	3%		593		593
MS621DN	4600820004MP1	1					
MS621DN	4600820004MT6	1	13%		2555		2555
MS621DN	460083700D98L	1					

