

Please find enclosed a snap shot of your school's printer environment. The printer breakdown and data encompasses only the printers we can see on your network. You may have additional printers that are locally connected (e.g. USB attached), but those are not included in this breakdown.

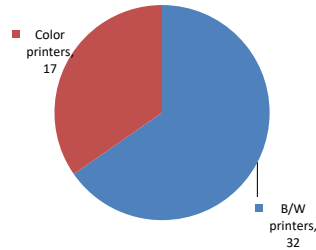
Chart 1 – School Printer Breakdown

This provides your school's enrollment, along with the number of printers, including the distribution between B/W and color printers.

I.S. 73 - The Frank Sansivieri Intermediate School

Enrollment	2008
B/W printers	32
Color printers	17
Total printers	49

Color/Mono Device Breakdown



From the list provided on page 3 are all of your printers represented? If not, how many are missing Providing Lexmark the asset data that is missing will allow us to give you a more accurate picture of your printer environment.

Do you know how many printers you have in your main office, compared to the number of people who sit in the main office? Reducing the number of devices and using the most efficient models in the right locations can help your school save money.

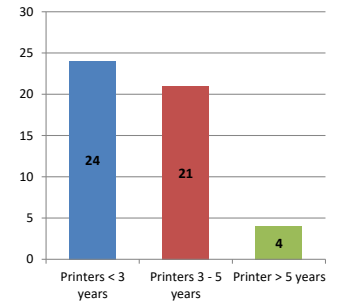
Chart 2 – Printer Age Statistics

Here we show the average age of your printers and show the distribution among 3 age categories; under 3 years old, 3-5 years old and over 5 years old.

Printer Age Statistics

Average Age (years)	3
Printers < 3 years	24
Printers 3 - 5 years	21
Printer > 5 years	4

Printer Age Statistics



The age of your printer fleet plays a large role in your annual printer maintenance and toner cost. The DOE only supports printers 6 years and younger.

Once the warranty expires and the age of your device exceeds 6 years, maintenance and repairs become very costly.

New printers have higher toner yields than older printers, resulting in lower cost per page which saves money.

Newer printers are Energy Star compliant and have advanced eco settings which help reduce energy usage and saves money.

Glossary

B/W - Black and White Printing Only

Color - Color or Black and White Printing

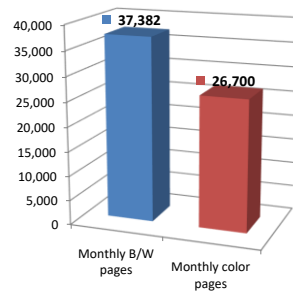
Duplex - Printing on both sides of the paper.

Simplex - Single Sided Printing

Chart 3 – Volume of Pages Printed

This provides your printed page volumes for the previous month for both B/W and color print jobs. In addition, a utilization percentage is calculated by comparing your print volume for each printer to the maximum monthly volume capacity for that printer model.

Color/Mono Pages Printed



Volume of pages printed

Monthly B/W pages	37,382
Monthly color pages	26,700
Total monthly pages	64,082
Color page %	42%
Utilization %	6%

Do you know if all of your printers are being used and how much?

Knowing where volumes are created helps identify areas for consolidation and helps you select the most efficient printers for replacement.

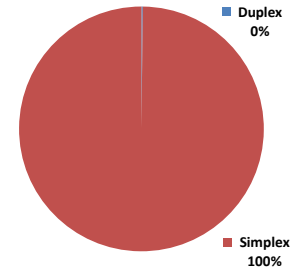
Are you printing a large amount of color volume?

Controlling color volume, which typically costs more than black and white, can help your school save money.

Chart 4 – Duplex Breakdown

This section shows the percentage of duplexed (double-sided) pages printed along with your duplex opportunity. Duplex opportunity is the total number of pages that could be printed duplex and does not include single page documents. Keep in mind, only the newer printers report duplex statistics. The duplex opportunity shows the prior month's print volume, from the printers with duplex statistics, that could have been duplexed.

Duplex Vs. Simplex



Duplex breakdown

Duplex opportunity	358
Duplex	0%

Did you know that your printers are able to print on both back and front of the page?

Increasing your school's use of double sided printing helps reduce your environmental impact and will help your school save money.

The average duplex rate for the NYC DOE is 14%

A modest improvement in duplex of 10% would reduce the carbon footprint by over 435,000 pounds of CO₂ per year, and save the DOE over \$78,000 in paper costs annually.

Lexmark printers 6 years and younger all have duplex capability. The following duplex initiatives can reduce paper consumption and save money:

- Setting duplex as your default setting on your printer
- Educating end users about the benefit of duplex printing.

For more information on how the DOE is focused on Sustainability check:
<http://schools.nyc.gov/community/facilities/sustainability/about/>

Actions you can take to Save your School Money

- Use highest yield toner whenever possible to lower the cost per page.
- Consider replacing printers over 6 years old to optimize eco-friendly printer environment.
- Duplex multiple page documents when possible to reduce paper usage.

Printer details

Model	Serial Number	Age in Years	Utilization	ATS Printer	Avg Mono Pages	Avg Color Pages	Avg Monthly Volume
C534n	9439VBN	4					

CS510de	502726946BTDF	4					
CS725DE	5028643010PV2	3	14%		616	2140	2756
CS725DE	5028643010PTK	3					
CX510DE	752709946HFY0	3	3%		38	145	183
CX510DE	752709946HFN4	3					
CX510DE	752709946HFN5	3	6%	Yes	23	390	413
CX725DHE	7528704010XD8	3	3%	Yes	217	480	697
CX725DHE	7528630010GN0	3	2%	Yes	181	301	482
CX725DHE	7528704010XBF	3	11%	Yes	744	1532	2276
CX725DHE	75287220117Z2	2	12%		653	1729	2382
CX725DHE	75288280F2RG5	1	7%		511	842	1353
CX725DHE	75288280F2RGR	1	43%		1307	7365	8672
CX725DHE	75288340F2WKT	1	11%		483	1800	2283
CX725DHE	75288460F38KB	1	45%		2937	6103	9040
E460dn	72HT2CH	4	4%		414		414
E460dn	72HYCCC	7	5%		532		532
E460dn	72HYCC1	8					
MS510DN	45146PHH3DGZV	3					
MS510DN	45146PHH3DGWZ	3	2%		261		261
MS510DN	45147GHH3TZ98	3		Yes			
MS510DN	75261894429FC	4	1%		158		158
MS510DN	45147GHH3TZB7	3					
MS810de	40635C6606MLC	4					
MS810de	40635C6606MK6	4					
MS810DE	40637D6606C7N	2					
MS810DE	40637D6606C7Z	2	30%		5934		5934
MS810n	40635C66001FM	5					
MS822DE	4064903014PMN	1					
MS822DE	4064903014PN3	1					
MS822DE	4064903014PN5	1					
MX410de	70155PLM0ZMGN	4	11%		1070		1070
MX410de	70155PLM0XXXD	4	4%	Yes	387		387
MX410de	70155PLM0Z3W2	4					
MX421ADE	7017845206PFF	1	3%		339		339
MX421ADE	7017845206P1H	1					
MX511DHE	70156PHH1646X	3		Yes			
MX511DHE	70157GHH1G1TM	3					
MX522ADHE	7017904308P7T	1	11%		1702		1702
MX710de	74635C660292N	3	8%	Yes	5775		5775
MX711dhe	74634C6600NHV	5		Yes			
MX711dhe	74635C6601892	4		Yes			
MX711dhe	74634C66015M4	5	4%	Yes	1005		1005
MX722ADHE	7464832020CGT	1	8%	Yes	8134		8134
MX722ADHE	7464843020X6K	1					
T650n	7932KR8	4		Yes			
T650n	793WZFB	10		Yes			
X748DE	75262894G2F56	3	16%	Yes	1388	228	1616
X748de	752613944273T	4	62%	Yes	2573	3645	6218

<< End of Data >>

For more information regarding this snapshot, please contact your Lexmark team

Lexmark Team

CDW Team
CDW Sales Department – 800-705-4239

Title	Name	E-Mail	Phone
Client Executive	Mindy Maher	mmaher@lexmark.com	212-880-2837
Site Operations	Mark Ennis	mennis@lexmark.com	908-210-3030
Systems Engineer	TBD	TBD	TBD

Title	Name	E-Mail	Phone
Sales Manager	John Skidmore	john.skidmore@cdwg.com	(866) 687-3187
Sales Operations	Jon Gray	jongray@cdw.com	(203) 851-7133
		NYCDOE@cdwg.com	