

Please find enclosed a snap shot of your school's printer environment. The printer breakdown and data encompasses only the printers we can see on your network. You may have additional printers that are locally connected (e.g. USB attached), but those are not included in this breakdown.

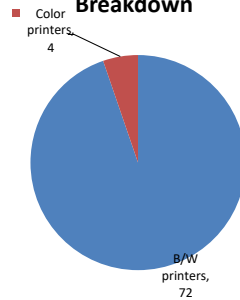
Chart 1 – School Printer Breakdown

This provides your school's enrollment, along with the number of printers, including the distribution between B/W and color printers.

P.S. 128 The Lorraine Tuzzo, Juniper Valley Elemen

Enrollment	958
B/W printers	72
Color printers	4
Total printers	76

Color/Mono Device Breakdown



From the list provided on page 3 are all of your printers represented? If not, how many are missing Providing Lexmark the asset data that is missing will allow us to give you a more accurate picture of your printer environment.

Do you know how many printers you have in your main office, compared to the number of people who sit in the main office?

Reducing the number of devices and using the most efficient models in the right locations can help your school save money.

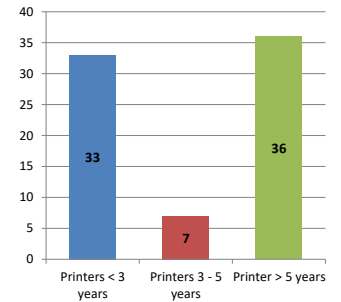
Chart 2 – Printer Age Statistics

Here we show the average age of your printers and show the distribution among 3 age categories; under 3 years old, 3-5 years old and over 5 years old.

Printer Age Statistics

Average Age (years)	6
Printers < 3 years	33
Printers 3 - 5 years	7
Printer > 5 years	36

Printer Age Statistics



The age of your printer fleet plays a large role in your annual printer maintenance and toner cost. The DOE only supports printers 6 years and younger.

Once the warranty expires and the age of your device exceeds 6 years, maintenance and repairs become very costly.

New printers have higher toner yields than older printers, resulting in lower cost per page which saves money.

Newer printers are Energy Star compliant and have advanced eco settings which help reduce energy usage and saves money.

Glossary

B/W - Black and White Printing Only

Color - Color or Black and White Printing

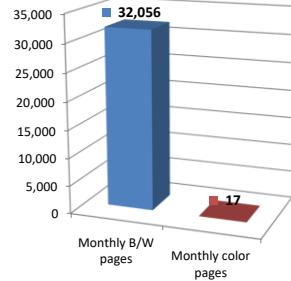
Duplex - Printing on both sides of the paper.

Simplex - Single Sided Printing

Chart 3 – Volume of Pages Printed

This provides your printed page volumes for the previous month for both B/W and color print jobs. In addition, a utilization percentage is calculated by comparing your print volume for each printer to the maximum monthly volume capacity for that printer model.

Color/Mono Pages Printed



Volume of pages printed

Monthly B/W pages	32,056
Monthly color pages	17
Total monthly pages	32,073
Color page %	0%
Utilization %	3%

[Do you know if all of your printers are being used and how much?](#)

Knowing where volumes are created helps identify areas for consolidation and helps you select the most efficient printers for replacement.

[Are you printing a large amount of color volume?](#)

Controlling color volume, which typically costs more than black and white, can help your school save money.

Chart 4 – Duplex Breakdown

This section shows the percentage of duplexed (double-sided) pages printed along with your duplex opportunity. Duplex opportunity is the total number of pages that could be printed duplex and does not include single page documents. Keep in mind, only the newer printers report duplex statistics. The duplex opportunity shows the prior month's print volume, from the printers with duplex statistics, that could have been duplexed.

Duplex Vs. Simplex



Duplex breakdown

Duplex opportunity	Info Not Available
Duplex	0%

[Did you know that your printers are able to print on both back and front of the page?](#)

Increasing your school's use of double sided printing helps reduce your environmental impact and will help your school save money.

[The average duplex rate for the NYC DOE is 14%](#)

A modest improvement in duplex of 10% would reduce the carbon footprint by over 435,000 pounds of CO₂ per year, and save the DOE over \$78,000 in paper costs annually.

[Lexmark printers 6 years and younger all have duplex capability. The following duplex initiatives can reduce paper consumption and save money:](#)

- Setting duplex as your default setting on your printer**
- Educating end users about the benefit of duplex printing.**

[For more information on how the DOE is focused on Sustainability check: <http://schools.nyc.gov/community/facilities/sustainability/about/>](#)

Actions you can take to Save your School Money

- Use highest yield toner whenever possible to lower the cost per page.
- Consider replacing printers over 6 years old to optimize eco-friendly printer environment.
- Duplex multiple page documents when possible to reduce paper usage.

Printer details

Model	Serial Number	Age in Years	Utilization	ATS Printer	Avg Mono Pages	Avg Color Pages	Avg Monthly Volume
CS510de	502751946CWCZ	4					

CS622DE	5029829040G07	1	0%	12	17	29
CS622DE	5029829040G06	1				
CX510de	7527349469MT2	4				
E360dn	72M60F8	11	2%	138		138
E360dn	72M60DN	11				
E360dn	72M60G7	11				
E360dn	72M60M8	11				
E360dn	72M60C6	11				
E360dn	72M60FB	11	23%	1403		1403
E360dn	72M60HP	11				
E360dn	72M60T8	11	31%	1831		1831
E360dn	72M60HR	11				
E360dn	72M60H9	11				
E360dn	72M60CV	11	2%	149		149
E360dn	72M60GC	11	19%	1168		1168
E360dn	72M60D9	11				
E360dn	72M60NF	11				
E360dn	72M60P0	11	17%	1018		1018
E360dn	72M60MZ	11	18%	1086		1086
E360dn	72M60M5	11	11%	656		656
E360dn	72M60MB	11				
E360dn	72M60MY	11	80%	4807		4807
E360dn	72M60N6	11				
E360dn	72M60NH	11				
E360dn	72M60N5	11				
E360dn	72M60M3	11	17%	1037		1037
E360dn	72M60N0	11	10%	574		574
E360dn	72M60DF	11			Yes	
E360dn	72M60K3	11				
E460dn	72HBBRW	9				
E460dw	72HWNM6	8	8%	759		759
E460dw	72HWNFY	8				
E460dw	72HWNMV	8				
MS510dn	45145PHH2VXW5	4				
MS510DN	45146PHH39KW9	3	3%	361		361
MS510DN	45147GHH4D7L7	2				
MS510DN	45147GHH4D7KY	2	1%	132		132
MS510DN	45147GHH4C972	2	4%	549		549
MS621DN	4600820004MM1	1	1%	141		141
MS621DN	4600820004MTD	1	1%	199		199
MS621DN	4600820004MTG	1				
MS621DN	460091730TMHG	0				
MS621DN	460091730TMHK	0				
MS621DN	460091730TMMH2	0				
MS621DN	460091730TMMH5	0				
MS621DN	460091730TMMH6	0				
MS621DN	460091730TMMH7	0				
MS621DN	460091730TMMH9	0				
MS621DN	460091730TMTP	0				
MS621DN	460091730TMTR	0				
MS621DN	460091730TNLV	0				
MS621DN	460091730TNNB	0				
MS621DN	460091730TNNND	0				
MS621DN	460091730TNNF	0				
MS621DN	460091730TNNH	0				
MS621DN	460091730TNNK	0				
MS621DN	460091730TNNL	0				
MS621DN	460091730TNNW	0				
MS621DN	460091730TNN1	0				
MS621DN	460091730TNN5	0				
MS621DN	460091730TNN6	0				
MS621DN	460091730TNN9	0				
MS621DN	4600935311493	0				
MS810	45146PHH2ZPM8	4				

<< More data continued on Next Page >>

24Q128 - Jan 2020 - Page 3

Printer Details - Page 2

Model	Serial Number	Age in Years	Utilization	ATS Printer	Avg Mono Pages	Avg Color Pages	Avg Monthly Volume
MS810	451455HH26XV6	5					
MS810DE	40636C6606PPN	3	73%	Yes	14616		14616
MS810DE	40636C6606PPK	3	5%	Yes	1078		1078
MS822DE	4064839012XR1	0					

