

Lexmark Managed Print Services Monthly Report: Jan 2020
24Q239 - P.S. 239, 17-15 Weirfield Street, Queens, NY 11385-5351

Please find enclosed a snap shot of your school's printer environment. The printer breakdown and data encompasses only the printers we can see on your network. You may have additional printers that are locally connected (e.g. USB attached), but those are not included in this breakdown.

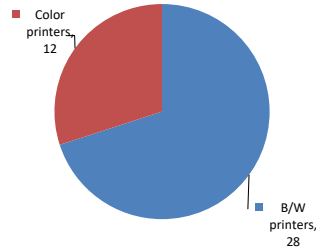
Chart 1 – School Printer Breakdown

This provides your school's enrollment, along with the number of printers, including the distribution between B/W and color printers.

P.S. 239

Enrollment	515
B/W printers	28
Color printers	12
Total printers	40

Color/Mono Device Breakdown



From the list provided on page 3 are all of your printers represented? If not, how many are missing
Providing Lexmark the asset data that is missing will allow us to give you a more accurate picture of your printer environment.

Do you know how many printers you have in your main office, compared to the number of people who sit in the main office?
Reducing the number of devices and using the most efficient models in the right locations can help your school save money.

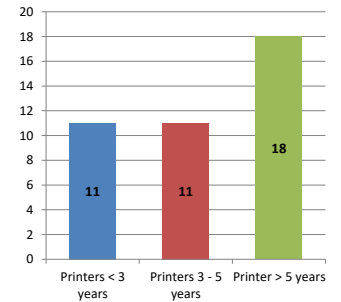
Chart 2 – Printer Age Statistics

Here we show the average age of your printers and show the distribution among 3 age categories; under 3 years old, 3-5 years old and over 5 years old.

Printer Age Statistics

Average Age (years)	6
Printers < 3 years	11
Printers 3 - 5 years	11
Printer > 5 years	18

Printer Age Statistics



The age of your printer fleet plays a large role in your annual printer maintenance and toner cost. The DOE only supports printers 6 years and younger.

Once the warranty expires and the age of your device exceeds 6 years, maintenance and repairs become very costly.

New printers have higher toner yields than older printers, resulting in lower cost per page which saves money.

Newer printers are Energy Star compliant and have advanced eco settings which help reduce energy usage and saves money.

Glossary

B/W - Black and White Printing Only

Color - Color or Black and White Printing

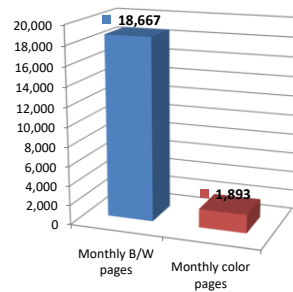
Duplex - Printing on both sides of the paper.

Simplex - Single Sided Printing

Chart 3 – Volume of Pages Printed

This provides your printed page volumes for the previous month for both B/W and color print jobs. In addition, a utilization percentage is calculated by comparing your print volume for each printer to the maximum monthly volume capacity for that printer model.

Color/Mono Pages Printed



Volume of pages printed

Monthly B/W pages	18,667
Monthly color pages	1,893
Total monthly pages	20,560
Color page %	9%
Utilization %	4%

Do you know if all of your printers are being used and how much?

Knowing where volumes are created helps identify areas for consolidation and helps you select the most efficient printers for replacement.

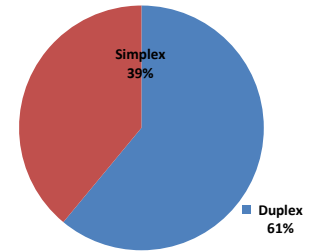
Are you printing a large amount of color volume?

Controlling color volume, which typically costs more than black and white, can help your school save money.

Chart 4 – Duplex Breakdown

This section shows the percentage of duplexed (double-sided) pages printed along with your duplex opportunity. Duplex opportunity is the total number of pages that could be printed duplex and does not include single page documents. Keep in mind, only the newer printers report duplex statistics. The duplex opportunity shows the prior month's print volume, from the printers with duplex statistics, that could have been duplexed.

Duplex Vs. Simplex



Duplex breakdown

Duplex opportunity	182
Duplex	61%

Did you know that your printers are able to print on both back and front of the page?

Increasing your school's use of double sided printing helps reduce your environmental impact and will help your school save money.

The average duplex rate for the NYC DOE is 14%

A modest improvement in duplex of 10% would reduce the carbon footprint by over 435,000 pounds of CO₂ per year, and save the DOE over \$78,000 in paper costs annually.

Lexmark printers 6 years and younger all have duplex capability. The following duplex initiatives can reduce paper consumption and save money:

- Setting duplex as your default setting on your printer**
- Educating end users about the benefit of duplex printing.**

For more information on how the DOE is focused on Sustainability check:
<http://schools.nyc.gov/community/facilities/sustainability/about/>

Actions you can take to Save your School Money

- Use highest yield toner whenever possible to lower the cost per page.
- Consider replacing printers over 6 years old to optimize eco-friendly printer environment.
- Duplex multiple page documents when possible to reduce paper usage.

Printer details

Model	Serial Number	Age in Years	Utilization	ATS Printer	Avg Mono Pages	Avg Color Pages	Avg Monthly Volume
CS510DE	502739945R1FP	2	7%	Yes	304	194	498

CS510de	502720946B8B2	4	15%		154	919	1073
CS510de	502728946BX8B	4					
CS510de	502728946BX49	4	0%		1	19	20
CS622DE	50299230337YZ	0					
CS725DE	5028704010ZDW	3					
CX510DE	752731946DVRM	3	14%		251	761	1012
MS510dn	451457HH2GMXN	4					
MS510dn	45146PHH2X3GZ	4	5%		730		730
MS510DN	45147GHH4D769	2					
MS621DN	460083600CZDP	1	0%		84		84
MS621DN	460083600CZDF	1	2%		401		401
MS810DE	40637C6600BRF	3	47%		9339		9339
MS810DE	40637C6600BRD	3	2%		317		317
MS810de	4063269903D0R	7	2%	Yes	451		451
MX310dn	701556LM0T991	5					
MX410de	701533LM0876N	6					
MX410DE	70156PLM183Z3	3	6%	Yes	613		613
MX421ADE	7017840205W0B	1	1%		56		56
MX421ADE	70178321043VG	1	3%		278		278
MX421ADE	70178321043W1	1					
MX711DHE	74636C6600X7M	3	13%	Yes	3262		3262
MX711dhe	74635C6602G79	4	1%	Yes	212		212
SVCE322	41AGX65	17					
SVCE322	41ZY065	17					
SVCE322	41AGY96	17					
SVCE322	41AGY64	17					
SVCE322	41AGY58	17					
T650n	7958VD9	7	3%		653		653
T650n	79544XV	8	1%		127		127
T650n	794LQZT	9					
T650n	794FXXB	9	2%		382		382
T650n	79544Y7	8	4%		848		848
T650n	79544Z7	8	0%		21		21
T650n	793T1Z7	9		Yes			
T650n	793T20C	9		Yes			
T650n	793T17T	9					
T650n	793VLKN	10	1%		183		183
X646dte	792HTBC	11		Yes			
X656de	502720946B8B4	5					

<< End of Data >>

For more information regarding this snapshot, please contact your Lexmark team

Lexmark Team

**CDW Team
CDW Sales Department – 800-705-4239**

Title	Name	E-Mail	Phone
Client Executive	Mindy Maher	mmaher@lexmark.com	212-880-2837
Site Operations	Mark Ennis	mennis@lexmark.com	908-210-3030
Systems Engineer	TBD	TBD	TBD

Title	Name	E-Mail	Phone
Sales Manager	John Skidmore	john.skidmore@cdwg.com	(866) 687-3187
Sales Operations	Jon Gray	jongray@cdw.com	(203) 851-7133
		NYCDOE@cdwg.com	