

Please find enclosed a snap shot of your school's printer environment. The printer breakdown and data encompasses only the printers we can see on your network. You may have additional printers that are locally connected (e.g. USB attached), but those are not included in this breakdown.

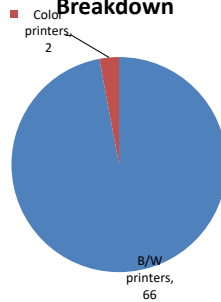
**Chart 1 – School Printer Breakdown**

This provides your school's enrollment, along with the number of printers, including the distribution between B/W and color printers.

**P.S. 107 Thomas A Dooley**

Enrollment	938
B/W printers	66
Color printers	2
Total printers	68

**Color/Mono Device Breakdown**



From the list provided on page 3 are all of your printers represented? If not, how many are missing Providing Lexmark the asset data that is missing will allow us to give you a more accurate picture of your printer environment.

Do you know how many printers you have in your main office, compared to the number of people who sit in the main office?

Reducing the number of devices and using the most efficient models in the right locations can help your school save money.

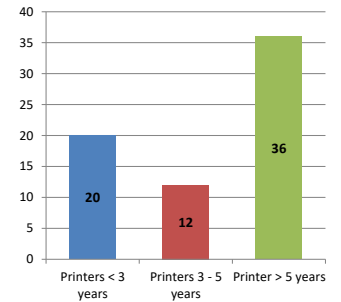
**Chart 2 – Printer Age Statistics**

Here we show the average age of your printers and show the distribution among 3 age categories; under 3 years old, 3-5 years old and over 5 years old.

**Printer Age Statistics**

Average Age (years)	6
Printers < 3 years	20
Printers 3 - 5 years	12
Printer > 5 years	36

**Printer Age Statistics**



The age of your printer fleet plays a large role in your annual printer maintenance and toner cost. The DOE only supports printers 6 years and younger.

Once the warranty expires and the age of your device exceeds 6 years, maintenance and repairs become very costly.

New printers have higher toner yields than older printers, resulting in lower cost per page which saves money.

Newer printers are Energy Star compliant and have advanced eco settings which help reduce energy usage and saves money.

**Glossary**

B/W - Black and White Printing Only

Color - Color or Black and White Printing

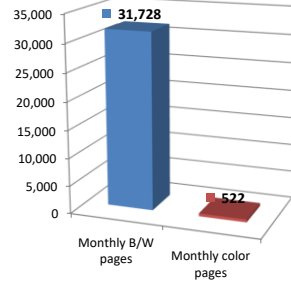
Duplex - Printing on both sides of the paper.

Simplex - Single Sided Printing

### Chart 3 – Volume of Pages Printed

This provides your printed page volumes for the previous month for both B/W and color print jobs. In addition, a utilization percentage is calculated by comparing your print volume for each printer to the maximum monthly volume capacity for that printer model.

Color/Mono Pages Printed



**Volume of pages printed**

Monthly B/W pages	31,728
Monthly color pages	522
Total monthly pages	32,250
Color page %	2%
Utilization %	3%

[Do you know if all of your printers are being used and how much?](#)

**Knowing where volumes are created helps identify areas for consolidation and helps you select the most efficient printers for replacement.**

[Are you printing a large amount of color volume?](#)

**Controlling color volume, which typically costs more than black and white, can help your school save money.**

### Chart 4 – Duplex Breakdown

This section shows the percentage of duplexed (double-sided) pages printed along with your duplex opportunity. Duplex opportunity is the total number of pages that could be printed duplex and does not include single page documents. Keep in mind, only the newer printers report duplex statistics. The duplex opportunity shows the prior month's print volume, from the printers with duplex statistics, that could have been duplexed.

Duplex Vs. Simplex



**Duplex breakdown**

Duplex opportunity	Info Not Available
Duplex	0%

[Did you know that your printers are able to print on both back and front of the page?](#)

**Increasing your school's use of double sided printing helps reduce your environmental impact and will help your school save money.**

[The average duplex rate for the NYC DOE is 14%](#)

**A modest improvement in duplex of 10% would reduce the carbon footprint by over 435,000 pounds of CO<sub>2</sub> per year, and save the DOE over \$78,000 in paper costs annually.**

[Lexmark printers 6 years and younger all have duplex capability. The following duplex initiatives can reduce paper consumption and save money:](#)

- Setting duplex as your default setting on your printer**
- Educating end users about the benefit of duplex printing.**

[For more information on how the DOE is focused on Sustainability check: <http://schools.nyc.gov/community/facilities/sustainability/about/>](#)

## Actions you can take to Save your School Money

- Use highest yield toner whenever possible to lower the cost per page.
- Consider replacing printers over 6 years old to optimize eco-friendly printer environment.
- Duplex multiple page documents when possible to reduce paper usage.

**Printer details**

Model	Serial Number	Age in Years	Utilization	ATS Printer	Avg Mono Pages	Avg Color Pages	Avg Monthly Volume
C736dn	94462M4	8	7%		154	520	674

E250dn	62040BD	13				
E250dn	7210CML	15				
E250dn	62040F4	13				
E250dn	7210CDX	15				
E342n	62040DY	12				
E352dn	6235GLK	11				
E352dn	6235GL4	11	1%	76		76
E352dn	621N4Z7	12				
E360dn	72M1G5C	11				
E360dn	72M1GDG	11				
E460dn	72HYCVR	8				
E460dn	72HP271	8				
E460dn	72HP273	8				
E460dn	72HYVH1	8				
E460dn	72HP26G	8				
E460dn	72HYTC0	7	16%	1617		1617
E460dn	72HYTBR	7	20%	1988		1988
M810de Low Volt	4063259902867	7				
MS510dn	451433HH10VL0	6	4%	571		571
MS510dn	451433HH10VKM	6				
MS510dn	45145PHH2VY1Z	4				
MS510dn	45145PHH2VY7R	4	2%	216		216
MS510dn	45145PHH2VY2F	4	5%	702		702
MS510dn	45145PHH2VXV6	4	2%	326		326
MS510dn	451433HH10VL6	6	7%	997		997
MS510dn	451433HH10VKV	6	5%	733		733
MS510dn	451445HH2139W	5	6%	816		816
MS510DN	45147GHH3XD XR	3	0%	65		65
MS510dn	45145PHH2VY2Y	4				
MS510dn	45145PHH2VXVN	4	4%	501		501
MS510dn	45145PHH2VY5W	4				
MS510dn	451420HH05Z5V	7	20%	2798		2798
MS510dn	451445HH22WGD	5	10%	1450		1450
MS510dn	451445HH22WDD	5	1%	127		127
MS510dn	451445HH22WH5	5				
MS510dn	451433HH10VK6	6	5%	714		714
MS510DN	45147GHH3XD XD	3	15%	2158		2158
MS510dn	451433HH10VK1	6	10%	1384		1384
MS510DN	45147GHH3TZ7Z	3	18%	2559		2559
MS510dn	45145PHH2VY7V	4	5%	765		765
MS510dn	451433HH10VKP	6	11%	1519		1519
MS510dn	451445HH21394	5				
MS510DN	45147GHH3TZ7N	3	17%	2441		2441
MS510DN	45147GHH3XD XN	3				
MS510DN	45147GHH3XD XZ	3				
MS510DN	45147GHH3XD X9	3	15%	2049		2049
MS621DN	460090200LVYP	1				
MS621DN	460090200LVZ2	1				
MS621DN	460090200LVZ3	1				
MS621DN	460090200LVZ4	1				
MS621DN	460090200LWOK	1				
MS621DN	460090200LW0P	1				
MS621DN	460090730NMMP	1				
MS621DN	460090730NMRP	1				
MS621DN	460090730NMR4	1				
MS621DN	460090730NMR7	1				
MS810	451433HH10VKL	6	1%	472		472
MS810de	4063369908LLC	6				
MS810DE	40636C6604LH5	3	2%	488		488
MS822DE	4064902014L78	1	2%	995		995
MX711DHE	74637C6600B02	3	7%	1854	Yes	1854
T630n	991KGKY	16				
T640n	792VBRF	11			Yes	
T650dn	7950G6W	4			Yes	

<< More data continued on Next Page >>

25Q107 - Jan 2020 - Page 3

### Printer Details - Page 2

Model	Serial Number	Age in Years	Utilization	ATS Printer	Avg Mono Pages	Avg Color Pages	Avg Monthly Volume
X364dn	35029K8	10	8%		388		388
X364dn	3502XV8	10	10%		478		478
X748de	7526519440PF3	7	3%	Yes	327	2	329
0	0	0					

