

Please find enclosed a snap shot of your school's printer environment. The printer breakdown and data encompasses only the printers we can see on your network. You may have additional printers that are locally connected (e.g. USB attached), but those are not included in this breakdown.

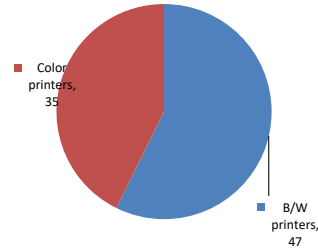
Chart 1 – School Printer Breakdown

This provides your school's enrollment, along with the number of printers, including the distribution between B/W and color printers.

Flushing High School

Enrollment	1536
B/W printers	47
Color printers	35
Total printers	82

Color/Mono Device Breakdown



From the list provided on page 3 are all of your printers represented? If not, how many are missing Providing Lexmark the asset data that is missing will allow us to give you a more accurate picture of your printer environment.

Do you know how many printers you have in your main office, compared to the number of people who sit in the main office? Reducing the number of devices and using the most efficient models in the right locations can help your school save money.

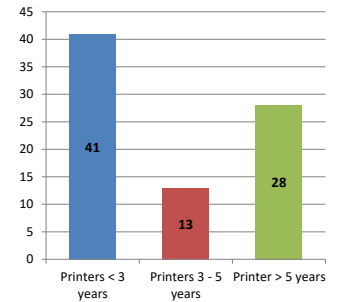
Chart 2 – Printer Age Statistics

Here we show the average age of your printers and show the distribution among 3 age categories; under 3 years old, 3-5 years old and over 5 years old.

Printer Age Statistics

Average Age (years)	4
Printers < 3 years	41
Printers 3 - 5 years	13
Printer > 5 years	28

Printer Age Statistics



The age of your printer fleet plays a large role in your annual printer maintenance and toner cost. The DOE only supports printers 6 years and younger.

Once the warranty expires and the age of your device exceeds 6 years, maintenance and repairs become very costly.

New printers have higher toner yields than older printers, resulting in lower cost per page which saves money.

Newer printers are Energy Star compliant and have advanced eco settings which help reduce energy usage and saves money.

Glossary

B/W - Black and White Printing Only

Color - Color or Black and White Printing

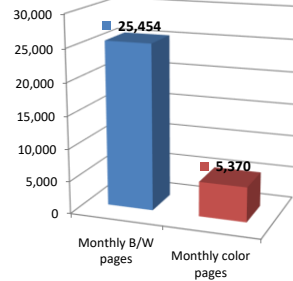
Duplex - Printing on both sides of the paper.

Simplex - Single Sided Printing

Chart 3 – Volume of Pages Printed

This provides your printed page volumes for the previous month for both B/W and color print jobs. In addition, a utilization percentage is calculated by comparing your print volume for each printer to the maximum monthly volume capacity for that printer model.

Color/Mono Pages Printed



Volume of pages printed

Monthly B/W pages	25,454
Monthly color pages	5,370
Total monthly pages	30,824
Color page %	17%
Utilization %	2%

[Do you know if all of your printers are being used and how much?](#)

Knowing where volumes are created helps identify areas for consolidation and helps you select the most efficient printers for replacement.

[Are you printing a large amount of color volume?](#)

Controlling color volume, which typically costs more than black and white, can help your school save money.

Chart 4 – Duplex Breakdown

This section shows the percentage of duplexed (double-sided) pages printed along with your duplex opportunity. Duplex opportunity is the total number of pages that could be printed duplex and does not include single page documents. Keep in mind, only the newer printers report duplex statistics. The duplex opportunity shows the prior month's print volume, from the printers with duplex statistics, that could have been duplexed.

Duplex Vs. Simplex



Duplex breakdown

Duplex opportunity	1,410
Duplex	0%

[Did you know that your printers are able to print on both back and front of the page?](#)

Increasing your school's use of double sided printing helps reduce your environmental impact and will help your school save money.

[The average duplex rate for the NYC DOE is 14%](#)

A modest improvement in duplex of 10% would reduce the carbon footprint by over 435,000 pounds of CO₂ per year, and save the DOE over \$78,000 in paper costs annually.

[Lexmark printers 6 years and younger all have duplex capability. The following duplex initiatives can reduce paper consumption and save money:](#)

Setting duplex as your default setting on your printer

Educating end users about the benefit of duplex printing.

[For more information on how the DOE is focused on Sustainability check:](#)

<http://schools.nyc.gov/community/facilities/sustainability/about/>

Actions you can take to Save your School Money

Use highest yield toner whenever possible to lower the cost per page.
 Consider replacing printers over 6 years old to optimize eco-friendly printer environment.
 Duplex multiple page documents when possible to reduce paper usage.

Printer details

Model	Serial Number	Age in Years	Utilization	ATS Printer	Avg Mono Pages	Avg Color Pages	Avg Monthly Volume
C544dn	9469CP5	8					

C544dn	9469CP1	8		Yes			
C544dw	9468FVB	8					
C748de	5026449425K7N	4	22%		2	2219	2221
C748de	5026449425K7Z	4	1%		28	50	78
C782n	940VDMK	11	0%		3	50	53
CS510DE	502752945H5WM	3	15%		176	868	1044
CS510DE	502730946FFB4	3					
CX510DE	752739946FMF3	3	11%		203	561	764
CX510de	7527039463XBX	6	6%		230	159	389
CX510DE	752741946FRZK	3					
CX510DE	752742946FWWB	3					
CX510DE	752742946FWWK	3					
CX510DE	752709946TH4Z	2					
CX510DE	752709946TH5H	2					
CX510DE	752709946TH5M	2					
CX510DE	752709946TH5R	2					
CX510DE	752709946TH5W	2					
CX510DE	752709946TH56	2					
CX510DE	752710946TMWC	2					
CX510DE	752710946TMYC	2					
CX622ADE	7529836140VPC	1					
CX622ADE	7529836140VPH	1					
CX622ADE	7529836140VPP	1					
CX622ADE	7529836140VR3	1					
CX622ADE	7529836140VR4	1					
CX622ADE	7529838140ZHC	1					
CX622ADE	7529838140ZMK	1					
CX622ADE	7529838140ZM5	1					
CX622ADE	7529838140ZM9	1					
CX622ADE	7529838140ZNM	1					
CX622ADE	7529838140ZN1	1					
CX622ADE	7529838140ZL7	1					
CX725DHE	7528648010TTF	3	10%	Yes	690	1222	1912
E460dn	72HMMWG6	8					
E460dn	72HMMWFN	8	11%		1067		1067
E460dn	72HMMWGN	8					
E460dn	72HMMWH1	8					
E460dn	72HMMWGM	8					
MS510dn	451431HH0CZ23	7					
MS510DN	45148PHH4P3DD	2	5%		680		680
MS510DN	45148PHH4P3GR	2					
MS510DN	45148PHH4P3GV	2					
MS510DN	45148PHH4P3GX	2					
MS510DN	45148PHH4P3GY	2					
MS510DN	45148PHH4P3GZ	2					
MS510DN	45148PHH4P3H2	2					
MS510DN	45148PHH4P3H6	2					
MS510DN	45148PHH4P3H7	2					
MS510DN	45148PHH4P37D	2					
MS621DN	460083700D8YB	1	0%		62		62
MS621DN	460083700D8YG	1					
MS621DN	460083700D8YW	1					
MS621DN	460083700D8Y0	1					
MS621DN	460083700D8Y7	1					
MS810	45146PHH2ZPWF	4					
MS810DE	40637C660044P	3					
MS810de	4063369906CKC	6	12%	Yes	2357		2357
MS810de	4063369906CHX	6	41%	Yes	8106		8106
MS810DE	40637C660044Y	3	10%		1928		1928
MS810DE	40637C660044Z	3	0%		3		3
MS810DE	40638D6600BLY	2					
MX511dhe	701533HH08X0T	6					
MX511DHE	70156PHH18YVK	3	10%		1156		1156
MX522ADHE	701791630B3NY	1					

<< More data continued on Next Page >>

25Q460 - Jan 2020 - Page 3

Printer Details - Page 2

Model	Serial Number	Age in Years	Utilization	ATS Printer	Avg Mono Pages	Avg Color Pages	Avg Monthly Volume
MX711DHE	74637C660003R	3	8%		1917		1917
MX722ADHE	74649310224WF	0					
T640n	7915RG9	13					
T644n	790Y4GR	13					

