

Please find enclosed a snap shot of your school's printer environment. The printer breakdown and data encompasses only the printers we can see on your network. You may have additional printers that are locally connected (e.g. USB attached), but those are not included in this breakdown.

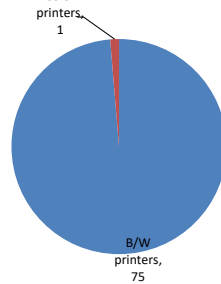
**Chart 1 – School Printer Breakdown**

This provides your school's enrollment, along with the number of printers, including the distribution between B/W and color printers.

**Irwin Altman Middle School 172**

Enrollment	1007
B/W printers	75
Color printers	1
Total printers	76

**Color/Mono Device Breakdown**



From the list provided on page 3 are all of your printers represented? If not, how many are missing Providing Lexmark the asset data that is missing will allow us to give you a more accurate picture of your printer environment.

Do you know how many printers you have in your main office, compared to the number of people who sit in the main office? Reducing the number of devices and using the most efficient models in the right locations can help your school save money.

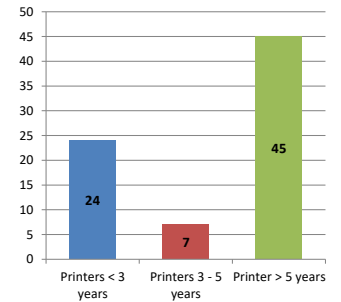
**Chart 2 – Printer Age Statistics**

Here we show the average age of your printers and show the distribution among 3 age categories; under 3 years old, 3-5 years old and over 5 years old.

**Printer Age Statistics**

Average Age (years)	7
Printers < 3 years	24
Printers 3 - 5 years	7
Printer > 5 years	45

**Printer Age Statistics**



The age of your printer fleet plays a large role in your annual printer maintenance and toner cost. The DOE only supports printers 6 years and younger.

Once the warranty expires and the age of your device exceeds 6 years, maintenance and repairs become very costly.

New printers have higher toner yields than older printers, resulting in lower cost per page which saves money.

Newer printers are Energy Star compliant and have advanced eco settings which help reduce energy usage and saves money.

**Glossary**

B/W - Black and White Printing Only

Color - Color or Black and White Printing

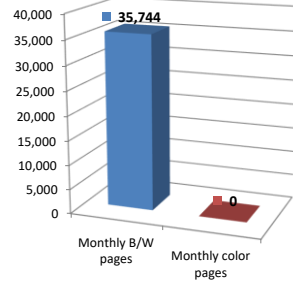
Duplex - Printing on both sides of the paper.

Simplex - Single Sided Printing

### Chart 3 – Volume of Pages Printed

This provides your printed page volumes for the previous month for both B/W and color print jobs. In addition, a utilization percentage is calculated by comparing your print volume for each printer to the maximum monthly volume capacity for that printer model.

Color/Mono Pages Printed



#### Volume of pages printed

Monthly B/W pages	35,744
Monthly color pages	0
Total monthly pages	35,744
Color page %	0%
Utilization %	4%

[Do you know if all of your printers are being used and how much?](#)

**Knowing where volumes are created helps identify areas for consolidation and helps you select the most efficient printers for replacement.**

[Are you printing a large amount of color volume?](#)

**Controlling color volume, which typically costs more than black and white, can help your school save money.**

### Chart 4 – Duplex Breakdown

This section shows the percentage of duplexed (double-sided) pages printed along with your duplex opportunity. Duplex opportunity is the total number of pages that could be printed duplex and does not include single page documents. Keep in mind, only the newer printers report duplex statistics. The duplex opportunity shows the prior month's print volume, from the printers with duplex statistics, that could have been duplexed.

Duplex Vs. Simplex



#### Duplex breakdown

Duplex opportunity	Info Not Available
Duplex	0%

[Did you know that your printers are able to print on both back and front of the page?](#)

**Increasing your school's use of double sided printing helps reduce your environmental impact and will help your school save money.**

[The average duplex rate for the NYC DOE is 14%](#)

**A modest improvement in duplex of 10% would reduce the carbon footprint by over 435,000 pounds of CO<sub>2</sub> per year, and save the DOE over \$78,000 in paper costs annually.**

[Lexmark printers 6 years and younger all have duplex capability. The following duplex initiatives can reduce paper consumption and save money:](#)

**Setting duplex as your default setting on your printer**

**Educating end users about the benefit of duplex printing.**

[For more information on how the DOE is focused on Sustainability check:](#)

<http://schools.nyc.gov/community/facilities/sustainability/about/>

## Actions you can take to Save your School Money

- Use highest yield toner whenever possible to lower the cost per page.
- Consider replacing printers over 6 years old to optimize eco-friendly printer environment.
- Duplex multiple page documents when possible to reduce paper usage.

#### Printer details

Model	Serial Number	Age in Years	Utilization	ATS Printer	Avg Mono Pages	Avg Color Pages	Avg Monthly Volume
E250dn	72BKT7W	14					

E250dn	72BKTHZ	14			
E250dn	72BKTG9	14			
E332n	380GKY2	6			
E352dn	620H6NG	13			
E352dn	621DNXX	12	1%	45	45
E352dn	621DNZF	12			
E352dn	621DNY5	12			
E352dn	621DNXF	12			
E352dn	621DNY8	12	3%	186	186
E352dn	622GLXV	12			
E352dn	621DNYF	12			
E352dn	621DNZ4	12	5%	287	287
E360dn	72M3M3W	11	8%	499	499
E460dn	72HH7DC	9	8%	774	774
E460dn	72HH7DN	9	3%	279	279
E460dn	72HHF58	9	3%	325	325
E460dn	72HH7D8	9	18%	1766	1766
E460dn	72HHDRY	9	8%	849	849
E460dn	72HHDGH	9	4%	429	429
E460dn	72HH7DP	9			
E460dn	72HHDRP	9	4%	363	363
E460dn	72HH7DV	9	1%	87	87
E460dn	72HH7DX	9	2%	156	156
MS510dn	451431HH095X1	5	3%	360	360
MS510DN	45147GHH3RD62	3	2%	283	283
MS510DN	45147GHH3RBW5	3	13%	1866	1866
MS510DN	45147GHH3RD5Y	3			
MS510dn	45145PHH2VY2H	4	4%	561	561
MS510dn	45145PHH2VY22	4	16%	2178	2178
MS510DN	45148PHH4P372	2	1%	108	108
MS510dn	45145PHH2VY2P	4	5%	632	632
MS510DN	45148PHH4P36D	2			
MS510DN	45147GHH3RBY4	3	3%	390	390
MS510DN	45147GHH3RBYN	3	11%	1561	1561
MS510DN	45147GHH3RD57	3	4%	629	629
MS510DN	45147GHH3RBY6	3	7%	1045	1045
MS510dn	45145PHH2VY2N	4	0%	52	52
MS510dn	45145PHH2VY2G	4	3%	472	472
MS510DN	45148PHH4P34Y	2	17%	2376	2376
MS510dn	451432HH0Y31N	6			
MS510dn	451431HH095XN	6			
MS510dn	451431HH095X2	7			
MS510DN	45148PHH4P36G	2			
MS510dn	451432HH0XZB7	6	0%	13	13
MS510dn	451431HH095XL	7	1%	190	190
MS510dn	451431HH095V3	4	3%	430	430
MS510dn	451444HH18X45	6	6%	777	777
MS510dn	451431HH095X9	7	39%	5494	5494
MS510dn	451431HH095XH	7	1%	188	188
MS510DN	45147GHH3RBYF	3	1%	114	114
MS510DN	45147GHH3RD70	3	13%	1880	1880
MS510dn	451432HH0XZ9V	6	1%	138	138
MS510DN	45148PHH4P34H	2	6%	816	816
MS510dn	451431HH095XD	6			
MS510DN	45148PHH4P371	2	10%	1345	1345
MS510dn	451431HH095X5	7	1%	175	175
MS510DN	45147GHH3RD6X	3			
MS621DN	4600820004MFR	1			
MS621DN	460090530NF4B	1			
MS621DN	460090530NF5D	1			
MS621DN	460090530NF7G	1			
MS621DN	460090530NF7K	1			
MS621DN	460090530NF7M	1	2%	335	335
MS621DN	460090530NF70	1			

<< More data continued on Next Page >>

26Q172 - Jan 2020 - Page 3

### Printer Details - Page 2

Model	Serial Number	Age in Years	Utilization	ATS Printer	Avg Mono Pages	Avg Color Pages	Avg Monthly Volume
MX511dhe	701544HH0K8PP	5		Yes			
MX711dhe	746336990592W	6	14%	Yes	3472		3472
MX711DHE	74636C660105M	3					
Opra SVCS1620	41TR392	17					

