

Lexmark Managed Print Services Monthly Report: Jan 2020
26Q186 - P.S. 186 Castlewood, 252-12 72 Avenue, Queens, NY 11426-2728

Please find enclosed a snap shot of your school's printer environment. The printer breakdown and data encompasses only the printers we can see on your network. You may have additional printers that are locally connected (e.g. USB attached), but those are not included in this breakdown.

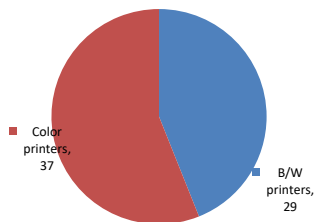
Chart 1 – School Printer Breakdown

This provides your school's enrollment, along with the number of printers, including the distribution between B/W and color printers.

P.S. 186 Castlewood

Enrollment	370
B/W printers	29
Color printers	37
Total printers	66

Color/Mono Device Breakdown



From the list provided on page 3 are all of your printers represented? If not, how many are missing Providing Lexmark the asset data that is missing will allow us to give you a more accurate picture of your printer environment.

Do you know how many printers you have in your main office, compared to the number of people who sit in the main office? Reducing the number of devices and using the most efficient models in the right locations can help your school save money.

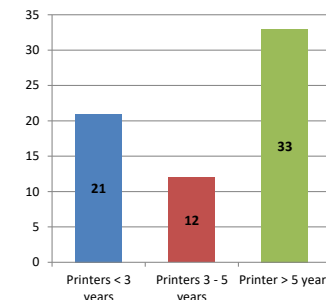
Chart 2 – Printer Age Statistics

Here we show the average age of your printers and show the distribution among 3 age categories; under 3 years old, 3-5 years old and over 5 years old.

Printer Age Statistics

Average Age (years)	5
Printers < 3 years	21
Printers 3 - 5 years	12
Printer > 5 years	33

Printer Age Statistics



The age of your printer fleet plays a large role in your annual printer maintenance and toner cost. The DOE only supports printers 6 years and younger.

Once the warranty expires and the age of your device exceeds 6 years, maintenance and repairs become very costly.

New printers have higher toner yields than older printers, resulting in lower cost per page which saves money.

Newer printers are Energy Star compliant and have advanced eco settings which help reduce energy usage and saves money.

Glossary

B/W - Black and White Printing Only

Color - Color or Black and White Printing

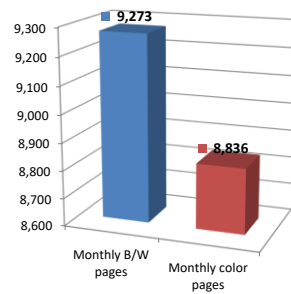
Duplex - Printing on both sides of the paper.

Simplex - Single Sided Printing

Chart 3 – Volume of Pages Printed

This provides your printed page volumes for the previous month for both B/W and color print jobs. In addition, a utilization percentage is calculated by comparing your print volume for each printer to the maximum monthly volume capacity for that printer model.

Color/Mono Pages Printed



Volume of pages printed

Monthly B/W pages	9,273
Monthly color pages	8,836
Total monthly pages	18,109
Color page %	49%
Utilization %	2%

[Do you know if all of your printers are being used and how much?](#)

Knowing where volumes are created helps identify areas for consolidation and helps you select the most efficient printers for replacement.

[Are you printing a large amount of color volume?](#)

Controlling color volume, which typically costs more than black and white, can help your school save money.

Chart 4 – Duplex Breakdown

This section shows the percentage of duplexed (double-sided) pages printed along with your duplex opportunity. Duplex opportunity is the total number of pages that could be printed duplex and does not include single page documents. Keep in mind, only the newer printers report duplex statistics. The duplex opportunity shows the prior month's print volume, from the printers with duplex statistics, that could have been duplexed.

Duplex Vs. Simplex



Duplex breakdown

Duplex opportunity	Info Not Available
Duplex	0%

[Did you know that your printers are able to print on both back and front of the page?](#)

Increasing your school's use of double sided printing helps reduce your environmental impact and will help your school save money.

[The average duplex rate for the NYC DOE is 14%](#)

A modest improvement in duplex of 10% would reduce the carbon footprint by over 435,000 pounds of CO₂ per year, and save the DOE over \$78,000 in paper costs annually.

[Lexmark printers 6 years and younger all have duplex capability. The following duplex initiatives can reduce paper consumption and save money:](#)

- Setting duplex as your default setting on your printer**
- Educating end users about the benefit of duplex printing.**

[For more information on how the DOE is focused on Sustainability check: <http://schools.nyc.gov/community/facilities/sustainability/about/>](#)

Actions you can take to Save your School Money

- Use highest yield toner whenever possible to lower the cost per page.
- Consider replacing printers over 6 years old to optimize eco-friendly printer environment.
- Duplex multiple page documents when possible to reduce paper usage.

Printer details

Model	Serial Number	Age in Years	Utilization	ATS Printer	Avg Mono Pages	Avg Color Pages	Avg Monthly Volume
C736dn	94471F2	8					

C748de	5026499422R44	6					
CS510DE	502743945GKP5	3	9%	248	410	658	
CS510DE	502743945GKNY	3					
CS510DE	502708946VC18	2					
CS510DE	502743945GKP3	3					
CS510DE	502743945GKNW	3					
CS510DE	502708946VBX0	2					
CS510DE	502708946VC2R	2	0%	25	4	29	
CS510DE	502743945GKP1	3					
CS510DE	502743945GKNZ	3					
CS510DE	502708946VC2K	2	10%	204	511	715	
CS510DE	502708946VC2N	2	0%	1		1	
CS510DE	502708946VC27	2					
CS622DE	502982904FRW	1					
CS622DE	502982904FR7	1	15%	995	498	1493	
CS622DE	502990104188P	1					
CS622DE	5029903041BW2	1	0%	1	3	4	
CS622DE	5029908041L8G	1					
CS622DE	5029908041L85	1					
CS622DE	5029908041L88	1					
CS622DE	5029908041L89	1					
CS725DE	5028815012L4C	2	8%	372	1186	1558	
CS725DE	5028815012L3P	2	7%	319	1127	1446	
CX510de	75274294638XF	6	7%	275	231	506	
CX510de	75274994605KV	7					
CX510de	75274294638X2	6					
CX510DE	752722946D417	3	59%	745	3373	4118	
CX510de	7527059460F4N	7					
CX510de	7527059460F32	7					
CX510de	75274294638W5	6					
CX510de	75274294638XP	6					
CX510DE	752722946D3YZ	3	7%	92	364	456	
CX510de	7527059460F4P	7					
CX510DE	752709946TH7P	2					
E352dn	621805N	12					Yes
E460dn	72HFKDP	9					
E460dn	72HH451	8					
E460dw	72HWP04	8					
E460dw	72HWNRV	8					
MS510DN	45146PHH32NFK	4	5%	635		635	
MS510DN	45146PHH32K48	4					
MS510DN	45147GHH4D76K	2	1%	185		185	Yes
MS510DN	45148GHH4MHNF	2					
MS810DE	40638D6600HFT	2	4%	740		740	
MS810DE	40638D6600HBY	2	3%	522		522	
T650dn	7932YD8	10					
T650n	7959V0W	8					
T650n	7959XG2	8					
T650n	7959TZG	8					
T650n	7959V0T	8	15%	3014		3014	
T650n	7959X5Z	8					
T650n	7959XHT	8					
T650n	7959V07	8					
T650n	7959XGG	8					
T650n	7959XKR	8					
T650n	7959TZ2	8					
T650n	7959V01	8					
T650n	7959V09	8					
T650n	7959V06	8					
T650n	79411G5	6					
T650n	7932L26	9					
T650n	7959XDZ	8					
T650n	7959XDN	8					
X748de	7526209442B43	4					Yes

<< More data continued on Next Page >>

26Q186 - Jan 2020 - Page 3

Printer Details - Page 2

Model	Serial Number	Age in Years	Utilization	ATS Printer	Avg Mono Pages	Avg Color Pages	Avg Monthly Volume
X748de	7526209442B4Z	4	20%	Yes	900	1129	2029
0	0	0					
0	0	0					
0	0	0					

