

Please find enclosed a snap shot of your school's printer environment. The printer breakdown and data encompasses only the printers we can see on your network. You may have additional printers that are locally connected (e.g. USB attached), but those are not included in this breakdown.

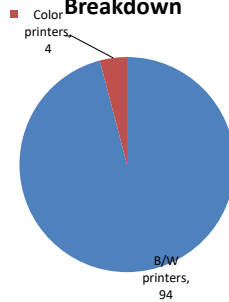
Chart 1 – School Printer Breakdown

This provides your school's enrollment, along with the number of printers, including the distribution between B/W and color printers.

Queens High School Of Teaching, Liberal Arts And T

Enrollment	1029
B/W printers	94
Color printers	4
Total printers	98

Color/Mono Device Breakdown



From the list provided on page 3 are all of your printers represented? If not, how many are missing Providing Lexmark the asset data that is missing will allow us to give you a more accurate picture of your printer environment.

Do you know how many printers you have in your main office, compared to the number of people who sit in the main office? Reducing the number of devices and using the most efficient models in the right locations can help your school save money.

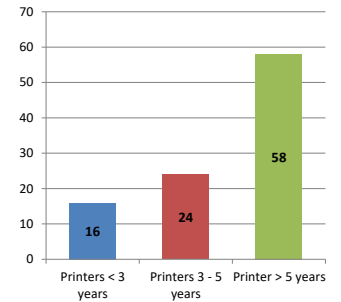
Chart 2 – Printer Age Statistics

Here we show the average age of your printers and show the distribution among 3 age categories; under 3 years old, 3-5 years old and over 5 years old.

Printer Age Statistics

Average Age (years)	5
Printers < 3 years	16
Printers 3 - 5 years	24
Printer > 5 years	58

Printer Age Statistics



The age of your printer fleet plays a large role in your annual printer maintenance and toner cost. The DOE only supports printers 6 years and younger.

Once the warranty expires and the age of your device exceeds 6 years, maintenance and repairs become very costly.

New printers have higher toner yields than older printers, resulting in lower cost per page which saves money.

Newer printers are Energy Star compliant and have advanced eco settings which help reduce energy usage and saves money.

Glossary

B/W - Black and White Printing Only

Color - Color or Black and White Printing

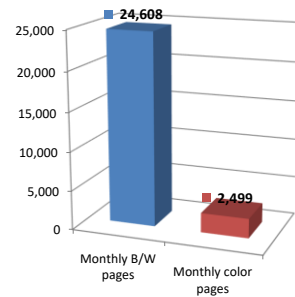
Duplex - Printing on both sides of the paper.

Simplex - Single Sided Printing

Chart 3 – Volume of Pages Printed

This provides your printed page volumes for the previous month for both B/W and color print jobs. In addition, a utilization percentage is calculated by comparing your print volume for each printer to the maximum monthly volume capacity for that printer model.

Color/Mono Pages Printed



Volume of pages printed

Monthly B/W pages	24,608
Monthly color pages	2,499
Total monthly pages	27,107
Color page %	9%
Utilization %	2%

[Do you know if all of your printers are being used and how much?](#)

Knowing where volumes are created helps identify areas for consolidation and helps you select the most efficient printers for replacement.

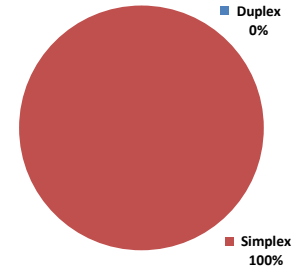
[Are you printing a large amount of color volume?](#)

Controlling color volume, which typically costs more than black and white, can help your school save money.

Chart 4 – Duplex Breakdown

This section shows the percentage of duplexed (double-sided) pages printed along with your duplex opportunity. Duplex opportunity is the total number of pages that could be printed duplex and does not include single page documents. Keep in mind, only the newer printers report duplex statistics. The duplex opportunity shows the prior month's print volume, from the printers with duplex statistics, that could have been duplexed.

Duplex Vs. Simplex



Duplex breakdown

Duplex opportunity	Info Not Available
Duplex	0%

[Did you know that your printers are able to print on both back and front of the page?](#)

Increasing your school's use of double sided printing helps reduce your environmental impact and will help your school save money.

[The average duplex rate for the NYC DOE is 14%](#)

A modest improvement in duplex of 10% would reduce the carbon footprint by over 435,000 pounds of CO₂ per year, and save the DOE over \$78,000 in paper costs annually.

[Lexmark printers 6 years and younger all have duplex capability. The following duplex initiatives can reduce paper consumption and save money:](#)

Setting duplex as your default setting on your printer

Educating end users about the benefit of duplex printing.

[For more information on how the DOE is focused on Sustainability check:](#)

<http://schools.nyc.gov/community/facilities/sustainability/about/>

Actions you can take to Save your School Money

- Use highest yield toner whenever possible to lower the cost per page.
- Consider replacing printers over 6 years old to optimize eco-friendly printer environment.
- Duplex multiple page documents when possible to reduce paper usage.

Printer details

Model	Serial Number	Age in Years	Utilization	ATS Printer	Avg Mono Pages	Avg Color Pages	Avg Monthly Volume
CS510de	451444HH1C0BX	4					

CS510de	5027459450BW6	4	1%		8	63	71
CX510de	7527039463XB4	6	3%		37	146	183
CX725DHE	75288040126VG	2	16%		971	2290	3261
E250dn	62040N1	13					
LaserjetP2055	CNB9031150	10	25%		750		750
MS510dn	451444HH1L64G	4					
MS510DN	45146PHH32K4T	4					
MS510DN	45146PHH37T7B	3	3%		397		397
MS510DN	45147GHH3Y85R	3					
MS510dn	451444HH18WXP	6					
MS510dn	451444HH1BZV8	6	1%		178		178
MS510dn	451444HH1F2FW	6					
MS510dn	451444HH18WXX	6					
MS510dn	451444HH18X1F	6					
MS510dn	451444HH1C081	6					
MS510dn	451444HH1L64K	6	1%		129		129
MS510dn	451444HH1F24R	6					
MS510dn	451444HH18WXC	6					
MS510dn	451444HH1F2F8	6					
MS510dn	451444HH1L64X	6	5%		713		713
MS510dn	451444HH1F2FV	6	1%		122		122
MS510dn	451444HH18WXF	6					
MS510dn	451444HH1L64H	6	4%		613		613
MS510dn	451444HH1F2FK	6					
MS510dn	451444HH18WXV	6					
MS510dn	451444HH1F2FN	6	1%		111		111
MS510dn	451444HH18WX8	6					
MS510dn	451444HH18WW5	6					
MS510dn	451444HH1F2G0	4					
MS510dn	451444HH1F243	6					
MS510dn	451444HH1C08H	6					
MS510dn	451444HH1F2F7	6	1%		141		141
MS510dn	451444HH1L633	6					
MS510dn	451444HH18WY9	6	9%		1273		1273
MS510dn	451444HH1L64F	6					
MS510dn	451444HH18WXD	6	4%		519		519
MS510dn	451444HH1F2DW	6					
MS510dn	451444HH18WXL	6	4%		553		553
MS510dn	451444HH18WXM	6	3%		443		443
MS510dn	451444HH1L64P	6	5%		684		684
MS510dn	451444HH18WW9	6	15%		2033		2033
MS510dn	451444HH1BZK9	6	1%		168		168
MS510dn	451444HH1L64L	6	12%		1739		1739
MS510dn	451444HH18WXH	6					
MS510DN	45147GHH3Y860	3	11%	Yes	1585		1585
MS510dn	451444HH1C086	6	3%		350		350
MS510dn	451444HH18WY4	6	3%		352		352
MS510dn	451444HH18WY0	6	1%		87		87
MS510dn	451444HH1F2BP	6					
MS510dn	451444HH18WWL	6	1%		72		72
MS510dn	451444HH18WY1	6	0%		52		52
MS510dn	451444HH1L64B	6					
MS510dn	451444HH1C0BG	6	2%	Yes	345		345
MS510DN	45147GHH4H212	2	2%	Yes	259		259
MS510dn	451444HH1L651	6					
MS510dn	451444HH1C0B4	6	16%		2251		2251
MS510dn	451444HH18WXN	6					
MS510dn	451444HH1F2FC	6					
MS510DN	45146PHH37T79	3					
MS510DN	45146PHH37T4R	3					
MS510DN	45146PHH37T7C	3					
MS510DN	45146PHH37T7F	3					
MS510DN	45146PHH37T7G	3					
MS510DN	45146PHH37T70	3	0%		22		22

<< More data continued on Next Page >>

26Q566 - Jan 2020 - Page 3

Printer Details - Page 2

Model	Serial Number	Age in Years	Utilization	ATS Printer	Avg Mono Pages	Avg Color Pages	Avg Monthly Volume
MS510DN	45146PHH37T71	3					
MS510DN	45146PHH37T72	3					
MS510DN	45146PHH37T75	3	8%		1185		1185
MS510DN	45146PHH37T76	3					

