

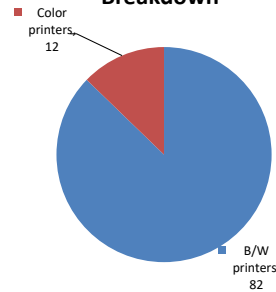
**Lexmark Managed Print Services Monthly Report: Jan 2020**  
**27Q060 - P.S. 060 Woodhaven, 91-02 88Th Avenue, Queens, NY 11421**

Please find enclosed a snap shot of your school's printer environment. The printer breakdown and data encompasses only the printers we can see on your network. You may have additional printers that are locally connected (e.g. USB attached), but those are not included in this breakdown.

**Chart 1 – School Printer Breakdown**

This provides your school's enrollment, along with the number of printers, including the distribution between B/W and color printers.

**Color/Mono Device Breakdown**



**P.S. 060 Woodhaven**

Enrollment	1148
B/W printers	82
Color printers	12
Total printers	94

From the list provided on page 3 are all of your printers represented? If not, how many are missing  
**Providing Lexmark the asset data that is missing will allow us to give you a more accurate picture of your printer environment.**

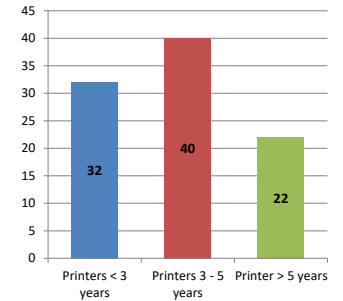
Do you know how many printers you have in your main office, compared to the number of people who sit in the main office?

**Reducing the number of devices and using the most efficient models in the right locations can help your school save money.**

**Chart 2 – Printer Age Statistics**

Here we show the average age of your printers and show the distribution among 3 age categories; under 3 years old, 3-5 years old and over 5 years old.

**Printer Age Statistics**



**Printer Age Statistics**

Average Age (years)	4
Printers < 3 years	32
Printers 3 - 5 years	40
Printer > 5 years	22

The age of your printer fleet plays a large role in your annual printer maintenance and toner cost. The DOE only supports printers 6 years and younger.

**Once the warranty expires and the age of your device exceeds 6 years, maintenance and repairs become very costly.**

**New printers have higher toner yields than older printers, resulting in lower cost per page which saves money.**

**Newer printers are Energy Star compliant and have advanced eco settings which help reduce energy usage and saves money.**

**Glossary**

B/W - Black and White Printing Only

Color - Color or Black and White Printing

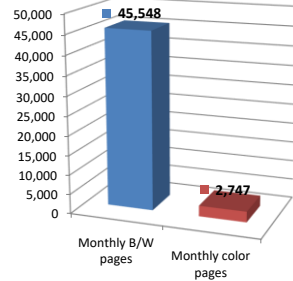
Duplex - Printing on both sides of the paper.

Simplex - Single Sided Printing

### Chart 3 – Volume of Pages Printed

This provides your printed page volumes for the previous month for both B/W and color print jobs. In addition, a utilization percentage is calculated by comparing your print volume for each printer to the maximum monthly volume capacity for that printer model.

Color/Mono Pages Printed



**Volume of pages printed**

Monthly B/W pages	45,548
Monthly color pages	2,747
Total monthly pages	48,295
Color page %	6%
Utilization %	4%

[Do you know if all of your printers are being used and how much?](#)

**Knowing where volumes are created helps identify areas for consolidation and helps you select the most efficient printers for replacement.**

[Are you printing a large amount of color volume?](#)

**Controlling color volume, which typically costs more than black and white, can help your school save money.**

### Chart 4 – Duplex Breakdown

This section shows the percentage of duplexed (double-sided) pages printed along with your duplex opportunity. Duplex opportunity is the total number of pages that could be printed duplex and does not include single page documents. Keep in mind, only the newer printers report duplex statistics. The duplex opportunity shows the prior month's print volume, from the printers with duplex statistics, that could have been duplexed.

Duplex Vs. Simplex



**Duplex breakdown**

Duplex opportunity	Info Not Available
Duplex	0%

[Did you know that your printers are able to print on both back and front of the page?](#)

**Increasing your school's use of double sided printing helps reduce your environmental impact and will help your school save money.**

[The average duplex rate for the NYC DOE is 14%](#)

**A modest improvement in duplex of 10% would reduce the carbon footprint by over 435,000 pounds of CO<sub>2</sub> per year, and save the DOE over \$78,000 in paper costs annually.**

[Lexmark printers 6 years and younger all have duplex capability. The following duplex initiatives can reduce paper consumption and save money:](#)

- Setting duplex as your default setting on your printer**
- Educating end users about the benefit of duplex printing.**

[For more information on how the DOE is focused on Sustainability check: <http://schools.nyc.gov/community/facilities/sustainability/about/>](#)

## Actions you can take to Save your School Money

- Use highest yield toner whenever possible to lower the cost per page.
- Consider replacing printers over 6 years old to optimize eco-friendly printer environment.
- Duplex multiple page documents when possible to reduce paper usage.

**Printer details**

Model	Serial Number	Age in Years	Utilization	ATS Printer	Avg Mono Pages	Avg Color Pages	Avg Monthly Volume
CSS10DE	502747946GTGD	3	11%		140	624	764

CS510DE	502747946GTGK	3	10%	18	694	712
CS510DE	502747946GTG2	3	6%	362	53	415
CS510DE	502747946GTGV	3				
CS510DE	502747946GRGK	3				
CS622DE	502982904OFL3	1	5%	373	125	498
CS622DE	50299010417VX	1				
CX510DE	752739946FMHC	3	9%	177	431	608
CX510DE	752745946R75N	2	36%	1670	820	2490
CX510de	752703946BTHP	4				
CX510de	752703946BTF1	4				
E250dn	72B66T1	14				
E250dn	72B66M3	14				
E250dn	72B66NN	14				
E342n	72B66RM	12	8%	124		124
E360dn	72M317W	11	21%	1289		1289
E360dn	72M317R	11				
E360dn	72M3184	11				
E360dn	72M3175	11				
E360dn	72M317T	11				
E460dn	72H93TN	9				
E460dn	72HFKGL	9	6%	614		614
E460dn	72HNMHP	8		Yes		
E460dn	72H93N7	9				
MS510DN	45147GHH3N4NT	3	13%	1753		1753
MS510DN	45146PHH3DGYT	3	2%	211		211
MS510DN	45147GHH3N4B8	3				
MS510DN	45147GHH3N4DN	3	7%	1029		1029
MS510DN	45147GHH3N4KW	3				
MS510DN	45147GHH3N4DP	3				
MS510DN	45147GHH3N4F0	3	9%	1212		1212
MS510DN	45146PHH3DGYT	3				
MS510DN	45147GHH3N4HH	3	8%	1138		1138
MS510DN	45146PHH3DGZ7	3				
MS510DN	45147GHH3N4NH	3				
MS510DN	45147GHH3N4DR	3	5%	679		679
MS510DN	45146PHH3DGYW	3	10%	1457		1457
MS510DN	45147GHH3N4F4	3	5%	765		765
MS510dn	451420HH05Z45	7				
MS510DN	45146PHH3DGZX	3	3%	420		420
MS510DN	45147GHH4H1CD	2	5%	740		740
MS510DN	45147GHH4H1C8	2	10%	1344		1344
MS510DN	45147GHH4H1CB	2				
MS510DN	45146PHH3DGZD	3				
MS510DN	45147GHH4HN2R	2				
MS510DN	45147GHH3N4F1	3	26%	3624		3624
MS510DN	45146PHH3DGYZ	3				
MS510DN	45147GHH3N4DL	3	9%	1266		1266
MS510DN	45146PHH3DGZ4	3	7%	1044		1044
MS510DN	45146PHH3DGZ0	3				
MS510DN	45146PHH3DGZ3	3	10%	1414		1414
MS510DN	45146PHH3DGYX	3				
MS510DN	45147GHH3N4P5	3				
MS510DN	45147GHH3N4NZ	3	3%	424		424
MS510DN	45147GHH3N4N3	3				
MS510DN	45146PHH3DGYF	3				
MS510DN	45146PHH3DGYL	3				
MS510DN	45146PHH3DGY Y	3				
MS510DN	45146PHH3DGZ2	3				
MS510DN	45147GHH4HNM9	2				
MS510DN	45147GHH4H1C1	2	1%	121		121
MS510DN	45147GHH4HMZP	2				
MS621DN	460090200LVT4	1	13%	2673		2673
MS621DN	460090200LVRZ	1				
MS621DN	460090200LVTB	1	1%	235		235

<< More data continued on Next Page >>

27Q060 - Jan 2020 - Page 3

### Printer Details - Page 2

Model	Serial Number	Age in Years	Utilization	ATS Printer	Avg Mono Pages	Avg Color Pages	Avg Monthly Volume
MS621DN	460090200LVT C	1	0%		20		20
MS621DN	460090200LVTH	1	27%		5445		5445
MS621DN	460090200LVTP	1	2%		312		312
MS621DN	460090200LVTX	1	2%		373		373

MS621DN	460090200LVTY	1				
MS621DN	460090200LVTZ	1	21%		4127	4127
MS621DN	460090200LVT1	1	1%		225	225
MS621DN	460090200LVT5	1				
MS621DN	460090200LVT7	1	1%		114	114
MS621DN	460090200LVT8	1	7%		1477	1477
MS621DN	460090200LVT9	1	3%		667	667
MS621DN	460090200LVVC	1	2%		486	486
MS621DN	460090200LVV1	1	1%		296	296
MS621DN	460090200LVV2	1				
MS621DN	460090200LVV3	1				
MS621DN	460090200LVV4	1	0%		61	61
MS621DN	460090200LVV5	1				
MS621DN	460090200LVV7	1				
MS621DN	460090200LVV8	1				
MS810de	40635C66033LN	4	10%	Yes	1961	1961
MX711dhe	74635C66028X4	4	7%	Yes	1828	1828
SVCE322	990DOKM	17				
T640n	792YG0G	11				
T640n	791PPR9	12	5%		681	681
T640n	791PMF7	12				
T640n	791PPDF	12				
T640n	792TXH3	11	1%		197	197
T644n	790W898	13	4%	Yes	962	962
X646dte	792KCTK	11		Yes		
0	0	0				
0	0	0				
0	0	0				
0	0	0				
0	0	0				
0	0	0				
0	0	0				
0	0	0				
0	0	0				
0	0	0				
0	0	0				
0	0	0				
0	0	0				
0	0	0				
0	0	0				
0	0	0				
0	0	0				
0	0	0				
0	0	0				
0	0	0				

<< End of Data >>

For more information regarding this snapshot, please contact your Lexmark team

Lexmark Team			
Title	Name	E-Mail	Phone
Client Executive	Mindy Maher	<a href="mailto:mmaher@lexmark.com">mmaher@lexmark.com</a>	212-880-2837
Site Operations	Mark Ennis	<a href="mailto:mennis@lexmark.com">mennis@lexmark.com</a>	908-210-3030
Systems Engineer	TBD	TBD	TBD

CDW Team CDW Sales Department – 800-705-4239			
Title	Name	E-Mail	Phone
Sales Manager	John Skidmore	<a href="mailto:john.skidmore@cdwg.com">john.skidmore@cdwg.com</a>	(866) 687-3187
Sales Operations	Jon Gray	<a href="mailto:jongray@cdw.com">jongray@cdw.com</a>	(203) 851-7133
		<a href="mailto:NYCDOE@cdwg.com">NYCDOE@cdwg.com</a>	